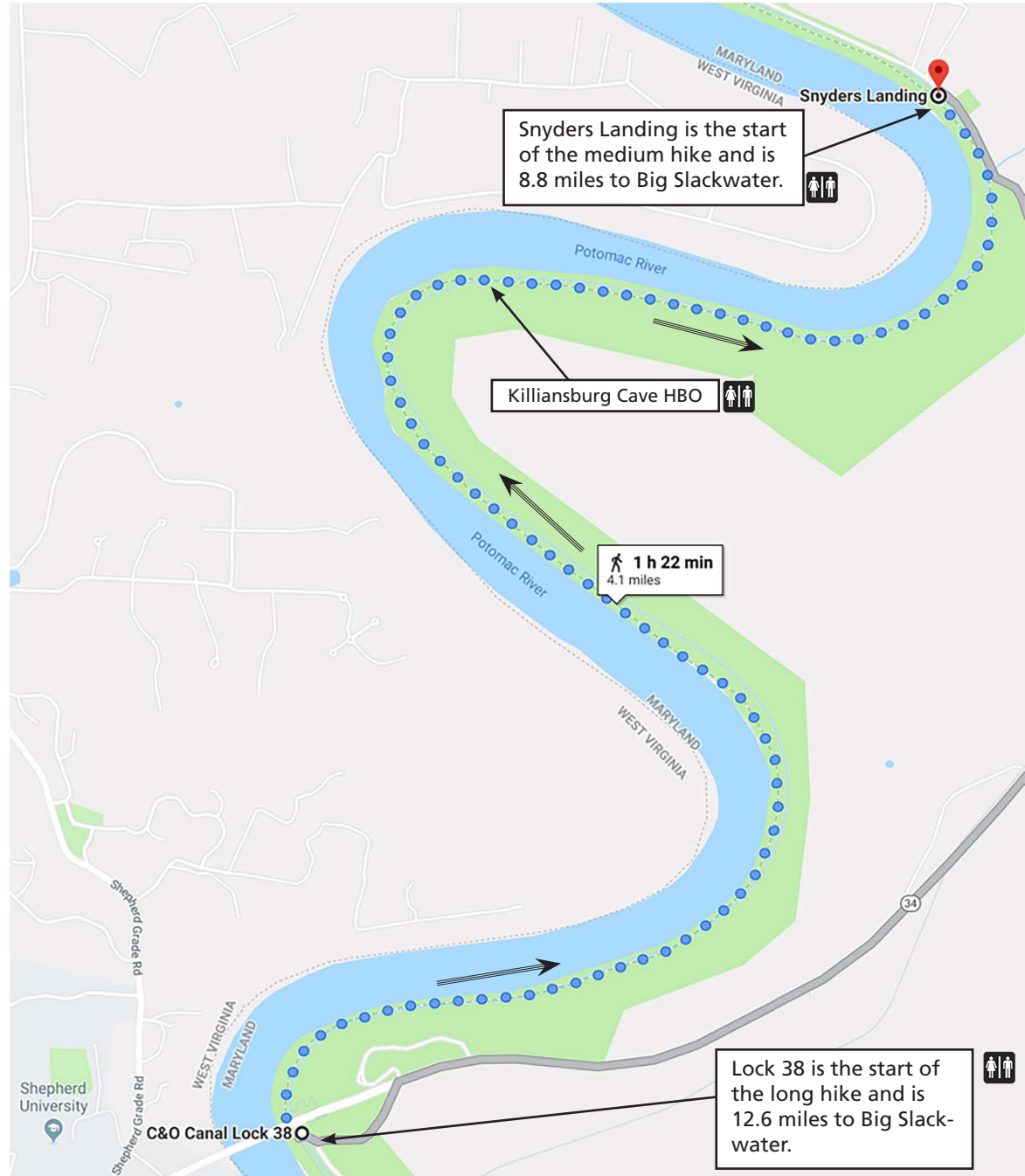


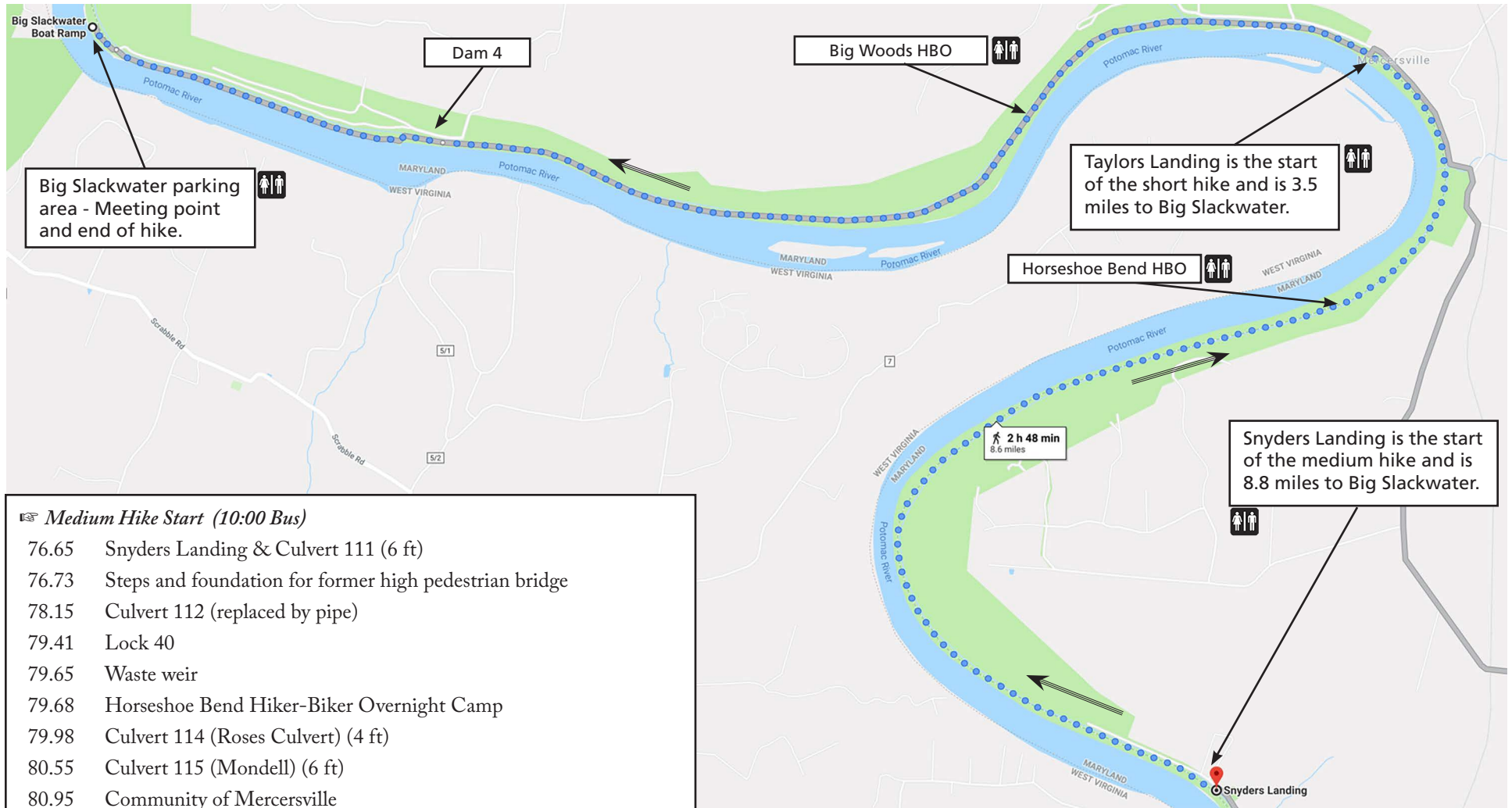
C&O Canal Association Douglas Hike – May 5, 2019 – Meeting Point Details and Lower Hike Features

☞	Long Hike Start (10:00 Bus)
72.80	Lock 38 (Shepherdstown)
73.46	Culvert 107 (4 ft)
74.00	Lock 39
74.04	Culvert 108 (6 ft)
74.07	Waste Weir
74.20	Stone wall on berm & section house ruins
74.28	Culvert 109 (5 ft)
75.29	Killiansburg Cave Hiker-Biker Overnight Camp
75.61	Caves on berm
75.73	Killiansburg Cave
76.65	Snyders Landing & Culvert 111 (6 ft)
☞	Medium Hike Start (10:00 Bus)
☞	Continue on reverse side

☞	Directions from KOA to Big Slackwater Parking Area
1.	Depart KOA and turn right on Kemps Mill Rd.
2.	Proceed 1 9/10 miles on Kemps Mill Rd.
3.	Turn left and continue on Kemps Mill Rd for 1/10 mile.
4.	Turn right onto MD Route 63 South, proceed 1.2 miles.
5.	Turn left on East Potomac St, then right after 1/10 mile to continue on MD 63 South
6.	After 1 2/10 miles turn right to continue on MD 63 South.
7.	After 2 8/10 miles turn right on Dam Number 4 Road.
8.	Continue 1 8/10 miles, then turn right then left to continue on Dam Number 4 Rd.
9.	Continue another 2 1/2 miles on Dam Number 4 Rd, then turn left (past Dam 4) and continue another 1 1/10 miles to the parking area.
	Note: Do NOT park at Dam 4.



C&O Canal Association Douglas Hike – May 5, 2019 – Upper Hike Features



- ☞ *Medium Hike Start (10:00 Bus)*
- 76.65 Snyders Landing & Culvert 111 (6 ft)
- 76.73 Steps and foundation for former high pedestrian bridge
- 78.15 Culvert 112 (replaced by pipe)
- 79.41 Lock 40
- 79.65 Waste weir
- 79.68 Horseshoe Bend Hiker-Biker Overnight Camp
- 79.98 Culvert 114 (Roses Culvert) (4 ft)
- 80.55 Culvert 115 (Mondell) (6 ft)
- 80.95 Community of Mercersville
- 81.00 Taylors Landing
- ☞ *Short Hike Start (10:00 Bus)*
- 81.62 Culvert 116 (Marsh Run) (10 ft)
- 82.46 Big Woods Hiker-Biker Overnight Camp
- 83.30 Dam 4 Cave
- 83.99 Culvert 118 (Hensons Culvert) (6 ft)
- 84.40 Dam 4
- 85.40 Big Slackwater parking area
- ☞ *End of hike*