

ALONG THE TOWPATH

VOLUME VI

May 1974

NUMBER 2

NOTE: SEE THE LAST PAGE OF THIS NEWSLETTER TO PROVIDE YOUR OPINION ON AN ASSOCIATION BADGE -- YOUR OPINION IS NEEDED!

1974 REUNION HIKE

The 1974 Justice Douglas Reunion Hike was very much a success! Several hundred people participated in various portions of it, to everyone's enjoyment. 33 hikers completed the entire distance by foot, out of 39 who began with that intention. The four banquets, which were held as the hikers arrived in the four major communities along the Canal, were fully subscribed. Approximately 75 people attended the Cumberland kick-off banquet, at which Senator J. Glenn Beall, Jr. presented a very strong speech in support of the C&O Canal and the National Park Service. The Senator pinpointed the problem of obtaining sufficient funds for operation and repair as being with the Office of Management and Budget (OMB), the Executive Branch's budget office. He strongly urged repair and reconstruction funding for the entire Canal.

The dinner in Hagerstown, held there due to a lack of motels in Williamsport, was also attended by approximately 75 people. This was a "relax and clean up" night for the hikers so no major speeches were scheduled. Mel Kaplan, President of the Williamsport C&O Canal Club, and Hooper Wolfe addressed the gathering. Ed Wesely was prevailed upon to sing the new verses to the Canal song.

The hikers were bussed to Frederick, for the dinner there, which also drew about 75 people. Tom Hahn presented a lecture he had prepared for a seminar in which he had recently participated. The topic was the history of the C&O Canal Association from 1954 to the present, with references to the history of the C&O Canal between 1924 and 1954; a most appropriate lecture in light of the twentieth anniversary nature of this year's hike.

Finally, on April 27, the hikers reached Georgetown and a banquet was held in Washington at which over 200 people were in attendance. Justice William O. Douglas was presented with a fine painting of the Pennyfield Lock area, in which he is portrayed, as a token of the Association's gratitude for his support over the years. Ten other of the major participants in the 1954 hike were also in attendance, including three other, out of nine, of the full-distance hikers. These ten were presented with Canal-oriented lithographs created by Judy DeHart, of Cumberland. Senator Charles McC. Mathias, Jr. was also present for the banquet and welcomed the group. Representative Gilbert Gude was the main speaker for the evening. He presented a fine speech about his vision of a Potomac National River and his Bill which is presently before the Congress. The Association is keenly interested in the progress of this Bill, since it will offer protection for the side of the Potomac River seen from the C&O Canal. Bruce Wood, 1974 hike coordinator, received a plaque from the hikers as appreciation for his work.

Other highlights of the hike, before we proceed with a day-by-day account, were that approximately 100 people turned out for the walk from Cohill Station to Licking Creek Aqueduct on Saturday April 20, and that 200 to 400 people, depending upon whose account you read, joined in for the last day of the hike - April 27, Great Falls to Georgetown.

DAY - BY - DAY

Approximately 25 of the hikers arrived in Cumberland by train the evening of April 16 to join the others for the kick-off dinner at the Algonquin Motor Inn, described on Page one. The hike officially began at 9:00 a.m., April 17 at the Western Maryland Railway Station, with Senator Beall wishing us good luck. The skies were blue, the temperature cool, and the spirits high. After a few "official" photographs at the Wills Creek Intake Lock, the western terminus of the C&O Canal, over 50 hikers started downstream. The first mile or so is on flood control embankment, but we were soon into shady towpath and walking along the Canal prism. Evitts Creek Aqueduct was passed on the first morning. Lunch, at North Branch, was a welcome rest. The hikers were proceeding at their own individual paces, bunching up at lunch, and spreading out again until reaching camp. This was to be the pattern for all days of the hike. Oldtown was reached at mid-afternoon by the leaders; Les Reed, the longest-serving member of the Maryland House of Delegates (who had to leave us here and rejoin at Great Falls), and Ernest Stickley, a retired B&O brakeman from Cumberland. Stick, as he prefers to be called, led the group into each day's camp at a pace rising to six miles per hour when his wife was waiting with lunch. Dinner at the Oldtown V.F.W. was a welcome chance to sit and relax. That evening was over early, as proved to be the pattern for the rest of the hike, as most of the hikers were heading for bed by nine p.m.

April 18 was greeted by the early risers with great anticipation because the fog lifting from the Canal was promising a lovely day and the day was to include the Town Creek Aqueduct and the Paw Paw Tunnel, as well as some beautiful scenery. However, some people did not sleep too well - the B&O keeps rather busy across the river in Green Spring, W.Va. (the B&O was to lull us to sleep for most of the nights of the hike) and the thermometer dipped well below freezing - the frost on the tents in the morning was, in some cases, preserved in the wrapped-up tents until evening. After breakfast at the V.F.W., we packed up and continued the hike. The Paw Paw Tunnel area was well explored, with some hikers even going over the top with Alan Franklin, the Level Walker for the section. We were met with signs for the "Stickpile Cafe" on our approach to the Stickpile Hill Hiker-Biker. Another sign asked, "Feet Tired? Wait until you get to Harpers Ferry!" Dick Stanton, who works at National Capital Parks, together with Grant Conway and Gerry Kirwin, met us with a fine dinner of spaghetti, salad (with a choice of dressings), and dessert. He even threw in breakfast for the price of dinner. That evening, while we were relaxing around the campfire listening to one of Grant's tales about the 1954 hike (that tale of his about George Kennedy, the Methodist Preacher, and the whisky has been confirmed by Mr. Kennedy), Dick decided things were too quiet and decided to throw some light and excitement onto the subject by setting a gasoline lantern afire. Ken Rollins saved the night with some quick action and everyone settled down for more campfire tales.

April 19 dawned with cloudy skies and even a light shower. The early starting hikers took rain gear, while those later ones saw clearing skies and left it behind. We had no more rain that day. The highlights of this day's hike included the Fifteen Mile Creek Aqueduct, Sideling Hill Creek Aqueduct, Dam 6, and spectacular scenery. George Kline had to sit out this day due to having stepped into a groundhog hole on the first day, becoming the first of six who had to take one or more days off. He rejoined us later for most of the remainder of the hike. About 15 people joined us this evening for the weekend, swelling our camping numbers to about 65. The evening's meal was the first prepared by the hikers and was a partial success - what food there was was excellent, but the size of the hikers' appetites was not adequately counted on and some late-comers had to eat our emergency freeze-dried rations.

April 20 began with heavy fog surrounding the campsite, but turned into a beautiful day. Over 100 people hiked all or part of the day, which took us from our campsite at Cohill Station in the remotely beautiful area below the Paw Paw Bends, into the civilization of Hancock, past the Tonoloway Creek Aqueduct, along I-70, and across the Licking Creek Aqueduct to our camp at the nearby Hiker-Biker. Hui Huang became our second casualty when bad blisters made him decide to take the weekend off. He rejoined us on Monday and was with us for the remainder of the hike. Fred Nolte

also took some time off to nurse blisters, leaving us at Hancock and rejoining at Dam 5. Most of the hikers found their blisters and aching muscles to be bothering them less by this fourth day. The Cumberland Valley Caterers came to our rescue with a four-entree meal and mountains of food at the access road to the Licking Creek Aqueduct. Dessert was topped off by a Western Maryland freight coming practically through the dining room, thrilling our youngest hiker, Christopher Parker, to say nothing of exciting some of the older hikers.

April 21 took us past Fort Frederick, through some beautiful fields of bluebells, along the Dam 5 slackwater, by Jellystone Park, and across the Conococheague Creek Aqueduct into Williamsport and a motel. We have been enjoying seeing Spring come to the Potomac Valley. When we left Cumberland the redbud was in tight buds, by the time we reached Washington it was almost gone. The May Apple was just poking its head above ground on the first day; by the tenth day flowers were full on it. Everything else has greeted us in this manner along the hike route: bluebells, dogwood, and bird migrations rose, peaked, and declined as we walked southeast and into Spring and early summer. The Hagerstown dinner, at the Venice Motel, has already been described. That evening offered a welcome chance to clean up, wash clothes, and sleep in beds away from railroads.

April 22 was a very welcome day - we passed the half-way mark, mile 92.25 during the course of the day which also took us along the Dam 4 slackwater. Many people left us here at Williamsport, due to prior arrangement, reducing the hiking and camping group to about 40 people. The Potomac Fish & Game summer community was on this day's agenda. The river was low, but by evening, at Taylor's Landing, rain clouds developed and some slight sprinkles caused a flurry of activity oriented around rain protection. However, nothing developed until after everyone had gone to bed, when some heavy rain proved the danger of not setting up one's tent with adequate consideration for water's habits. Some tents and some sleeping gear got rather moist, but no one suffered enough to quit the hike. This rain caused the river level to rise, putting the Dam 4 slackwater under water in places - our timing was almost perfect on this since the river was up when we left Cumberland, down when we passed the slackwater, and up again the next day. This evening's meal was a most successful one prepared by the hikers, and enjoyed around the campfire.

April 23 was our first complete day without trains and this caused us to lose our youngest hiker, Christopher Parker, age four years, for the day after he had hiked 105 miles without a break. Chris rejoined us the next day and finished the hike with the group. For the rest of us, this marked the first day most of us had eaten lunch together - Bill Failor's Antietam Headquarters staff provided lunch at Lock 38 so the early hikers had to wait for the food and were still eating when the late hikers came in. Normally we were arriving in camp between two p.m. (Stick) and six p.m. (Ed Wesely), and would not see each other as a group from morning until evening. The Antietam Creek Aqueduct was traversed today. We camped at the Dargan Bend Recreation area and had a fine dinner served by the ladies of the Sandy Hook Methodist Church at Camp Manidokan. Fred Nolte's Mother was among the ladies serving us.

April 24 took us past Dam 3, Harpers Ferry, and the collapsed Catoctin Creek Aqueduct. The National Park Service kindly provided a rowboat to cross the creek so that we did not have to take the detour. By now most of the hikers were in peak condition and were covering the miles very comfortably. Stick left this morning's camp at 6:30, had breakfast in Brunswick at the railroad YMCA (where many of us ate lunch), and was at the Calico Rocks Hiker-Biker in time for lunch. We all bussed to Frederick for dinner at Watson's Family Restaurant, as described on page one.

April 25 saw us cross the Monocacy Creek Aqueduct, tour the PEPCO generating plant at Dickerson, and brought us an honored guest, Merlo Pusey, whose editorial in 1954 caused Justice Douglas to challenge the editors of the Post and started the whole idea. He has recently sold a large portion of his land to the Park Service for an environmental education area, a tract known as Chilton Woods. He is pleased with the way everything has turned out. The evening was spent at the Chisel Branch Hiker-Biker, near Edwards Ferry. The group again prepared dinner on what seemed to be our last evening together. The next night brings the business meeting and many

new faces, and the whole thing would be over before Saturday night. In honor of this feeling, many songs were sung and the campfire was kept going well into the evening.

April 26 saw us lose our sixth full distance hiker, Alan Franklin, who developed a "marching fracture" and, only 30.5 miles from the end, had to stop hiking for the remainder of the hike. The one I had not mentioned, George French, started with a recently sprained ankle and was with us off and on for the entire hike. This brought us down to the final 33 hikers, 26 men and 7 women (7 women started, 7 finished). We regrouped at Seneca Creek Aqueduct and were met by representatives of two television stations and the Washington Post, the first Washington coverage we had had during the entire hike, save for one article which Barbara Yeaman got printed and some radio coverage arranged in advance. The Cumberland papers covered us all the way downstream, partially because Mayor Tom Conlon was with us and the Hagerstown and Frederick papers picked us up a day or two before we reached town and covered us for a day or two afterwards. Great Falls was the end of this day's hike, with the hikers being bussed to the Marsden Tract to camp. Dinner, and breakfast, were provided by the Friends of the Tavern in the courtyard outside the Tavern, a most lovely setting. The business meeting was held at the Tavern that evening.

April 27, Saturday, saw upwards to 400 hikers leave Great Falls Tavern and hike into Georgetown. Senator Beall and Representative Gilbert Gude led the hikers downstream at a good clip, until Mr. Gude was sidetracked by wildflowers. Cathy Douglas was among the leaders that morning, but Justice Douglas could not attend the hike. Lunch was served at Sycamore Island by La Haute Cuisine (at the Parkway) or eaten on the Island, courtesy of the Sycamore Island Club, by those who had brought their own. Several members of the group then enjoyed punch at Lock 6, courtesy of Tom and Nat Hahn and family. At Mile 2 most of the full-distance hikers assembled as a group and then continued into Georgetown and on to the Tidal Lock, the eastern terminus of the C&O Canal, as a group, joined by several other hikers. Senator Charles McC. Mathias, Jr. met us in Georgetown and continued to the Tidal Lock with us.

The banquet at Hogate's climaxed the entire hike. It was a fine evening so we enjoyed cocktails on the terrace. The distinguished guests, the 1954 hikers present, and the 1974 hikers were each introduced in turn. The speeches were short and very appropriate to the occasion. Jugs of Wills Creek water were presented by Mayor Conlon to Mr. Gude and James Gleason.

In case you had not noticed, we had rain only one night and sprinkles twice. The temperatures were perfect for walking and the skies were clear all but two days. We all find it hard to believe we could have such perfect weather for eleven days in April. A week earlier or later and we would have had at least two rainy days and not so pleasant temperatures. The Spring flowers would not have been quite so spectacular a week earlier or later.

You may have wondered at our camping at some of the places we did. This was by special permission of the National Park Service, who co-sponsored the hike. They allowed us to select those sites based on road access and day hiking lengths. They also supported us by providing water and toilet facilities where there were none, by providing telephone communications when needed, and by walking with and patrolling behind the hiking group. The U.S. Army provided large tents, set up by NPS, in case of rain. The NPS personnel were always ready and willing to help in any way they could. They are an extremely cooperative and capable group.

Are you interested in facts? The oldest full-distance hiker was Gayle Waldrop, 74 years old, from Boulder, Colorado, also the most distant hiker. The youngest hiker to complete the trek was Mary Heimer, 15 years old. Christopher Parker, age 4 years, was the youngest person along and he hiked nearly 170 miles, missing only one day. We had three generations of one family along: Alan Franklin, grandfather; Jeremy Parker, father; and Christopher Parker, son. Only one couple hiked the entire distance, Bruce & Sherry Wood. The list of hikers follows. Geographically, 20 hikers came from the Montgomery/Prince George's County area, 4 from other parts of Maryland (2 Cumberland, 1 Hagerstown, 1 Columbia), 7 from Virginia, 1 from Washington, D.C. and 1 from Colorado, among the 33 complete distance hikers. Carl Linden, Nancy Long, and Bruce Wood finished, Alan Franklin almost made it; they being 4 of the officers of the Association.

1 9 7 4 H I K E R S

Listed below are the 33 people, in order of age, who hiked the entire C&O Canal with the C&O Canal Association 1974 Annual Justice Douglas Reunion Hike: (read down)

Gayle Waldrop	Edgar Smith	Wes Boer
L. B. Lovell	Bruce Burnside	Jerry Gaskill
Victor Conrad	Tom Conlon	Jeremy Parker
Ernest P. Stickley, Sr.	Jean Harvey	Bruce Wood
Ralph French	Emmie Johns	Sherry Wood
Earl Smith	John Howard	Judy Kuhn
Robert Greenberg	Carl Linden	Robert Greenspun
Harold Cumbee	Nancy Long	Robert Leyshon
Dorothy Geary	Edwin Wesely	Marty Mintzell
Mary Christensen	Jack Colwell	Craig Grabowsky
Kenneth Rollins	Merle Van Horne	Mary Heimer

Listed below are the 6 people, in order of age, who intended to hike the entire C&O Canal but were forced to drop out: (read down)

Hui Huang	Alan Franklin	Fred Nolte
George Kline	George French	Christopher Parker

Many others, too many to name, joined the hike for one or more days. The three people listed below provided logistics support, in addition to the NPS:

Maurice Crews	Kit Franklin	Marta Kelsey
---------------	--------------	--------------

F O R S A L E

The C&O Canal Association has located a collection of newspaper clippings of the 1954 hike and has had them reproduced. We are selling them for \$5.00 each to anyone who is interested. They make an excellent souvenir of that hike and, in addition, are very interesting reading. The editorials before and after, Justice Douglas' letter, the articles about the hike during its progress, a list of the hikers, and other items of interest are included.

Also, we have collected and reproduced a collection of newspaper clippings of the 1974 hike. These are being sold for \$3.00, they being a somewhat smaller volume. Included are newspaper articles, a list of hikers, the new verses to the Canal song, various special salutes from 1954 participants to 1974 participants, and other items of interest.

To obtain either volume, send \$5.00 for the 1954 volume, and/or \$3.00 for the 1974 volume, in the form of a check made out to "C&O Canal Association" and write to:

Mr. Carl Linden
6404 Ridge Drive Brookmont
Washington, D. C. 20016

B U S I N E S S M E E T I N G

An Historical Committee was established, with Marty Mintzell as its chairman. The object of the Committee is to establish a listing of people in and out of the region who have first-hand knowledge about the operations of the C&O Canal. If you know of anyone who might qualify for this list, please send their name and address to: Mayor Tom Condon, City Hall, Cumberland, Maryland 21502. Tom is serving as the collection point. This list will be turned over to the Park Service or will be used by the Association to obtain much-needed information about the operational aspects of the C&O Canal.

Also established was an Advisory Board to the Association's Board of Directors, which will consist of persons with information valuable to the Association but who are not otherwise directly involved in the operations of the Association. Those suggested for this Advisory Board include: Justice Douglas, Jack Durham, Robert Estabrook, Merlo Pusey, Sig Olsen, Roger Foster, and Ernest Stickley.

C A N A L C A L E N D A R

MAY 25 - C&O Canal National Historical Park Advisory Commission - Nancy Long, Chairman. 9:00 a.m., Mather Center, Harpers Ferry. You are invited.

July 27
JUNE 8 - Historical Study Hike - This a new style hike sponsored by the C&O Canal Association intended to enable its members and interested friends to learn more about the Canal. The emphasis of this first hike will be the history of the section covered, about eight miles. Other hikes will emphasize Natural History, Geology, History, and any other topics anyone wishes to learn about and/or could lead. Anyone is welcome to lead one of these hikes, just let the Level Walker Chairman know. The tentative plan is to have one hike each month, September through December and March through June, and to cover the entire Canal within a three year period.

This month's hike will be led by Tom Hahn; hikers are to meet at Lock 38 (near Shepherdstown, W.Va.), at 9:00 a.m. June 8, Saturday. An optional camp-out will be available for those interested - bring your own lunch, dinner, camping and cooking equipment, and breakfast. No reservations required - just show up at Lock 38 with your equipment and your interest.

JUNE 23 - Canoe Trip - the Citizens for the Potomac National River are sponsoring a canoe trip from Harpers Ferry to Brunswick. Meet at the parking lot in Harpers Ferry at 10:00, June 23, Sunday. Anyone with a canoe who can take a dignitary down the river should contact Robert Harrigan, 229-1165, for details. While we cannot guarantee you a seat, everyone who wanted to got to ride last year. Please show to demonstrate our support for the Potomac National River Bill - there will be a party afterwards at a location to be announced that morning. Y'all come!

M I S C E L L A N E O U S

Mrs. Dorothy Grotos, 207 North Irving Street, Arlington, Virginia 22201, is the new Advisory Commission member for Virginia, joining John Lewis, Welcome!

A group called Antietam Battlefield Protectors, Inc., Box 444, Sharpsburg, Maryland 21782, has been organized to raise funds for the purchase of land surrounding the Antietam Battlefield. They want to save this land from real estate speculators, builders, and tourist attractions and to turn it over to the National Park Service. Every \$2.00 contributed buys one square foot of land; they need millions. It is a non-profit, tax-free organization attempting to buy the land outright or to obtain scenic easements. If you wish to contribute to this worthwhile organization, send a check for any amount made out to "Antietam" to the above address.

Doug Greene has compiled an interesting geographic break-out of Association memberships as of May 1, 1974. 35 come from Washington, D.C.; 44 from the nearby Maryland suburbs; 21 from the Virginia suburbs; 8 from Frederick; 3 from Williamsport; 3 from Hagerstown; 10 from Cumberland; 16 from other parts of Maryland; 5 from Pennsylvania; 3 from West Virginia; and others from Colorado, Connecticut, Massachusetts, New Jersey, and Ohio. These numbers reflect only one membership per family, since the Association does not differentiate between individuals and families, so that the total number of Association members actually numbers several times higher than the total above. You can see that we need more up-river members if we are to effectively reflect the wishes of that area - what can you do to help alleviate this need???

LEVEL WALKER REPORTS

Only three reports have been submitted since the last newsletter, although 11 Level Walkers, representing 9 sections, covered their sections during the Annual Hike - perhaps the next newsletter can include their reports. A number of sections are again unassigned, due to Level Walkers not continuing their membership in the Association. If anyone is interested in any of these sections, please contact me; Bruce W. Wood, Level Walker Chairman, 6200 Winnebago Rd., Bethesda, Md. 20016; (301) 229-5182.

2.3 Old Boat Incline to Lock 5, Marilyn DeLoach notes the coming of Spring to the Canal and the flurry of activity related to it, both by people and plants and animals. She notes that the towpath looks very good again, thanks to the construction contract, but that this may suffer if vegetation is not put in on the bare earth banks of the towpath to prevent erosion. She reports a beaver dam below Lock 5, a beaver seen in the first two miles of the Canal, and muskrats near Key Bridge. Some day I'll list her excellent Natural History observations - they are interesting.

14.3 Great Falls to Swains Lock is unassigned.

22.8 Seneca Aqueduct to Tenfoot Island is unassigned.

33.2 Fort Harrison Island to Whites Ferry, Morris Green reports heavy use on a fine Spring Saturday. He notes little change from prior reports, including a defective latch on the outhouse door - this seems to be a common defect along the canal - some of the doors can't be closed from inside or can't be opened once closed.

35.5 Whites Ferry to Woods Lock (Lock 26) is unassigned.

39.4 Woods Lock to Monocacy Aqueduct, Anson Courter was out covering his section when we hiked by. He reports the beginnings of the fly ash removal from the Canal prism. For the first time in nearly ten years he has found a nesting Prothonotary Warbler in his section, the pollution apparently having discouraged it before. A number of these warblers were seen in the upper reaches of the Canal.

62.3 Dam No. 3 to Dargan Quarry is unassigned.

65.1 Dargan Quarry to Mountain Lock is unassigned.

81.6 Marsh Run Culvert to Dam No. 4 is unassigned.

108.6 Lock 47 to McCoys Ferry is unassigned.

110.4 McCoys Ferry to Fort Frederick is unassigned.

112.4 Fort Frederick to Ernestville is unassigned.

124.1 Hancock to Roundtop Hill is unassigned.

127.3 Roundtop Hill to Lock 53 is unassigned.

130.0 Lock 53 to Dam No. 6 is unassigned.

134.1 Dam No. 6 to Sideling Hill Creek Aqueduct is unassigned.

159.7 Culvert Opposite Little Cacapon Creek to Town Creek Aqueduct is unassigned.

170.8 Kellys Road Culvert to Spring Gap is unassigned.

173.4 Spring Gap to North Branch (Lock 74) is unassigned.

182.6 Wiley Ford to Intake Lock (Cumberland) is unassigned.

Many of the above unassigned sections are very pretty and very interesting. All that is expected of you is that you remain an Association member, go out and enjoy your section at least four times a year, and submit a report on it twice a year - the first report should be quite complete and then the others can simply say "All's Well" so we know you've been out having fun and that all is well. There are several Advisory Level Walkers to help you with History, Natural History, Engineering, Geology, etc.

The next page includes some of the verses which have been added to the "C&O Canal Song" as a result of the 1974 hike.

THE C & O CANAL SONG
(MORE VERSES)

Commemorating Events, People, and Circumstances on the 1974 Reunion Hike -the 20th Anniversary of the William O. Douglas - Washington Post Hike.
(Tune of "Erie Canal")

1. Now Cumberland had a mayor,
Tom Conlon ~~was~~ his name.
One day he took to the towpath,
and he walked his way to fame.
2. With thirty-nine companions,
Whose object was the same -
To end up at the Watergate,
Unless we first went lame.

Ch. Oh, The C&O was a 'rizin'
And the gin was a'getting low;
And I scarcely think we'll get a drink,
'Till we get to Glen Echo!
3. Bruce always plans with precision,
To the tenth of a mile or so,
But the quarter-mile hike on Oldtown night,
Was a mighty long way to go!
4. Our camp was a happy enclave,
With voices loud and low;
But there's no joy at ten to four,
In the roar of the B&O.

Ch.
5. Dick Stanton made spaghetti,
At the foot of Stickpile Hill.
He cooked full well and hearty,
And all of us got our fill.
6. He put on a grand performance,
In his old red flannel shirt.
On top of a glorious dinner -
He gave us a flaming dessert!

Ch.
7. Now Tom Hahn was a climber -
He climbed up Roundtop Hill.
If it hadn't been for Carl and Ken,
He'd be up the hillside still.
8. We had our meal at Licking Creek,
Beside the B&O.
The engineer, he waved at Chris,
And his whistle he did blow.

Ch.
9. Well Yogi Bear is a famous park,
On the West Virginia line.
If you want to see their plastic bear,
Just write to Andy Devine.
10. Now Jack Rottier got curious -
About that Jellystone Park
He went across the river,
And it really was a lark.
11. Hell's Angels tried to run them down;
The guide was awful fussed,
He called the County Sherriff,
And how those Angels cussed.
12. The guide sent Jack to Dam #5,
To keep him in the dark;
But his camera somehow sung around,
And photographed the park.

Ch.
13. By the time we got to Williamsport,
We were used to being sore;
But it didn't cheer us very much,
With ninety-nine miles more.
14. We all took off to Hagerstown,
To have a little fun.
With all that hospitality,
Our pains went down to none!
15. Now Grant Conway was a hiker,
With the Justice Douglas Band;
But now he's on the banquet circuit,
And his feet are feeling grand.
16. And Hooper Wolfe was a driver,
In the days of the old canals;
He drove the mules to distraction,
With all his lady pals!

Ch.
17. We'd been seven days away from home,
But our hearts were light and merry.
The cause of all our sudden joy -
Was passing Harpers Ferry.

18. Now Stickley always left the camp,
Away ahead of the bunch,
One day he had his breakfast,
Where the rest of us stopped for lunch!

Ch.

19. When we got down to PEPCO's plant,
We found refreshments spread.
We didn't get more fly ash -
But we got snow instead!

20. The night was cold at Chisel Branch;
Twas good there was no breeze --
As we sat around the campfire,
Someone streaked 'round through the trees.

Ch.

21. When Mary got to Georgetown,
Her reception there was grand.
They pinned a medal on her,
And we autographed her van.

22. With Bruce Wood for our Captain,
And Sherry for our Guide;
They even got the weather
And the Good Lord on our side!

Final Chorus:

Oh, the C&O kept 'rizin',
And the gin kept a-gettin' low;
And some of us never got that drink -
'Til we got to Glen Echo.

A N A S S O C I A T I O N B A D G E ?

Several Association members have expressed interest in having a durable, permanent C&O Canal Association membership badge to wear when hiking the Canal so they can identify other members and so they may be identified as Association members. To date, the only such badge the Association has had has been a cloth badge which has to be sewn onto one's garment. This depicts a canal boat being pulled by mules and bears the legend "C&O Canal Association." The drawback to this cloth badge is mainly that it cannot readily be transferred from one piece of clothing to another to reflect the weather.

Therefore, suggestions for a solid metal badge, with a pin to attach it to whatever one chooses to wear, have been made. The design for a metal badge would include "Chesapeake & Ohio Canal Association" and the seal of the Canal Company. It would be rectangular in shape, approximately 2x3 inches, and the color would be brass. If the die-struck option is taken, a name can be engraved on the badge; if the cast option is taken, no name can be put on the badge. Level Walkers have the choice of a separate piece stating "Level Walker" below either the die-struck or cast options. It is not practical to have some made up with Level Walker in the badge and some not.

Every member is urged to indicate his or her preference for which type of badge or no badge is desired. REMEMBER - A BADGE IS A ONE-TIME PURCHASE, not an annual one.

-
1. _____ I prefer a DIE-STRUCK badge with my name engraved upon it. (+\$8.00)
 2. _____ I prefer a CAST badge without an engraved name. (+\$5.00)
 3. _____ I prefer a CLOTH badge to be sewn onto one's garment. (+\$2.00 maximum)
 4. _____ I DO NOT WISH to have any Association badge.

LEVEL WALKERS: _____ YES, I would; (or) _____ NO, I would not; like to be able to purchase a separate piece that says "Level Walker." (+\$1.00)

Please return this portion of the page to: Bruce W. Wood
6200 Winnebago Road
Bethesda, Maryland 20016

LEVEL WALKERS DIRECTORY - MAY 1974

Miles from Tidal Lock (Georgetown)

- 0 TIDAL LOCK to OLD BOAT INCLINE
Section 1
Miss Rae T. Lewis
Box 5532 Friendship Station
Washington, D.C. 20016
(202) 966-3310
- 2.3 OLD BOAT INCLINE to LOCK 5
Section 2
Mrs. Marilyn C. DeLoach
3206 Wisconsin Avenue, N.W.
Washington, D.C. 20016
(202) 363-0650
- Mr. Carl Linden
6406 Ridge Drive Brookmont
Washington, D.C. 20016
(301) 229-2398
- 5.0 LOCK 5 to CABIN JOHN CREEK
Section 3
Mr. Philip J. Stone
3023 Macomb Street, N.W.
Washington, D.C. 20008
(202) 966-0220
- 7.5 CABIN JOHN CREEK to LOCK 14
Section 4
Mr. H. Dulany Davidson, Jr.
7809 Sycamore Drive
Falls Church, Virginia 22042
(703) 573-3453
- Miss Nancy C. Long
6001 Bryn Mawr Avenue
Glen Echo, Maryland 20768
(301) 229-0196
- 9.4 LOCK 14 to CROPLEY
Section 5
Mr. Robert N. Greenberg
7012 Braeburn Place
Bethesda, Maryland 20034
(301) 229-5644
- 12.3 CROPLEY to GREAT FALLS (lock 20)
Section 6
Ms. Helen L. Johnston
4909 Bayard Boulevard
Washington, D.C. 20016
- 4.3 GREAT FALLS to SWAINS LOCK
Section 7
Unassigned
- 16.6 SWAINS LOCK to PENNYFIELD
Section 8
Mr. O. Jerome Glass
2022 Columbia Road, Apt. 706
Washington, D. C. 20009
(202) 265-0697
- Rep. Gilbert Gude
332 Cannon House Office Building
U. S. House of Representatives
Washington, D. C. 20515
(202) 225-5341
- 19.6 PENNYFIELD to SENECA AQUEDUCT
Section 9
Justice William O. Douglas
Supreme Court of the United States
Washington, D. C. 20543
- Mr. William C. Clague
6015 Walhonding Road
Washington, D. C. 20016
(301) 229-5633
- 22.8 SENECA AQUEDUCT to TENFOOT ISLAND
Section 10
Unassigned
- 25.0 TENFOOT ISLAND to SYCAMORE LANDING
Section 11
Alan & Becky Hedin
47 Shaw Avenue
Silver Spring, Maryland 20904
(301) 622-3985
- 27.2 SYCAMORE LANDING to EDWARDS FERRY
Section 12
Mr. Virgil Smirnow
Mulberry Hill
Burdette Road
Bethesda, Maryland 20034
(301) 365-4668
- 30.8 EDWARDS FERRY to FT. HARRISON ISLAND
Section 13
Mr. Napier Shelton
1563 44th Street, N.W.
Washington, D. C. 20007
(202) 965-5249
- Mr. Constant Southworth
4000 Cathedral Ave., N.W. Apt. 733B
Washington, D.C. 20016
(202) 338-8012

- 33.2 FT. HARRISON IS. to WHITES FERRY
Section 14
Mr. Morris M. Green, Jr.
4209 East-West Highway
Chevy Chase, Maryland 20015
(301) 652-8180
- 35.5 WHITES FERRY to WOODS LOCK (lock 26)
Section 15
Unassigned
- 39.4 WOODS LOCK to MONOCACY AQUEDUCT
Section 16
Mr. Anson C. Courter
2603 Naylor Road, S.E., Apt 301
Washington, D.C. 20020
(202) 581-0553
- 42.2 MONOCACY AQUEDUCT to NOLANDS FERRY
Section 17
Senator Charles McC. Mathias, Jr.
460 Russell Senate Office Building
U. S. Senate
Washington, D. C. 20510
(202) 225-4654
- Mr. Ray P. Teele
3713 Jenifer Street, N.W.
Washington, D.C. 20015
(202) 966-1990
- 44.6 NOLANDS FERRY to POINT OF ROCKS
Section 18
Mr. John Lyons, Jr.
5520 Glenwood Road
Bethesda, Maryland 20034
- 48.2 POINT OF ROCKS to CATOCTIN AQUEDUCT
Section 19
Miss Marie M. Grenan
780 Fairview Avenue
Takoma Park, Maryland 20012
- Mr. Lyman Stucker
2811 Farm Road
Alexandria, Virginia 22302
(703) 549-3527
- 51.5 CATOCTIN AQUEDUCT to BRUNSWICK (lock 30)
Section 20
Mr. Ray Martin
2203 42nd Street, N.W., Apt. 3
Washington, D.C. 20007
(202) 338-1909
- 55.0 BRUNSWICK to WEVERTON (lock 31)
Section 21
Maryland Historic Trails
(Mr. Albert Swann)
P. O. Box 419
Glen Burnie, Maryland 21061
- The Herbert Winston Family
10 Park Overlook Court
Bethesda, Maryland 20034
(301) 469-7113
- 58.0 WEVERTON to HARPERS FERRY (lock 33)
Section 22
Mr. Grant Conway
6032 Broad Street Brookmont
Washington, D.C. 20016
(301) 229-2465
- Mr. Thomas J. McDonald
Box 484 RFD 3
Mount Airy, Maryland 21771
- 60.7 HARPERS FERRY to DAM NO. 3
Section 23
Mr. Orville Crowder
Crowder Nature Tours
Harpers Ferry, West Virginia 25425
(304) 535-6979
- Rev. Larry Harris
5910 37th Avenue
Hyattsville, Maryland 20782
(301) 559-8443
- 62.3 DAM NO. 3 to DARGAN QUARRY
Section 24
Unassigned
- 65.1 DARGAN QUARRY to MT. LOCK (lock 37)
Section 25
Unassigned
- 67.0 MT. LOCK to ANTIETAM AQUEDUCT
Section 26
MGEN A. F. Binney, USMG Ret.
2815 Cathedral Avenue, N.W.
Washington, D.C. 20008
(202) 265-1174
- 69.4 ANTIETAM AQUE. to SHEPHERDSTOWN (lock 38)
Section 27
Mr. Kenneth S. Rollins
113 Valley Road Brookmont
Washington, D.C. 20016
(301) 229-1513

72.8 SHEPHERDSTOWN to LOCK 39

Section 28

Mr. John C. Frye
Gapland, Maryland 21736

74.0 LOCK 39 to SNYDERS LANDING

Section 29

Mr. Eugene Maddex
64 Lebanon Hills Drive
Pittsburgh, Pennsylvania 15228
(412) 343-2626

76.7 SNYDERS LANDING to LOCK 40

Section 30

Mr. Harold Art Cramer, Sr.
718 Pamela Road
Glen Burnie, Maryland 21061
(301) 761-2768

79.4 LOCK 40 to MARSH RUN CULVERT

Section 31

Mr. Harold Art Cramer, Jr.
718 Pamela Road
Glen Burnie, Maryland 21061
(301) 761-2768

Mr. William Cramer
1301 S. Scott Street, Apt 231
Arlington, Virginia 22204
(703) 920-1013

81.6 MARSH RUN CULVERT to DAM NO. 4

Section 32

Unassigned

84.4 Dam No. 4 to CHARLES MILL

Section 33

Mr. Robert M. Dodds
6101 28th Ave., Room 610
Washington, D.C. 20031
(301) 423-7022

88.1 CHARLES MILL to FORMANS FERRY

Section 34

Mr. Victor P. Conrad
Route 8, Box 236
Hagerstown, Maryland 21740

Mr. Charles Otstot
5124 33rd St., North
Arlington, Virginia 22207
(703) 538-5446
(also Section 35)

91.0 FORMANS FERRY to LOCK 43

Section 35

Mr. Charles Otstot
(See Section 34)

93.0 LOCK 43 to FALLING WATERS

Section 36

Miss Sylvia M. Geller
419 Florida Avenue, #108
Herndon, Virginia 22070
(703) 471-1083
(also Section 37)

Miss Ellen Holway
6214 Wagner Lane
Washington, D.C. 20016
(also Section 37)

94.4 FALLING WATERS to WILLIAMSPORT

Section 37

Mr. Walter W. Teach
234 E. Potomac Street
Williamsport, Maryland 21795
(301) 223-7495

Miss Sylvia M. Geller
Miss Ellen Holway
(See Section 36)

99.3 WILLIAMSPORT to PINESBURG STATION

Section 38

Mr. Melvin I. Kaplan
1 Fenton Avenue
Williamsport, Maryland 21795
(301) 582-2165

102.0 PINESBURG STATION to OLD RR. STATION

Section 39

Mr Paul Hauck
12412 Village Square Terrace, #202
Rockville, Maryland 20852

105.0 OLD RR. STATION to DAM NO. 5

Section 40

Mr. George W. "Hooper" Wolfe
P. O. Box 108
Williamsport, Maryland 21795
(301) 223-7941

106.8 DAM NO. 5 to LOCK 47

Section 41

Mr. Charles Morrison
1117 Moler Avenue
Hagerstown, Maryland 21740
(301) 739-5370

108.6 LOCK 47 to McCOYS FERRY

Section 42

Unassigned

110.4 McCOYS FERRY to FT. FREDERICK

Section 43

Unassigned

- 112.4 FT. FREDERICK to ERNESTVILLE
Section 44
Unassigned
- 114.5 ERNESTVILLE to LICKING CREEK AQUE.
Section 45
Mr. John Beck
7603 Fountaine Bleau Drive, Apt 2328
New Carrollton, Maryland 20784
(301) 459-6686
- 116.0 LICKING CREEK AQUE. to MILE 120
Section 46
Mr. William E. Davies
125 W. Greenway Boulevard
Falls Church, Virginia 22046
(703) 532-7588
- 120.0 Mile 120 to HANCOCK
Section 47
Mr. Walter L. Keefer
Route 1
Clear Spring, Maryland 21722
(301) 739-3802
- 124.1 HANCOCK to ROUNDTOP HILL
Section 48
Unassigned
- 127.3 ROUNDTOP HILL to LOCK 53
Section 49
Unassigned
- 130.0 LOCK 53 to DAM NO. 6
Section 50
Unassigned
- 134.1 DAM NO. 6 to SIDELING HILL AQUE.
Section 51
Unassigned
- 136.6 SIDELING HILL AQUE. to LITTLE ORLEANS
Section 52
Mr. Donald D. Ramsey
8300 Flower Avenue
Takoma Park, Maryland 20012
(301) 589-9208
- 140.9 LITTLE ORLEANS to LOCK 59
Section 53
CDR John G. Urquhart, USN Ret.
117 Hesketh Street
Chevy Chase, Maryland 20015
(301) 656-0474
- 146.6 LOCK 59 to LOCK 60
Section 54
Miss Doris M. Bailey
1110 Fairview Avenue
Frederick, Maryland 21701
- Miss Dorothy Ann Johnson
1110 Fairview Avenue
Frederick, Maryland 21701
- 149.7 LOCK 60 to GREEN RIDGE STATION
Section 55
Jack & Ricki Colwell
6313 Walhonding Road
Bethesda, Maryland 20016
(301) 229-5129
- 151.2 GREEN RIDGE STATION to LOCK 61
Section 56
Mr. Jeremy F. Parker
6222 Broad Street Brookmont
Washington, DC 20016
(301) 229-2578
- 153.1 LOCK 61 to LOCK 63 1/3
Section 57
The Joseph Flynn Family
5309 Iroquois Road
Bethesda, Maryland 20016
(301) 229-0282
- 154.5 LOCK 63 1/3 to PAW PAW (Md. 51)
Section 58
Alan & Kit Franklin
6510 Ridge Drive Brookmont
Washington, D.C. 20016
(301) 229-2263
- Mr. Isaac Long
Paw Paw, West Virginia 25434
- 156.3 PAW PAW to CULV. OPP. LITTLE CACAPON
Section 59
Mr. John H. Chandler
6718 Persimmon Tree Road
Bethesda, Maryland 20034
- 159.7 CULV. OPP. LITTLE CACAPON to TOWN CREEK AQUE.
Section 60
Unassigned
- 162.3 TOWN CREEK AQUE. to LOCK 68
Section 61
Lynn & Judy DeHart
1900 Bedford Street
Cumberland, Maryland 21502
(301) 722-6397

164.8 LOCK 68 to OLDTOWN (Lock 71)
Section 62
Bruce & Sherry Wood
6200 Winnebago Road
Bethesda, Maryland 20016
(301) 229-5182

167.0 OLDTOWN to KELLYS ROAD CULVERT
Section 63
Ted & Bonnie Troxell
612 Montgomery Avenue
Cumberland, Maryland 21502
(301) 724-7725
(also Sections 67 & 68)

170.8 KELLYS ROAD CULVERT to SPRING GAP
Section 64
Unassigned

173.4 SPRING GAP to NORTH BRANCH (lock 74)
Section 65
Unassigned

175.5 NORTH BRANCH to MEXICO FARMS
Section 66 (pipeline)
Senator J. Glenn Beall, Jr.
404 Russell Senate Office Building
U. S. Senate
Washington, D.C. 20510
(202) 225-4524

177.7 MEXICO FARMS TO EVITTS CREEK AQUE.
Section 67
Mr. Ted Troxell
(See Section 63)

180.7 EVITTS CREEK AQUE. to WILEY FORD
Section 68
Ms. Bonnie Troxell
(See Section 63)

182.6 WILEY FORD to INTAKE LOCK
Section 69 (Cumberland)
Unassigned

ADVISORY LEVEL WALKERS:

General: Capt. Thomas F. Hahn, USN Ret.
P. O. Box 638
Glen Echo, Maryland 20768
(301) 229-7838

History: Mr. Grant Conway
6032 Broad Street Brookmont
Washington, D.C. 20016
(301) 229-2465

Geology: Mr. William E. Davies
125 W. Greenway Boulevard
Falls Church, Virginia 22046
(703) 532-7588

Engineering: Mr. Robert Dodds
6101 28th Ave., Rm. 610
Washington, D.C. 20031
(301) 423-7022

Ornithology: Mr. Napier Shelton
1563 44th Street, N.W.
Washington, D.C. 20007
(202) 965-5249

Mr. Charles Morrison
1117 Moler Avenue
Hagerstown, Maryland 21740
(301) 739-5370

Other Fauna: Unassigned

Flora: Unassigned

LEVEL WALKER REPORTS ARE DUE ON MAY 15 and NOVEMBER 15. PLEASE SEND THEM TO THE LEVEL WALKER CHAERMAN:

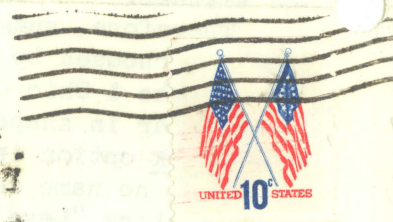
Bruce W. Wood
6200 Winnebago Road
Bethesda, Maryland 20016
Home (301) 229-5182
Work (202) 632-8516

Anyone interested in becoming a Level Walker should contact the Level Walker Chairman. If y Level Walker wishes to change levels or is no longer interested in being a Level Walker, please contact the Level Walker Chairman. Co-Level Walkers are considered to be equals and are encouraged to communicate with each other. Level Walker reports are essential - they are used by the National Park Service and the C&O Canal Advisory Commission - reports are due twice a year. If anyone does not submit at least one report - even "All's Well" - within eighteen consecutive months, that person will be assumed to be no longer interested and the section will be reassigned. All Level Walkers must be current dues-paying members of the

ALONG THE TOWPATH

1900 Bedford Street

Cumberland, Maryland 21502



Mr. John C. Frye
Gapland, Maryland 21736