

C&O Canal Association

along the towpath

concerned with the conservation of the natural and historical environment of the C&O Canal and the Potomac River Basin

VOLUME XIV

APRIL 1982

NUMBER 2

A major event

THE 1982 JUSTICE DOUGLAS HIKE DETAILS

The Association's 28th annual reunion (Justice Douglas) hike will take place on April 24, 1982, beginning at 10:00 AM at Spring Gap (mile 173.5) and ending at the canal terminus in Cumberland (mile 184.5). This section of canal and towpath passes lock 72, the canal structure most affected by Maryland's proposed route 51 realignment, locks 73-75 and a full-scale canal boat replica across from lock 75 at North Branch, and Evitts Creek aqueduct. Following the hike will be a social hour and a buffet dinner at the Elks building in Cumberland with a speaker from the National Park Service. All members, prospective members and friends are invited to enjoy a brief glimpse of spring advancing along the upper Potomac valley. Reservation form for lunch and dinner is included in this issue of Along the Towpath.

Participants wishing to camp the night of April 23 may do so at Spring Gap; Rocky Gap state park does not open until April 30, and camping there on April 23 will not be permitted. For those seeking motel rooms, there are no motels on route 51 (the road from Spring Gap to Cumberland), but there are a number of motels in the Cumberland area.

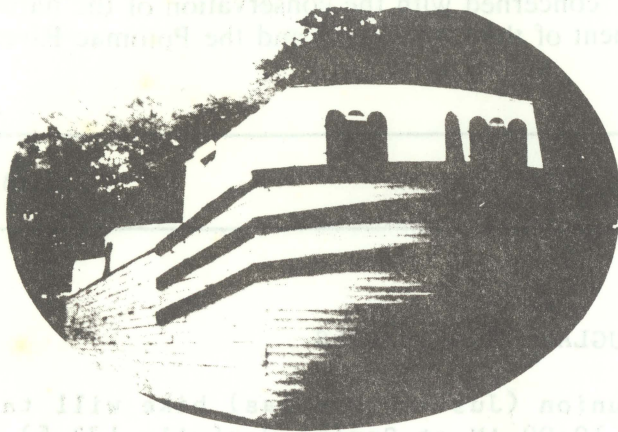
Parking for hikers on April 24 will be available at the endpoint of the hike in the lot behind the Western Maryland railroad station. From this point, between 8:30 AM and 9:30 AM, buses will be available (reservations not required) to transport hikers to the starting point at Spring Gap. The last bus will not leave Cumberland before 9:30 AM. There is a \$1 per person fee for transportation, payable before boarding the buses. Campers at Spring Gap should send drivers with their vehicles to Cumberland before 9:30 AM, where they can park their vehicles and board the buses.

At North Branch (mile 175.5), about two miles into the hike, there is a full-scale canal boat replica. Tours of the boat will be offered from 10:30 AM (donations accepted). Also at North Branch previously reserved bag lunches will be distributed, and coffee and soft drinks will be sold. The lunches will consist of "a quarter pound" ham sandwich, potato salad, fresh fruit and a can of soda. The price for this gastronomic adventure is \$4.25.

From 4:30 PM until 6:30 PM there will be a social hour with cash bar on the second floor of the Elks (BPOE) building on S. Centre street in Cumberland, a few blocks from the canal terminus. At 6:00 PM, in an adjoining room, there will be a buffet dinner (reservations required). The cost for the dinner is \$9 per person and the following foods will be offered: fried chicken, baked steak, mashed potatoes, green beans, cole slaw, cake, coffee and tea. After dinner Allegany district ranger Dave Forney will speak on the canal in the Cumberland area.

A map included in this newsletter shows the locations of the canal terminus, parking area, Elks building (on S. Centre st. with the awning) and parking

garage. The map also shows recommended routes to the parking area from route 48. Note that traffic westbound on route 48 (route 51 traffic should turn onto westbound route 48) should exit at Beall street, and traffic eastbound on route 48 at Johnson street. The arrows on these and connecting streets show the route to the parking area.



Canal Boat Replica - North Branch

GREAT FALLS PLAN IS ATTRACTIVELY PRINTED

The National Park Service has printed the Great Falls development concept plan on both sides of a single 17" x 22" sheet folded into quarters. This publication includes drawings, photographs, maps printed in four pastel colors, background information, the purpose of the plan, and the text of the plan. For a copy, send your request to the C&O Canal National Historical Park, PO Box 4, Sharpsburg, MD 21782.

OFFICERS AND BOARD MEMBERS ELECTED

At the general membership meeting of February 27, 1982, the membership elected officers for the 1982-83 year and Board members for terms ending in 1984 and 1985. New officers are Information Officer Orrin Long and Secretary Kay Seward. New to the Board is Susan Henley (replacing Orrin Long) whose term expires in 1984. The other officers and the Board members whose terms expired in 1982 were re-elected. Ellen Holway will continue to serve as membership chairwoman. The names of the Board members, their places of residence and the expiration year of their terms are presented below.

Terms Expiring in 1983

Victor Conrad	Washington County
Ralph Donnelly	Washington County
Carl Linden	Montgomery County
Nancy Long	Montgomery County
Bonnie Troxell	Allegany County

Terms Expiring in 1984

Tom Hahn	Jefferson County
Paul Hauck	Montgomery County
Susan Henley	Prince William Cty
Bruce Wood	Prince George's Cty
Barbara Yeaman	Montgomery County

Terms Expiring in 1985

Rockwood Foster	Washington City
Brad Haigh	Fairfax County
Mel Kaplan	Washington County
Joan Paull	Montgomery County
Ken Rollins	Caroline County

NOTES OF THE ASSOCIATION BOARD MEETING OF MARCH 13, 1982

An Association office in the Entler Hotel? - The American Canal Society would like the Association to share an office the Society now maintains in the refurbished Entler hotel in Shepherdstown. The Board will evaluate a complete proposal from the Society at the Board's next meeting. One of the issues is determining the value to the Association of an office with the Association's "name on the door."

The Justice Douglas Memorabilia - Member Ralph Donnelly, a director of the Bowman fund, said that fund has more than \$50,000 available for use in

Washington County by nonprofit groups on historical projects. He feels that the Association could obtain a grant to acquire fireproof files and storage facilities for the Douglas memorabilia owned by the Association.

New appointed positions/Bylaws review - The Board postponed action on the establishment of new appointed positions—Assistant Membership Chairperson, Assistant to the Level Walker Chairperson, Hospitality Chairperson and several Project Chairpersons—proposed by the nominating committee at the Feb. 27, 1982 membership meeting. One reason for postponement was general uncertainty over whether a procedure for establishing new positions is specified in the Association's bylaws. In this regard, the Board carried a motion that authorizes the President to establish a Bylaws Review committee.

Other items - Board members will work with the Park Service to develop several "in-depth" interpretive programs. Vice President Davies will report to the Board on favorable locations above Great Falls for an operating canal barge.



LOGGERHEAD SHRIKE

TREASURER'S REPORT FOR 1981

Checking account balance December 31, 1980	\$1589.25
<u>Receipts during calendar 1981:</u>	
Dues	2918.00
Receipts for April hike	2216.15
Receipts for October hike	975.54
<u>Disbursements and expenses during calendar 1981:</u>	
Presidents' expenses(incl. new letterhead)	\$192.83
Treasurer's postage	40.00
Membership chairwoman	47.93
C&O Canal patches	301.36
Level Walker chairman	26.00
Maryland Conservation Council dues	35.00
Capital film labs(historical film preservation)	670.69
Lunch for Hikanation group	40.24
Newsletter costs(incl. printing and postage)	1526.86
April hike(\$21.14 deficit)	2237.29
October hike(\$24.46 deficit)	1000.00
Checking account balance December 31, 1981	\$1581.74
Savings account balance December 31, 1980	\$3816.61
Interest received calendar 1981	204.33
Savings account balance December 31, 1981	\$4020.94

NOTES OF THE C&O CANAL NHP ADVISORY COMMISSION MEETING
OF DECEMBER 5, 1981

The Advisory Commission was established by the 1971 federal law (PL 91-644) which established the C&O Canal National Historical Park. Congress gave the Commission a lifetime of ten years; in 1981 Congress amended the law to extend the Commission's life for another ten years. The Park Service evidently regards the amendment as not merely an extension of the Commission's life, but as a requirement to create a "new" Commission with the same authority and responsibilities as the "old" one. The effect of this interpretation has been to make present Commission members uncertain if they are to remain members, and to infuse recent Commission meetings with motions of advice for the "new" Commission and reflections on accomplishments and mistakes, and the personal experience of being a Commission member. The minutes of this last meeting of the "old" Commission are turgid with both nostalgia and optimism, romanticism balanced by empiricism. Various Commission members are quoted from time to time in the account below.

Development Concept Plans

Cumberland/North Branch

The Park Service is selecting its "preferred alternative" for incorporation into its "record of decision." A group of NPS employees and Commission members visited the area recently, with the alternatives put forth in the NPS' Environmental Assessment in mind. The group decided that important items included stabilization and restoration of the Evitts Creek aqueduct, rewatering where feasible ("to bring the canal alive"), maintenance of towpath, Blue Spring and river accessibility (especially in view of the proposed route 51 realignment), and use of the Western Maryland railroad station in Cumberland as a visitor center. The group also decided that "there is really not a great need" for substantial alterations in the Spring Gap area.

"Imagine an aqueduct
that actually works."

Williamsport

The planning committee has completed a "draft planning proposal." The proposal central issues are preservation, restoration, access, circulation and parking lots. The proposal provides for stabilization of the Conococheague aqueduct (at a cost of \$4 million), and for rewatering from the turning basin to lock 44. Options include a barge, an alternate motor vehicle route to the power plant, restoration of all structures, and the relocation of Canal Park headquarters offices to Williamsport. Proposed parking facilities will accommodate 600 to 1,000 people.

Williamsport, like other small communities along the canal, has been hoping for increased Park Service attention for some time. Although the local citizens do not want to be overwhelmed by visitors bringing destruction upon the quality of their lives, they look forward hopefully to a revitalized historical and recreational resource along with the anticipated influx of visitors with money to spend. The citizens are impatient. The Commission reported that in a meeting with town residents at the Williamsport library "their main concern was to see something happen."

Brunswick

The "draft preferred planning proposal" has been completed. The major issues covered were extent of restoration and control of visitor use. The citizens of the town of Brunswick realize that their present use of the towpath as road for motor vehicles to gain access to the town campground (between the canal and the river) and sewage treatment plant is prohibited by the Park general plan. The Park Service would like to see the road to the campground run along the railroad tracks and cross the canal at the camp-

ground. It would also like to eliminate the boatramp underneath the route 17 bridge in favor of the one at the campground. The railroad has so far been unwilling to allow the building of a road along the railroad tracks.

The Rock Run Advanced Wastewater Treatment Plant Effluent Line

The MacArthur Blvd./old trolley line right-of-way was determined by the US Army Corps of Engineers to be unsatisfactory because of the potential for intrusion of wastewater pollutants into the existing drinking water mains, and the susceptibility of the area to damage from the blasting needed to install the line. There seem to be two remaining alternatives for the routing of the effluent line from this proposed plant (the need for which is apparently still controversial): along River Road and across the canal under an existing culvert at Little Falls, or under the George Washington Parkway.

On Trying to Manipulate the Park Service

The Commission asked the National Park Service to send a representative to a public meeting on the Rock Run project. A representative of the Park Service responded:

If the Commission is asking the NPS to testify as to the impact on (Park) resources, that is fine; but if the NPS is to get into a position where people look toward the federal agency to stop the whole project because a permit is required, the NPS would rather not (testify).

Presumably, the Park Service is saying that it will not be manipulated into refusing a permit to cross parkland, thereby scuttling the project, if the project turns out, through appeals to both law and reason, to bring more benefit than harm to society. Hopefully the NPS does not mean it will shrink from its responsibility to refuse a permit for a project which is unnecessary, for which there is a non-intrusive alternative, or which would be grossly destructive of the Park.



Along the Towpath is published from time to time by the Chesapeake and Ohio Canal Association, a non-profit organization, PO Box 66, Glen Echo, MD 20812-0066.

Editor is Robert Greenspun, 316 E Mason Ave, Alexandria, VA 22301. The editor welcomes correspondence and contributions.

Association officers for 1982-83 are:

President: John Chandler, 6718 Persimmon Tree Road, Bethesda, MD 20817
 First Vice President: Bill Davies, 125 W Greenway Blvd., Falls Church, VA 22046
 2nd VP & Level Walker Chmn: Lyman Stucker, 2811 Farm Road, Alexandria, VA 22302
 Secretary: Kay Seward, 5103 Acacia Ave, Bethesda, MD 20814
 Treasurer: Emmie Woodward, 9017 Old Dominion Drive, McLean, VA 22102
 Information Officer: Orrin Long, 3321 Hartwell Ct, Falls Church, VA 22042

Association Dues: One year \$8, patron \$15

The "Old" Commission's Advice to the "New" Commission

Look carefully at commercial use of parkland and river overuse.

Refine the Cumberland/North Branch development concept plan, paying particular attention to the route 51 realignment, berm side development, the fragile condition of the Evitts Creek aqueduct, and the Blue Spring.

Emphasize historical preservation and a realistic approach to a plan for the Brunswick area.

Evaluate the Park "horse policy."

Pay careful attention to the Rock Run plant effluent line route.

Require Commission members to maintain good attendance records at meetings.

Establish a Justice Douglas fund in the Park.

Commission Members' Remarks

On Local Planning: Plans are on schedule because planning is now principally being done locally. The planners and their teams are now realistic. (The Superintendent) is down-to-earth (recognizing the importance of) the people (and) their participation. "The great mistake was not enough community involvement."

On Protecting the Canal From the Deleterious Effects of Adjacent Construction Projects: "...maybe eventually there will be the same kind of commercial pressure elsewhere When you walk through the Georgetown section of the canal now, you are not (able) to understand the canal's reason for being, its construction and role in transportation. You see some exterior decoration which is what this place has become with shopping debris.... No more fire exits onto the canal.... The superintendent here now has the right attitude.... We were asleep for a while and lost some bad ones. Let's not have any more of it."

"As for protecting the canal from the West Virginia side, we have not done too well with Jellystone."

On Accomplishments: "The members (of the Advisory Commission) have brought forth many important things and have accomplished a great deal, in that parcourses are not (in operation) up and down the canal, for instance...."

The Superintendent's Remarks

On the General Plan: "It is one of the finest general plans in the National Park Service. It is simple, well thought-out and easy to read. I urge that we not change this plan without...some darned good reasons."

On the Compilation of the Texts of all Advisory Commission Motions: "The Book of Motions is meant simply to be a reference.... Some of the one sentence motions you see are actually 10 and 20 pages long. They are very interesting."

On the Transcripts and Tapes of Advisory Commission Meetings: "There are all kinds of presentations, commitments, ideas, deliberations, dramas and philosophies...sprinkled throughout."

And the Closing Remarks of a Longstanding Commission Observer: "The presence of an Advisory Commission in all the bills (attempting) to create the park



was political in a sense, trying to make some kind of connection among the people who live up and down the valley. The Commission has been much more effective than I ever thought it would be."



BLACK-AND-WHITE WARBLER



BLACK-THROATED BLUE WARBLER

The President's Column

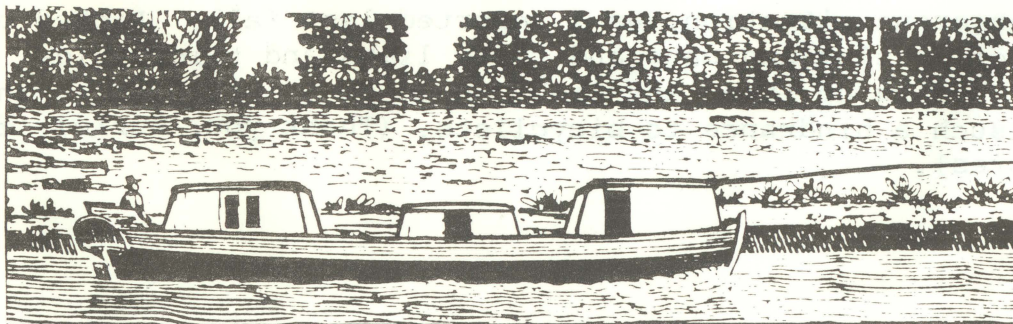
THINGS TO COME

The experiments of the past year have been successful. Your Association sponsored the first Canal Heritage Walk last October, as a complement to the spring reunion hike that has been held annually for 27 years. The Heritage Walk was well attended, and the subsequent social hour and dinner at the Izaak Walton League were thoroughly enjoyable. Then the Association held its annual meeting in February 1982, the first time the annual meeting has been separated from the spring reunion hike. This, too, was well attended and was highlighted by an outstanding presentation by staff members of the C&O Canal National Historical Park. The cooperation between Park Service and Association could not have been better. Reactions to the Heritage Walk and the new time for the annual meeting have been uniformly favorable and enthusiastic. These events will be scheduled again during the coming year and in future years so long as interest is sustained. Thus we have moved from sponsoring one major membership event per year to three such events.

Many would like to do more. The suggestions for additional Association events cover a broad range—canoe trips, bicycle tours, nature walks and volunteer projects. Some of these would require little planning and would take only the initiative of one or two people to make arrangements. Volunteer programs would require working closely with the Park Service, which has assured us of its cooperation.

The Association's Board will be exploring ways to provide more events. The coming year will feature more experiments as we work toward a program that will meet the various preferences of our members.

John Chandler



LEVEL WALKER NOTES

Thank you for excellent Level Walker reports plus your enthusiasm and attendance at the Association activities. Thanks to "Mac" McGraw for assisting on the brief Antietam Battlefield walk. "Mac", when he was 10 years old, talked with General Miles at Antietam.

Our walk on the first day of Spring, March 20, was threatened by early morning rain. At exactly 10:00 a.m. the skies cleared resulting in 14 canal buffs enjoying a delightful 9 mile walk from Dargan Bend. The companionship and good food after the walk made us feel that it was "another good day on the towpath."

As always, we welcome new Level Walkers. Add these fellow walkers to your roster:

Sect. 29 - Judith Thomas, P. O. Box 177, Keedysville, MD 21756 - 301-432-8427.

Sect. 52 - Kent Minichiello, 3118 18th St., N.W., Washington, DC 20010 - 202-265-7396

Sect. 68 & 69 - Amira Unver, 100 Bryn Mawr Ct., E-415, Pittsburgh, PA 15221

Make the following corrections in your copy of the membership list:

Sect. 14 - Correct spelling - Gladys Horton

Sect. 15 - Correct the Rhodes' zip code and phone # - 20016 - 202-363-8187

Sect. 62 - New address and phone # for Bruce Wood - 6802 Drexel Rd., College Park, MD 20740 - 301-864-4678

A walk is scheduled for MAY 22. Meet at 10:00 a.m. at the Park Service Visitor Center in Hancock for a short meeting and to see the exhibits. We will walk upstream to the vicinity of Roundtop. Ralph Donnelly will be in charge. He is an authority of this beautiful area. Don't miss it!

Leyman

LEVEL WALKER REPORTS

Sect. 60 - Culvert Opposite Little Cacapon to Town Creek-Muriel Olszewski-10/81

Began my walk at Town Creek Aqueduct. Thank you for the new railings. It was a very dangerous situation, as I reported last fall. Picked up two large plastic bags of bottles and cans and threw limbs and twigs aside. Do wish that persons cutting up trees and limbs would do it off path so that trimmings would not be such a hindrance to bicyclists. (Thank you, Muriel, for the excellent pictures).

Sect. 22 - Weverton to Lock 33 - Gertrude Mahn & Betty Bushell - November 1981

Towpath is in good condition with the exception of occasional muddy spots in which ruts (tire tracks) were noticed indicating that a vehicle had been driven on the towpath - possibly Park Service.

The Blue Ridge Hiker-Biker seems to have disappeared. In general, towpath, culverts, etc. are in good shape, with no obstructions.

Sect. 26 - Mountain Lock to Antietam Aqueduct - Theresa Haddy - September 1981

The campgrounds and the towpath itself were in excellent condition. There was a small amount of litter, and we picked up a number of empty cans. The dumps of large trash that I had noted on previous occasions, on the berm side of the canal, were not noticeable on this visit. I believe they were covered by vines and undergrowth. I am happy to be able to send in a good report on my section of the towpath.

Sect. 30-31 - Snyders Landing to Marsh Run Culvert - Art & Hal Cramer - 10/81

Condition of towpath was excellent for hiking, running and biking.

Sect. 32 - Marsh Run Culvert to Dam 4 - Edith & Marvin Wilkerson - November 1981

The towpath was in good shape although well covered most of the way with autumn leaves. Park Service maintenance personnel had cut and stacked a number of old dead trees along the towpath, mostly old sycamores.

Big Woods HBO was in satisfactory condition. Someone had scratched the information on the HBO sign that water is available 400 yards down river.

Sect. 35-36 - Formans Ferry to Falling Waters - H.A.Thornhill - September 1981

The towpath for the area covered by this report is in excellent condition. Campsites at Opequon Junction and Cumberland Valley Biker-Hiker Overnight were in good condition. Both showed little evidence of recent use.

Sect. 38 - Williamsport to Pinesburg Station - Melvin Kaplan - November 1981

The towpath was in excellent condition, the canal bed or prism with the exception of trees was about the best I have seen for a long time.

There were two large holes in the floor of the Bollman Bridge. I reported this to Supt. Stanton who informed the town administrator of the condition, as the Town of Williamsport has the responsibility of the maintenance of the bridge

Sect. 42 - Lock 47 to McCoys Ferry - Kretzer McGraw - October 1981

This section in fine shape, no vandalism or damage noted on this visit. Reports of thieving from campers at McCoy's Ferry of camping equipment etc., broken up by good work of the Rangers in apprehending the group.

Sect. 44 - Fort Frederick to Ernestville - Jane Larsen - November 1981

There was hardly any trash or brush to pick up, but I would like to call NPS's attention to two fallen(dead) trees partially obstructing the towpath: one just beyond the 113-mile marker, the other just after the 114 marker.

Sect. 47 - Mile 120 to Hancock - Jim & Sally Bryant - April and November 1981

Towpath and canal in excellent condition. Canal bed is being cleared from Tonoloway Aqueduct to the park in Hancock. Maintenance along level very good.

Good to see rail fixed at Tonoloway Aqueduct. Saw large flocks of cedar waxwings. Many woodpeckers, including one pilated.

Watering of canal not complete. No water east of 124.1 mi.

Sect. 17 - Monocacy Aqueduct to Nolands Ferry - Terry & Bob Ledley - Feb. 1982

We were particularly thrilled to note that the culvert at the Tuscarora Creek has FINALLY been repaired. We had been increasingly dismayed at each previous visit to see that the collapse was encroaching on the towpath walkway itself, and terribly dangerous. The repair is excellent. It has been built up and re-sodded, and is sturdy, functional and most attractive. This whole section was in fine shape. Downed trees had been freshly cut and removed, signs, including mileage markers, were freshly painted, and the picnic area at Nolands Ferry seemed ready and waiting for the tables and trash cans to return for Spring.

Sect. 18 - Nolands Ferry to Point of Rocks - Kay Seward - February 1982

The old stonework, I noticed, near the parking lot on the side facing the towpath has lost some stones and others are loose where some roots are visible. It appears that one tree rooted in the stone work that had been cut down previously is re-sprouting.

We greeted a man and a woman hiking towards us in this area. Mole trails criss-crossed the tow path in a number of places and new green shoots were coming up all over.

On my return walk I hauled 3 large rusting drums from the canal and filled them with cans and bottles and bits of plastic. I left one by the campsite and carried the others full to Noland's Ferry.

We met 4 more people who had hiked over to the tow path from the fields. Their female dog, Blossom, made Sam's day. In spite of all the negative things this report contains, most of the walk was beautiful and I enjoyed the time there.

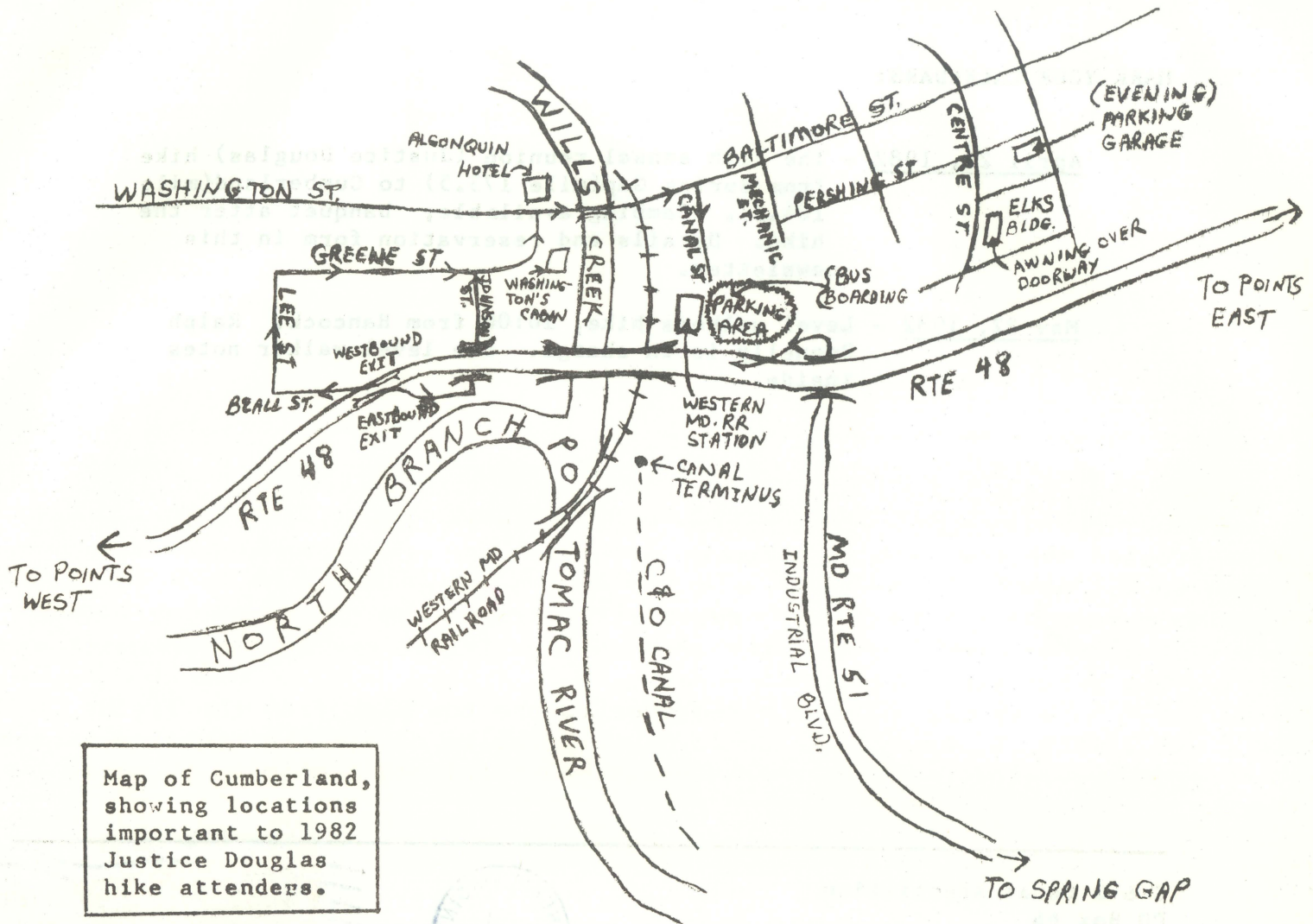
Sect. 44 - Fort Frederick to Ernestville - Janet & Harold Larsen - February 1982

As to what made this an "unusually rewarding" visit: Big Pool was iced over from shore to shore, a condition we have seen and reported on before (Jan.1981). As we began our walk, however, we were soon conscious of an unusual sound: an intermittent booming or rumbling as of thunder. Was it hunters? the Maryland militia? distant traffic? After pondering the mystery for a while, with the rumblings sometimes near, sometimes distant, we concluded that the source of the sound was ice cracking on Big Pool (temp. was upper 30s). It was happening up and down, all across the pool, and indeed we could see fissures in the ice that reached clear across the pool. It was an eerie sound, somewhat mournful, like that of trees when they rub against one another in the wind. It was also a new and interesting experience.

Sect. 56 - Green Ridge Station to Lock 61 - Jeremy Parker - September 1981

We surveyed our section on bicycles this time, approaching it through the Paw Paw tunnel. There were a few mud puddles, and one place where potholes had been filled with uncrushed slate from the tunnel rockslides, but generally the surface is excellent for cycling.

Of note on Park Service action at Outdoor Club Road. The Park Service is about to remove the dump of rockslide material stored here from work on the tunnel.



Reservation Form for Lunch and Dinner

C&O CANAL ASSOCIATION

1982 JUSTICE DOUGLAS HIKE

Please reserve _____ lunches at \$4.25 eachAmount \$ _____

Please reserve _____ dinners at \$9.00 eachAmount _____

Total Enclosed..... \$ _____

Make checks payable to the C&O Canal Association and mail with this form (save map above) to Treasurer Emmie Woodward, 9017 Old Dominion Drive, McLean, VA 22102. YOUR RESERVATION MUST REACH EMMIE BY APRIL 14, 1982

C&O CANAL ASSOCIATION 28TH ANNUAL REUNION HIKE RESERVATION FORM

MARK YOUR CALENDARS:

April 24, 1982 - The 28th annual reunion (Justice Douglas) hike from Spring Gap (mile 173.5) to Cumberland (mile 184.5). Camping available; banquet after the hike. Details and reservation form in this newsletter.

May 22, 1982 - Level walkers hike, 10:00 from Hancock. Ralph Donnelly is in charge. See level walker notes inside.

C & O Canal Association
PO Box 66
Glen Echo, MD 20812-0066



FIRST CLASS MAIL

John C. Frye
Gapland, MD 21736

- o 1982 Justice Douglas Hike
Details and Reservation
Form
- o New Printing of Great Falls
Plan
- o New Officers and Board Members
- o Board Meeting Notes
- o Treasurer's Report
- o Advisory Commission Meeting
Notes
- o President's Column
- o Level Walker Notes and Reports