



C & O Canal Association

ALONG THE TOWPATH

concerned with the conservation of the natural and
historical environment of the C&O Canal and the Potomac River Basin

VOLUME XXI

JANUARY 1989

NUMBER 1

SEEKING ADVENTURE? SIGN UP FOR APRIL HIKE!

by

Sandra Hemingway

Put adventure into your life by joining the C & O Canal Association on its two-week anniversary hike of the complete 184.5 miles of the Canal, April 15-29, 1989.

Or, if your schedule (or feet) won't allow two weeks' worth of adventure, join the hikers for a week, a weekend, or just a day. A registration form for the hike, special banquets, and motel rooms (when the itinerary calls for it) is at the end of this issue. Preregistrants should deduct money already paid from the total cost.

The April 1989 hike commemorates the 1954 walk by U. S. Supreme Court Justice William O. Douglas that ultimately saved the towpath from becoming a highway and resulted in the establishment of the C & O Canal National Historical Park.

The anniversary hike will begin at Cumberland on Sunday, April 16 (following a banquet on Saturday night at the Western Maryland Station Center on Canal Street in Cumberland), after a sendoff by local bagpipers. It will end on Saturday, April 29, at Tidlock in Georgetown. A banquet and general good-time session at Hogate's Restaurant on the Washington waterfront will close out the hike on Saturday evening, April 29.

To give hikers a chance to break in feet and shoes, the first day's trek will be (only!!) 11.1 miles, followed by an 11.3 mile hike the following day and a 6.1 mile hike on Tuesday, April 18. Hike lengths vary on subsequent days from 16.3 miles to 9 miles--but will generally be at least 15 miles. A full hike schedule is printed

(continued on page 8)

HARPERS FERRY SELECTED FOR ANNUAL MEETING ON MARCH 4

Saturday, March 4, is the date set for the annual meeting of the C & O Canal Association to be held at the Cliffside Inn in Harpers Ferry at 2 p.m.

Prior to the meeting, there will be a Coffee Hour at 1 p.m. so that members may meet and chat with candidates for officer and board of directors positions.

The meeting's agenda includes the election of officers and directors, treasurer's report, and reports from the following committees: Auditing Committee, Environmental Committee, Program Committee, 1989 Through Hike Committee, and Membership Committee. In addition, the membership will be asked to ratify an amendment to the Bylaws (see page 3).

Schedule:

9:00 a.m. -- A walk on the towpath, led by Butch Henley. Meet at the Harpers Ferry side of the footbridge.

At time of your choosing: Lunch will be on your own at local restaurants or brought from home.

1:00 p.m. -- Candidates' Coffee Hour at the Cliffside Inn.

2:00 p.m. -- Annual Meeting begins at Cliffside Inn.

4:30 p.m. -- Adjournment of Annual Meeting.

4:30 p.m. -- Happy Hour begins at the Cliffside Inn.

6:00 p.m. -- Dinner, \$9.00 per person by reservation, at the Methodist Church in Harpers Ferry. (Use reservation form on the last page of this issue.) Entertainment to follow dinner.

(continued on page 2)

PRESIDENT'S COLUMN

by

Hal Larsen

Elsewhere in this issue is information about the 35th Justice Douglas Reunion Hike, this year a full-distance walk from Cumberland to Washington on April 16-29, 1989. This trek commemorates the first one, led by Supreme Court Justice William O. Douglas, who sought to preserve the C&O Canal as a national historical park.

On March 20, 1954, the Justice and 35 other hikers set off from Spring Gap, Maryland, on their demonstrative hike as an effort to keep the canal from becoming a freeway. Then referred to as the Canal Parkway, a concept analogous to the Sky-line Drive in the Blue Ridge Mountains, the proposed road was earnestly debated on Capitol Hill. The U. S. Department of the Interior and The Washington Post supported the scheme. The freeway would parallel the canal bed or in part run right on it. Douglas and his companions opposed the highway because it would eradicate a beautiful and quiet place along the Potomac that they believed should be maintained for public enjoyment. The Justice, whose death in 1980 was a great loss to the canal, was the prime mover in mobilizing public support for preserving this long, narrow strip.

During the construction that began in 1828, the C&O Canal Company and the Baltimore and Ohio Railroad had competed for the narrow space along the Potomac. Both enterprises started to build on the same day in 1828. A canal section was finished by 1830, but the waterway was not completed to Cumberland until 20 years later, while the rails were laid to that city by 1842. The canal had to compete not only with the railroad but also with nature, and the battle was distinctly one-sided. Although the canal operated profitably between 1871 and 1888, the profits were lost to floods. In 1924 floodwaters doomed the nearly 100-year-old canal.

In 1938 the U. S. purchased the canal from the railroad. Wondering what to do with this property, the government first considered using it as a recreation area and then settled on the parkway concept. Advantages were perceived. The road would give jobs to people in Cumberland, a welcome event at a time when local industries were in decline and unemployment was high. The road would give many people access to

the beautiful river basin just as the Sky-line Drive made the Blue Ridge accessible to visitors in the 1930s. In addition, the parkway would provide a passageway much easier than the mountainous Route 40. A highway paralleling the Potomac would bring commerce and jobs to communities along the way.

Thanks to Justice Douglas' dramatic hike from Spring Gap to Washington, the canal was spared. But not everyone is happy with today's park. There are people who fret about the bars to ready access to the riverbank, desirable for boating, fishing or weekend cottages. Some would like to use the canal for roadways to ease local traffic. Not everyone is going to appreciate the scenic beauty as did Justice Douglas and his companions. To many people who live along the river greater access is the paramount consideration.

One can sympathize with those who don't have ready access to their river. Still, as we participate in the 1989 Reunion Hike, we will remember the reason for the ardent plea by Justice Douglas. Anyone who sees a misty river in the early morning light while he hears only water, trees, birds and awakening fellow campers cannot help but appreciate how important it is to preserve this fragile strip. This experience was very convincing in 1954, just as it will be again 35 years later.



(continued from page 1)

President Hal Larsen cautions that, owing to the heavy agenda for this meeting, it will be necessary to restrict presentations to the absolute minimum. Therefore, anyone who wishes to make presentations at the meeting must signify their intention to the president by February 15 in order to be entered on the agenda. Requests from the floor to make presentations will not be recognized unless there is time at the end of the formal meeting. However, there will be the usual opportunity for questions and for discussion of issues arising from the reports.

--Information provided by Hal Larsen

THE ASSOCIATION WELCOMES NEW MEMBERS

Dawn E Beaumont, Shepherdstown, WV
H Ronald Berg, Winchester, VA
Harold Davis, Bethesda, MD
James J Doherty, Chevy Chase, MD
Robert L Ebert, Cumberland, MD
Yvonne E Facchina, Washington, DC
John Fondersmith, Washington, DC
Alan & Win Fox, Chevy Chase, MD
Kathleen Franck, Silver Spring, MD
Edward M Fry, Washington, DC
Frances Gallegos, Wheaton, M D
Mr/Mrs John Basil Gantt, Arlington, VA
Judy Gibb, Columbia, MD
Mrs James R. Grandin, Bethesda, M D
Rachel R Hecht, Washington, DC
Carol & F Wayne Jarvis, Jr, Potomac, MD
Karen Jensen, Rockville, MD
Christa J Johnson, Gaithersburg, MD

Mary L Johnson, Gaithersburg, MD
Robert & Karen King, Cumberland, MD
Ken Lacy, Bethesda, MD
Larry Langan, Laurel, MD
Samuel Larcombe, Santa Fe, NM
Ronald R Lichtinger, Frederick MD
Samuel S D Marsh, Esq, Bethesda, MD
John C Marziani, Bowie, MD
Mr/Mrs Earl Mills, Harpers Ferry, WV
Vince Neradka, Rockville, M D
Diana M Niskern, Washington, DC
Madeleine O'Brien, Gaithersburg, MD
Sandra Day O'Connor, Washington, DC
Jo & Grant Reynolds, Potomac, M D
Elena M Sacchet, Chevy Chase, MD
Joel R Schulman, MD, Potomac, MD
Richard H Tibbets, Chevy Chase, MD
Michael Vidmar, Harpers Ferry, WV



MEMBERSHIP LIST TO BE EXCHANGED

On December 4, 1988, the Board of Directors approved the following motion:
"That the C&O Canal Association be ready to exchange its membership list on a carefully selective basis with organizations having similar purposes as the Association with the proviso that members be afforded the opportunity to exclude themselves from a list prepared for such an exchange. Care is to be exercised to keep with the Association's financial means in any expenditures connected with membership recruitment activities resulting from exchange of lists."

On the basis of this decision by the Board, the Permanent Membership Committee will proceed to exchange membership lists as directed by the motion. Any member who does not want his name on the list to be exchanged should notify the Chairman of the Permanent Membership Committee, James G (Gil) Hill, 10600 Gainsborough Road, Potomac, MD 20854; tel: 301-983-9284.



BYLAW AMENDMENT PROPOSED

On September 25, 1988 the Board of Directors approved a motion to amend the C&O Canal Association Bylaws as follows:

"In the event that the President and the board judge that an officer is not performing his duties in an acceptable manner, the President, with the concurrence of 2/3 of the board members present, is directed to remove the officer." This amendment would appear as the final paragraph of Article III of the Bylaws.

The President intends to submit this amendment to the Association membership for ratification at the next annual meeting of the membership on March 4, 1989.

This notice is given to comply with the requirement of Article VIII of the Association Bylaws that an amendment to the Bylaws shall be ratified by a majority vote of the members attending a meeting of the Association and that notice of the amendment shall be given to all members no less than 30 days before the meeting.

1989 CANDIDATES

MEET THE CANDIDATES

Saturday, March 4, at the Cliffside Inn at 1 p.m., an hour before the Annual Meeting, the candidates for the C&O Canal Association officer positions and Board of Directors will be present at a coffee hour for members to meet and chat with. Join us!

ASSOCIATION OFFICERS:

PRESIDENT:

Harold A. (Hal) Larsen
McLean, Virginia

I am a candidate for re-election as President because I am interested in continuing the programs put in motion during the past several years, particularly those related to increasing membership and to environmental problems. Beyond these interests, it would be my role to implement all policies established by the Board of Directors, and I would dedicate my efforts to this function.

FIRST VICE PRESIDENT:

William E. (Bill) Davies
Falls Church, Virginia

I was on the original Douglas hike in 1954 and was one of the founders of the Association and have been a member ever since. I was an officer or Board member for all but one year of that time. I am a retired geologist (USGS) and have spent much of my time roaming the Appalachians. My interests in the canal are to aid in re-establishing adequate interpretive services by the Park Service, to promote support for more funds to maintain and restore the canal, and to prevent real estate development and industry from encroaching too closely to canal lands. I plan to encourage the Association to develop 1) an active outreach program to schools and institutions to spread knowledge of canal and park; 2) a program of historical and other publications; 3) a lecture series pertaining to canal history, folklore & related subjects. I would urge the Association to establish a definite home for the Association and its files, and to take an aggressive position on maintaining a history of the Association.

SECOND VP AND LEVEL WALKER CHAIR:

Karen M. Gray
Washington, DC

I have been a member since 1977 and level walker since 1978, have served as Information Officer and on the Board of Directors and chaired this year's Nominating Committee. My interest in the canal is threefold: as an environment for recreation; as a property that preserves historic remnants of American history and technology; and as a natural area sheltering plants and animals and providing a rich resource for studying regional geology and ecology. I intend to organize level walker hikes every six to eight weeks and hope to have available for each someone knowledgeable on canal history, natural history or other related area to accompany the hikers and help us broaden our knowledge and deepen our experience of the canal. The hikes will be scheduled to avoid conflict with other major Association activities such as work days; and advice and information from the Park Service staff will be specifically sought to improve the usefulness and effectiveness of the level walker program.

(continued on page 5)

(continued from page 4)

SECRETARY:

Alan E. Hedin
Silver Spring, MD

I have been a member of the Association for approximately sixteen years. After being a level walker in the early years and secretary in 1975, I have been relatively inactive until elected secretary again last year and I would like to continue as secretary for another year. I believe a steadily increasing membership is important for improving the effectiveness of the Association in protecting the canal. I also believe the Environmental Committee has been very important in providing more detailed balanced advice on matters affecting the canal than was always available in earlier years.

TREASURER:

David M. Johnson
Bethesda, MD

Member of the Board of Directors since 1985; chairman of the Environmental Committee since 1986, level walker and active participant in NPS volunteer projects, I served on the Budget Committee in 1984 and 1988, and Internal Audit Committee in 1987 and 1988. I would attempt to maintain fiscal integrity in accordance with the high standards established by the current treasurer and his predecessors. I am familiar with our financial operation through participating in the budget and audit reviews. In addition I have over thirty years experience in financial management. I would continue to support the Association's active role on environmental threats to the Park and efforts to stimulate greater membership participation in Association activities.

INFORMATION OFFICER:

Sandra Hemingway
Alexandria, VA

I have been a member for three years and served on the Board of Directors for a year. In addition to presently handling publicity for the '89 through hike, I handled the mailing to the membership for the '88 Fall Heritage Hike. My position as Washington Bureau Chief for a series of trade publications on the transportation and tourism industry and past experience as a reporter on a daily newspaper provides me with considerable background for the job of information officer. I have a keen interest in the environmental issues relative to the canal and to the work being done on the archives which I believe have considerable potential for use in public relations activities by the Association.

CANDIDATES FOR BOARD OF DIRECTORS

(There are seven vacancies. Candidates are listed alphabetically.)

Victor P. Conrad
Hagerstown, MD

When a small boy in Williamsport in the early 1920s, I swam in the C&O canal in summer and skated on it in winter and often stepped onto the laden barges at the Williamsport aqueduct and rode down to the lock. I am one of the original Park level walkers, and was active in the effort

(continued on page 6)

(continued from page 5)

to establish the Park. Hence I have almost a proprietary interest in the Park. I am presently Organizational Liaison Representative and member of the Environmental Committee. If elected a director, I would pursue the following priorities: (1) to protect the Park from all commercial or local governmental encroachment whatsoever, opposing any move by anyone that would adversely affect the serenity and tranquility of the Park and its wildlife. (2) I have seen at first hand the destruction the Potomac River can cause in the Park area. I would press for completion and implementation of plans to minimize flooding from the Potomac and its tributaries. (3) I favor the re-watering of a level in the central areas of the Park (the Hancock-Williamsport area), and the operation of an AUTHENTIC canal barge pulled by mules on that level for the enjoyment of the public. (4) I would press for establishment of guidelines to prevent overuse of all areas of the Park as they become necessary. (5) I would enlist the help of other organizations of conservationists and environmentalists and like-minded people to help our Association to accomplish all these activities.

A. Vernon Davis

Hagerstown, MD

As a longtime journalist and people-to-people communications professional based (and living) in Hagerstown, I have long been active in informing the public about the history and heritage and the longterm value of the C&O Canal in America's culture. My first regional "scoop" came when I was a reporter/photographer of the Hagerstown MORNING HERALD, and it involved the neglected C&O Canal and the abandoned, rotting "downtown" Harpers Ferry. The year was 1948. My direct coverage and interest and participation in the saga of the Justice Douglas saving of the canal and development of the National Park came from the beginning years, focused through my local newspaper days. Since 1975 I have owned and published a local history and heritage magazine based in Hagerstown, called the CRACKER BARREL, "upgraded" a year ago to MARYLAND CRACKER BARREL. In this monthly commercial journal we have published many C&O Canal stories and photos, and now aspire to cover "community" throughout the state. With this enlarged "charter" has come plans for digging deeper into the C&O Canal heritage along its full length, and a commitment to help "defend" the National Park from "new day" challenges of bloated metropolitan sprawl and well-meaning but badly-placed plans for such things as the proposed community highway access project at Cumberland. I believe that my ongoing participation, interest and enthusiasm for matters C&O Canal qualify me to be considered for membership on the Board.

Judith A. Hecht

Washington, DC

I spend as much time as possible enjoying the outdoors. Along with the many others in the area, I have come to appreciate the history and varied recreational opportunities associated with the C&O canal and the towpath. I joined the Association because after benefiting from the park for many years, I wanted to contribute what I could so that others could continue enjoying its benefits. Also I strongly believe that organizations such as

(continued on page 7)

(continued from page 6)

the Association are needed to represent the views of local citizens who use and respect the canal and towpath to local, state and National Park Service officials. With these thoughts in mind, I became a level walker. I also became active in Association activities and was recently appointed to the newly formed Budget Committee. I am running for the Board because I want to help the Association continue its role. As a Board member I would work to ensure that the Association remains active in matters that affect the park, preserving its integrity while promoting environmentally sound uses.

Orin Long

Falls Church, VA

I have been a Member of the Association for over 10 years, am a former Information Officer, Level-Walker, and End-to-End towpath hiker. I am a firm believer in the necessity for Association vigilance in protecting the Canal Park and its environs from avoidable degradation and encroachment--no matter the source. I support the Association's volunteer program and other activities--educational, recreational, and social--that promote appreciation and enjoyment of the Park and the Potomac River basin.

Bettyjane F. Myers

Silver Spring, MD

I have been a member of the Association for five years. Currently I am a member of the Board. I have served on hike committees, am currently chairperson of registration for the 1989 Justice Douglas Hike, am an active volunteer in various work projects on the canal and other Park Service projects relating to the canal. I enjoy hiking the canal and my special interests are in the history and preservation of the canal, and efforts to keep it for future generations to enjoy. I believe that to keep the Association growing and moving forward members need to speak out to the public about the many assets of the canal and encourage them to join us on hikes and other outings to see for themselves (and perhaps to gain some new members). We also need to encourage young people to become active members of the Association. One way to accomplish this for all new members would be to include them as members on a task group or committee.

Charles M. Otstot

Arlington, VA

I have been interested in the C&O Canal Park since the 1960s and have been a Level Walker most of that time. I first "walked" Level 34 along the river passage from Charles Mill and on to Forman's Ferry. With the scouts of Troop 106, this section got a good biannual cleaning and the scouts had fun in Dellinger's Cave high above the canal-way. More recently I have "walked" Level 12 from Sycamore Landing to Edward's Ferry; and am a member of the Level Walker Action Team. I completed the end-to-end Douglas Reunion Hike in 1984. I am aware of the issues and concerns relating to the canal, and I believe I can contribute an Arlington Country perspective to the Board.

(continued on page 8)

(continued from page 7)

Thomas L. Perry

Williamsport, MD

My initial interest in the canal had to do with my hiking, biking and camping along its towpath. Over the years I have introduced many people to the canal and have shared in taking Boy Scouts, Girl Scouts, and church groups for short excursions and for "start to finish" trips along its length. From this involvement there has sprung also a love of the history and natural lore of the canal and a desire to protect and preserve the National Park from encroachment. My wife and I reside just off the towpath and together we function as level walkers. I would like to see more involvement from our neighbors and friends "upstream", and I very much favor the recent broadening of the activities of the Association.

William T. Van Lowe

Silver Spring, MD

[No statement available at press time.]

--Compiled by Karen Gray



(continued from page 1)

elsewhere in this issue.

Those participating in past anniversary through hikes report mixed weather (rain, sun, cold-to-cool weather) and a journey from winter, in the foothills of Maryland, to spring, at the Canal terminus in Georgetown. Veteran anniversary hiker Ken Rollins has volunteered to supply a list of "must-haves" for participants.

Logistics and support for hikers participating in the full two-week hike will be provided by the C & O Canal Association. Logistics for one week, weekend, day hikers, or any combination of walkers, will be coordinated by Bettyjane Myers (301-384-7857), generally using participants' cars. Hikers wishing to forego camping in favor of staying in motels along the way will be responsible for making their own reservations. Some coordination of transport may be possible if need is indicated on the reservation form elsewhere in this issue.

Breakfasts and dinners will be a mixture of catered affairs by organizations along the way, most of whose culinary expertise is well known by anniversary hike veterans, and in-camp efforts under the direction of Donna Boies. The hike committee promises there will be no cold pizza again for breakfast.

Hikers will be responsible for their own lunches. Donna will also need volunteers to guard the camp while the rest of the hikers are participating in in-town activities. Volunteer by calling 202-966-0358.

PROGRAM COMMITTEE BEGINS PLANS FOR 1989

Ken Rollins reminds us that it is time to start planning our program for next year. The Committee will be meeting early in the New Year to consider the results of the membership survey and any comments you would like to make directly. Drop Ken a note at Rte 4, Box 107, Ruther Glen, VA 22546 or call him at 804-448-2934. If you would like to avoid a long distance call from the Washington area, Hal Larsen can give you the number for a committee member near you.

Ken also wants to point out that members planning to participate in an event need to let the coordinator know at least three weeks in advance--particularly for biking and canoe trips which take considerable logistic planning. Too many people take things for granted and wait until the last few days to put the word in and by then the trip leaders will have canceled for lack of interest. This happened last year, and there were disappointments--we missed some good ones!

Please express your thoughts to the Program Committee so it can speak for you when it presents its plans at the annual meeting.

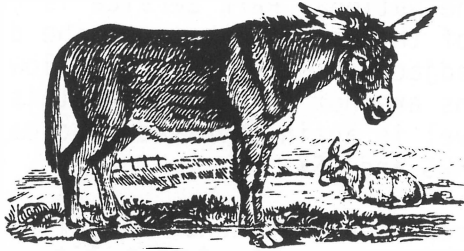
POTOMAC EDISON DONATES C & O CANAL MAPS TO WASHINGTON COUNTY HISTORICAL SOCIETY

When the Potomac Edison Company took over the hydroelectric generating stations on the Potomac River, the Company came into possession of a map of the C & O Canal. This map consists of 6 rolls, each of which spreads 50 feet and is 4 feet wide. Together they cover the entire length of the canal from the D.C. line to Cumberland. All of the buildings owned by the canal company are shown as well as the locks, dams, and other structures.

Accompanying this map is a folio of 20 sheets on which is listed the person from whom the land that the canal passed through was purchased, and the place where the deed is filed. This very detailed information will be of great interest both to students of the history of the canal and to genealogists.

These maps have been very carefully preserved by the Potomac Edison Company's civil engineering department but were not easily accessible to the general public. As a result of their generous gift to the Washington County Historical Society, they are now available for public use at the Society's library Mondays from 9 AM to 4 PM. The originals will be given special treatment to insure their preservation for the future.

The Washington County Historical Society is located at 135 W. Washington Street in Hagerstown, MD 21740. The phone number is (301) 797-8782.



MULE NEWS

The following memorandum, dated November 30, 1988, was received from Richard Stanton, Superintendent of the C&O Canal National Historical Park.

Subject: Molasses

We were saddened to hear of the recent passing of Molasses, one of our great park mules, at her retirement home in Manassas, Virginia. She joins Duchess in that great mule heaven in the sky.

We were pleased to report that Honeymoon is still living and enjoys her quiet retirement at a fancy farm in Etlan, Virginia.

We still have six working mules in the Palisades District who are, at present, enjoying their annual winter vacation at Tartan Farms in Poolesville, Maryland. They will be back with us at the beginning of the canal boat season in April, 1989. They are:

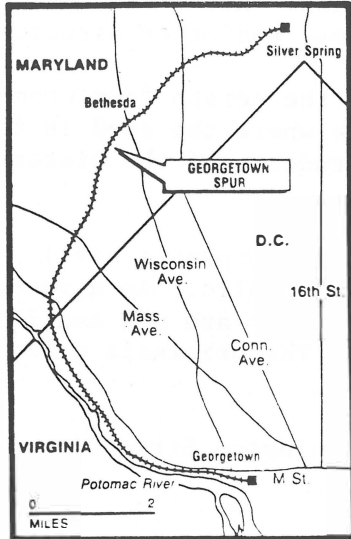
<u>Name</u>	<u>Canal Boat at</u>	<u>Age</u>
Kit	Georgetown	12
Kate	Georgetown	13
Frances	Georgetown	12
Ellie	Great Falls	7
Ida	Great Falls	8
Rhody	Great Falls	10

Our staff mule handler, Edie Roudebush, informs us that our working mules may possibly have another 15-20 years more with us. All are in excellent health and waiting impatiently for the 1989 visitor season to begin.

ENVIRONMENTAL COMMITTEE REPORT

by Dave Johnson

GEORGETOWN BRANCH - The Capital Crescent Trail moved a big step closer to reality on December 8th when the Montgomery County Council unanimously approved the county executive's request for an emergency appropriation to buy



the abandoned B & O right-of-way from Silver Spring to the D. C. line. The purchase will be in accordance with section 8(d) of the National Trails Act. The proposed trail will connect the C & O Canal towpath with upper Rock Creek Park by a hiking and biking path through downtown Bethesda. In November, speakers representing more than two dozen individuals and organizations, including the C & O Canal Association, testified in favor of the acquisition at a council hearing. Although hikers may eventually have to share the right-of-way with a light rail transitway between Bethesda and Silver Spring, the opportunity to create a network of trails in the suburban area, linking the canal towpath to other parks and trails and to the residential and business areas through which they pass, is a goal that we strongly support.

In the meantime, the National Park Service is continuing negotiations to acquire the 4.6 miles of the railroad between the district line and Key Bridge, including the section adjacent to the towpath below Arizona Avenue. Although details of the negotiations are not public, as of this writing (12-9-88) it appears that Laurel Sand & Gravel is again involved, and may be acting to break the apparent deadlock between NPS and CSX.

WESTERN BYPASS STATUS - Although the final report of the consulting firm engaged by the Maryland and Virginia highway departments to do the feasibility study for the proposed Washington bypass highway system is not scheduled to be completed until next fall, the consultant has reduced to two the number of potential river crossing points for the western route. These are in the Edwards Ferry area and the area east of Point of Rocks. The Environmental Committee is reviewing these alternatives to determine their possible impact on the canal, so the Association may comment to the highway administrations on the acceptability of specific sites.

NORTH BRANCH PRISON PROPOSAL - Cumberland, Allegany County, and Maryland development officials are urging the federal Bureau of Prisons to select a site at North Branch for a new medium security facility for 800 to 950 inmates. The site is adjacent to the canal just upstream from Lock 75. Although there would be a 150-foot buffer zone, the facility would be visible from Lock 75 and the canal boat replica area. The prison would consist of a group of one- and two-story buildings in a campus-like setting, inside a double-fenced compound. There would be an adjacent minimum security prison camp.

Local officials want the prison built because it would create 200-250 new permanent jobs. The National Park Service has indicated that it would be a visual intrusion and that a wider buffer between the prison and the park would be needed, but has not publicly opposed the proposal. The park service is waiting to review the draft environmental impact statement and other plans.

OLMSTEAD ISLAND BRIDGES - Public funds totaling \$400,000 have been appropriated toward the cost of restoring the bridges at Great Falls, with the remainder to be raised by private donations. Tax-deductible contributions may be sent to Great Falls Bridges Foundation, c/o Hon. William E. Hanna Jr., Montgomery County Council, 100 Maryland Avenue, Rockville, MD 20850.

POWER PLANT PROPOSED FOR BRUNSWICK

The following memorandum, dated November 29, 1988, was received from C & O Canal Superintendent Richard L. Stanton:

Subject: Proposed coal-fired power plant - Brunswick

On November 22 I met with Robert A. Colman, Project Director and Amy Clayton, Development Manager, with Applied Energy Services, Inc. in my office to listen to their proposal to construct a coal-fired power plant on CSX property which may be offered for sale in Brunswick. The property presently comprises part of the CSX railroad yards. They outlined their present activities and future proposals throughout the United States and furnished a document entitled "Ballenger Creek, Inc." which explains their current activities in greater detail. CSX was not represented at the meeting.

Allied Energy Services, Inc. needs water for the plant, perhaps as much as 2 1/2 million gallons a day at Brunswick. The Town cannot furnish the water. To make the project function they need to draw water from the Potomac across park property. It would be heated to about 90 degrees or less upon discharge. Ms. Clayton indicated, however, that the project may have air quality standards problems but she did not furnish me any details on this aspect of the project beyond that.

Briefly, I explained that the National Park Service normally does not grant easements for projects which will be looked upon unfavorably by local communities, particularly if environmental issues seem involved. For the record, I also explained that by granting an easement to draw river water from the Potomac across the canal, the service would enhance, significantly, the fair market value of the CSX land.

Based upon the information we have so far and also in view of the Town's apparent problem with the proposal from a Town development prospective I informed Ms. Clayton and Mr. Colman that the park would not support this proposal. A public meeting is scheduled for December 13, 1988 at the Brunswick Town Hall at which time Applied Energy Services will present the proposal to the public. I promise to represent the park at that meeting.

ADDENDUM TO ENVIRONMENTAL COMMITTEE REPORT.....

The December 22 issue of the Bethesda Gazette reports that Montgomery County officials wired CSX representatives \$10 million to seal the acquisition of the 6.4 mile portion of the rail line between Silver Spring and the District of Columbia boundary line on Friday, December 16, 1988. Funds were procured from unexpended balances in budgeted projects.

The next step for the County Council will be resolving the heated debate on the best way to utilize the land.

1988 had the V.I.P.'s doing a variety of jobs. We surveyed users of the park, monitored the noise levels from the proposed police firing range, cut overhang along the towpath, cleared two to three feet on each side of the towpath of branches and stumps that could cause problems for the mowers, picked up trash, removed vegetation from lock and aqueduct walls, cleaned picnic tables, participated with Montgomery County Volunteer Day, assisted with Concerts on the Canal, camouflaged social trails, purchased, cleaned or stained furniture for a lockhouse, and worked on the National Park's photograph files.

The following people volunteered 556½ hours:

Rochelle Arkin	Karen Gray	Cliff Murdock
Charles Ayres	Penni Greer*	Bejay Myers*
William Bauman	Austin Heyman	Charles Otstot
Lee Brown	Barbara Heyman	Ken Rollins
Jim Bryant*	Gil Hill*	Joan Paull*
Sally Bryant*	Rita Hirrlinger	Shirley Paull
Michele Carsrud	Harold Hubbell	Tom Perry
John Chandler	Bunny Johnson	Harry Raney
William Davies	Dave Johnson*	Bill Speck*
Lou Dobbs	Mary Ann Johnson	Al Stanley
Donna Donaldson	Alan Landay	Marilyn Stearns*
Gregory Donaldson*	Jane Larsen*	Russ Stearns*
Mimi Eller	Harold Larsen*	Bob Stevenson
Kurt Elsner	Margaret Lawrence	Louise Taylor
Chester Finch	Harry Lawson	Warren Vaneman
Everett Fuller	Peggy Lawson	James White
Gladys Fuller	Paul Marth	Pat White*
C.C. Gailes	Rita Marth	Edith Wilkerson
Buddy Gibson	Tom Merritt	

*contributed 9 or more hours

In addition, 6 boys and their adult leader from the Landon School came to the Great Falls Tavern on Montgomery County Volunteer Day and helped.

The Navy has placed Warren Vaneman on active duty out of Rhode Island. We will miss him on our work trips. He was our chief ladder and high place man. We wish him good health and good fortune.

See the Calendar of Events for our 1989 work trips. Call Joan Paull for details or questions at (301) 384-8584.

For those of you who are new to the Association, we meet anytime between 9 and 12 to do different jobs for the park. If you can, stay for the three hours; if not, come and stay as long as you can. We feel that this allows you to do activities with your family, to out in the evening, or whatever, without being exhausted. Plan to join us when you can!

In addition to Joan's report.....

During 1988 park volunteers Helen Johnston, Betty Bushell, and Betty Henson, all members of the C&O Canal Association, have consistently led 48 "Sights and Sounds of the Seasons" walks from Great Falls Tavern at the end of MacArthur Boulevard in Maryland. Over 400 hours of volunteer work have been contributed to this endeavor.

The walks provided information and inspiration to nearly 700 participants. Guests have come from abroad--Great Britain, Belgium, Australia, Germany--and from the states of Alaska, California, Wisconsin, Connecticut and Florida as well as nearby states.

Additional special walks have been arranged for Friends of the Tavern, Brian Williams and a TV crew photographing wildflowers, park service personnel from other parks, half-way home groups, school children and scouts.

Sights and Sounds of the Season walks are scheduled year round on the first and last Wednesdays and the first and last Saturdays of each month. The only thing that stops this endeavor is if the Park Service closes the road to the park for reasons of safety. The walks are scheduled to last 2 hours and commence with a slide show in the Tavern at 10 AM. They usually terminate by 12:30 PM.

SCHEDULE OF FULL-DISTANCE HIKE

- Saturday, April 15: Banquet at the Western Maryland Station Center in Cumberland, MD. Museum will be open for hikers. The Association is making arrangements for a block of rooms at the Holiday Inn.
- Sunday, April 16: After a sendoff by bagpipers, the hike will get underway. Cumberland to Spring Gap (11.1 miles). Camp at Spring Gap; dinner and breakfast in camp.
- Monday, April 17: Spring Gap to Town Creek hiker/biker (11.3 miles). Camp at Town Creek; dinner and breakfast in camp. Water
- Tuesday, April 18: Town Creek to Paw Paw campground (6.1 miles). Dinner and breakfast at the fire station in Paw Paw. A car shuttle will ferry hikers to meals. Water
- Wednesday, April 19: Paw Paw to Fifteenmile Creek (Little Orleans) (15.1 miles). Camp on rise or campground. Dinner and breakfast in camp. Water
- Thursday, April 20: Fifteenmile Creek to Hancock (16.8 miles). Camp on Tonoloway (NPS picnic area). Dinner and breakfast at Weaver's Restaurant. Water
- Friday, April 21: Hancock to Four Locks (15.5 miles). Camp behind the lockhouse. "Spaghetti Potomac" by Chef Dick Stanton and his sous-chefs. Spring water
- Saturday, April 22: Breakfast by Stanton & company. Four Locks to Williamsport (9 miles). Banquet and overnight in town (motel).
- Sunday, April 23: Breakfast on own in town. Hike Williamsport to Dam 4 (15.2 miles). Camp at Western Maryland Sportsmen's Club. Dinner and breakfast at the Sportsmen's Club.
- Monday, April 24: Dam 4 to Antietam Creek Ranger Station (15 miles). Camp at Ranger Station. Dinner and breakfast in camp. Water
- Tuesday, April 25: Antietam Creek Ranger Station to Brunswick (15.3 miles). Town campground. Dinner and breakfast in town (within walking distance). Water
- Wednesday, April 26: Brunswick to Monocacy Hill (above new boat ramp) (11.9 miles). Dinner and breakfast in camp. No water (some spring water in jugs will be available).
- Thursday, April 27: Monocacy Aqueduct to Sycamore Landing (15 miles). Camp at Isaac Walton League. Dinner and breakfast plans incomplete at press time.
- Friday, April 28: Sycamore Landing to Great Falls (13 miles). Sleep on Tavern porch, field engineer's House or yard on "Engineer's Hill." Water. Dinner optional at restaurants in Potomac, MD.
- Saturday, April 29: Great Falls to Tidelock (14.2 miles). Buses from Thompson's Boathouse Parking Lot 2 PM to 5 PM back to Great Falls. Banquet at Hogate's.

THROUGH HIKE PLANNING COMMITTEE TO MEET

The next meeting of the April 1989 Through Hike group is scheduled for March 19, 1989. Hike participants will be notified of time and place by mail. At this meeting, we will discuss equipment in detail and review logistical procedures.

-- Ken Rollins

LARSEN APPOINTS HILL TO COMMITTEE CHAIRMANSHIP

President Hal Larsen announced that, on November 16, James G. (Gil) Hill was appointed to replace Mimi Eller as chairman of the Permanent Membership Committee. Eller will remain a member of the committee.

NOTES FROM THE MINUTES OF THE DECEMBER 4, 1988, BOARD OF DIRECTORS MEETING.....

The December 4 meeting of the C & O Canal Association Board of Directors was held at the library in Williamsport. Board members and officers present were: Donna Boies, Bill Davies, Ralph Donnelly, Karen Gray, Mimi Eller, Alan Hedin, Sandra Hemingway, Dave Johnson, Hal Larsen, Earl McFarland, Bettyjane Myers, Ken Rollins, Bill Speck, and Edith Wilkerson. Those absent were: Buddy Gibson, Bob Greenberg, Susan Henley, Anne Korff, Al Stanley, Lyman Stucker, and Emmie Woodward. Some discussion and action items follow:

- Environmental Committee Report -- Dave Johnson reported on the status of the Georgetown Branch in Montgomery County and the District of Columbia, Brunswick industrial development proposal, North Branch prison proposal, and western bypass (all covered elsewhere in this issue). In addition, he reported that the National Park Service is prepared to sign a contract for refurbishment of the Heurich house at Pennyfield by a private developer who will then lease the property as a private residence; NPS has not yet located a suitable site for selling barge tickets at Lock 3 in Georgetown; the trial of the owner of property adjacent to the C & O Canal NHP accused of cutting trees in the park is scheduled for February; and Superintendent Stanton has approved the plan of Ft. Frederick State Park to build across NPS property to improve their boat concession.
- 1989 Budget -- Bill Speck presented the 1989 budget proposal (printed elsewhere in this issue). There was considerable discussion of a budget alternative proposed by Mimi Eller that would involve a more active membership recruitment program and a significantly larger budget. It was moved and passed unanimously that the board thank the Budget Committee for their proposed budget and approve the budget as presented with the provision that the budget be reviewed at each board meeting.
- Exchange of Membership List -- Carl Linden reported that the committee established to study this issue found the idea to exchange membership lists to be highly desirable. It was moved and passed unanimously to endorse the committee's recommendation (see article elsewhere in this issue).
- Membership Committee Chairmanship -- Hal Larsen announced that Mimi Eller had asked to be relieved as chair of the Membership Committee, but will remain a member of the committee. Gil Hill has agreed to be the chairman. It was moved and passed unanimously that the board express to Mimi Eller the appreciation of the board for her efforts.
- Program Committee Report -- Ken Rollins pointed out that a number of programs were not carried out last year and asked for suggestions. It was suggested that a firm deadline be provided for people to make known their interest in a given event.
- Membership Committee Report -- Mimi Eller reported that, as of December 2, the Association had 519 members. On December 5, 1987, the Association had 388 members, 44 of whom did not renew membership for 1988, an 11.3% dropout rate. Those with a previous tenure of more than two years were solicited three times for renewal, and it must be assumed that they are "no longer able to enjoy the park."
- Volunteer Programs -- Joan Paull's report summarized activities for 1988 and indicated that 61 people had volunteered 556 hours (see report elsewhere in this issue). Bill Davies noted that the archives inventory has proceeded up to the trustees' files, and that the entire inventory should be completed by the end of next summer.
- Nominations Committee Report -- Karen Gray presented the slate of candidates for officer and board of directors positions (see slate elsewhere in this issue).
- Volunteer Protection Act (HR 911/S929) -- Bill Davies recommended that Association members support this legislation as individuals.
- More on Western Bypass -- Bill Davies presented maps with marked routes at different distances from Washington as alternatives to the Western Bypass. It was argued that upgrading of roads along existing routes would be less expensive and less disruptive than construction of an entirely new super highway. This concept was referred to the Environmental Committee for consideration.



C&O CANAL ASSOCIATION, INC.
Report of the Budget Committee

13 November 1988

The Budget Committee, Judith Hecht, David Johnson, and William Speck, acting on the basis of previous budgets and experience and on a few submittals from officers and committee chairmen, offer the following budget for calendar year 1989:

INCOME

Memberships (c. 500).	\$ 6,300	
Dinners, bus fares, "happy hours" (3 events).		\$ 3,000
Sales (considering \$1,229 recently invested in T-shirts, and totes).		400
Miscellaneous (mostly interest, contributions).	400	
	<u>\$ 6,700</u>	

BUDGETED EXPENDITURES

Newsletters (recognizing larger distribution)	3,000	
Dinners, etc.		3,000
Sales (patches, T-shirts, totes).		as necessary
Administration.		
President (mostly letters).	\$ 300	
Secretary (minutes)	300	
Membership (returns, notices)	400	
Treasurer (bank charges, P O Box).	100	
Information officer	100	1,200
Committees		
Environment	100	
Level Walkers	50	
Nominations	50	
Membership promotion.	575	775
Douglas Archives preservation		250
Contributions/memberships (Am. Trails \$50, Pot. River Cons. \$200, Capital Cres. \$100 Am. Hikers \$25, + whatever voted)		400
Capital (long term) anticipated		
Stationery	175	
Brochures	900	1,075
		<u>\$ 6,700</u>

Income and expenditures for dinners and sales have been shown "off budget" because these are unpredictable and expected to be self-liquidating--income equalling expenditure over the long run. Budget items substantially conform to past experience and satisfy requests submitted, except the Membership Chairman's budget proposal to reach an 800-member goal. Mimi Eller proposes a budget of \$11,819 expenditure (including 12 festivals with food & lodging, purchase of mugs & caps to sell, etc.) more than offset by \$19,346 income from memberships and sales. The committee essentially offers about as much as was spent this year (less questionnaire), about the amount remaining after other items.

W. H. Speck
Chairman

LETTER TO THE EDITOR

'MAINTENANCE' OR 'VANDALISM'?
WHAT ALTERNATIVES?

The dredge sat on the canal bank, sucking up the sludge from the canal prism so that the sightseeing barge at the Tavern could operate for another year. Trucks dumped the sludge on the other side of the towpath, load after load. Successfully buried by the sludge was the harbinger of spring, just ready to bloom in mid-March. Also buried were spring beauties, colt's foot, field chickweed and a host of other wildflowers.

Repairing the culvert upstream from the Tavern likewise resulted in the dumping of sludge and rubble on canal and stream banks. Gone were the rare green dragon, the jack-in-the-pulpits, the squirrel corn, and the trout lilies, as well as the spring beauties, blue phlox and Dutchman's breeches.

The quick application of coarse grass seed resulted in cosmetic improvement as the blackened areas turned pale green. Gone was the multi-colored carpet of wild flowers.

A few wild flowers managed to struggle through during the summer and fall. They didn't know they didn't have a chance. In the winter came a steam roller and many truckloads of coarse sandy material to add several inches' height to the towpath surface and successfully erase any trace of wildflowers on either side. Nor did workmen take any heed for the tree trunks they gouged as they maneuvered their machines up and down the towpath.

The rare twayblade growing near the Tavern was successfully buried along with the surrounding poison ivy. The ivy is plentiful. The twayblade is almost impossible to find elsewhere.

If nothing else disturbs the natural landscape, mowing machines ply their way up and down the towpath during the summer. Their blades reach as far as possible on both edges of the path as they mow on a schedule especially timed to destroy wild flowers just as they are ready to bloom. Columbine, ironweed, chickweed, tickseed sunflowers, and a host of other wild flowers survive only if they are beyond the reach of the mower blade. The black-eyed susan, Maryland's state flower, has completely disappeared.

In line with the Park's objective of stabilizing and preserving old structures, volunteers are enlisted to carefully dig

out Kenilworth ivy, grape ferns, and other wild things growing on lock walls. Energetically they root out senna, crested wood fern and other native ferns, wild asters, and other native flora from canal banks and prisms. Again seeding with coarse grass provides cosmetic improvement. It doesn't restore the old variety and color.

Now there is again talk of contracting out maintenance work throughout the national park system. Contracting companies would be expected to have even less concern for natural growth in the parks. Concerned observers would continue to find out what has happened only after the damage was done--and the damage could be expected to be greater than at present.

Is there an alternative? Is it possible for the Park Service to take a leaf from Lady Bird Johnson's work with the highway department in Texas? A spring tour along some of the Texas highways now provides a never-ending kaleidoscope of color. The highway department is seeding highway banks to wildflowers and changing their mowing schedule to allow the flowers to set and distribute their seeds. An active educational program helps to protect plants during their brown seeding period when many motorists may consider them unsightly.

Lady Bird Johnson or some of her cohorts might be willing to help the Park Service just as she helped the Texas Highway Department discover and preserve the beauty of native plants in Texas. Near at hand, the C&O Canal Association may have trained naturalists who could be helpful. Other local organizations such as the Audubon Naturalist Society and the Potomac Chapter of the Sierra Club might be willing to devote time and effort to restoring and maintaining the Potomac Valley's natural heritage.

Increasingly we are immersed in a man-made world. Preservation rather than destruction of our diminishing wild heritage should be our major objective wherever a small slice of wildness still exists.

--Helen Louise Johnston

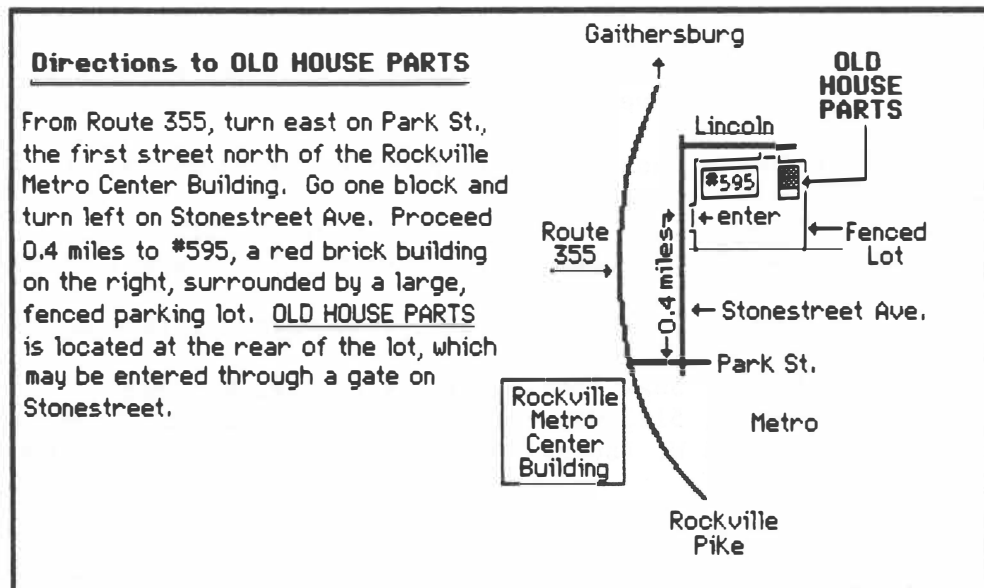
(Ed. note: Has the Association's Environmental Committee looked into this?)

Do you know about "Old House Parts" ?

Old House Parts is a nonprofit architectural salvage depot which was opened in 1985 with the assistance of a grant from the Montgomery County Council. Administered by Montgomery Preservation, Inc., a private, nonprofit countywide preservation organization, Old House Parts was established to encourage the recycling of architectural artifacts from demolished older buildings.

The depot provides a low-cost source of materials for reuse in the renovation and restoration of pre-1940 vintage Montgomery County houses. It offers a wide selection of parts from 19th and early 20th century buildings, including doors, mantels, moldings, shutters, banisters, and porch brackets.



Open every Saturday from 10 a.m. until 2 p.m., Old House Parts is located just off Route 355 in Rockville.



For additional information, to volunteer assistance, or to donate tax-deductible artifacts, call Lois Snyderman at 654-6423.

CALENDAR OF EVENTS

- Wednesday, January 25 - Sights and Sounds nature walk, Great Falls, MD; call 301-443-0024 for information.
- Saturday, January 28 - Sights and Sounds nature walk, Great Falls, MD; see above.
- Saturday, January 28 - Worktrip at Riley's Lockhouse 9 AM - 12 Noon; see p.12 for details.
- Wednesday, February 1 - Sights and Sounds nature walk, Great Falls MD; see above.
- Saturday, February 4 - Sights and Sounds nature walk, Great Falls, MD; see above.
- Saturday, February 4 - Level Walker hike, Harper's Ferry - Weverton, 10 AM; call Karen Gray 202/333-6947 for further information.
- Sunday, February 5 - C&O Canal Association Board of Directors meeting; call 703-356-1809 for further information.
- Saturday, February 11 - Worktrip at Great Falls Tavern 9 AM - 12 Noon; see p.12 for details.
- Wednesday, February 22 - Sights and Sounds nature walk, Great Falls, MD; see above.
- Saturday, February 25 - Sights and Sounds nature walk, Great Falls, MD; see above.
- Wednesday, March 1 - Sights and Sounds nature walk, Great Falls, MD; see above.
- Saturday, March 4 - Sights and Sounds nature walk, Great Falls, MD; see above.
- Saturday, March 4 - Association Annual Meeting, Harpers Ferry, WV; details p. 1.
- Saturday, March 11 - C&O Canal NHP Commission meeting, Brunswick, MD; call Park Headquarters for exact location and time - 301-739-4200.
- Sunday, March 19 - Through Hike Planning Committee meeting; call Hal Larsen for place and time - 703-356-1809.
- Saturday, March 25 - Sights and Sounds nature walk, Great Falls, MD; see above.
- Wednesday, March 29 - Sights and Sounds nature walk, Great Falls, MD; see above.
- Saturday, April 1 - Sights and Sounds nature walk, Great Falls, MD; see above.
- Wednesday, April 5 - Sights and Sounds nature walk, Great Falls, MD; see above.
- April 15 - April 29 - 35th Annual Justice Douglas Reunion Hike - Cumberland to Georgetown; Details elsewhere in this issue. Registration deadline March 10, 1989.



ALONG THE TOWPATH is published in January, April, July and October by the C&O Canal Association, P O Box 366, Glen Echo, MD 20812-0366.

Editor is Nancy Long who welcomes communications from the membership. Address her at 6001 Bryn Mawr Avenue, Glen Echo, MD 20812. Associate Editor is Ellen N. Holway.

Production and distribution assistance is provided by Susan "Butch" Henley. 1988-89 Association officers are:

President: Harold A Larsen, 1314 Kurtz Road, McLean, VA 22101

First Vice President: William E Davies, 125 Greenway Blvd. West, Falls Church, VA 22046

2d VP & Level Walker Chairman: Albert Stanley, 9935 Cottrell Terrace, Silver Spring, MD 20903

Secretary: Alan E Hedin, 47 Shaw Avenue, Silver Spring, MD 20904

Treasurer: William H Speck, 5123 Westridge Road, Bethesda, MD 20816

Information Officer: Joseph W. (Buddy) Gibson IV, P O Box 716, Washington Grove, MD 20880

Board of Directors: *Terms expire in 1991:* Donna Boies, Ralph Donnelly, Sandra Hemingway; David Johnson, Lyman Stucker; *Terms expire in 1990:* Wilhelmina (Mimi) Eller, Susan "Butch" Henley, Earl McFarland, Jr., Kenneth S. Rollins, Edith C. Wilkerson; *Terms expire in 1989:* Karen M. Gray, Robert Greenberg, Anne Murphy Korff, Bettyjane F. Myers, Emmie Woodward.

Association dues - One Calendar year: \$10; Family, \$15; Patron, \$20. Membership includes subscription to ALONG THE TOWPATH.

Amount

II. ACCOMMODATIONS - I will need:

☐ Motel in Cumberland - Saturday, April 15 @ \$49.00 double room

☐ I will share a room with _____

☐ Please assign a roommate

☐ Motel in Williamsport Saturday, April 22 @ \$35.70 double room

☐ I will share a room with _____

☐ Please assign a roommate

☐ I am arranging my own motel accommodations each evening.

☐ I will need to join shuttle services with others who will be using motels each evening

☐ I would like overnight accommodations at the end of the hike if offered by area members:

☐ Friday, April 28

☐ Saturday, April 29

☐ I can offer overnight accommodations at end of hike

☐ Friday, April 28

☐ Saturday, April 29

☐ I can offer transportation to and from Hogate's on Saturday, April 29

III. MEALS (For those who will not be camping or who will participate on a selective basis)

☐ All meals with through hiking group in camp and in town, including banquets @ \$149.50

☐ Meals with group excluding banquets @ \$103.50

BANQUETS ONLY:

☐ All three \$46.00

☐ Cumberland @ \$16.00

☐ Williamsport @ \$10.00

☐ Final (Hogate's) @ \$20.00

☐ I have the following dietary restrictions:

☐ I will be self sustaining for all my meals.

IV. TRANSPORTATION

☐ Bus from Washington area (Great Falls) to Cumberland, Saturday, April 15 @ \$11.00

☐ Bus from Tide-Lock (Thompson's Boat Center) to Great Fall, Saturday, April 29 @ \$2.00

V. SUMMARY

☐ Total amount for items checked

☐ Less advance registration fee @ \$50.00 (Required for a week or more, subject to refund up to March 10, 1989)

☐ Balance due by April 1, 1989

REGISTRATION CLOSES MARCH 10, 1989

MEMBERSHIP MEMO

C&O Canal Association memberships have a common expiration date of December 31 each year. New members who join during the period September - December are credited with membership for the coming year.

Below is a membership renewal form. Please renew promptly, thereby helping the Association maintain its program of advocacy and care of the C&O Canal National Historical Park.

C & O Canal Association

MEMBERSHIP APPLICATION

I am enclosing dues for membership in the C & O Canal Association for the calendar year 1989. My dues are for ☐ renewal membership ☐ new membership, and I wish to be enrolled in the membership category indicated below:

MEMBERSHIP CATEGORIES:	<input type="checkbox"/> Individual	\$10	Membership includes a subscription to the quarterly <u>Along the Towpath</u> . New members are entitled to a badge.
	<input type="checkbox"/> Family	\$15	
	<input type="checkbox"/> Patron	\$20	

NAME _____ Telephone number () _____
(for inclusion in Membership Dir.)

ADDRESS _____
street city
state zip code

My free C & O Canal Association badge should bear this name: _____

My second badge (if Family or Patron member): _____

☐ I do not wish to have my name included when the Association list is exchanged with another organization.

Please send me _____ cloth patches at \$1.50 each. Total amount enclosed \$ _____

Make check payable to the C & O Canal Association, and mail to the Association at P O Box 366, Glen Echo, Maryland 20812-0366.

RESERVATION FORM FOR ANNUAL MEETING DINNER
TO BE HELD AT THE METHODIST CHURCH
HARPERS FERRY, WV, March 4, 1988

Please reserve _____ dinners at \$9.00 each. Total enclosed \$ _____

Make checks payable to the C&O Canal Association and mail by February 22 to the Association at P O Box 366, Glen Echo, MD 20812-0366. Reservations will not be acknowledged; a list of reservations will be maintained at the door.

Name(s) _____

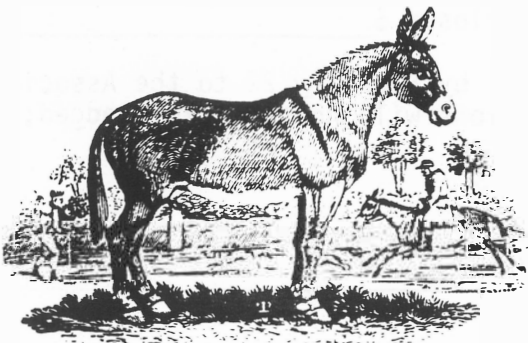
Address _____

Telephone () _____

C & O Canal Association
P. O. Box 366
Glen Echo, Maryland 20812-0366

Non-Profit Org
U.S. POSTAGE PAID
Glen Echo, MD
PERMIT No. 102

DATED MATERIAL - PLEASE EXPEDITE



1 The Mule

P
WILLIAM E. DAVIES
125 W. GREENWAY BLVD.
FALLS CHURCH, VA 22046