



C & O Canal Association

ALONG THE TOWPATH

concerned with the conservation of the natural and historical environment of the C&O Canal and the Potomac River Basin

VOLUME XXIV

March 1992

NUMBER 1

ANNUAL DOUGLAS REUNION HIKE WILL BE ON APRIL 25 AT HANCOCK

The C & O Canal Association's 1992 Justice Douglas Reunion Hike will be held on April 25th, and will cover the 12.5 miles of the towpath between McCoys Ferry and Hancock. The hike will be followed by dinner at the Hancock American Legion. This will be the 38th renewal of the Association's traditional commemoration of Justice Douglas' 1954 walk down the towpath to draw attention to the effort to preserve the canal rather than convert it into a highway.

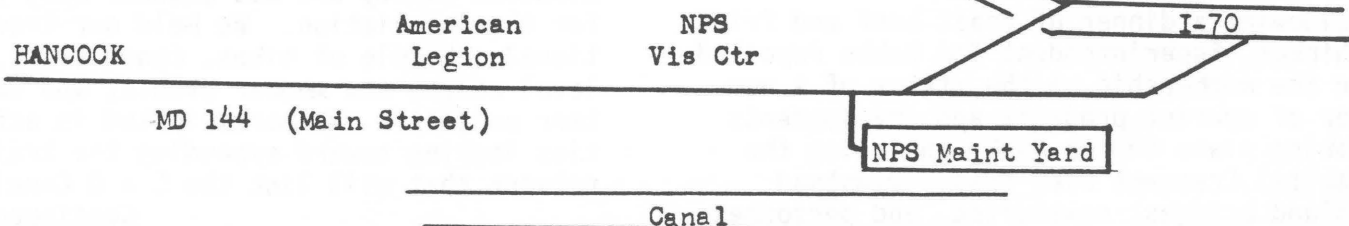
We will meet at the Park Service maintenance yard in Hancock. Buses will be provided to take us to McCoys Ferry, and the hike will return upstream. The buses will depart at 10:30 a.m., and the hike will officially start upon arrival at McCoys Ferry. A fare of \$2 will be collected on the bus. Hikers should bring their lunches and drinks to eat during the hike.

Hikers will pass historic Fort Frederick, built during the French and Indian War and garrisoned during the American Revolution and Civil War; Big Pool; the Western Maryland Railway (now CSX) bridge to Cherry Run, WV; Licking Creek Aqueduct; the abandoned village of Millstone, once a stagecoach stop on the National Road; Little Pool; Locks 51 and 52, and Tono-loway Creek Aqueduct.



Lock 52 in Hancock during the canal era

As usual, advance reservations will be required for the dinner at 6:00 p.m. The American Legion is on East Main St., a short distance from the canal and the new Park Service Visitor Center. Happy Hour, with a cash bar, will be at the Legion Hall prior to the dinner. The cost of the dinner will be \$8 per person. A reservation form can be found on the last page of this newsletter. Dinner reservations must be received at the Association's mail box by April 18.



The entrance to the maintenance yard is almost directly across MD Rte 144 from Interstate 70 exit. Additional parking will be available at the Visitor Center.

ANNUAL MEETING, ELECTION AND PRESIDENT'S REPORT

Annual meeting day, February 29th, blew in on the front of another Alberta Clipper that sent the temperature plunging. The fifty or so early arrivals to Williamsport who accompanied Rangers John Frye and Susan Fauntleroy (both members of the Association) and maintenance director Sam May for a walk from the Cushwa warehouse to Lock 44, braved a windchill that seemed near zero. During the walk we were able to inspect the progress on the excavation of the Cushwa Basin and the rewatering project for the canal.

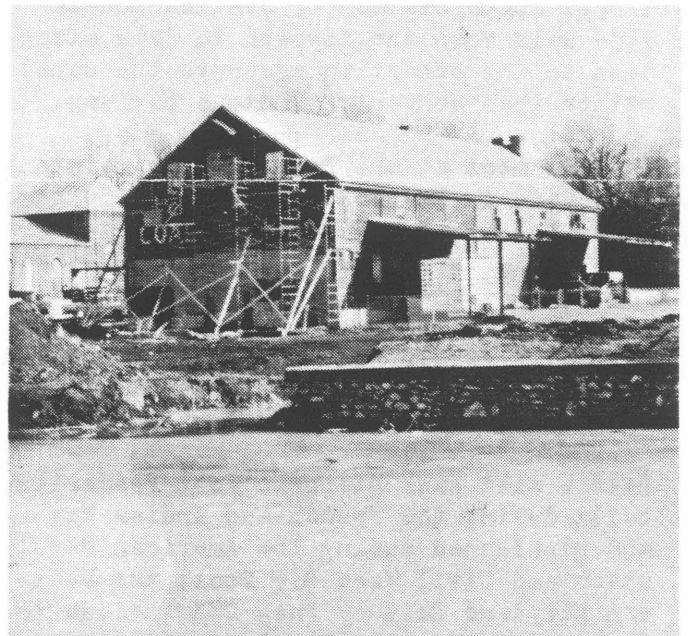
The annual membership meeting was held at the Williamsport Volunteer Fire Company hall, with over 100 members in attendance. Following reports from officers, committee chairs, and program coordinators, the Association elected officers for the coming year. Re-elected to the executive committee were President Dave Johnson, Vice-president Hal Larsen, 2nd V.P. and Level Walker Chair Karen Gray, and Treasurer Bill Evans. Norma Hendrickson was elected Secretary replacing Helen Shaw, who changed hats and moved to the Information Officer position.

Orrin Long and Jim Millar were re-elected to three year terms on the Board of Directors. In addition, four new directors were elected: John Fondersmith, Sharon Freedman, Doug Mussen, and Jack Stickles. They replace retiring members Donna Boies, Judy Hecht, Arthur Korff, and Victor Conrad.

(Continuing board members, whose terms were not up this year are Rita Bauman, Tom Conlon, Nancy Long, Ken Rollins, Ralph Donnelly, John Frye, Carl Linden, Linda Perry, and Lyman Stucker.)

Following a dinner of roast beef and fried chicken, Superintendent Tom Hobbs reported to the membership on the status of a number of current projects and developments taking place in the Park, including the Capital Crescent bike trail, Olmstead Island bridges, rewatering, and personnel

changes. The new Assistant Superintendent, Terrie Savering, and Chief Ranger, Keith Whisenant, were introduced. Also after dinner, the president presented shoes worn by the Park's mules to members whose efforts during the past year were responsible for the success of the Association's programs and activities. Those recognized were Rita Bauman, Don Besom, Jim Bryant, Sally Bryant, John Chandler, Bill Evans, John Fondersmith, Jack Francis, John Frye, Karen Gray, Ellen Holway, Hal Larsen, Jane Larsen, Carl Linden, John Lindt, Bettyjane Myers, Joan Paull, Linda Perry, Ken Rollins, Helen Shaw, Bill Speck, Russ Stearns, Pat White, and James White.



Cushwa Warehouse restoration

PRESIDENT'S REPORT

Nineteen ninety-one was another busy year for the Association. We held our traditional schedule of hikes, canoe trips, level walks, new member events, and volunteer projects. We participated in activities looking toward expanding the trails network that will link the C & O Canal

Continued....

(PRESIDENT'S REPORT continued...)

towpath to other trails in the region, and we were represented at several major conferences, including the Appalachian Trail Conference in Massachusetts, the 3rd National Rails-to-Trails Conference in Baltimore, and the 2nd International Conference on Historic Canals, in Akron, Ohio.

Our membership has continued to grow, although the net increase in 1991 was less dramatic than in the years immediately preceding. This growth has not only meant that the Association and the Park are attracting more public interest; it has enabled us to cope with inflation, increase our budget, expand our activities, and still maintain our current dues structure without a change since 1986.

The success of our activities is the result of the planning and organization by the members who volunteer their time and energy to make things happen. The Association has no paid staff; everything is done by members donating time and effort.

- o John Fondersmith coordinated the Association's support for the MS walk on the towpath in April and headed the committee that made arrangements for the Douglas Hike last spring.

- o Jack Francis chaired the Heritage Hike in the fall.

- o Sonny DeForge and George Camplair organized a family bike trip in the spring.

- o Ken Rollins and Carl Linden ran the annual Paw Paw Bends overnight canoe trip in the fall.

- o Karen Gray scheduled a year-round program of informal level-walker hikes on Saturday mornings, and has done an outstanding job of revitalizing the level walker program.

- o Rita Bauman arranged a series of events to interest new members, including walks, our annual excursion on the Canal Clipper, and a talk on canal history by Dave Gardner. Rita also managed our par-

ticipation in numerous summer festivals in communities up and down the valley.

- o All of these activities were coordinated by the Programs Committee under the management of Ken Rollins.

- o Our Volunteer-in-Parks program continued to work on monthly projects in the Palisades District under the dynamic leadership of Joan Paull. Neither rain nor cold nor summer heat kept Joan's regulars from a wide variety of tasks throughout the year. Elsewhere, members of the Association volunteered many additional hours of work in the park as individuals or as part of other groups.

Behind the scenes, a number of members have worked very hard to keep the Association's administrative machinery running smoothly.

- o Without Ellen Holway to keep track of all of our active member records, their dues payments and address changes, we would surely grind to a halt. We would not receive our membership cards, new members wouldn't get their name badges and other materials; in fact, no one would even get their newsletter, because Ellen not only keeps all of the membership records, but also updates the data for Butch Henley's computer to produce the mailing labels.

- o For the newsletter, we are greatly indebted to Don Besom, our editor for the past two years, who introduced desktop publishing to our quarterly, Along the Towpath, giving it a whole new, professional look.

- o Helen Shaw, our secretary, has very ably kept the minutes of board meetings.

- o Vice-president Hal Larsen has willingly worn many hats, serving on committees and representing the Association at outside meetings and workshops.

- o Financially, in 1991 we again generated a surplus of revenue over expenses, thanks to the stewardship of our

Continued....

(PRESIDENT'S REPORT continued...)

treasurer, Bill Evans, the planning of our Budget Committee, and the frugal management of all of our officers, committee chairs, and program coordinators charged with the responsibility of executing the budget.

In addition to our membership events, and our representation at the conferences mentioned earlier, the Association participated in several activities concerned with planning on a wider scale than just the C & O Canal.

o We continued our involvement with the Coalition for the Capital Crescent Trail. The National Park Service is moving forward in the development of its portion of the trail, parallel to the canal in D.C. Unfortunately, the fiscal problems in Montgomery County and the state have put progress on the Maryland section of the trail on an indefinite hold. Coalition volunteers are struggling to keep the trail open for hikers, but county development of the dual-purpose hiker-biker trail may be years away.

o Upstream, we have maintained an interest in the development of plans by the Maryland Department of Natural Resources for a bicycle trail on the abandoned Western Maryland Railway line between Fort Frederick and Hancock, in conjunction with the formulation of a development concept plan by the Park Service for the canal in the Hancock area.

o The Association took part in workshops sponsored by the Park Service and National Parks and Conservation Association for a Middle-Atlantic Regional Trails System, the pilot program for an eventual national trails plan. As a result of these workshops, a draft report is in preparation to identify potential trail and greenway corridors that could contribute to the development of a trail network throughout Maryland, Virginia, West Virginia, Pennsylvania, Delaware, and New Jersey. The report is intended to partially fulfill the requirements established in the National Trail System Act (P.L. 90-5430).

o We are also participating in the Potomac River Greenways Coalition, a broadly-based coalition of federal, state, and local government agencies and private and non-profit organizations established to preserve and enhance the entire Potomac River and its environs as a greenway system.

In the fall of 1990, representatives of a number of organizations in the Potomac region met to discuss their concerns about the impacts of growth on the significant resources of the river and its adjacent lands, and began to explore the potential for linking and protecting the natural, recreational, scenic and cultural resources of the river through a network of public and private greenways. In subsequent meetings, the group drafted a mission statement, and began to develop ideas for building a partnership of public and private organizations.

In September 1991, a series of workshops was conducted to introduce more people and groups to the coalition concept and to begin exchanging ideas on major Potomac resources, key issues, opportunities and possible goals and actions. The greenway concept envisioned is a system of connected natural areas for scenic, wildlife habitat, water quality and cultural heritage conservation. Once again, the C & O Canal occupies a strategic position in this potential enhancement of the entire valley.

o Finally, we participated in the planning of the route for the American Discovery Trail (ADT), a project of the American Hiking Society (AHS). This will be a coast-to-coast hiking route, utilizing existing parks, trails, and public lands wherever possible. It will follow the towpath from Oldtown to Georgetown, making the C & O Canal, as the western entry into the nation's capital, an integral link in this cross-country trail. Legislation has been introduced in Congress by Rep. Beverly Byron to have the Park Service study the feasibility of having the ADT designated a National Scenic Trail.

Continued....

(PRESIDENT'S REPORT continued...)

AHS has declared next September 12 as American Discovery Trail-Blazer Day, with the objective of having people on every mile of the route from the Atlantic to the Pacific Ocean. This will be a good opportunity for Association members to show their support for the trail concept, and for the importance of the role the canal will play in it.

The past year was not without sadness for the Association, as we lost two old friends. Jack Durham was one of the founders of this organization--indeed, Ken Rollins calls him "The father of the C & O Canal Association"; and Colin Ritter wrote "Justice Douglas wrote the script and set the scene, but it was you, Jack Durham, who put it all together." He was the organizer and coordinator of the 1954 Douglas-Washington Post Hike, and of the early reunion hikes, and was a leader of the Association throughout the years of the struggle to create the park.

The sudden and tragic passing of Mike Mastrangelo was also a great loss to his friends in the Association, as it was to the Park. We will miss them both.

On the happier side, we congratulated J. D. Young on his promotion to superintendent of Catoctin Mountain National Park, and we wished Lee Struble much happiness in her retirement. We welcomed Terrie Savering as Assistant Superintendent and Keith Whisenant as Chief Ranger.

What lies ahead for 1992?

We look forward to another successful series of activities, to continued growth of the Association, and to greater participation in our events and volunteer projects. I am very pleased with the rate that membership renewals have come in so far this year. We are far ahead of previous years in the number of renewals received as of the end of February, having already achieved two-thirds of our budget for the year. While this does not necessarily project another surge in new memberships, or even a reduction in non-renewals, it does help the Board to make

major fiscal decisions, knowing that the resources are available.

In the Park, we await the reopening of the Olmstead bridges and the overlook at Great Falls, twenty years after Agnes, and anticipate the rewatering of sections of the canal in Williamsport and Hancock.

Our enhanced financial position has enabled the Board to increase the amount budgeted to support special projects in the Park. In 1991, we contributed \$1,000 to support research on historic costumes for the boat crews. We are currently awaiting proposals for 1992 projects.

But the upcoming event that excites me the most is the 1992 International Conference on Historic Canals, which we and the Park will co-host next October at Harpers Ferry. We are currently working with the superintendent and his staff to plan this major gathering of canal societies and park professionals. We feel that it is a high honor that the C & O Canal has been chosen by our counterpart organizations from throughout the eastern United States and Canada to be the site for this conference, and that it will be a great challenge and opportunity to show off what we think is the finest example of an historic canal park anywhere.

--Dave Johnson

BOARD OF DIRECTORS MEETINGS NOTES

**December 1, 1991;
Glen Echo Town Hall:**

1. John Chandler reported on the proposal by a private firm to build a recycling facility at Point of Rocks. The site, on route 28 near the Old Main Line crossing, is about 1/4-mile from the canal, although separated from it by road, other commercial property, woods, and railroad. The applicants have indicated that they will process only industrial and construction material, removing 20 - 30% as recyclable and sending the remainder to landfills. They have stated that no hazardous material will be accepted, that all

Continued....

(BOARD MEETING NOTES continued...)

material will be contained on concrete slabs, recyclable material will be stored in covered containers until shipped, and that in case of a flood alert, all material will be removed from the site within two hours. Because a portion of the property is within the 100-year floodplain, a permit to alter the site by construction must be obtained from the Maryland Department of Natural Resources (DNR).

A hearing was held on November 19 by the DNR's Water Resources Administration. A local ad-hoc organization, "Halt Imported Trash", raised questions concerning procedures that would be used to prevent runoff and contamination. The Association, represented by Dave Johnson, presented a statement indicating our concern of potential water, air, and noise pollution affecting the park. Opposition was also introduced by the Issac Walton League. The Board deferred taking an official position on the proposed facility until additional information showing adverse impact is developed.

2. The Board approved the Budget Committee's report and adopted a \$12,300 administrative operating budget for 1992. During review of the budget, the Board agreed as a matter of policy that the Association would not publish a new membership directory.

3. The Board approved the Association co-hosting the 1992 International Conference on Historic Canals, together with the C & O Canal NHP.

**February 2, 1992;
Williamsport Library:**

1. It was reported that no decision has been forthcoming from the Water Resources Administration on the Point of Rocks recycling facility since the hearing on November 19. In addition to that permit, the company must receive an operating permit from the MDE. The Frederick County commissioners have subsequently imposed a moratorium on all new waste facilities pending review and rewriting of the county's solid waste management plan. The MDE

permit will not be issued until the county recommends approval, and that will not likely occur until the new waste management plan is implemented. In addition, the county has enacted a zoning regulation change requiring a minimum of ten acres for such a facility. The Point of Rocks site is only about three acres.

2. The Board increased the 1992 budget, authorizing \$200 for acquisition of a suitable storage cabinet for the William O. Douglas Collection in the Western Maryland room of the Washington County Free Library in Hagerstown.

3. The Board noted a proposed rezoning request in Potomac which, if approved, would allow a townhouse development opposite the entrance to Great Falls. Because the site is over a mile from the canal, more information is required to determine if there would be any impact on the canal.

4. A committee was appointed to study a suggestion made by Board-member Jim Millar that the Association create additional membership categories, and to explore the feasibility of seeking commercial benefits for membership, and for accepting advertising in the newsletter. The committee members are Rita Bauman, Tom Conlon, Carl Linden, Jim Millar, and Linda Perry. A second suggestion, for a level walker relay, was referred to the Level Walker Chair for consideration.

**NOTES FROM THE SUPERINTENDENT'S
OFFICE --- February 10, 1992**

There isn't a great deal of project movement to report during the last two months. This is the annual cyclic period of adjusting the organizational needs, inventory, budgeting, lining up supplies and materials for launching into the new season. This is a busy time in the administrative area; however, some projects are moving.

Restoration and rewatering projects are dormant at this point but we fully expect to be moving them along next month. The
Continued....

(SUPERINTENDENT'S NOTES continued...)

Brunswick rewatering is being addressed by a soil analysis by the CSX railroad and the Maryland Department of the Environment. We should have some word within a month or two.

The Olmstead Bridges project is still moving along as we enjoy favorable weather. Boardwalk building is proceeding slowly and the contractor is working on their punch list to complete the bridge work. We still anticipate meeting our target date of April 23rd for completion.

The Hancock Development Concept Plan is in the developmental phase for producing a document to proceed with the public meeting next month. No date established.

The Capital Crescent Trail is still in the design stage with completion date for this now targeted for the end of March.

Cursory study of the Georgetown house has been completed. There are few dollars available but we anticipate completing necessary cosmetic work to open the ticket sales portion of the basement and entry way for opening with the boat season this spring.

Ms. Susan Frye, formerly of Harpers Ferry NHP, has been selected to fill the new Cultural Resources Management position in the Park.

--Thomas O. Hobbs

COMMISSION MEETING NOTES

At the December meeting of the C & O Canal Commission, Superintendent Hobbs reported that rewatering at Williamsport and Hancock is well under way. The archeological work is completed and things are going very well. At the Cushwa turning basin in Williamsport, part of the wall that has been uncovered is a stunning piece of brickwork, rather than stone. The Brunswick rewatering is a different story. A thorough soil survey from Lock 30 toward the campground area in September discovered three places that indicated there are petroleum contaminants in the soil, in

some places below the lining. Work on the project was halted pending meetings with the DNR and CSX to further explore how to approach the situation. NPS soil

scientists feel confident that desilting will remove any oil buildup in the first layer of silt. They need to know how much may be below the clay liner and how to mitigate that. The most sensitive piece to all of this is the Brunswick water supply.

The commission also heard a presentation by Debbie Feldman, of the National Park Service, on the Hancock Development Concept Plan, and Mark Spencer of the DNR, who has been working on a plan for the Western Maryland rail-trail conversion between Fort Frederick and Hancock. The most controversial area for both plans has been whether to close Canal Street in Hancock to traffic. Another option would be to close the DNR property (railroad right of way) through town and leave Canal Street open. The Park Service, DNR, and advisory committees in the town are working to agree on a joint concept plan to tie the two units together. Several of the members of the canal commission urged that additional emphasis be given to the historical aspect of the rewatered canal, because most of the presentation appeared to deal with recreation rather than interpretation.

DICK STANTON APPOINTED TO INTERSTATE COMMISSION ON THE POTOMAC RIVER BASIN

Richard L. Stanton, who retired as superintendent of the C & O Canal National Historical Park in 1989, has been appointed as the commissioner from Maryland to the Interstate Commission on the Potomac River Basin. Subsequent to his retirement from the Park Service, Dick served as a member of the Association's Board of Directors and chaired the Environmental Committee. He resigned from those positions last year due to knee surgery.

ICPRB commissioners represent the basin states that are signatories to the inter
Continued....

(STANTON APPOINTMENT continued...)

state compact that formed the Commission in 1940. Each state appoints three commissioners. The federal government, a sponsor of but not a signatory to the compact, also appoints three commissioners. Other Association members currently serving on the Commission are Adam Foster, representing the District of Columbia, and Minny Pohlmann, an alternate from Maryland.

ICPRB's mission was expanded in 1970 to include all water and related land resources in the basin, as well as water quality.

1992 INTERNATIONAL CONFERENCE ON HISTORIC CANALS

The fifth annual Conference on Historic Canals will be held October 19-21, 1992 at the Cliffside Inn in Harpers Ferry, West Virginia, under the sponsorship of the C & O Canal National Historical Park and the C & O Canal Association. The meeting is expected to bring together representatives of canal societies and of local, state, and national park and natural resources agencies from throughout the United States and Canada, and possibly the United Kingdom. The three-day conference will feature speakers and panel discussions during the morning sessions and afternoon field trips into all three Park districts.

The first conference was held at Morris, Illinois on the Illinois & Michigan Canal National Heritage Corridor in 1988, and was followed by the Easton, PA meeting hosted by the Hugh Moore Park (Lehigh and Delaware Canals). The series became international in 1990 when it was hosted by the Canadian Park Service's Rideau Canal at Chaffey's Lock, Ontario. The most recent conference was held last fall in Akron, Ohio (Ohio & Erie Canal - Cuyahoga Valley National Recreation Area).

A steering committee of Gordon Gay, Chief of Interpretation and Visitor Services for the park; John Frye, who is both a ranger in the park and a director of the Associa-

tion; Hal Larsen, vice-president, and Dave Johnson, president of the Association, have begun planning for the conference, working with Superintendent Tom Hobbs. Additional working groups and subcommittees for specific aspects of the planning will be established, and members interested in serving are invited to apply.

NATURE NOTES

The mallards have cavorted all winter on canal and river. Their breeding season madness only increases as January progresses to February, then March. Overhead, a pair of hawks (red-tailed?) call harshly, perch briefly side by side in a tall tree, and then take off into the distance. Carolina wrens sing lustily. We listen for the phoebe, heard one year as early as February 28 near Great Falls Tavern. Flocks of robins have been reported. The Canada geese continue more or less aimless flying to and fro as they have all winter.

Catkins dangle from the alders. Silver maple buds have already burst into red flower. Late winter rains enhance the green beds of moss with their miniature forest of spore stalks. Arbutus buds are ready to unfold. The swamps are full of skunk cabbage blossoms, some dating from December. Soon the harbinger-of-spring will show its tiny white blossoms.

Chilly winds and grey skies cannot hide the fact that spring is just around the proverbial corner. All-day drizzles are welcome in the woods where they moisten dry leaf and flower buds and help restore rivulets meandering toward the river. Soon spring peepers will start "singing" wherever small pools form. Almost any day we will see the mourning cloak, the earliest butterfly, sometimes seen even before snow has melted.

--Helen L. Johnston

DON'T MISS:

CHESAPEAKE AND OHIO CANAL

Official National Park Handbook 142

A Guide to the Chesapeake and Ohio Canal

THROUGH THE LAST LOCK

Harvey A. Brant,
Lockkeeper

One of the last surviving lock tenders on the C & O Canal, Harvey A. Brant died in Frederick on February 24 at the age of 98. Mr. Brant was the lockkeeper at lock 44 in Williamsport from 1916 until the canal ceased operations in 1924. He continued to live in the lock house for many years and worked for the Byron Tannery. He was well-known for his stories about life on the canal and enjoyed telling them to visitors. Many of his tales are included in Elizabeth Kytte's Home On The Canal. Mr. Brant was buried in Riverview Cemetery, just a block from Lock 44.

Anthony Wayne Smith,
Association Founder

One of the founders of the C & O Canal Association, Anthony Wayne Smith, 86, died in Georgetown on February 29. In 1954 he participated in the Justice Douglas-Washington Post Hike and was a member of the original C & O Canal Committee formed at the end of the hike to prepare recommendations for the preservation and use of the canal. That committee evolved into the C & O Canal Association. Mr. Smith remained active in the Association for many years.

At the time of the 1954 hike, Mr. Smith was a member of the executive committee of the National Parks and Conservation Association. He was president and general counsel of NPCA from 1958 to 1980, during which time he led campaigns that established numerous national park units, and was outspoken in warning against the over-development and overuse of national parks.

As general counsel of the Citizens Permanent Conference on the Potomac River, he directed efforts to block construction of a series of sixteen dams and reservoirs along the Potomac proposed by the Corps of Engineers in 1962.

A labor lawyer, he continued his legal and conservation activities until his death. He was author of more than 200 articles on parks, forests, energy, and pollution. From 1973 to 1983 he was a delegate to the United Nations Conference on the Law of the Sea.

BOOK REVIEW

C & O CANAL; THE MAKING OF A PARK, by Barry Mackintosh, History Division, National Park Service, Washington, D.C.; 1991; 208 pp.

The history of the C & O Canal Company has been thoroughly documented in numerous volumes, but the story of the park (and the Association) has not previously been recorded in detail. This work, by Park Service historian and Association member Barry Mackintosh, should stand as a companion and sequel to Sanderlin's history of the canal company. The Making of a Park tells the story of the canal from its abandonment as a commercial waterway to its present position in the national park system.

Along the way, it explores and records, in a very readable narrative, the fascinating political efforts involved in creating a park. This includes the slow process of government acquisition in the 1930's, prodded by the White House; the partial restoration prior to W.W.II; the parkway proposal in the '40's and '50's; and, of course, the Justice Douglas-Washington Post Hike of 1954 and the founding of the C & O Canal Association. This is followed by the seventeen-year campaign for Congressional approval of national historical park status. Finally, the book traces the last twenty years of expansion, planning, development, and management of the park.

Mr. Mackintosh has not backed away from telling it like it is, and he has probably bruised some feelings, but this makes his story all the more interesting. It is, altogether, a fine piece of writing, and fills an historical void that has long needed completion. Mr. Mackintosh has accomplished this expertly and thoroughly.

--Dave Johnson

HELP WANTED -- NEWSLETTER EDITOR

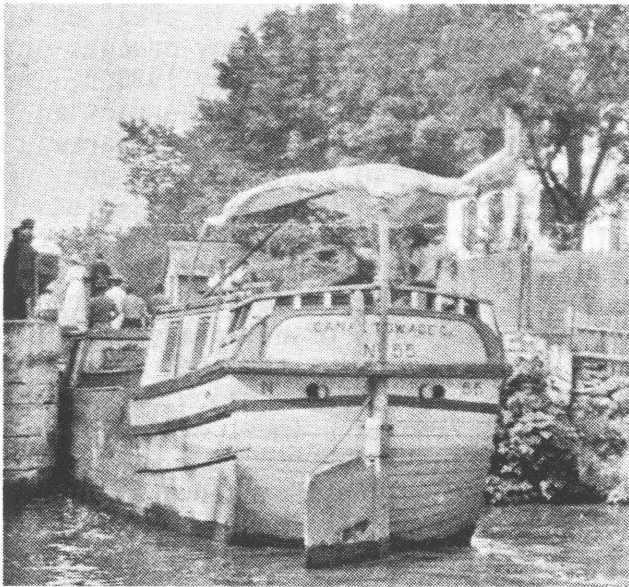
The Association is seeking a new editor for the newsletter. Access to a computer and printer and experience with word processing and/or desktop publishing is required. If you are interested or need more information, please call: Dave Johnson, 301-530-7473.

NEW MEMBER NEWS

CANAL CLIPPER RIDE FOR NEW (AND OLD) MEMBERS

The annual C & O Canal Association canal-boat ride for new members and their families will be held on Saturday, May 16th. The boat departs from the Tavern Visitors Center, Great Falls, Maryland, at 9:30 am.

Come and join us for one of the unique experiences on the canal. The costumed interpretive crew will take us on a one-hour mule-drawn trip on the Canal Clipper and we will relive history as we move through Lock 20 and up the canal. After the ride, cookies and cider will be served at the Tavern, compliments of the Membership Committee.



Canal Boat #55 at Lock 20

Although there is an entrance fee to the Park (\$3 per car), this ride on the Clipper will be free to Association members. Please be at the Great Falls Tavern, near Potomac, Maryland, no later than 9:15 am. New members will be the first on the boat, and veteran members who come will get the remaining seats. In the past, there have always been enough seats for everyone.

The Canal Clipper's regular public season will open on April 11, with trips at 10:30 am, 1 pm and 3 pm on Saturdays and

Sundays only through June 14. Beginning June 17, the boat will operate Wednesday through Sunday until September 13. After that date, it will resume the weekend only schedule until October 25. In addition, there will be a 5 pm trip every Sunday.

The Georgetown will depart from Foundry Mall on the same schedule, and in addition, will offer 1 and 3 pm trips Wednesday, Thursday, and Friday during the spring and fall seasons. The Georgetown's 5 pm trip will be on Saturdays rather than Sundays.

Golden Age and Golden Eagle passports, issued by the Park Service, entitle the holders and all persons accompanying them in a car to entry to the Park. Golden Age passes are issued free to individuals age 62 and older. Annual Golden Eagle cards are sold at the entrance station.

C & O CANAL ASSOCIATION

"Along the Towpath" is published in March, June, September and December by the C & O Canal association; P.O. Box 366, Glen Echo, MD 20812-0366.

Acting Editor: Karen Gray, 825 New Hampshire Ave. NW #304, Washington, DC 20037

Associate Editor: David M. Johnson, 9211 Wadsworth Dr.; Bethesda, MD 20817.

Production and Distribution: Susan "Butch" Henley, David M. Johnson

1992-1993 Association Officers:

President: David M. Johnson, 9211 Wadsworth Drive, Bethesda, MD 20817 (301-530-7473)

First Vice President: Harold A. Larsen, 1314 Kurtz Rd, McLean, VA 22101 (703-356-1809)

Second Vice President: Karen M. Gray, 825 New Hampshire Ave. NW #304, Washington, DC 20037 (202-333-6947)

Secretary: Norma Hendrickson, P.O. Box 7025, Silver Spring, MD 20907-7025 (301-565-9421)

Treasurer: William J. Evans, 3813 Juniper Rd., Baltimore, MD 21218 (301-243-6315)

Information Officer: Helen Shaw, 8721 Burning Tree Rd., Bethesda, MD 20817 (301-365-1933)

CALENDAR OF EVENTS

- Sat., April 4 * **VIP WORK PROJECT:** 9 am, Fletchers Boathouse. Volunteers needed for project at the Alexandria Aqueduct. Call Joan Paull (301-384-8584) or Terry Barbot (301-299-3613) to confirm location.
- Sun., April 5 * **BOARD OF DIRECTORS MEETING:** 1 pm, Glen Echo Town Hall
 * **SUPERCITIES WALK FOR MULTIPLE SCLEROSIS:** Volunteers needed. Rita Bauman (703-503-9323).
- Thu., April 23 * **OLMSTEAD ISLAND BRIDGES DEDICATION.** Call the Park at Great Falls for details (301-443-0024).
- Sat., April 25 * **38TH ANNUAL C & O CANAL ASSOCIATION DOUGLAS REUNION HIKE.** Details elsewhere in this newsletter.
- Sat., May 2 * **VIP WORK PROJECT:** 9 am, followed by Volunteers' Picnic, 12 Noon; Carderock Recreation Area just north of the Beltway off Clara Barton Parkway. Volunteers needed. Joan Paull (301-384-8584) or Terry Barbot (301-299-3613)
- Sat., May 16 * **NEW MEMBERS CANAL BOAT RIDE:** 9 am, Great Falls Tavern. Rita Bauman (703-503-9323).
- Sat., May 23 * **FAMILY BIKE HIKE--Everyone welcome:** 9 am, Riley's Lock (Seneca, MD), bring picnic lunch to eat at Whites Ferry, and return. Sonny DeForge (310-530-8830) or George Camplair (703-573-1728).
- Sat., June 6 * **VIP WORK PROJECT:** 9 am, Great Falls, Md. Volunteers needed for work on the Gold Mine Trail. Joan Paull (301-384-8584) or Terry Barbot (301-299-3613).
 * **LEVEL WALKER HIKE:** 10 am; Great Falls Tavern Visitor Center. We'll be hosted by the Sights and Sounds nature walk leaders. Karen Gray (202-333-6947).
- Sat., June 13 & Sun. 6/14 * **MONTGOMERY COUNTY OUTDOOR EXPO "ADVENTURES THROUGH MARYLAND":** Volunteers needed to help Rita Bauman (703-503-9323) at our booth.
- Sat., June 27 * **CANOE THE CANAL--Violette's Lock to Great Falls.** Ideal for anyone with no previous experience. All equipment, including PFDs available. Contacts: Carl Linden (301-229-2934) or Ken Rollins (804-448-2934).
- Sun., June 28 * **BOARD OF DIRECTORS MEETING:** 1 pm, Williamsport Library.
- Sat., July 4 & Sun. 7/5 * **BRUNSWICK FESTIVAL AND RIVER RACE:** Volunteers needed to help Rita Bauman (703-503-9323) at our booth.
- Sat., July 11 * **CUMBERLAND CANAL BOAT FESTIVAL:** Volunteers needed to help Rita Bauman (703-503-9323) at our booth.
- Sat., July 18 * **CANOE THE POTOMAC--Brunswick to Mouth of Monocacy.** Carl Linden (301-229-2934) or Ken Rollins (804-448-2934).
- Sat., Aug. 22 & Sun. 8/23 * **WILLIAMSPORT C & O CANAL DAYS:** Volunteers needed to help Rita Bauman (703-503-9323) at our booth.
- Sat., Sept. 12 * **AMERICAN DISCOVERY TRAIL-BLAZER DAY**
 * **ANNUAL PAW PAW BENDS OVERNIGHT CANOE TRIP:** Carl Linden (301-229-2934) or Ken Rollins (804-448-2934).
- Sat., Sept. 19 * **LEVEL WALKER HIKE:** 11:00 am, Paw Paw tunnel parking lot. Karen Gray (202-333-6947).
- Sat., Sept. 19 & Sun. 9/20 * **HANCOCK APPLE FESTIVAL:** Volunteers needed to help Rita Bauman (703-503-9323) at our booth.

Continued....

(CALENDAR OF EVENTS continued...)

- Sat., Oct. 10 * **OVERNIGHT BIKE TRIP**--Ferry Hill to Jordan Junction with return the
to 10/11 next day. Contacts: Sonny DeForge (310-530-8830) or George Camplair (703-573-1728).
- Mon., Oct. 19 * **INTERNATIONAL CONFERENCE ON HISTORIC CANALS**: Harpers Ferry, WV
- Wed., 10/21 Cliffside Inn on Rt. 340. Details elsewhere in this newsletter and later newsletters.
- Sat., Oct. 31 * **ANNUAL FALL HERITAGE HIKE**: in the Seneca area. Details in later newsletters.
- Sat., Dec. 12 * **LEVEL WALKER "FROSTBITE" HIKE**: 10 am, Abner Cloud House at Fletcher's Boat House. Karen Gray (202-333-6947) or Ken Rollins (804-448-2934).

BICYCLE THE TOWPATH WITH PARK RANGERS

A series of ranger-led bicycle trips covering the entire canal, spread over the spring and summer will be led by Park Rangers John Frye (an Association director) and Fred Viers. Eleven rides from May through September along the 184-mile C & O Canal towpath, beginning in Cumberland and ending in Georgetown will all be on **Saturdays**, and will be **round-trips**, so no shuttles will be necessary. The total daily round-trip riding distances will range from twenty-four to forty miles. Participants are encouraged to ride the entire canal, but those who can't are welcome to join the rides whenever their schedules permit.

All rides will **start at 10 am**. **Riders bring their own bikes, lunches, and drinking water**. Bikers should also carry tools and tire repair kits, sun glasses, sun block and head cover, and a jacket or raincoat if cool or wet weather is forecast. Additional information, including specific parking and meeting locations, is available from Rangers Viers or Frye at the Park Headquarters, 301-739-4200. The schedule of rides:

Date & Total round-trip distance:

May 9, 34 miles	Cumberland to Oldtown (Evitts Creek Aqueduct, North Branch)
May 23, 34 miles	Oldtown to Lock 60 (Town Creek Aqueduct, Paw Paw Tunnel)
June 6, 32 miles	Lock 60 to Lock 54 (Fifteen Mile Creek Aqueduct, Sideling Hill Aqueduct, Dam #6)
June 20, 40 miles	Lock 54 to Big Pool (Round Top Cement, Hancock, Tonoloway Creek Aqueduct, Licking Creek Aqueduct)
July 4, 28 miles	Big Pool to Williamsport (Fort Frederick, McCoys Ferry, Four Locks, Dam #5, Conococheague Aqueduct)
July 18, 24 miles	Williamsport to McMahons Mill (Lock 44, Falling Water)
Aug. 1, 36 miles	Big Slackwater to Mountain Lock (Dam #4, Ferry Hill, Antietam Creek Aqueduct)
Aug. 15, 32 miles	Mountain Lock to Lander (Dam #3, Harpers Ferry, Brunswick, Catoctin Aqueduct)
Aug. 29, 40 miles	Lander to Edwards Ferry (Pt. of Rocks, Monocacy Aqueduct, Whites Ferry, Broad Run Aqueduct)
Sept. 12, 34 miles	Edwards Ferry to Great Falls (Goose Creek Locks, Seneca Aqueduct, Dam #2)
Sept. 26, 28 miles	Great Falls to Georgetown (Widewater, Cabin John Bridge, Dam #1, Abner Cloud House, Tidelock).

SIGHTS AND SOUNDS WALKS:

Scheduled on the first and last Wednesday and Saturday each month, these nature walks start with a brief slide show at the Great Falls Tavern, 10 am. Leaders are Betty Bushell, Betty Henson, and Helen Johnston, all members of the Association. In addition, walks for children accompanied by an adult are scheduled on the first and last Saturday at 2 pm.

RILEY'S LOCK OPEN HOUSE:

While you're hiking in the Seneca area of the C & O Canal, stop in and visit the Girl Scouts at Riley's Lockhouse. The scouts, dressed in period clothing, will lead tours of the lockhouse, telling the story of the lockkeeper and his family in

the canal era. Tours are conducted Saturdays and Sundays from 1 to 4 pm.

VOLUNTEERS SOUGHT FOR OLMSTEAD ISLAND:

With the Olmstead Island bridges and Great Falls overlook soon to be reopened for the first time since Tropical storm Agnes washed them out in 1972, the National Park Service is seeking volunteers to assist the rangers and to aid visitors' enjoyment. Volunteers will be asked to donate approximately twelve hours per month on a regularly scheduled basis. In addition, volunteers may be needed to assist during the dedication celebration in April. If you are interested, contact Ranger Terry Barbot, volunteer coordinator, Palisades District, 301-443-0720.



"Picnic at the Tavern" is one of the paintings by Association member Barbara Gough Nuss that will be featured in a show entitled "Canal Connections" at the Torpedo Factory in Alexandria. The show will open on April 12 and run through May 4.

ON THE LEVEL...

Notes and News on the Level Walker Program
by Karen Gray, Level Walker Chair

825 New Hampshire Ave. NW #304, Washington
DC 20036 202/333-6947

HIKES SPONSORED BY THE LEVEL WALKER PROGRAM -- EVERYONE IS WELCOME!

Sat., June 6, 10 a.m. at GREAT FALLS

TAVERN VISITORS CENTER: We'll join Helen Johnson, Betty Henson and Betty Bushell on their "Sights and Sounds" walk at Great Falls. Level walkers and naturalists, these women will identify flora and fauna and share their expert knowledge of this part of the park. We'll also walk out to Olmstead Island on the new foot bridges. Bring a picnic lunch.

LEVEL WALKER MARY TWIGG walked the entire canal in sections over the course of 1991, submitting level walker reports on many of those walks as well as multiple reports on her own assigned level over the course of the year. Our congratulations and appreciation to Mary for those efforts.

SUMMARY OF LEVEL WALKER ACTIVITY IN 1991:

My special thanks and congratulations to all the active level walkers for making 1991 a particularly successful year for the Level Walker Program. Only 4 of the 69 levels were not reported on by the February 5 deadline and we ended the year with 148 active level walkers and a mere 22 inactive. These statistics reflect an astonishing increase in Level Walker presence along the canal with its concomitant contribution toward litter removal; the documentation of the condition of the towpath, prism and structures; and an indication of human and wildlife activity in the park as well as changes in the plantlife.

While the Program is clearly growing in numbers and effectiveness, more level walkers are always needed. Our goal is at least one report per quarter on each level and we are a long way from achieving that. Furthermore as the Level Walkers are a primary way for the Association to keep itself informed of conditions along the

canal and to assist in litter removal, no level can be walked too often. Anyone interested in joining the Program is more than welcome and is definitely needed. Just call or write and we'll find you a level that meets your interests and our needs.

LEVEL IN NEED OF A LEVEL WALKER:

Level #65, Miles 173.4-175.5, Spring Gap recreation area to North Branch Lock 74 needs a Level Walker. Anyone willing to take on responsibility for this upstream level please drop me a note or call.

LEVEL REPORTS FOR THE QUARTER NOVEMBER '91 - JANUARY '92 with selected comments (Includes reports received by the TOWPATH deadline only): NOTE: MAY 8 is the DEADLINE for FEBRUARY-APRIL Level Walker reports included in the Summer issue.

03: 5.0- 7.5

Lock 5-Cabin John

James & Joan Wilson (3),
Howard and Helen Rosen.

Trees being removed along the towpath by NPS. The Rosens reported meeting a walker who enjoys towpaths stroll not only with his dog, but also his goat.

04: 7.5- 9.4

Cabin John-Lock 14

Charles Bookman,
Carolyn Reeder

Erosion along edge of towpath reported along this level. Recent beaver activity.

05: 9.4- 12.3

Lock 14-Cropley

Cindy Smith

Persistent offensive odor near the Carderock Pivot Bridge plagues this area.

07: 14.3- 16.6

Gt.Falls-Swains

Mary Twigg [L.W. on #67]

08: 16.6- 19.6

Swains-Pennyfield

Paul R. Davis Jr. (3)

Mary Twigg [LW on #67]

Continued....

(LEVEL REPORT #08 continued...)

Eroded area near Swains lock repaired by NPS. Severe litter near the pumping station. 4 swans sighted on the Potomac.

09: 19.6- 22.8
Pennyfield-Seneca
Mary Twigg [LW on #67]

10: 22.8- 25.0
Seneca-10Ft.Is.
Leslie Meil (2)
Mary Twigg [LW on #67]

12: 27.2- 30.8
Sycamore Landing-Edwards Fy.
Stephen Pollock (2)
Mary Twigg [LW on #67]
Mr. Pollock reported his party played a part in the apprehension by a ranger of a poacher along the towpath who had shot squirrels and small birds.

13: 30.8- 33.2
Edwards Fy.-Harrison Is.
Don Groelsema,
Bert Grose
During '91, new stone was added to towpath along levels in this area last summer.

14: 33.2- 35.5
Harrison Is.-Whites Fy.
Betty Bushell, with Herbert Madison & Patricia Schindler
Christine & Wayne Cerniglia

15: 35.5- 39.4
Whites Fy.-Woods Lock
Patricia Schindler with Betty Bushell
NPS stonework being done on culvert at south side of White's Ferry.

16: 39.4- 42.2
Woods Lock -Monocacy
C.H. Breedlove Jr.

17: 42.2- 44.6
Monocacy-Nolands Fy.
Bob & Terry Ledley
Saw bald eagle near Tuscarora Creek.
New paving at boat ramp parking.

18: 44.6- 48.2
Nolands Fy.-Pt.of Rocks
Norma Hendrickson,
Mary Twigg [LW on #67]

19: 48.2- 51.5
Pt.of Rocks-Catoctin Aq.
John & Susan Anderson,
Jack Cook
Including 3 others, Jack Cook's

party collected 6 bags of litter.

20: 51.5- 55.0
Catoctin Aq.-Brunswick
Sylvia & Charles Diss,
Mary Twigg (2) [LW on #67]
An extraordinarily large Maple tree noted upriver from Bailey Bridge.

21: 55.0- 58.0
Brunswick-Weaverton
David Johnson,
Susan Fauntleroy,
Mary Twigg [LW on #67]
Culvert at MP 57 continues to deteriorate.

22: 58.0- 60.7
Weaverton-Harpers Ferry
Dot Johnson,
Arthur & Larue Stier
The Stiers reported seeing hundreds of Canada geese on the river in November.

24: 62.3- 65.1
Dam 3-Dargan Quarry
Mike Vidmar

25: 65.1- 67.0
Dargan Quarry-Mountain Lock
Sam Brown
Wild Turkeys along the canal.

26: 67.0- 69.4
Mountain Lock -Antietam Aq.
Robert & Martha Stevenson
Removed down trees in the canal.

27: 69.4- 72.8
Antietam-Shepherdstown
Harry Robinson,
Ken Rollins
New boat bridge and float in the Millers Falls area. Ken Rollins found an Oriole's nest on the towpath which he turned in to Park Service for educational programs.

28: 72.8- 74.0
Shepherdstown-Lock 39
Mary Twigg [LW on #67]

30: 76.7- 79.4
Snyders Landing-Lock 40
Paul Redmer
2 mature and 4 immature swan observed on the river.

31: 79.4- 81.6
Lock 40-Marsh Run Culvert
Deborah & Barry Kistler
Paul Redmer
The old John Taylor Stone House at 80.95 is being restored by owners.

Continued....

(LEVEL REPORTS continued...)

34: 88.1- 91.0
McM./Chas.Mill-Foremans Fy
Tom Perry
36: 93.0- 94.4
Lock 43-Falling Waters
Mary Gravalos
39: 102.3-105.0
High Rock Q.-Nessle Br.
E. R. Dolly Dieter
41: 106.8-108.6
Dam 5-Four Locks
Dianne Pickar (2)
42: 108.6-110.4
Four Locks-McCoys Fy.
Tim Kernan,
John Ziegler
43: 110.4-112.4
McCoys Fy.-Ft.Frederick
Karen Gray
2 culverts continue to deteriorate.
44: 112.4-114.5
Ft.Frederick-Ernestville
Jane & Hal Larsen
25 Canada geese in Big Pool in January but beaver appear to have left.
Fort Frederick State Park closed weekends this winter.
49: 127.4-130.0
Round Top Mill-Lock 53
J & M.L. Goembel
51: 134.1-136.6
Dam 6-Sideling Hill Aq.
John Popenoe
Work being done on the stone bridge piers at Polly Pond.
54: 146.6-149.7
Lock 59-Lock 60
Howard Solomon
64: 170.8-173.4
Kelly's Rd.-Spring Gap
Sonny DeForge,
Martha Foley
66: 175.5-177.7
North Branch-Mexico Farms
Tom Conlon
67: 177.7-180.7
Mexico Farms-Evitts Cr.Aq.
Mary Twigg (5)
Heavy litter at road crossings along this section. 400 mallard ducks seen in the Potomac in January.
68-69: 180.7-184.5
Evitts Cr.Aq.-Cumberland
Jack & Marybelle Light

ACTIVE LEVEL WALKERS AS OF MARCH 7:

Note: Level Walkers not reporting for 1991 by March 7, 1992 were moved to the inactive list. Such walkers are automatically re-activated when they submit a report for the current year.

Anderson, John & Susan: #19
Ausen, Barbara: #09
Ayres, Mr. & Mrs. Charles F.: #61
Blades, Brian & Bonnie: #15
Bookman, Charles: #04
Breedlove, Jr., Chris & C. H.: #16
Brown, Jeff: #09
Brown, Sam: #25
Brown, Jr., Richard F.: #38
Bryant, Mr. & Mrs.: #47
Bushell, Elizabeth L.: #14 & #15
Campbell, Mr. & Mrs. Ken: #57
Campclair, George: #28
Carisle, Dawn: #09
Carpenter, Carol Laiken: #04
Cerniglia, Christine & Wayne: #14
Clement, Rick: #26
Colbourn, Mr. & Mrs. Joseph: #21
Combs, David: #46
Conlon, Tom: #66 & #67
Cook, John: #19
Crane, Michael D.: #16
Cummings, Teresa: #12
Davis, Judy: #02
Davis, Paul: #08
DeForge, Sonny: #43
Dieter, Emma Rose: #39 & #49
Diss, Sylvia: #20
Doherty, James: #45
Dougherty, Beth A.: #02
Dulz, Tom: #62
Elamin, Yusef: #01
Elser, George & Gail: #48
Evans, William J.: #16 & #17
Fauntleroy, Susan: #21
Foley, David: #63
Foley, Martha: #64
Ford, Harry M.: #05
Foster, Margot: #02
Fox, Mr. & Mrs. Alan: #17
Francis, Chuck & Jean: #22
Francis, Jack: #07
Freedman, Sharon: #11
Frye, John: #28
Galaty, Carol: #22
Goembel, Mary & Jack: #49
Gravalos, Mary: #36

Continued....

(ACTIVE LEVEL WALKERS continued...)

Gray, Karen: #43
Greene, Richard: #09
Grigsby, Susan: #02
Groelsema, Donald: #13
Grose, Berton G.: #13
Grotenhuis, Marshall: #29
Gunther, Herbert: #55 & #56
Guyer, Bernard & Jane: #41
Haddy, Theresa: #05
Hecht, Judy: #40
Hecht, Thad & Ruth: #20
Heintzelman, Marlyn: #44
Hemingway, Sandy: #02
Hendrickson, Norma: #18
Henson, Elizabeth H.: #14 & #15
Hill, James G.: #22
Hoerauf, Dave: #12
Holway, Ellen: #37
Horstman, Jr., Dr. Harry A.: #20
Howard, Ron: #23
Johnson, David: #21
Johnson, Dorothy D.: #03
Johnston, Helen L.: #06
Kalin, Jake: #14
Kaplan, Melvin: #38
Kernan, Tim: #42
Kinter, Mr. & Mrs.: #07
Kistler, Deborah & Barry: #31
Kovenock, Paul: #54
Kridenoff, Keith D.: #60
Lanman, Janet: #09
Larsen, Mr. & Mrs.: #44
Lawson, Peggy: #10
Learned, Harold: #11
Lederman, Florence: #04
Ledley, Dr. & Mrs.: #17
Light, Jack and Marybelle: #68 & #69
Linden, Carl: #01
Madeoy, Marlow: #18
Madison, Herbert C.: #14 & #15
Marcus, Susan: #09
Marth, Mr. & Mrs.: #33
Meil, Leslie: #10
Millar, James & Gera: #02 & #05
Millar, John & Rebecca: #66 & #67
Miltenberger, Dr. F. W.: #68 & #69
Minichiello, Kent & Marcia: #52
Mopsik, Mr. & Mrs.: #58
Murdock, Clifton: #24
Murray, Dr. James: #05
Myers, Bettyjane: #32
Nelson, Mr. & Mrs. Stephen: #63
Norr, Mr. & Mrs.: #16
O'Connor, Cara: #05

O'Malley, Edward: #36
Ogilvie, Phil W.: #01
Otstot, Charles: #12
Paull, Joan: #08
Perry, Thomas: #34
Pickar, Dianne: #41
Pickering, Patricia: #14
Plotczyk, Janice: #50
Poetzschke, Edith: #40
Pollock, Stephen: #12
Popenoe, John: #51
Price, Bill: #55
Rabson, Mr. & Mrs. Robert: #23
Redmer, Paul: #30 & #31
Reeder, Carolyn: #04
Rios, Renaldo: #07
Robinson, Harry: #27
Rollins, Kenneth: #27
Rosen, Mr. & Mrs. Howard: #03 & #04
Roumm, Mr. & Mrs. Dennis: #64
Sartwell, James: #66
Schindler, Patricia S.: #14 & #15
Shaw, Mr. & Mrs.: #06
Small, Ginny: #41
Smith, Cindy: #05
Sobin, Leslie H.: #01
Solomon, Howard W.: #54
Steed, Robert & Janet: #53
Stevenson, Robert: #26 & #59
Stier, Arthur & Larue: #22
Stucker, Lyman: #19
Swann, Mr. & Mrs. Thaxter: #35
Teates, Robert & Lorrie: #15
Tracht, Nicholas C.: #49
Twigg, Mary G.: #67
Vargas, Maria: #46
Vidmar, Mike: #24
Webber, Nick & Peggy: #33
Werth, Michael: #10
Whalen, William: #38
Wheeler, John: #53
Whitman, Gren: #50
Wilkerson, Edith: #32
Will, Richard: #48
Wilson, Mr. & Mrs.: #03
Wisniewski, John and Ann: #58
Ziegler, John: #42

Level Walker Factoids:

There are 69 "levels" designated by the Level Walker Program which follows the mileages in Tom Hahn's TOWPATH GUIDE. The shortest is Level #28 from Shepherdstown Lock 38 to Lock 39--1.2 miles. The longest is #53 from 15 Mile Creek Aqueduct to Lock 59--5.7 miles.

American Discovery Trail Looks Ahead

by Reese Lukei
ADT National Coordinator

Now that the American Discovery Trail route has been identified by the scouting expedition, does that mean there is a trail that people can use? Not yet. At least not in its entirety. A line on a map does not a trail make! There is much more that must be done.

The next steps in the process have already been taken. On July 24, 1991, legislation was introduced in the U.S. House of Representatives by Congresswoman Beverly Byron (D-Md.), a long-time trail advocate, to have a study conducted by the National Park Service to consider the feasibility of having the ADT designated a national scenic trail. (Such designation requires Congress to amend the National Trails System Act.) A companion bill was introduced by Colorado Senator Hank Brown. Congressional hearings began in Washington, D.C., on November 18.

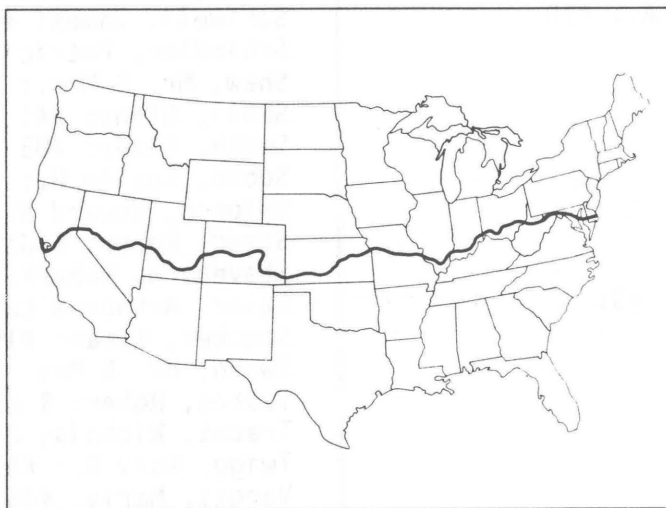
ADT legislation will be successful only if Congressional leaders get the message that we care, and deem the ADT necessary and beneficial to the general public. They also want to know that there will be someone to care for and maintain the trail.

The trail route was carefully chosen, mostly by local folks in the areas through which the trail passes. Why local folks? Because they are the people who will take the most interest in a well-maintained trail. They are also the people who will use the trail most.

The ADT is the first long-distance trail that has been intentionally routed through and near major cities as well

as many smaller cities and towns. Why? Because that's where the people are. That's where the need for trails exists. The character of the ADT will vary as widely as any trail can, offering a wilderness as well as urban and metropolitan experience.

The route was chosen to connect many existing trails together. Many of



these trails already have organized groups to care for and maintain the trail. A system of trails, as required by the National Trails System Act, can only exist if trails are connected together.

But there has to be more than just the treadway. There has to be some organization and oversight. To be successful, many partnerships must be developed and nurtured. There needs to be continuity and consistency of management throughout the trail route.

We must now build upon the foundation laid by the scouting team. Each state through which the trail passes formed a committee to make the route selection. These committees must now function to refine the route, as well as to

manage and maintain the trail, and build upon the interest and enthusiasm generated by the scouting team.

How to accomplish that? What does 1992 behold? For starters, we're planning a major event that will get people on every mile of the ADT. This happening is being planned for September 12, 1992, with major support

from the Rockport Company and continued support from scouting team sponsors. The tentative name for this event is "Rockport's American Discovery Trailblazer Day." It will be coordinated through state committees in cooperation with Rockport.

What's involved in our ADT Day? Everything from walking, bicycling, or horseback riding small segments, to extended backpack trips on longer stretches. Other events might include marking the trail or undertaking trail maintenance.

The principle object will be to have fun and involve as many people in trail-related activities as possible. National and local publicity will promote this event. Think of it as an awareness day.

And the ultimate goal? To make the American Discovery Trail a reality. A trail that winds through forests, mountains, and communities involving a large number of active volunteers and partnerships with trails organizations and government agencies. A national trail of trails.

The ADT is about people and for people. Trails don't just happen — they happen because of people. The ADT can be you. Get involved! For more information, call (800) 851-3442.

DIRECTORY C & O CANAL NHP
TELEPHONE NUMBERS & PERSONNEL

HEADQUARTERS: Box 4, Sharpsburg, MD 21782 301-739-4200

Superintendent - Thomas O. Hobbs
Assistant Superintendent - Terrie Savering
Administrative Officer - Chris Streng
Chief of Maintenance - Sam May
Chief Ranger - Keith Whisenant
Resources Manager - Walter McMann
Cultural Resources Manager - Susan Frye
Chief, Interpretation & Visitor Services - Gordon Gay

PALISADES DISTRICT: 11710 MacArthur Blvd., Potomac,
MD 20854

GREAT FALLS TAVERN

General information recording 301-299-2026
Specific information requests 301-299-3613
District Ranger - Tom Nash 301-443-0721
Volunteer Coordinator - Terry Barbot 301-299-3613

GEORGETOWN VISITORS CENTER: 1055 Thomas Jefferson
St., Washington DC
Foundry Mall 202-653-5844

The Palisades District begins at Milepost 0 (Tidelock) and continues to near Milepost 42 (Monocacy Aqueduct).

PIEDMONT DISTRICT: Canal Road, Sharpsburg, MD 21782
(near Antietam Aqueduct) 301-739-4200
After hours 301-739-6179
District Ranger - Dwight Stinson

The Piedmont District begins near Milepost 42 (Monocacy Aqueduct) and ends at Milepost 106 near Dam 5.

ALLEGHENY DISTRICT: East Main St., Hancock, MD 21750
301-678-5463
District Ranger - Martin Gallery

WESTERN MARYLAND STATION VISITOR CENTER 301-722-8226
Ranger - Rita Knox

The Allegheny District begins at Milepost 106 near Dam 5 and ends at the Canal Terminus, Cumberland, Milepost 184.5

ALONG THE TOWPATH, March 1992



Jim Bryant & Bill Speck work on the fence behind the new Georgetown Visitor Center during the Association's December 1991 Volunteer in the Park workday.



Lyman Stucker enjoys the winter sun following the Association's hike at Carderock in January.

CHESAPEAKE & OHIO CANAL ASSOCIATION INC.
FINANCIAL STATEMENT
31 December 1991

BALANCE SHEET	<u>12-31-91</u>	<u>12-31-90</u>
ASSETS:		
Cash	\$13,616	\$10,289
Inventories (T-shirts, totes, patches)	1,675	2,320
Other Current Assets	514	556
Net Property (cost less accum. depreciation)	340	410
Total Assets	<u>16,145</u>	<u>13,575</u>
LIABILITIES:		
Davies Legal Fund	2,401	345
Revenue for subsequent periods	295	1,451
Other Liabilities	38	61
Accumulated Operating Results	13,411	11,718
Total Liabilities and Accumulated Oper. Results	<u>16,145</u>	<u>13,575</u>
STATEMENT OF INCOME AND EXPENSE		
ADMINISTRATIVE FUNCTIONS:		
Income: Dues	9,425	9,075
Interest	629	500
Miscellaneous	106	197
Total Income	<u>10,160</u>	<u>9,772</u>
Expense: Newsletter	4,290	3,755
Bulletin	282	-0-
President	546	546
Secretary	147	206
Treasurer	249	275
Information Officer	-0-	24
Level Walker Chair	71	75
Environmental Committee	-0-	68
Membership Coordinator	618	656
Membership Committee	1,067	625
Program Committee	-0-	27
Nominating Committee	311	64
Stationery	-0-	250
Dues and Contributions	275	275
National Park Service grant	1,000	1,000
Depreciation	70	30
Transfer to Davies Legal Fund	500	500
Total Expense	<u>9,426</u>	<u>8,376</u>
Net Administrative Operating Results	734	1,396
OTHER ACTIVITIES:		
Income: Special Events (Hikes, dinners)	4,563	3,568
T-shirts, totes, patches, books	1,370	349
Total Income	<u>5,933</u>	<u>4,117</u>
Expense: Special Events (Hikes, dinners)	4,255	3,534
Cost of Goods Sold	719	336
Total Expense	<u>4,974</u>	<u>3,870</u>
Net Other Activities	959	247
NET OPERATING RESULTS	1,693	1,643

THE ASSOCIATION WELCOMES NEW MEMBERS

Azar Attura, Arlington, VA
 Maria Beal, McLean, VA
 Bonnie C. Blades, Bethesda, MD
 Renate Metcalf Brenneke, Silver Spring, MD
 Richard F. Brown, Jr., Hagerstown, MD
 R. E. Byron, Bethesda, MD
 Richard J. Clement, VMD, Potomac, Md
 Michael D. Crane, Boyds, Md
 Teresa M. Cummings & Dave Hoerauf, Poolesville, MD
 Molly Davis, Washington, DC
 Richard Dubin, Rockville, MD
 John A. Dugger, Bethesda, MD
 George & Gail Elser, Hancock, MD
 Melvyn Estrin, Bethesda, MD
 Alexander B. Fountain, Oxford, MD
 Robert E. Goodman, Latrobe, PA
 Robert B. Grafton, Vienna, Va
 Mr. & Mrs. Joe Himes, Brunswick, MD
 Susan Hook, Silver Spring, MD
 Deborah Howell & C. Peter Magrath, Glen Echo, MD
 Patricia Johnson, Gaithersburg, MD
 S. Gregory Jones, Kensington, MD

Earl J. Knight, Jr., Beltsville, MD
 James E. Leader, Bethesda, MD
 Cathy A. Lewis, Alexandria, Va
 Joe Loughran, Vienna, VA
 Robert W. Martin, Quincy, PA
 Norman McBurney, Potomac, MD
 Richard Metcalf, Chevy Chase, MD
 Mrs. Gantt Wm. Miller, Jr., Odessa, DE
 Mr. & Mrs. Shawn Ott, Charleston, SC
 J. Michael Reges, Martinsburg, WV
 Betty G. Sanders, Washington, DC
 Sidney M. Skjei, Chantilly, VA
 Sanford Slavin, Rockville, MD
 Albert H. Small, Bethesda, MD
 Mildreth C. (Bobbie) Thornberg, Washington, DC
 P. O. Unger, Bethesda, MD
 Ray C. Valko, Latrobe, PA
 Sandra Van Fossen & Kirk Davidson, Bethesda, MD
 Mr. & Mrs. Eric Von Salzen, Chevy Chase, MD
 Michael Weber, Washington, DC
 Sallie White-Bishton, Glen Echo, MD

MEMBERSHIP RENEWAL: We greatly appreciate all of you who have already paid your 1992 dues--including new members who joined at the end of 1991. However, those whose membership expired on 31 December will be dropped from the mailing list after this newsletter unless we receive your payment. If you haven't done so yet, please use the form below to renew today.

MEMBERSHIP RENEWAL FOR CALENDAR YEAR 1992

I enclose my dues to renew my membership in the C & O Canal Association for 1992 in the category checked at the right:

NAME: _____

ADDRESS: _____

TELEPHONE: () _____

INDIVIDUAL: \$10 ☐

FAMILY: \$15 ☐

PATRON: \$20 ☐

My contribution to the William E. Davies Fund: \$ _____

Please return this form with your payment. Make your check payable to "C & O Canal Association" and mail to: C & O Canal Association, P.O. Box 366, Glen Echo, MD 20812-0366.

Total enclosed: \$ _____

DOUGLAS REUNION HIKE

DINNER RESERVATION

APRIL 25, 1992

Please reserve _____ dinners for the Douglas Hike at \$8.00 per person.

NAMES: _____ Total enclosed: \$ _____

Reservations must be received by April 18.

Please make your check payable to "C & O Canal Association" and mail it with this form to: C & O Canal Association, P.O. Box 366, Glen Echo, MD 20812-0366

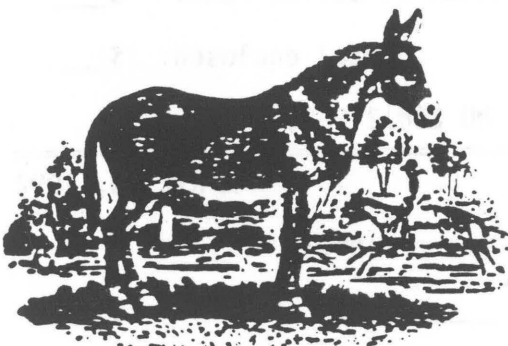
HIEROGLYPHICS OF THE CANAL ERA. Join a park ranger to discover the rarely seen carvings from the C&O Canal that adorn the walls and capstones of Locks 16 through 19. Be prepared to scamper down banks and tiptoe across lockgates as we observe these markings from the past. Dress for the weather. You need to call for reservations, as this program will be limited. 301-299-3613. Meet at Great Falls Tavern Visitor Center, Saturday, March 21, 10:00 a.m.

DISCOVER BURIED TREASURE. Winter unveils many historic treasures that are buried from view at other times of the year. Join a ranger for a two-mile hike along the C & O Canal to discover important structures that are usually covered by dense vegetation. Sturdy footgear is a must and dress for the weather. Meet at the Great Falls Tavern Visitor Center, Sunday, March 22, 2:00 p.m.

C & O Canal Association
P. O. Box 366
Glen Echo, Maryland 20812-0366



DATED MATERIAL - PLEASE EXPEDITE



1 The Mule

JOHN C FRYE
3122 KAETZEL ROAD
GAPLAND, MD 21736