



C & O CANAL ASSOCIATION

ALONG THE TOWPATH

...concerned with the conservation of the natural and historical environment of the C&O Canal and the Potomac River Basin

VOLUME XXV

MARCH 1993

NUMBER 1

POTOMAC PARKWAY

THE WASHINGTON POST, January 3, 1954.

"The renewal of official interest in the proposed parkway along the old C & O Canal between Great Falls and Cumberland will stir the enthusiasm of many Washingtonians. The purpose of such a parkway would be to open up the greatest scenic asset in this area -- the Potomac River -- to wider public enjoyment. Maryland is already building a 60-mile stretch of the proposed road up the river from Hancock. Local interest is largely concentrated, however, in the section of the proposed parkway that would stretch from Great Falls to Harpers Ferry.

Any fears that this project would destroy restored sections of the old canal between Washington and Great Falls can be put aside. This stretch of the river is to be opened up by the George Washington Memorial Highway. The parkway now under discussion would extend up the river from Great Falls on the bed of the abandoned C & O Canal or on the adjacent towpath. By utilizing the old canal -- no longer a commercial or a scenic asset -- it is estimated that the parkway could be built for \$100,000 a mile. The lovely Potomac Valley could thus be made available to sightseers, campers, fishermen and hikers with little detracting from its beauty. The basic advantage of the parkway is that it would enable more people to enjoy beauties now seen by very few -- in the fashion say, of the magnificent Blue Ridge parkway. Large areas of wilderness would be left and ought to be protected permanently against further encroachment.

Behind this proposal also is the hope that, with the Potomac more accessible, it would be cleaned up and made a great recreational asset. Washington has been astonishingly tardy

in taking advantage of this natural playground. The famous founder of this Capital would be shocked to learn that the Potomac has become some sort of open sewer and that some of the most attractive portions of the valley are almost completely unknown even in a century and a half. By

naming a committee to study the idea of a C & O Canal parkway, Robert M. Watkins, chairman of the Regional Planning Council, appears to have caught some of the vision of George Washington in locating the Capital here. It will take a great deal of work and practical planning, however, if this vision of a great Potomac playground is to be realized."

And so, it all began in 1954 with a letter written by Mr. Merlo Pusey to the editor of THE WASHINGTON POST, Mr. Robert H. Estabrook. This was enough to stir Supreme Court Justice William O. Douglas to respond with a challenge to the writer and the editor to walk the Towpath and view for themselves the sylvan delights.

Justice Douglas responded with the following letter to THE WASHINGTON POST on January 19, 1954:

POTOMAC SANCTUARY

"The discussion concerning the construction of a Parkway along the Chesapeake & Ohio Canal arouses many people. Fishermen, hunters, hikers, campers, ornithologists, and others who like to get acquainted with nature first-hand and on their own are opposed to making a highway out of this sanctuary.

The stretch of 185 miles of country from Washington, D.C., to Cumberland, Md., is one of the most fascinating and picturesque in the Nation. The river and its islands are part

POTOMAC SANCTUARY - continued

of the charm. The cliffs, the streams, the draws, the benches and beaches, the swamps are another part. The birds and game, the blaze of color in the spring and fall, the cattails in the swamp, the blush of buds in late winter--these are also some of the glory of the place.

In the early twenties Mr. Justice Brandeis travelled the canal and river by canoe to Cumberland. It was for him exciting adventure and recreation. Hundreds of us still use this sanctuary for hiking and camping. It is a refuge, a place of retreat, a long stretch of quiet and peace at the Capitol's back door - a wilderness where man can be alone with his thoughts, a sanctuary where he can commune with God and with nature, a place not yet marred by the roar of wheels and the sound of horns.

It is a place for girls and boys, men and women. One can hike 15 or 20 miles on a Sunday afternoon, or sleep on high dry ground in the quiet of a forest, or just go and sit with no sound except water lapping at one's feet. It is a sanctuary for everyone who loves woods - a sanctuary that would be utterly destroyed by a fine two-lane highway.

I wish the man who wrote your editorial of January 3, 1954, approving the parkway would take time off and come with me. We would go with packs on our backs and walk the 185 miles to Cumberland. I feel that if your editor did, he would return a new man and use the power of your great editorial page to keep this sanctuary untouched.

One who walked the canal its full length could plead that cause with the eloquence of a John Muir. He would get to know the muskrats, badgers, and fox; he would hear the roar of wind in thickets; he would see strange islands and promontories through the fantasy of fog; he would discover the glory there is in the first flower of spring, the glory there is even in a blade of grass; the whistling wings of ducks would make silence have new values for him. Certain it is that he could never acquire that understanding going 60, or even 25, miles an hour."

WILLIAM O. DOUGLAS
Washington

Thank Goodness, the rest is history.

April 24, 1993, marks the 39th annual celebration of the historic Justice Douglas hike by the C & O Canal Association. And in 1994, we will celebrate the 40th year with a commemorative through-hike. Plans are already being made for that extravaganza. Articles on both the 1993 and 1994 hikes follow. Each 1993 issue of *Along the Towpath* will provide an article of historical data about events surrounding the historical hike. I hope you find this informative and enjoyable.

- - Editor

• • • • •

DOUGLAS REUNION HIKE TO TAKE PLACE APRIL 24, 1993 FROM OLDTOWN TO NORTH BRANCH

The Association's thirty-ninth annual Justice Douglas Reunion Hike will be held on April 24, 1993. The hike will be between Oldtown and North Branch, a distance of about nine miles. Members participating in the hike should meet at the parking area at North Branch, where buses will depart for Oldtown at 11:00 a.m.

The hike will begin at Lock 70, and will pass Lock 71, the Alum Hill Cut, Spring Gap, Blue Spring, and Locks 72 through 75. The canal boat replica, Cumberland, is located at Lock 75, and marks the end of the hike. Although we have hiked from Spring Gap to Cumberland several times in recent years, our annual hikes have not covered the section between Oldtown and Spring Gap for many years.

For those who don't find nine miles sufficiently challenging, the canal east of Oldtown is very scenic, and will reward any who choose to walk downstream for a mile or two with a look at more locks as well as additional exercise, before they turn back to the west.

Hikers should bring their own lunches. There are several spots in the first couple of miles of the route that will make pleasant stopping places for a lunch break, including the far end of the Alum Cut and Pigmans Ferry Hiker-Biker.

A fare of \$1 will be collected for the bus.

Dinner will be at the Ali Ghan Shrine Country Club, with Happy Hour (cash bar) beginning at five o'clock, followed by dinner at six. Advance reservations are required for dinner. Please use the reservations for at the end of this newsletter, and mail it to the Association not later than April 17. The cost of the dinner is \$14.50 per person, and payment with your reservation form is requested.

DIRECTIONS: Take MD 51 from Cumberland to North Branch, and follow the signs to the C & O Canal. Parking will be in the lot next to the canal boat replica.

From Lock 74/75 -- North Branch to the Ali Ghan Shrine Country Club -- Leave the parking area by River Road -- Turn right at 'PPG' Road. 0.4 miles to Industrial Blvd (MD RT 51, North) 2.8 miles to Messick Road -- Right turn, then 0.7 miles to STOP, then left (I68 sign). 0.6 miles to Willowbrook Road -- Turn right, travel 1.5 miles to join I68 East, 3.3 miles on I68 to Exit 46 (MD 144), then right and 0.2 miles to Ali Ghan Shrine Club Entrance Road (right).

DIRECTIONS - continued

For those coming from Hagerstown west for dinner only, take I70 to I68 (west) at Hancock. Exit at Exit 44 off to underpass. Right at stop, then pass under I68, make first left -- MD 144, 0.4 miles to Shrine Club entrance.

.....

IN 1994, HIKE THE FULL LENGTH OF THE CANAL

The idea of walking the full length of the C & O Canal in one continuous hike has attracted many people to the park, but logistic complexities or their difficulty in convincing friends or family to go along have prevented many of them from fulfilling that dream.

Next year, you will again have the opportunity to enjoy that experience, and share it with a group of like-minded members of the C & O Canal Association, as we undertake our quinquennial whole canal hike.

The Association has commemorated the historic 1954 hike down the C & O Canal by Justice Douglas with a reunion walk every year since then. The twentieth anniversary, in 1974, was celebrated by a full-distance trek from Cumberland to Georgetown, and that was the beginning of a tradition that was renewed in '79, '84, and '89. As we look ahead to 1994 and the fortieth anniversary of the founding event of our Association, it is time to begin planning for the next through-hike.

The 1994, full-canal hike will be held during the second half of April. It is expected to take fourteen days, with an average daily distance between twelve and fifteen miles. We will camp each night, with the exception of the mid-hike weekend. All meals will be provided, either in camp or catered in local communities along the way. Heavy duffel will be transported between campsites, so backpacking tents and sleeping bags will not be required.

Members may sign on for the full hike, or for just the first or second week (with preference to two-week hikers). Participation will be limited to the capacity of the campsites. Although formal registration will not begin until next fall, priority will be given to those who participate in the planning process from the beginning. Committees to work on various aspects of the hike will be formed this summer, and all hikers will be expected to share in this planning.

Therefore, members who want to take part in the full-distance hike scheduled for April 1994 are requested to send their names and addresses to the Association, (P. O. Box 366, Glen Echo, Maryland 20812). They will be placed on the preliminary list in the order they are received. All

members who are on the list will be invited to the planning meetings that will be scheduled to begin this summer.

.....

ANNUAL MEETING NOTES.....

The 1993 Annual Meeting was held March 6, at the Shepherdstown Volunteer Fire Company Hall, with over 100 members and guests in attendance. Fifty or so early arrivals accompanied NPS Ranger and Association Board member John Frye on an interpretive hike around Ferry Hill.

An informal coffee hour occurred at 1:00 p.m. to meet the candidates. President Dave Johnson then called the meeting to order at 2:00 p.m. Following reports from officers, committee chairs, and program coordinators, the Association unanimously elected the incumbent officers (President - Dave Johnson, First Vice President Hal Larsen, Second Vice President - Keith Kridenoff, Secretary - Norma Hendrickson, Treasurer - Bill Evans, Information Officer - Helen Shaw) to terms for the coming year. Tom Conlon, Nancy Long, and Ken Rollins were re-elected to three year terms as directors. In addition, two new directors were elected to three year terms: Charles Ayers and Elizabeth Scott. Board Members continuing their terms include John Fondersmith, Sharon Friedman, Orrin Long, James Millar, Douglass Mussen, Ralph Donnelly, John Frye, Carl Linden, Linda Perry, and Lyman Stucker.

Of special note is the retirement of Karen Gray as Level Walker Chair, Ellen Hollway as Membership Coordinator, and the announcement of Joan Paull's retirement as VIP Coordinator. These individuals were commended for the work they have done for the Association. Keith Kridenoff and William Bauman are succeeding Karen and Ellen, respectively. No relief for Joan has been announced.

A social hour sponsored by the Association, was enjoyed by all. Thanks to our hosts Carl Linden, John Fondersmith, and John Chandler.

Following a dinner of ham, chicken and all the trimmings, President Dave Johnson awarded "Paw Paw Leaf Clusters" to last year's recipients of the "Mule Shoe" Award. Additional "Mule Shoe" Awards were made to Sonny DeForge, George Camplair, Sharon Friedman, Norma Hendrickson, Orrin Long, Ralph Donnelly, Dave Gardner, Jim Millar, Jack Stickles, Lesley McFarland, Emmie Woodward, and Bob Perry.

Superintendent Hobbs reported on project accomplishments of last year including the Hancock rewatering, Williamsport Restoration, and the Capital Crescent Trail. He also spoke of the potential for new project funding through economic stimulus programs and answered several questions from the floor.

PRESIDENT'S REPORT - ANNUAL MEETING - MARCH 6, 1992

Nineteen-ninety-two was an exceptional year for the Park and for the Association. We achieved unprecedented membership growth, hosted visitors from overseas, and co-sponsored a major international conference.

In June we were visited by member of the Inland Waterways Association (IWA), which is Great Britain's national canal society. The group was on a three-week tour of American Canals, and we were honored to have them as our guests for two days on the C & O. Highlighting their visit was a potluck picnic at Great Falls Tavern, which many of you attended. This was jointly hosted by the Association, the Park Service, the Friends of Great Falls Tavern, and Virginia Canals & Navigations Society. The following day, we took our British friends to several additional points on the canal, ending at Harpers Ferry. Another highlight of the IWA tour was the canal symposium in Buffalo, New York, organized by the American and Canadian Canal Societies, at which the Association was also represented.

Certainly, however, the high point of the year was the International Conference on Historic Canals at Harpers Ferry in October, sponsored by the Park and the Association. This was the fifth annual gathering bringing together canal park professionals and amateur canal buffs; previous meetings had been held in Illinois, Pennsylvania, Ohio, and Ontario. Our conference drew over eighty delegates from eleven states, two provinces, and the United Kingdom, representing about 35 parks, agencies, state canal societies, and friends groups, for four days of field trips and interesting speakers. My thanks go to all of the members of the Association who participated and assisted in the conference, to Superintendent Hobbs for his cooperation and support, and especially to Hal Larsen, John Frye, and Gordon Gay, who worked for eleven months to make it happen. We look forward to seeing you all this fall in Nova Scotia, for the sixth annual conference.

The last twelve months were also memorable for the park, because we saw, at last, the reopening of the Olmsted Bridges after twenty years, thanks to a combination of federal, state, county, and public support, and a masterpiece of carpentry by the park's maintenance division; great progress on the restoration of the canal at Williamsport, and an official rewatering at Hancock. In the new year, we look forward to completion of the portion of the Capital Crescent Trail that will be part of the C & O Canal. There are many new faces on the park staff, and I hope that you will soon get to know them, because they all represent the spirit and professionalism that we have come to recognize and expect in our national park rangers.

Membership-wise and financially, the Association probably has never been stronger. The growth in membership last year brought our total memberships at year end to over nine hundred. When we extrapolate this to account for family

memberships, it equates to about 1,250 people. Our membership committee, chaired by Rita Bauman, sparked the efforts to attract new members, staffing booths at numerous local fairs and festivals in the Potomac Valley, and sponsoring special events to encourage new members to participate in our activities. Without the participation of the membership committee and other volunteers who contributed their time and effort to these activities, we would not have been represented at these festivals.

In August, we were the subjects of a very nice article in the Weekend section of THE WASHINGTON POST. This publicity resulted in an additional surge of new memberships.

For many years our membership records have been diligently maintained by Ellen Holway, who has served as Membership Coordinator since 1980. She has prepared and mailed your membership cards, made green badges, and mailed out packages of materials to new member but, most importantly, she has kept track of all of our members, their address changes, and membership renewals, by hand on three-by-five cards. Our mailing labels have been prepared by Butch Henley and the American Hiking Society, based on updates that Ellen has carefully filled out and submitted prior to each scheduled mailing. We owe a tremendous amount of appreciation to Ellen and Butch for their loyal and dedicated work over the years. During this time, memberships have grown from barely more than three hundred to nearly one thousand. This has made manual record-keeping and out-of-house label production increasingly burdensome to maintain. Accordingly, your Board of Directors acted to acquire a computer and software so that we can produce our membership listings and mailing labels for the newsletter and bulletin in-house. This step into the world of ADP befits a growing organization, and follows our conversion last year to a desk-top publishing system to produce the newsletter. With this change, we gratefully thank Ellen and Butch for their years of faithful service to the Association and, at the same time, are pleased to announce the appointment of William Bauman as our new Membership Coordinator, to operate the new data processing system.

Our strong financial position is due to several factors. One is the frugality with which all of our program managers handled their budgets and controlled their expenses. In addition, of course, membership growth has increased our income without the necessity for a dues increase. The record-keeping and reporting by our Treasurer, Bill Evans, has kept the Board of Directors abreast of our status throughout the year, and allowed the board to make responsible and meaningful budget and spending decisions, based on sound fiscal information. As Bill will shortly report to you, we covered our expenses in every category of our accounts in 1992, with a net excess of income over expense of about 7%. This surplus will be used to augment our programs in 1993. In the financial area, credit must also go

PRESIDENT'S REPORT - continued

to the members who served on the Budget Committee: Judy Hecht, Lou Odom, and Jack Stickles, and our Internal Audit Committee: John Chandler and Ken Rollins.

The Association has not increased its dues structure since 1986. During this time, our annual general and administrative budget has grown significantly, from less than \$5K to over \$13K, but our revenue has kept pace, due to our membership growth. Some of our expense categories stay relatively level, regardless of the number of members. Other functions, such as the newsletter, where the cost is driven by the number of copies printed and mailed, increase in direct proportion to membership. During this period of expansion, we have also been able to broaden our activities and make an annual donation to the park in the form of project support or equipment purchase. There may come a time, however, when because of inflation or a leveling of membership, we will be faced with the choice of raising dues or cutting back on some of our activities. For this reason, we created a special committee in the Board of Directors last year to study the dues structure and to look at potential future programs.

One other financial item I want to comment on is the continued growth of the Davies Legal Fund. Several years ago, when the Association was involved in litigation over the Wiley Ford Bridge in South Cumberland, we were constrained from fully pursuing the matter because we lacked the resources to carry a legal battle very far. At that time, Bill Davies proposed that we establish a reserve fund of \$10K, to be available to support future legal fights to defend the canal against potential encroachments. The fund is being raised mainly through contributions from members. We have been fortunate, since the original litigation was settled, that there have been no additional occasions for which we have had to draw on the fund, and it has continued to grow. In 1992, 89 members contributed a total of \$1,031 to the fund, bringing the balance to nearly 40% of the goal set in Bill Davies' original resolution. Since the beginning of 1993, nearly one hundred additional donations, totalling over \$1,400, have been received from members. Your generous support to build this fund for the future preservation of the canal is greatly appreciated.

Our Level Walker program also had a very successful year under the leadership of Karen Gray. She will report to you that last year there were more level walkers than ever, and there was at least one report from every single level. In addition to assigning levels, and monitoring and processing the reports, Karen organized and led a number of level walker hikes on different parts of the canal, presented a talk on organizing and directing the level walker program at the International Canal Conference, and wrote an article on our program for the new IWA publication *WORLD WIDE WATERWAYS*. Karen is ending her tenure as level walker chair at this meeting, and we will greatly miss her leadership of the program and participation on the Board.

This was the year that our Archives Committee, headed by Vice President Hal Larsen, had hoped to move our collections into a permanent home at park headquarters at Ferry Hill. Due to unforeseen construction problems with the new building that the park service is erecting, the planned consolidation of our records has not yet taken place, but we continue to look forward to the day when it will happen.

Our Programs Committee, chaired by Ken Rollins, is responsible for planning our major events, and coordinating the activities organized by other committees. The major events included the Douglas Hike and dinner at Hancock in April, the Heritage Hike and dinner at Izaak Walton in October, and overnight canoe and bicycle trips during the summer and fall. Much of the work in the planning and organization of these events was done by Sonny DeForge, George Camplair, Carl Linden, Sharon Freedman, Ralph & Adele Donnelly, and others, without whose help these events would not have taken place.

Joan Paull will tell you of the Volunteers-in-the-Park workdays that we hold each month, and the many projects that we completed and how many man-hours of effort that represented. This is a regular part of the Association's program, and one in which we try to put something physical back into the park from which we obtain so much pleasure and which the Association, as a friends group, is dedicated to support. Therefore, while it gives much satisfaction to think of the work we have done, it is disappointing to consider how much more we could be doing if more members of the Association would take part in these projects. The fact is that there are less than two dozen members who are regular participants in our volunteer program. Our program is in the Palisades District, and while many of you may live too far away, the majority of our membership lives in the metro area, and could participate. There are also those of you who work as volunteers in projects and programs not directly sponsored by the Association, and your work is equally appreciated. But for the members who are not regular volunteers, and who live within commuting distance of our work areas, I cordially invite you to come out some Saturday morning and give us a helping hand. Joan will be retiring as our V-I-P coordinator at the end of our spring season, after leading this program for ten years. This will give one of you the opportunity to take over management of this program for the Association.

When Don Besom left for his overseas post with the State Department, Bob Perry stepped in and took over as editor of our newsletter, *ALONG THE TOWPATH*. He has continued to make this a very attractive and readable publication, and has produced a mixture of material on the canal of interest to a broad audience. This includes articles on the history of the canal as well as about Association activities and current developments in the park, and a generous use of photographs. It has generated many

PRESIDENT'S REPORT - continued

favorable comments from members, and I join them in expressing my appreciation for his fine efforts.

I also want to acknowledge the hard work put in by our Secretary, Norma Hendrickson, who keeps and distributes the minutes of all of the Board Meetings; Helen Shaw, our Information Officer, who handles publicity and press releases, and chairs the Publications Committee; Orrin Long, who chairs the Environmental Committee; and by all of the members of the Board, who meet six times a year to plan and discuss the Association's business, and who serve on committees and undertake special assignments which often go unreported to you, but nevertheless are essential to making the Association operate.

As we enter the year leading up to the fortieth anniversary of Justice Douglas's historic hike, which we regard as the founding event of our society, the Association is stronger financially and in membership than perhaps ever before. We are faced with many challenges, however, if we are to continue to grow and fulfill the purposes and objectives for which we were established. To do this, each member of the Association must play an active part. The people I have mentioned, and who will now report to you in detail on their activities, have been the leaders of this organization for many years.

However, always remember that these are not paid employees. Everyone who works for the success of the C & O Canal Association is a volunteer, and does it for the enjoyment and satisfaction it brings. An association with over a thousand members cannot rely on a couple of dozen people to carry out all of its work. We need more from you than just your ten dollars a year and your smiling faces on the last Saturday in April. Therefore, I call on all of you to become truly active members of the Association:

- Be a Level Walker. Walk your level on a regular basis and submit your reports to the Level Walker chairman.

- If you live in the metropolitan area, come out for our monthly volunteer work days. If you live along another section of the canal, volunteer in the park there. If we have enough participants in other areas, we can start additional VIP groups.

- Volunteer to serve on a standing or ad hoc committee. We need people to be hike organizers and to take part in many other activities, such as manning our booth at festivals.

- Contribute articles or photographs to the newsletter. Do some original research on the history of the canal or the park, or write about your own experiences, and share them with the membership.

- Don't forget to participate in our other events besides the Douglas and Heritage Hikes. We have informal activities almost every month, including Level Walker hikes, bike trips, canoe trips, and the Membership Committee's walks. These are always a lot of fun, and the best way to get to know the canal and your fellow members better.

- Finally, tell your friends and colleagues about the Association and invite them to our hikes and activities. Encourage them to join, and help increase our ability to grow and continue to pursue our objectives along the C&O Canal.

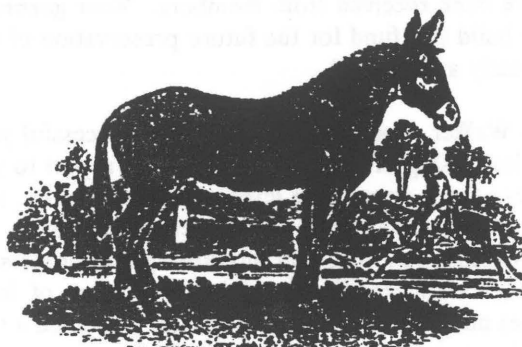
- - Dave Johnson

• • • • •

THE ASSOCIATION WELCOMES NEW MEMBERS

Roger C. Abe, Cumberland, MD
Drs. Gary & Linda Berg-Cross, Potomac, MD
Sharon Cochran, Washington, D.C.
Dorothy Davidson, Reston, VA
David W. Dunlop, Washington, D.C.
Howard Elitzak, Arlington, VA
Christopher Fioravante, Ellicott City, MD
Diana Frazier, Takoma Park, MD
Gale Harris, Knoxville, MD
James S. Joiner, Old Town, MD
Kathy Kupper, Arlington, VA
Nittaya Maphongphong, Silver Spring, MD
Edythe S. Perry, Winchester, VA
Alan C. Randall, Chevy Chase, MD
Paul R. Reid, Jr., Hagerstown, MD
Joseph Robbins, Rockville, MD

• • • • •



The Mule

TREASURER'S REPORT

- 1992 -

CHESAPEAKE & OHIO CANAL ASSOCIATION INC.

FINANCIAL STATEMENTS

31 December 1992

	12-31-92	12-31-91
BALANCE SHEET		
ASSETS:		
Cash and Receivables	\$ 14,307	\$ 13,616
Prepaid Expenses	1,018	389
Other Current Assets	50	125
Inventories (T-shirts, books, etc)	1,330	1,675
Net Prpty & Equip (cost less accum deprec)	<u>3,638</u>	<u>340</u>
TOTAL ASSETS	20,343	16,145
	=====	=====
LIABILITIES:		
Davies Legal Fund	\$ 3,932	\$ 2,401
Revenue for Subsequent Periods	705	295
Accounts Payable	<u>505</u>	<u>38</u>
TOTAL LIABILITIES	5,142	2,734
ACCUMULATED OPERATING RESULTS:	<u>15,200</u>	<u>13,411</u>
TOTAL LIABILITIES & EQUITY	20,343	16,145
	=====	=====

STATEMENT OF INCOME AND EXPENSE			
INCOME:			
Dues	\$ 11,075	\$	9,425
Interest	540		629
Miscellaneous	<u>279</u>		<u>106</u>
Subtotal Administrative Income	11,894		10,160
Special Events (Ann'l Mtg, Hikes)	4,350		4,563
Int'l Conference on Historic Canals	9,564		-0-
Sales - T-shirts, totes, books, etc.	<u>1,308</u>		<u>1,370</u>
TOTAL INCOME	<u>27,116</u>		<u>16,093</u>

EXPENSE:		
Newsletter	\$ 5,550	\$ 4,290
Bulletin	1,221	282
President	444	546
Secretary	109	147
Treasurer	169	249
Information Officer	2	-0-
Level Walkers	88	71
Membership Coordinator	719	618
Membership Committee	394	1,067
Nominating Committee	10	311
Publications Committee	9	-0-
Dues and Contributions	350	275
Grant to National Park Service	1,955	1,000
Depreciation	63	70
Davies Legal Fund	<u>500</u>	<u>500</u>
Subtotal Administrative Expense	11,583	9,426
Special Events (Ann'l Mtg, Hikes)	3,811	4,255
Int'l Conference on Historic Canals	9,041	-0-
Cost of Goods Sold	806	719
Disposal of Assets	<u>86</u>	<u>-0-</u>
TOTAL EXPENSE	25,327	14,400

EXCESS OF INCOME OVER EXPENSE:	\$ 1,789	\$ 1,693
--------------------------------	----------	----------

1993 PROGRAM NOTES
FROM KEN ROLLINS

VIP PROGRAM

Joan Paull, after 10 years of nationally recognized leadership in Volunteers-in-the Parks (VIP) programs realizes that she needs more time for her many other activities. Kid you not, her C&O Canal efforts have been recognized by the National Park Service as a model.

Joan's replacement has a big (size 6 or 7) pair of shoes to fill, but, we're sure she has touched her "fairy wand" to a worthy successor. Joane set an effective pattern: every first Saturday of the workable months, caring people meet at the place needing the most attention -- with the thankful blessing of the Park Service. Furthermore, know that working with Joan isn't work at all: It's fun.

Projects usually take place between 9:00 a.m. and 12:00 noon, and participants are welcome for any part of that time. Projects are often followed by a picnic, a lunch at a nearby spot, or some other socialization.

Our program respectfully honors the first Saturday of each month as a time for those who would like to give their personal thanks for the fact that the Canal is there. The VIP coordinator will tell you where.

BICYCLING

Previously programmed one-day bike trips have met with little interest, but the overnight trip in the fall of 1992 was a resounding success (See the December 1992 Towpath issue). On that basis, we propose two trips for 1993.

The spring trip offers a choice of overnight -- with the option of camping or motel -- or participating in either day's ride. We will go from Harpers Ferry to White's Ferry on the first day and from there to Carderock on the next. Shuttling and logistic support will be arranged. Those who prefer not to camp may make motel arrangements in Leesburg about three miles away, and accessible by the ferry "General Jubal Early."

The fall trip will cover the entire Canal in six October days beginning in Cumberland on a Sunday and ending the following Friday. Logistic support will be provided and motels are accessible provided those who need them are willing to make their own reservations and help with shuttles.

Perhaps our one-day bike trips in the past generated little interest because those who like to ride for a day can easily make their own arrangements. In 1992, the Park Service sponsored a series of one-day trips covering the entire Canal. We understand that a similar program will be offered in 1993. Information may be obtained from the C&O Canal

Park Headquarters (301-739-4200).

LEVEL WALKER HIKES

Level Walker hikes invite ALL members -- especially new ones -- to share in the exploration of particular areas. In the past, participants have been a rather small but dedicated group who like to learn about specific points of interest. Scheduling of Level Walker hikes has been difficult to do in advance, and hikes are usually announced in the interim newsletters. The ideal is for a Level Walker to "host" a hike on her/his level. New Level Walkers are not expected to be experts, and they are likely to learn something from those who have been along before. Watch the interim newsletters and subsequent *Along the Towpath* issues for details.

FESTIVALS

At these C&O Canal town festivals, the Association is present to let visitors know who we are and what we do. These festivals include parades, exhibits, arts and crafts, and food. Volunteers who would like to help Rita Bauman staff our booths can enjoy the festivals and boost the Association at the same time. Rita can't have too many helpers. We will participate this year at Cumberland, Williamsport, and Hancock. Let Rita know if you would like to help.

CANOEING

The canoe program follows the pattern of prior years, beginning with the June trip in the Canal from Violette's lock to Great Falls, passing Blockhouse Point, the "William O. Douglas Level," Pennyfield Lock, and Swain's Lock. You're likely to greet the *Canal Clipper* in action as you arrive at the Falls and get to see a "lock-through." This is an ideal occasion to try canoeing if you have not had an opportunity before. All necessary equipment is available and you will be with experienced leaders. All you have to do is show up and bring your own lunch.

CAVEAT: LET COORDINATORS KNOW

As before, we ask that those who are interested in events call coordinators at least a week in advance to let them know. Those who have volunteered their time to accommodate our offerings are entitled to be released from such commitments if there is not enough interest. In other words, don't call at the last minute and expect to be included in something that coordinators have exercised the option to cancel.

Thanks to Ken for making indelible the beauty of the Canal in our hearts and minds.

- - Editor

.

NATURE NOTES

Looking Back on 20 Years as a Park Volunteer

- contributed by Helen L. Johnston

A little more than 20 years ago, I was hobbling around the Great Falls Tavern area on crutches, recovering from a tumble downstairs that left me with a badly broken leg, a broken collar bone, and some broken ribs. (Moral: DON'T FALL DOWN STAIRS!) Gradually, I recovered the ability to maneuver without crutches. About the same time I retired from the Public Health Service.

Free from job demands, it was possible to continue visiting the Great Falls Tavern area where I had become acquainted with Jack Sanderson, Lee Struble, John Beck, Russ Brown, and Donald Marbury. Jack had a never-ending store of canal-days stories, including tales about the Civil War. John and Russ traded notes about current bird or wildflower observations with me. And, Donald Marbury proved to be a keen observer with his own reports on recent sightings including wild turkeys and deer.

Lee Struble originally proposed that I become a volunteer nature walk leader. About the same time she had enlisted Betty Henson for spring wildflower walks. She had also been talking persuasively with some Potomac residents about forming "Friends of the Tavern." Through her efforts with the "Friends," the Tavern was repaired and the garden was established with its brick patio and white wooden fence. At the same time some members of the "Friends" made costumes of the late 1800's. Unfortunately, these were worn only on a few special occasions. Staffing the Tavern with volunteers in costume never became a part of the Tavern's routine.

When Lee proposed that I lead nature walks I told her I didn't know enough. I had had 1½ years of college-level botany and was an avid bird watcher, having profited from the teaching of Donald E. McHenry and other Park naturalists. Still I felt like a rank amateur. Nevertheless, Lee was persuasive and said she would help me get started.

At first we called the nature walk series "Grab-Bag Walks." We didn't want to confine ourselves to a single interest such as wildflowers or birds. There were plenty of other things to observe including snakes (Russ Brown had a collection of about a dozen different kinds of local snakes that he displayed to Park visitors from time to time), trees, mosses and lichens, rocks, butterflies, remains from gold-mining, The list was never-ending.

Within a short time the name was changed to "Sights and Sounds of the Seasons" and the walks were put on a year round schedule with half in the middle of the week and half on weekends. We thought that other retirees would enjoy

the relative peace to be found in the Park in the middle of the week compared with the weekend distraction of crowds, especially in good weather, when the Towpath was likely to swarm with people.

In a couple of years, Betty Bushell also retired from the Public Health Service. She had already been joining some of the weekend walks. Betty and I talked with Betty Henson about the possibility of the three of us joining forces and have enjoyed sharing sociability and nature lore with others ever since.

At first we scouted every walk before the scheduled date. Eventually, that proved impractical because of weather changes and the possibility that the planned walk might be too strenuous for some of the people who turned out. Also, the three of us became much more familiar with what we would be likely to see in different seasons not only along the Towpath, but also on the gold mine tract and elsewhere in the Park. Betty Hensen, especially, has an uncanny memory for precise location of a rare plant.

How *boring* might be the reaction of some to the idea of revisiting the same area not just two or three but *50 times* every year. To close observers, the place is never twice the same. Shaped by the change of seasons, weather, and an ever-changing river, the place is different each time we visit. Each visit produces its own new wonders, as well as the chance of renewing acquaintance with wonders from the past.

The walks vary in length from about 2 to 5 miles. The miles travelled in a year total a little more than 100. In 20 years, the distance adds up to more than 2,000 miles, a figure that could be doubled, especially if scouting and other extra trips in the area were considered. In addition, all three leaders frequently walk in other areas of the Park and each is a Level Walker, either in the Great Falls area or elsewhere, under the Canal Association's Level Walker program.

A hard core of about a dozen people return to the Park many times in a year for "Sights and Sounds" walks. Others, especially those from far-away states and foreign countries, may come only once. The number of participants for a single walk range from fewer than 10 to more than 50. Occasionally, the Park Service staff assists the three "Sights and Sounds" leaders when the crowd unusually large.

Over the years, participants have included Boy Scouts, Girl Scouts, school groups, church groups, teenagers from a juvenile authority, men from a drug rehabilitation center with their "keepers," teenagers from the School Without Walls, mentally handicapped "children" from their teens to their twenties, and visitors from other states and foreign countries. In the fall of 1992, we had 24 French-speaking teenagers with three English-speaking adults from a Caribbean island. On the first 1993 walk we had three visitors from Taiwan. People of all ages come, including

NATURE NOTES - continued

babies in backpacks and senior citizens. Usually we get together for a brown bag lunch in the Tavern or in the garden after each walk.

Frequently, we receive letters from walk participants. One adult wrote: "I had little need to consult my botany books after my return home. You already supplied all the answers!" A Japanese visitor reflected on his experience: "Working in a huge city like Tokyo, I miss the rich green land of Virginia and Maryland..." A local Girl Scout leader wrote: "In the days of instant gratification, television, King's Dominion, and Disney World, it's a little difficult to compete. However, it is so important for children to appreciate the truly natural miracles in this world. Thank you again for encouraging this..."

Letters from children are especially interesting. One child wrote: "Thank you for taking us on the trip through the woods. I liked to learn about all the leaves. It was very fun. I would like to come there with my family sometime." Another wrote: "...I was the one that called the beach (Beech) tree leaves dried potoe (potato) chips. I mostly liked what you told us about the gold digging." Still another child, too young to write in words, drew a picture for me. When I asked her about her picture, she said, "That's the mountain we climbed!" Finally a letter from a cub master of a Sterling Park, Virginia scout trip expressed appreciation on behalf of the 52 Cub Scouts, parents, and other family members who came on one Saturday walk. According to the cub master, the 8- to 10-year old boys described their visit to the Park for a once-a-year outing as a "lot of fun and 'really neat'."

With such responses, is it any wonder that the "Sights and Sounds" leaders are all ready for another twenty years and a couple of thousand miles?

- - Helen Louise Johnston

★ Note: "Sights and Sounds of the Seasons" walks are scheduled four times monthly under Park Service auspices. Usually they open with a brief slide presentation indicating current observations along the Canal and in the woods. Meet the leaders at 10 a.m. at Great Falls Tavern on the first and last Wednesday and Saturday each month of the year. All three leaders (Betty Bushell, Betty Henson, and Helen Johnston) are long-time Level Walkers and members of the C&O Canal Association.

• • • • •

ASSOCIATION RECEIVES JACK DURHAM'S ARCHIVAL COLLECTION

When smiling Dave Johnson asked me long ago to chair the Archives Committee, I accepted the assignment eagerly. I thought it would be an interesting thing to do, an opportunity to peer into the Association's history, and to learn more about the founding fathers. Since then, historical facts have emerged from the correspondence, old publications, newspaper clippings, other documents, and photographs collected by old-timers. Clearly, Association members who save such relics like to store them in damp cellars, and Jack Durham was no exception. Recently, his daughter Nancy Durham Robinson gave to us his collection--about 1200 documents and many old photographs. Each time I open a Durham file, I am engulfed with a musty cloud (I'm allergic to mold. Smiling Dave didn't mention this occupational hazard.) But, eagerly I read these papers, which are a treasure trove of Association history, and which I am recording in an inventory. Proper collation, analysis and storage will have to await the day when we have a home for the archives, a place where the material can be spread out and worked on, and where the collection can be properly stored.

Jack Durham was a founding father. He was closely involved in organizing the 1954 hike. He served as a charter member of both the C&O Canal Committee founded in 1954 and the Association established in 1957. He held every office in our organization. His papers include rich material pertaining to the 1954 hike and to the Association's organization and first years. I believe these documents will add immeasurably to our knowledge.

Many interesting and curious vignettes emerge in these papers:

--The Association's members were men until at least through 1960. I hope before I'm through to discover who were the first female interlopers to insinuate themselves into this all-male club.

--Durham used a clipping service to provide news stories pertaining to the 1954 hike. As a result we have what is probably a complete journalistic record conveyed on a daily basis in the two Washington newspapers, THE BALTIMORE SUN and THE NEW YORK TIMES, but also in items in papers from Boston to San Francisco, including many places in between.

--Organizers of the first reunion hikes devoted much time to meticulous planning for these affairs, including attention to the smallest details. The files show eight letters concerning one matter, how Jack Pearmain would get from Washington to Fort Frederick after he arrived by train from Boston,

including a missive from Justice Douglas offering his solution to this weighty problem.

--How did the Association get its name? In a letter dated April 12, 1957, Justice Douglass asked Smith Brookhart, a 1954 hiker and Washington attorney to prepare articles of incorporation and by-laws for an organization to succeed the loosely organized C&O Canal Committee. The Justice suggested the name "C&O Canal Association."

--Brookhart, who dutifully adopted the name "C&O Canal Association," drew up the papers as requested by the Justice and five days later produced the by-laws and the articles of incorporation. The by-laws gave the Association's principal office address as 1500 K Street NW in Washington, where Brookhart had his law chambers. The document went on to say the organization "shall have offices at such other places, anywhere in the world, as the Board of Directors may direct." (I'm still hoping to find correspondence addressed to or from a C&O component in, say, Bangkok or perhaps Tanna Tuva.)

☞According to Brookhart's by-laws, the Association's membership would be the participants in the '54 hike. These regular members would, by vote, admit honorary members.

☞Unlike today's annual election by the membership, the 1957 by-laws called for Association officers to be appointed by the Board.

☞The 1950's were the good old days. According to Brookhart's by-laws, any officer, except the president and vice president could be paid compensation for his services as authorized by the Board. Eat your hearts out, secretary, treasurer and information officer.

☞These first by-laws could be amended by the Board or by the membership at any Association meeting. Today only the members can ratify an amendment.

☞After the 3rd annual reunion hike in 1957, hikers enjoyed a dinner at the Hilltop House in Harpers Ferry for \$1.50 each. They were permitted to spend the night in the hotel for \$1.00 if they provided their own bedding.

☞In 1958, the scheme for an advisory commission was suggested in a proposal by Orville Crowder, then the Association's secretary. He called for representatives from the contiguous Maryland counties and the District of Columbia as well as at-

large members to provide board expertise to the body.

☞In 1958, Maryland made a determined effort to acquire the C&O Canal when its legislature sought to enact Resolution 8, which would provide funding to purchase this property. The state would have divided up the land among parks, industrial users and sale to private parties. A strong effort by the newly formed Williamsport C&O Canal Club, which mounted a massive propaganda campaign against Resolution 8, was successful in winning wide support, especially in the western Maryland counties, resulting in this measures defeat.

☞In May 1966, the Douglas Reunion hike attracted 500 hikers.

☞Back in 1938, the C&O Canal Park was purchased with PWA funds.

Aside from the many valuable documents in Durham's collection pertaining to the Association's founding and early years, other papers reveal his broad involvement in environmental and preservation matters. In particular, he was a leader in establishing and organizing the annual Rock Creek Park Day ceremonies held in the 1950's and 1960's. Many documents detail his involvement in this activity. In addition, correspondence reveals his long, close friendship with Benton MacKaye, the noted American conservationist and forester who founded the Appalachian Trail. Unfortunately, Durham's letters in this exchange are lost to us, but MacKaye's words addressed to Durham describe the wide-ranging environmental and preservation concerns shared by these two men. About 200 letters from MacKaye to Durham cover many issues and constitute a valuable insight into MacKaye's thinking.

I hope someday to see this material, as well as other collections in our possession, properly collated and stored in order to make these archives available to the membership and to scholars and other interested persons. We will not be able to do this until the Association acquires a place with room enough to work on this material and properly house it. Meanwhile, damp cellars remain our repositories.

- - Hal Larsen

As you read, Hal is Chairman of the Archives Committee. Thanks for this informative article, Hal.

• • • • •

And, Speaking of informative articles, I think you will find the following commentary by Paul Rosa, new member, attorney, and C&O Canal enthusiast to be poignant.....Editor

A PRESERVATION STRATEGY FOR THE POTOMAC

Triggered by controversy over tree cutting on the Virginia banks of the Potomac, the question of balance between private property and the public interest once again looms in the foreground. This seeming dichotomy, when viewed from a different perspective, presents a serendipitous opportunity for the convergence of common interests. Expanding the vision of the C&O Canal National Historical Park to encompass a preservation strategy for the Potomac River valley's scenic landscape can serve the public good while accommodating and enhancing private property interests.

It is ironic that the focal point of the current controversy is the view from the point dedicated to the memory of Frederick Law Olmsted. Olmsted's genius pioneered the preservation of open spaces in America. His protégé, Charles Eliot, in the 1890's championed conserving Boston's riverbanks and park lands. Eliot's unswerving dedication led to the creation of the Massachusetts Trustees of Public Reservations and Boston's Metropolitan Park Commission. Building on their legacy, Benton MacKaye and Myron Avery conceived and implemented the Appalachian Trail.

Through the breadth of vision of this linear procession of Harvard men, coupled with vigorous efforts spearheaded by Justice William O. Douglas to forever secure the C&O Canal for lovers of Nature, one can now walk by a continuous footpath from Maryland, down Rock Creek through the District of Columbia, follow the Potomac west, and head south to Georgia or north to Maine. In fact, MacKaye's 1921 plan for the Appalachian Trail specifically called for tapping urban populations through lateral feeders, a role the C&O Canal now fulfills, joining the Appalachian Trail at Lock 31 near Harper's Ferry.

But the Potomac park scheme remains incomplete. It lacks that unity and harmony of expression, that certain wholeness that stimulates the imagination. Protected lands encompass only a narrow swath on the Maryland side of this natural pathway, the opposite bank remaining largely unprotected. Even on the Maryland side, powerplants, water treatment facilities and diverse commercial and residential developments dot the landscape. The progress of civilization produces a patchwork of properties on both banks which, bit by bit, consume the sylvan character of this gentle river.

Yet by great good fortune, many wilderness vistas still remain. "Our lives need the relief of such a background," said Thoreau. Indeed the human spirit perpetually seeks the solace of Nature for refreshment from the pressures of modern urban life. Such opportunities for beholding natural

beauty will certainly be needed and prized by successive generations.

The problem with the Potomac plan is that it protects only the canal right-of-way, not the tranquility of the scene. The lack of continuity and completeness compromises the sensation of a wilderness of indefinite extent. Absent public control of the key elements, perceptions of an agreeable landscape will continue to shrink.

In conceptualizing the potential of a unified preservation strategy, one must take into account the unique character of the Potomac lands. Unlike conventional public domains, the C&O Canal is a linear park whose central features are the commercial artifacts of the canal works. But, as Thoreau correctly observed, "all works pass directly out of the hands of the architect into the hands of Nature, to be perfected." The passage of time has subtly worked its cure, enhancing the beauty of these structures by blending them into the background. By helping, not forcing, Nature we can stimulate this process, turning the towpath into a verdant necklace, stringing together the parks sprinkled along the valley.

Unlike the manicured town square, the park we speak of here fits Eliot's definition of a country park, namely "lands intended and appropriated for the recreation of the people by means of their rural, sylvan, and natural scenery and character." Eliot noted "for the purposes of a country park a tract of land upon which Nature herself has framed a scene of beauty is always to be desired." Wildness, not neatness, is called for.

Since the provision and preservation of scenery is the purpose to be held in view, principles enunciated by Olmsted and Eliot tell us that our present park is not well-bounded. "The boundaries of the proposed reservation should, if possible, be established to include all lands belonging to the same topographical unit, and exhibiting the type of scenery characteristic of each reservation," said Olmsted, noting that "a public domain is not well bounded" if it includes only half a hill or one shore of a river or pond. He found it unfortunate that public authorities typically acquired existing parcels without regard to these precepts.

At the outset we must envision the ends or purposes to be achieved and constantly aim to make all that we do contribute to the effect of the whole. By a series of well-conceived tactical advances we can steadily progress toward a strategic preservation objective, making the towpath and the Potomac the central spine supporting a scenic network.

Obviously a pristine wilderness cannot be preserved in the Potomac valley of today. But the creative user of landscaping, or "planting out" as Eliot called it, can, within a decade, cause industrial eyesores to fade into the background. Coupled with prioritized Congressional earmarking of funds for specific projects, parallel state and

PRESERVATION STRATEGY - continued

local actions, and private efforts for strategic acquisitions, the objective of fashioning a pleasing and refreshing landscape for all to enjoy will gradually move into the foreground. Each step will lead us further and further down the path of preservation.

This undertaking will take money, time and, most importantly, understanding. By availing ourselves of a strong public sentiment already in existence we can bring about that understanding. In time adjacent property owners will come to see that this preservation scheme will enhance their property values, and that the whole community will reap a profit in the end.

Let us not allow our window of opportunity to slide shut. Contemplating his final arrangements for the posthumous publication of his writings, Thoreau remarked to a friend "you know, it's respectable to leave an estate to one's friends." Cherokee wisdom projects the consequences of acts seven generations into the future. If we, as trustees of this treasure, could consult those who come a century and a half after us, could we speak well of our legacy and say with confidence that we did the right thing?

- - Paul M. Rosa



NEW MEMBER HIKE

On Saturday morning January 16, fifteen of us joined a new member hike at Carderock, led by President Dave Johnson. Before we headed off, we introduced ourselves around as Natalie and Murray Felsher, Orrin Long, Dave Johnson, John Lindt, Nancy Hughes, Ruth Echil, Shirley Edwards, Phil Rockwell, Ginny Garretson, Craig Zane, Sharon Freedman, Leslie and Earl McFarland, and Anne Wright. It was cold, but quite mitigated by stillness as we walked down to Lock 10. We stopped several times at particular points to hear interesting Canal stories and historical facts from Dave. While thirteen of us were walking, our gracious hosts Leslie and Earl were back at the Carderock pavilion preparing hot cider and cutting pieces of scrumptious lemon and chocolate cakes. It was a great introduction for new folks and the rest of us had a good time as well. Thank you Leslie, Earl and Dave.

- - Anne Wright



Dave Johnson talks with members. Photo courtesy Anne Wright.

.....

Along the Towpath is published in March, June, September, and December by the C & O Canal Association; P.O.Box 366, Glen Echo, MD 20812-0366. Articles for publication should be received by the 15th of the month prior to publication.

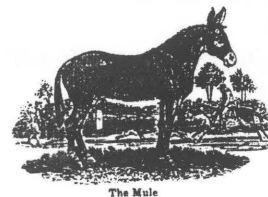
Please mail articles to:

Robert C. Perry
12713 Knightsbridge Drive
Woodbridge, Virginia 22192

✓ ✓ Editor

See you, *Along the Towpath*. RCP

.....



C & O CANAL ASSOCIATION
1993-1994 Association Officers

President:

David M. Johnson
9211 Wadsworth Dr.
Bethesda, MD 20817
301-530-7473

First Vice President:

Harold A. Larsen
1314 Kurtz Rd.
McLean, VA 22101
703-356-1809

Second VP & Level Walker Chairperson:

Keith Kridenoff
1725 Red Oak Road
Baltimore, MD 21234
410-661-8285

Secretary

Norma Hendrickson
P.O. Bos 7025
Silver Spring, MD 20907
301-565-9421

Treasurer

William J. Evans
3813 Juniper Rd.
Baltimore, MD 21218
301-243-6315

Information Officer

Helen Shaw
8721 Burning Tree Rd.
Bethesda, MD 20817
301-365-1933

Board of Directors: (Terms expire in 1996) Charles Ayers, Tom Conlon, Nancy Long, Ken Rollins, Elizabeth Scott. (Terms expire in 1995) John Fondersmith, Sharon Freedman, Orrin Long, James Millar, Douglas Mussen. (Terms expire in 1994) Ralph H. Donnelly, John C. Frye, Carl Linden, Linda Perry, Lyman Stucker.

Editorial Staff

Editor:

Robert C. Perry
12713 Knightsbridge Dr.
Woodbridge, VA 22192
703-590-5568

Production and Distribution: Susan "Butch" Henley, Dave Johnson, Ellen Holway

• • • • •

LOST CORNER, VIRGINIA, AND THE C&O CANAL

In the summer of 1941, when the Monocacy River was low from a drought, Walker R. Smith delivered some sacks of grain apportioned from the Smith family grist mill in Doubs,

Maryland, to Harry Talbott. Talbott met Smith at the C&O Canal aqueduct where the Monocacy River empties into the Potomac River.

While wheeling the sacks of grain across the aqueduct, Smith was distracted by the remains of a barge on the eastern bank of the Monocacy River just (sic) above the aqueduct. A lifelong photographer, Smith snapped a photograph of the barge's skeleton and immediately questioned Talbott, who at the time was in his eighties, of its origin.

Talbott had lived along the canal all of his life and described the activity of this particular barge. He stated that the barge began from the Virginia side of the Potomac /River at a small community called Lost Corner in Loudoun County, Virginia. Lost Corner was surrounded by farms.

Sacks of grain were loaded on the barge. The barge was floated across the Potomac River and skillfully maneuvered into the mouth of the Monocacy River.

While the barge was anchored to the eastern shore of the Monocacy River just above the aqueduct, the men of the barge shouldered the sacks of grain up the river bank and unloaded their stock into the grain house along the canal. This was obviously a strenuous task. Carried by the canal barges, the grain made its way to Georgetown to be manufactured into flour.



Photo, made by W.R. Smith in 1941, of the remaining keel and ribs of canal barge just above the C&O Aqueduct across the Monocacy River.

- - Christopher Gillis

Reprinted from *American Canals, the Bulletin of the American Canal Society* with the permission of William E.

ON THE LEVEL...notes and news on the Level Walker Program

by Karen Gray, 1992-Feb. 1993 Level Walker Chair

KEITH KRIDENOFF was elected on March 6 as the new 2nd Vice President and Level Walker Chair. An active level walker, Keith brings valuable computer skills to this position as well as considerable experience along the canal and in other C&O Canal Association volunteer activities. I am delighted to be able to pass on this assignment to someone so qualified and interested. Keith's address and phone are:

1725 Red Oak Road, Baltimore, MD 21234; 410-661-8285.

I WOULD LIKE TO THANK all the C&O Canal Association members who have worked and reported as level walkers during my three years as chair. The program grew as the membership grew during these years and became increasingly effective thanks to your contribution of time, effort and resources.

THE LIST OF ACTIVE LEVEL WALKERS AND THEIR CURRENT ASSIGNMENTS AS OF FEBRUARY 15, 1993 follows the excerpts from the November to January reports. Please contact Keith Kridenoff, the new Level Walker chair, if there are errors. Inactive level walkers will be placed back on the active list upon receipt of a recent level walk report.

For those considering volunteering as a level walker, please note especially those levels with only one walker assigned. However as some levels need more frequent visits than others and many walkers on a level don't necessarily mean frequent walks and reports, new walkers are always welcome whatever their preferences.

LEVEL REPORTS FOR THE QUARTER NOVEMBER 92 - JANUARY 93

Includes reports received by the TOWPATH deadline only. NOTE: MAY 7 is the DEADLINE for FEBRUARY TO APRIL reports included in the Summer issue.

REPORTS -

01 0.0- 2.3

Tide Lock-Boat Incline

Carl Linden (1/24): Graffiti blots out information on the aqueduct abutment sign. Mudholes and puddles on towpath show need for re-grading. Leak thru retaining wall, W. side of Key Bridge abutment.

03 5.0- 7.5

L.5-Cabin John

Howard Rosen (Nov.), John & Joan Wilson (12/9-13): Dec. 10 windstorm left 2 trees down across towpath that NPS removed. Parking lot at Lock 7 closed due to parkway construction equipment storage use.

04 7.5- 9.4

Cabin John-L.14

Charles Bookman (11/19), Howard Rosen (Nov.), Carolyn Reeder (12/6, 1/17): A new log jam is already forming on the upstream side of the Cabin John Creek culvert. New loose stones

in Lock 10 and 13. Lock 9 sign still missing. (Cont.) Upstream end of lock 11 repaired. New bike ramps at ends of Lock 8 footbridge. Towpath erosion increasing under the beltway bridge and other points along level. Much beaver damage above locks 8, 10 and 11 and a new lodge has been built.

06 12.3- 14.3

Cropley-Gt.Falls

Helen Johnston (11/25): Goldmine Tract trails need water bars. Much illegal parking on road when parking areas at the Tavern & Angler's Inn filled. A small copperhead seen on towpath near Carderock. Commorants and coots seen on river.

08 16.6- 19.6

Swains-Pennyfield

Paul R. Davis, Jr. (11/11, 12/31, 1/16): Some holes on towpath needing fill. New beaver cuttings.

11 25.0- 27.2

10Ft.Is.-Sycamore Landing

Sharon Freedman (11/28): Serious holes in towpath, mile 26.7. Three riders on horseback encountered.

12 27.2- 30.8

Sycamore Land.-Edwards Fy.

Stephen Pollock (11/16, 12/24, 1/20): New "No Hunting" signs at Sycamore Landing in November.

13 30.8- 33.2

Edwards Fy.-Harrison Is.

Bert Grose (11/11, 1/20), Don Groelsema (1/1): Beaver extremely active along this level, completing a dam at mile 32.8 that has formed a pool to MP 32. New lodge on berm side at 32.5. Trees a foot or more in diameter felled or partially cut. Upstream wing wall of lock at Edward's ferry deteriorating.

14 33.2- 35.5

Harrison Is.-Whites Fy.

Betty Henson with Betty Bushell, Pat Schindler & Herb Madison (11/20), Herb Madison (1/24): Sofa & tire dumped on berm bank by road. Reconstruction of open stone culvert at Whites Ferry is completed. Hole in canal over culvert at 34.6.

15 35.5- 39.4

Whites Fy.-Woods L.

Herbert Madison (1/31): Beverage cans included some from Singapore. Usual clam gatherers were absent. Pulled a discarded baby carriage from canal & dragged to Whites Fy.

16 39.4- 42.2

Woods L.-Monocacy

Steve Dean (12/19, 12/25, 1/30): River high-water debris includes approximately 25 barrels. (Cont.) Signs of beaver above PEPco plant crossover. Observed 3 deer swimming across the Monocacy. Towpath shows sign of regular horseback riders. Monocacy Aqueduct area sign

reported missing in 1/30 report. Tree from canal bed and others removed from area.

18 44.6- 48.2

Nolands Fy.-Pt.of Rocks

Marlow Madeoy (1/2), Paul Redmer (1/19): Muddy, poorly drained areas of towpath. Encountered three policewomen who were searching for missing woman.

19 48.2- 51.5

Pt.of Rocks-Catoctin Aq.

Jack & Pat Cook (12/27), Lyman Stucker (1/7), Lawrence Thayer (1/31): Sink hole in culvert. Muddy spots on towpath between mile 49 and 51 due to poor drainage. Bald eagle at Pt.of Rocks 1/31.

26 67.0- 69.4

Mountain L.-Antietam Aq.

Robert & Martina Stevenson (1/6): Removed 13 tires from prism.

27 69.4- 72.8

Antietam-Shepherdstown

Harry Robinson (1/6): Collected 5 bags of garbage.

30 76.7- 79.4

Snyders Landing-L.40

Paul Redmer (1/6): Much litter on ledge above Snyders Landing.

31 79.4- 81.6

L.40-Marsh Run Culvert

Barry & Debbie Kistler (12/25), Paul Redmer (1/6): 12/11 windstorm brought down many dead trees and limbs. Found camera on towpath.

33 84.4- 88.1

Dam 4-McMahons/Chas.Mill

Nick & Peggy Weber (11/8): Parking lot at Dam 4 repaired and road to Big Slackwater recreation area.

34 88.1- 91.0

McM./Chas.Mill-Foremans Fy

Tom & Linda Perry (11/7): Old plank that scaled cliffs at 88.4 strewn about.

36 93.0- 94.4

L.43-Falling Waters

Mary Gravalos (12/2), Bryon Scott Line (1/17): "For Sale" sign on berm side at approximately mile 93.4. Signs of underbrush clearing.

38 99.3-102.3

Williamsport-High Rock Q.

Kevin Holloway & Vanessa Cieslak (1/23): Rewatering construction continues. Beavers active M.101.5.

41 106.8-108.6

Dam 5-Four Locks

Paul Rosa (1/2): Found old whiskey bottle without factory markings and pottery shards.

42 108.6-110.4

Four Locks-McCoys Fy.

John Ziegler (11/15): Muddy and rutted area of towpath upstream from Four Locks continues to deteriorate. Ranger indicated NPS staff would work on area as soon as time could be scheduled.

50 130.0-134.1

L.53-Dam 6

Gren Whitman & Janice Plotczyk: Signs of beaver felling and chewing on trees. Interpretive sign missing at Round Hill Cement Mill.

51 134.1-136.6

Dam 6-Sideling Hill Aq.

John Popenoe (12/2): Bridge work at mouth of Polly Pond completed.

52 136.6-140.9

Sideling Hill-Ltl.Orleans

Kent & Marcia Minichiello (11/6), Michael & Shelley Cotter (1/2-2/7): Vegetation growing from between 15 Mile Creek Aqueduct stones. Tremendous amount of fallen trees and

branches in the area of the 15 Mile Creek park. Numerous trees cut up and stacked neatly beside towpath between 136.6 & 138.6.

65 173.4-175.5

Spring Gap-North Branch

Jeanine & Dward Moore (11/28): Towpath for about 1/2 length of the level resurfaced--some of it not very smoothly finished. Lift lock 73 missing. Lock 72 lock house repainted during summer.

66 175.5-177.7

North Branch-Mexico Farms

Tom Conlon (1/2): Beaver cuttings between 178 & 179. New "No Hunting" NPS boundary markers well located. Federal prison construction visible through leafless trees. Collection point for sewer waste water from Mexico Farms, prison & industries now completed.

67 177.7-180.7

Mexico Farms-Evitts Cr.Aq.

Tom Conlon (1/2): Top plywood panels on outside north wall of Evitts Cr. aqueduct are rotting.

LEVEL ASSIGNMENTS AS OF 2/15/93:

01 0.0- 2.3

Tidal Lock - Old Boat Incline

Yusef & Khaddija El-Amin

Carl Linden

02 2.3- 5.0

Old Boat Incline - Lock 5

Margot Foster

James & Gera Millar

03 5.0- 7.5

Lock 5 - Cabin John Cr.culvert

John Butler

Dorothy Johnson

Howard & Helen Rosen

Jim & Joan Wilson

04 7.5- 9.4
Cabin John Cr.culvert - Lock
14

Charles Bookman
Carolyn Reeder
Lori Rieckelman
Howard & Helen Rosen

05 9.4- 12.3
Lock 14 - Cropley/canal
bridge

Theresa Haddy
Jim & Gera Millar
L.D. Pletcher
John Stalik
Patsy Woods

06 12.3- 14.3
Cropley - Great Falls/Lock
20

Helen Johnston
Donald & Helen Shaw
Pat Unger

07 14.3- 16.6
Gt. Falls/Lock 20 -
Swains/Lock 21

Bob Boegel
Gene Dunbar
Jack Francis
Alice & George Kinter

08 16.6- 19.6
Swains/Lock 21 -
Pennyfield/Lock 22

Paul Davis
Nadir Sryo

09 19.6- 22.8
Pennyfield/L. 22 - Seneca
Aqueduct

Dawn Carlisle
Janet Lanman
Betty Sanders

10 22.8- 25.0
Seneca Aqueduct - MP
25/Tenfoot Is.

Leslie Meil
Michael Werth

11 25.0- 27.2
MP 25 - Sycamore Landing

Lois Clark
Sharon Freedman
Harold Learned

12 27.2- 30.8
Sycamore Landing - Edwards
Ferry

Teresa Cummings/Dave
Hoerauf
Stephen Pollock

13 30.8- 33.0
Edwards Ferry/Lock 25 -
Milepost 33

Donald Groelsema
Bert Grose

14 33.0- 35.5
Milepost 33 - Whites Ferry

Betty Bushel
Christine Calvelli
Betty Henson
Jake Kalin
Herbert Madison

Pat Pickering
Pat Schindler

15 35.5- 39.4
Whites Ferry - Woods/Lock
26

Brian & Bonnie Blades
Betty Bushell
Betty Henson
Herbert Madison
Pat Schindler
Robert & Lorrie Teates

16 39.4- 42.2
Woods/Lock 26 - Monocacy
Aqueduct

Chris & C.H. Breedlove
Michael Crane
Steve Dean
Bill Evans

17 42.2- 44.6
Monocacy Aqueduct -
Nolands Ferry

Robert Adler
Bill Evans
Win & Alan Fox
Mary Gravalos

18 44.6- 48.2
Nolands Ferry - Pt.of Rocks
Norma Hendrickson

Marlow Madeoy
Nancy Matthews
Mary Olczak [+Troup 2461]
Paul Redmer

19 48.2- 51.5
Pt.of Rocks - Catoctin
Aqueduct

John & Susan Anderson
John Cook
Lyman Stucker
Laurence Thayer

20 51.5- 55.0
Catoctin Aqueduct -
Brunswick

Sylvia Diss
Dianne Pickar

21 55.0- 58.0
Brunswick - Weaverton/Lock
31

Dave Johnson

22 58.0- 60.7
Weaverton/Lock 31 -
Harpers Ferry
Chuck & Jean Francis
Gill Hill/Carol Galaty
Arthur & Larue Stier

23 60.7- 62.3
Harpers Ferry/Lock 33 -
Dam 3
Larry & Sue Anderson
Susan Hook
Bob & Eileen Rabson
Mike Reges
Carol Tischhauser [G]

24 62.3- 65.1
Dam 3 - Dargan Quarry
Mike Vidmar

25 65.1- 67.0
Dargan Quarry -
Mountain/Lock 37
F. Ruth Dickie
Norman & Cheryl Thomas

26 67.0- 69.4
Mountain/Lk. 37 - Antietam
Aqueduct
Erick Clement
George Hilley
Dick Metcalf/Brenneke
family
Robert Stevenson

27 69.4- 72.8
Antietam Aqueduct -
Shepherdstown
Harry Robinson
Ken Rollins

28 72.8- 74.0
Shepherdstown/Lock 38 -
Lock 39
Mary Baugher
George Camplair
John Frye

29 74.0- 76.7
Lock 39 - Snyders Landing
Marshall Grotenhuis

30 76.7- 79.4
Snyders Landing - Lock 40
Donna Colombel
Harold Cramer, Jr. + family

31 79.4- 81.6
Lock 40 - Marsh Run Culvert
Harold Cramer, Jr. + family
Deborah & Barry Kistler

32 81.6- 84.4
Marsh Run Culvert - Dam 4
Beejay Myers
Edith Wilkerson

33 84.4- 88.1
Dam 4 - McMahons/Charles
Mill
Nick & Peggy Weber

34 88.1- 91.0
McMahons Mill - Opequon
Jct.HBO
Tom & Linda Perry

35 91.0- 93.0
Opequon Jct.HBO - Lock 43
Bryon Scott Line
Ruth & Tack Swann

36 93.0- 94.4
Lock 43 - Falling Waters
Bryon Scott Line

37 94.4- 99.3
Falling Waters - Williams-
port/Lk.44
Ellen Holway

38 99.3-102.3
Williamsport - High Rock
Quarry
Richard Brown, Jr.
Kevin Holloway/Vanessa
Cieslak

Melvin Kaplan

39 102.3-105.0
High Rock Quarry - Old
Bridge piers
Dolly Deiter

40 105.0-106.8
Old Nettle Bridge piers -
Dam 5
Edith Poetzschke

41 106.8-108.6
Dam 5 - Four Locks/Lock 47
Paul Rosa

Ginny Small

42 108.6-110.4
Four Locks - McCoys Ferry
Tim Kernan
John Ziegler

43 110.4-112.4
McCoys Ferry - Fort
Frederick
Sonny DeForge

Karen Gray

44 112.4-114.5
Fort Frederick - Ernestville
Marlyn Heintzelman
Hal & Jane Larsen

45 114.5-116.0
Ernestville - Licking Cr.
Aqueduct
James Doherty

46 116.0-120.0
Licking Cr.Aqueduct - MP
120
David Combs/Maria Vargas

47 120.0-124.1
MP 120/Little Pool - Han-
cock
Jim & Sally Bryant

48 124.1-127.4
Hancock - Round Top Ce-
ment Mill
George & Gail Elser
Fred Seitz

49 127.4-130.0
Round Top Cement Mill -
Lock 53
Dolly Dieter
Mary & Jack Goembel

50 130.0-134.1
Lock 53 - Dam 6
Gren Whitman/Janice
Plotczyk

51 134.1-136.6
Dam 6 - Sideling Hill
Cr.Aqueduct
George A. Perdue
John Popenoe

52 136.6-140.9
Sideling Hill A. -
15Mi.Cr.Aqueduct
Michael & Shelley Cotter
Kent & Marcia Minichiello
George A. Perdue

53 140.9-146.6
15Mi.Cr.Aqueduct - Lock 59
John Wheeler

54 146.6-149.7
Lock 59 - Lock 60
Paul Kovenock

55 149.7-151.2
Lock 60 - Culvert
208/Kasecamp Rd.
Herb Gunther

56 151.2-153.1
Culvert 208/Kasecamp Rd. -
Lock 61
Herb Gunther

57 153.1-154.5
Lock 61 - Lock 63 1/3
Marcie & Ken Campbell

58 154.5-156.2
Lock 63 1/3 - Paw Paw
Judie & Fred Mopsik
John & Ann Wisniewski

59 156.2-159.7
Paw Paw - Culvert/Ltl.Ca-
capon
John Chandler
Robert Stevenson

60 159.7-162.3
Ltl.Cacapon - Town Creek
Aqueduct
Keith Kridenoff

61 162.3-164.8
Town Creek Aqueduct - Lock
68
Mr./Mrs. Charles Ayres

62 164.8-167.0
Lock 68 - Oldtown/Lock 71
Tom Dulz

63 167.0-170.8
Oldtown - Culvert 223/-
Kelly's Rd.
Dave Foley

64 170.8-173.4
Culvert 223 - Spring Gap
Rec. Area
Martha Foley

65 173.4-175.5
Spring Gap - North
Branch/Lock 74
Dward & Jeanine Moore
Mary Twigg

66 175.5-177.7
North Branch - Mexico
Farms
Tom Conlon
John & Rebecca Millar
Jim Sartwell

67 177.7-180.7
Mexico Farms - Evitts
Cr.Aqueduct
Tom Conlon
John & Rebecca Millar
Mary Twigg

68 180.7-182.6
Evitts Cr.Aqueduct - Wiley
Ford
Jack & Marybelle Light

69 182.6-184.5
Wiley Ford Bridge -
Cumberland
Jack & Marybelle Light

Interested in becoming a
Level Walker? Call Keith
Kridenoff, 410-661-8285 in
Baltimore, MD.

.

PARK REORGANIZATION

Superintendent Thomas O. Hobbs recently announced a restructuring of the C&O Canal National Historical Park, which has resulted in realignment of lines of supervision and geographical districts.

Organizationally, the Park has three divisions: Administration; Maintenance; and Interpretation, Resource Management and Visitor Protection.

The Division of Administration, headed by Christine Streng, manages the regular business activities of the park. These functions include personnel management, budget preparation and analysis, purchasing and supply.

The Maintenance Division, headed by Sam May, is responsible for the upkeep and repair of park property and facilities. Geographically, there are five maintenance districts, each under the direction of a foreman. The five maintenance districts are designated as Palisades, Monocacy, Conococheague, Four Locks, and Paw Paw.

The Major organizational changes have occurred in the Division of Interpretation, Resource Management and Visitor Protection. The division is under the direction of Chief Ranger Keith Whisenant. Management of law enforcement and interpretive functions has been divided into two branches. Two additional branches manage the park's resources. The three former districts have been reduced to two - Palisades and Western Maryland - with the dividing boundary at the Monocacy River.

The Visitor Protection Branch is responsible for law enforcement and visitor safety in the park. The branch head, who is also Assistant Chief Ranger, is Kevin Fitzgerald, recently transferred from Everglades National Park. District Rangers are Tom Nash in Palisades and Dwight Stinson in Western Maryland. The Western Maryland District has four sub-districts for patrolling purposes.

Rangers in the Interpretation and Visitor Services Branch staff the visitors centers at Georgetown, Great Falls, Hancock, and Cumberland, operate the mule-drawn canalboats at Great Falls and Georgetown, and develop and lead programs, walks and interpretive events. Gordon Gay is the branch head, and the supervisors are Edie Roudebush in Palisades District and Martin Gallery in Western Maryland.

The Cultural Resource Management branch is headed by historian Susan Winter Frye, who is responsible for preservation of park and canal artifacts, archives, and historic structures.

The Natural Resource Management Branch, headed by Patrick Toops, who recently transferred from Lava Beds National Park, California, oversees the protection of the biological, geologic and other natural resources in the park.

- - Dave Johnson

.....

PRELIMINARY PLANS FOR GEORGETOWN UNIVERSITY ENTRANCE UNVEILED

The Federal Highway Administration has released a number of possible traffic schemes for expansion of the Georgetown University entrance on Canal Road between the Whitehurst Freeway and Foxhall Road. These proposals project varying degrees of impact on the C & O Canal, which lies directly on the other side of Canal Road.

The proposed action involves construction of an intersection or interchange at the Canal Road entrance to Georgetown University. The purpose of the proposed project is to provide a more efficient and safe vehicle access into Georgetown University and relieve traffic conditions in the Georgetown area.

Existing Canal Road between Key Bridge and Foxhall Road is a four-lane roadway, with the lanes in each direction separated by narrow concrete median. No turning movements to and from the eastbound lanes of Canal Road are now possible at the entrance to the University. The proposed project would permit traffic entering and exiting Georgetown University to travel both east and west on Canal Road.

The proposed action is in the earliest stages of development. Eight preliminary alternatives in the form of schematic layouts have been developed to ascertain engineering parameters and feasibility. These range from a signalized intersection to compact interchanges. Two or three of these preliminary alternatives along with the no action alternative will be selected for further engineering study and evaluation in the Environmental Impact Statement.

The potential visual and aesthetic impacts on the C & O Canal, the Potomac River Palisades, and the Georgetown Historic District are of concern. None of the preliminary alternatives appear to involve any horizontal encroachment onto or over the canal; all widening of Canal Road in all of the alternatives appears to be on the University side of the street. However, several alternatives have elevated ramps to cross over the opposing lanes of traffic to enter or exit the University, and these would create visual invasions of the historic scene from the towpath. There

GU ENTRANCE - continued

are also alternatives that would not create these vertical intrusions, by constructing depressed lanes or an at-grade intersection.

The proposed project will be completed in accordance with the requirements of the National Environmental Policy Act as delineated in U. S. Council on Environmental Quality regulations. The regulations outline a process in which governmental review agencies, interested parties and citizens are involved in project decision making. As work progresses, a Draft Environmental Impact Statement will be prepared to assess the impacts of proposed project alternatives. After the Draft EIS is published and circulated to government agencies, interested parties, and citizens for review, a public hearing will be held to present information and receive comments on the proposed action, alternatives, and environmental impacts.

It is anticipated that the Draft EIS will be published in autumn 1993. The public hearing will be held in late 1993 or early 1994.

.....

NOTES FROM ASSOCIATION BOARD OF DIRECTORS MEETINGS

The Association's Board of Directors held regular bimonthly meetings on December 6, 1992, at Glen Echo, and February 7, 1993, at Williamsport.

Superintendent Hobbs attended the December meeting and discussed a wide range of park issues with the Board. Included in the briefing were status reports on Park Service budget, rewatering, repairs to Dams 4 and 5, Widewater, the reorganization of the park staff, retention rights for in-holdings, and the Vail Agenda.

The Treasurer presented the proposed Association budget for 1993. The Budget Committee recommended an operating plan of \$13, 185, which was approved by the Board. The Board also approved a motion that a portion of the surplus realized from the 1992 International Conference be passed on to next year's conference, just as we had received a donation from the sponsors of the 1991 conference. The Board also approved the procurement of data processing equipment and software for our membership records and mailing labels, as recommended by the special committee appointed to study this issue.

At the February meeting, it was announced that the computer equipment had been acquired. The Board amended the budget to amortize the cost over a five-year

period. The Board also authorized funds to obtain a fidelity bond covering the treasurer.

The Board discussed the issue of tree cutting on the Virginia Palisades of the Potomac, as reported in the last issue of *ALONG THE TOWPATH*, and subsequently in *THE WASHINGTON POST*, and considered proposals from Association member Paul Rosa for possible actions. The matter was referred to the Environmental Committee for further study.

The Board also discussed the condition of the towpath at Widewater, where the old causeway across the former river channel is seriously deteriorated. The Board reaffirmed its position that the entire towpath below Lock 15 should be restored in an historically accurate way to its condition when the canal was in operation, but endorsed temporary measures to ensure that towpath continuity is maintained and the hazard to public safety is corrected.

The Board considered a request from an Association member that it look into possible action to influence Amtrak to provide checked baggage service at Harpers Ferry and Cumberland, so that towpath cyclists could take their bicycles by train to those points on the canal. Because Amtrak station staffing is an economic issue, based on daily boardings at each station, the Board determined that it would be non-productive to pursue this issue.

.....

FOR BEGINNING CANOEISTS

The Canoe Cruisers Association is offering its 21st year of beginners canoeing instruction during the summer months, May 15 through September 15, 1993. Sessions begin at 6:30 p.m. and end at 8:00 p.m. on Tuesdays at Fletcher's and Thursdays at Swain's Lock. All equipment is provided by the concessionaires and instruction is provided by the Canoe Cruisers. Reservations are not necessary. For additional information call (301-656-3630).

.....

CALENDAR OF UPCOMING EVENTS

<u>Date</u>	<u>Day</u>	<u>Event</u>
Mar 25	Thr	JOINT PRESENTATION OF THE C&O CANAL ASSOCIATION AND THE NATIONAL RAILROAD HISTORICAL ASSOCIATION - 7 p.m. in the Western Maryland Station. Mr. Pat Stakem, a member of both groups, has produced a program entitled "The C & O Canal and the Railroads: Synergy and Competition" which describes the activity of our young nation in developing transportation by wagons, railroads, and canals towards Cumberland. This informative talk should interest everyone who often wonders what else was taking place as the canal was being dug. For further information, contact Doug Mussen (304-788-0850).
Apr 3	Sat	Volunteers in the Park (VIP) DAY - 9:00 a.m. Meet at Riley's Lock, Seneca. Contact Joan Paull (301-384-8584) or Terry Barbot (301-299-3613).
Apr 24	Sat	Douglas Hike - 11:00 a.m. - Oldtown - North Branch Cumberland area. Dinner at the Ali Ghan Shrine Country Club. See details in this issue.
May 1	Sat	VIP Day - Meet at 9:00 a.m. at the Marston Tract to revamp the campsite. Contact Joan Paull (301-384-8584) or Terry Barbot (301-299-3613).
May 15	Sat	NEW MEMBERS CANAL BOAT RIDE - This early-May activity will start at Great Falls Tavern. While the trip is free, there is a fee to get into the Park. New members will be seated first. All are welcome.
May 22/23	Sat/Sun	OVERNIGHT BIKE TRIP - Harpers Ferry to Carderock. Contact Sonny DeForge (301-530-8830) or George Complair (703-573-1728).
May/June		BOTANICAL WALK - This late-May/early-June walk will occur in the Little Orleans area.
June 5	Sat	VIP DAY - Meet at Great Falls Tavern at 9 a.m. to clean the tavern area. Contact Joan Paull (301-384-8584) or Terry Barbot (301-299-3613).
June 5	Sat	CANOE THE CANAL - Violettes Lock to Great Falls. Contact Carl Linden (301-229-2398) or Ken Rollins (804-448-2934).
June 26	Sat	POT LUCK PICNIC - with friends of the Great Falls Tavern. Watch for details.
Jul 3	Sat	VIP Workday - Watch for details.
Jul 10/11	Sat/Sun	CUMBERLAND CANALBOAT FESTIVAL - Contact Rita Bauman (703-503-9323).
Jul 17/18	Sat/Sun	CANOE THE RIVER - Brunswick to Monocacy. Contact Carl Linden (301-229-2398) or Ken Rollins (804-448-2934).
Aug 7	Sat	VIP WORKDAY - Watch for details.
Aug 21/22	Sat/Sun	WILLIAMSPORT CANAL DAYS - Contact Rita Bauman (703-503-9323).
Sep 4	Sat	VIP WORKDAY - Watch for details.

CALENDAR OF UPCOMING EVENTS - continued

<u>Date</u>	<u>Day</u>	<u>Event</u>
Sep 11/12	Sat/Sun	PAW PAW BENDS CANOE TRIP - Contact Carl Linden (301-229-2398) or Ken Rollins (804-448-2934).
Sep 18/19	Sat/Sun	Hancock Apple Festival - Contact Rita Bauman (703-503-9323).
Oct 10-15	Sun-Fri	THROUGH-BIKE TRIP - Cumberland to Georgetown. Contact Sonny DeForge (301-530-8830).
Oct 12-15	Tue-Fri	1993 INTERNATIONAL CONFERENCE ON HISTORIC CANALS - Dartmouth and Halifax, Nova Scotia. See letter and details in this issue. Contact Dave Johnson (301-530-7473).
Oct 23	Sat	Annual Heritage Hike - Lock 38 to Dam #4. Watch for details.
Nov 6	Sat	VIP WORKDAY - Watch for details.
Dec 4	Sat	VIP WORKDAY - Weather permitting. Watch for details.
Dec 11	Sat	"FROSTBITE" HIKE - Fletcher's to Dam #1 and return via Capital Crescent Trail. Contact Ken Rollins (804-448-2934).

.

"SIGHTS & SOUNDS"

The Sights & Sounds walks led by Park Service Volunteers/Association members Helen Johnston, Betty Henson and Betty Bushell are a regular feature of the C&O Canal activities and the Park Service volunteer programs. They are scheduled on the first and last Wednesday and Saturday of each month, starting at 10:00 a.m. at Great Falls Tavern.

Forty-eight walks were scheduled and led in 1992. Visitors totaled 340. About 60% are repeats.

In June "Sights & Sounds" hosted the C&O Canal Level Walkers and the Friends of Great Falls Tavern. During the year Helen Johnston led several walks for children and one for a group of over 25 French-Canadian teenagers. The only English-speaking member of the latter group was the young man in charge - a challenge to say the least!

The walks vary according to the capability of the visitors. They include not only the towpath but the trails through the woods to Anglers Inn, the Gold Mini tracts, Bear Island and the popular new walk to the Falls Overlook.

Over 400 hours were logged by each of the leaders in 1992. In addition Helen Johnston puts in many hours of preparation for the slides shown before each walk and on

preliminary scouting trips.

- - Betty Bushell

.

PUBLICATIONS COMMITTEE CONSIDERS CANAL GUIDE

You are reminded that the Board of Directors has authorized the Publications Committee to proceed with work on preparation of a C&O Canal Guide for possible public or internal distribution. Towards that end, your assistance is solicited. Please submit information you have including name of the establishment, location, services offered, directions from the canal, and other amplifying information such as a telephone number or point of contact to:

Ms. Karen M. Gray
C & O Canal Association
Publications Committee
P.O. Box 366
Glen Echo, MD 20812-0366

.

CANAL CLIPPER EXCURSION ON MAY 15

Association members and their families are invited to ride the Canal Clipper at Great Falls on May 15, 1993, at 9:30 a.m. This event is arranged by the Membership Committee especially for new members, but all are welcome. Following the one hour ride on the mule-drawn canalboat, refreshments will be served by the Membership Committee in the Tavern.

This special trip on the Clipper will be free for Association members. New members will be given priority in boarding, but in the past there have been enough seats for all members who show up. Please arrive at the Great Falls Tavern no later than 9:15 a.m. to take the ride.

☛ The Canal Clipper's regular public season will be open on April 10, with ninety-minute trips departing at 10:30 a.m., 1 p.m., and 3 p.m. on Saturdays and Sundays only through June 13. Beginning June 16, the Clipper will operate Wednesday through Sunday until September 12, when it will resume the weekend-only schedule through October 24. In addition, the Clipper will have a 5:00 p.m. trip on Sundays.

☛ The Georgetown will operate on the same schedule, leaving from Foundry Mall, between 30th Street and Thomas Jefferson Street, except that the 5 o'clock trips will be on Saturdays rather than Sundays. In addition, the Georgetown will have 1 p.m. and 3 p.m. trips on Wednesday through Friday during the spring and fall seasons.

☛ Regular fares on both boats are \$5.00 for adults and \$3.50 for children and senior citizens. The entrance fee at Great Falls has been raised to \$4 per automobile or \$2 per pedestrian or bicycle. An annual pass good for Great Falls Park in both Maryland and Virginia remains \$10 and the Golden Eagle Pass, for entrance into all national parks, is still \$25. Gold Age Passes are issued free to citizens age 62 and older, and are good in all national parks.

• • • • •

DIRECTORY C & O CANAL NHP TELEPHONE NUMBERS AND PERSONNEL

C & O CANAL NHP HOTRS
Box 4, Sharpsburg, MD 21782
301-739-4200

Superintendent ☛ Thomas Hobbs
Assistant ☛ Terrie Savering

Chief Ranger ☛ Keith Whisenant
Admin Officer ☛ Christine Streng
Asst Ch. Ranger & Chief, Visitor Protection Br
☛ Kevin Fitzgerald
Chief, Natural Resource Mgmt Br
☛ Patrick Toops
Chief, Cultural Resource Mgmt Br
☛ Susan Winter Frye
Chief, Interpretation Br
☛ Gordon Gay
Chief of Maintenance
☛ Sam May

PALISADES DISTRICT

11710 MacArthur Blvd, Potomac, MD 20854
301-443-0024

District Ranger ☛ Tom Nash
Supv Ranger - Visitor Protection
☛ Steve Pittleman
Supv Ranger - Fee Collection
☛ Terry Barbot
Supv Ranger - Interpretation
☛ Edith Roudebush

GEORGETOWN VISITORS CENTER

1055 Thomas Jefferson St, Washington, D.C.
202-472-4376
Park Ranger ☛ Kathy Kupper

Great Falls Tavern Information 301-299-3613

The Palisades District begins at Milepost 0 (Tidelock) and continues to Milepost 42.19 (Monocacy River).

WESTERN MARYLAND DISTRICT

District Ranger ☛ Dwight Stinson 301-739-4200 x237
Supv Ranger ☛ Matrin Gallery 301-678-5463

Antietam Creek Ranger Station
Canal Road, Sharpsburg, MD 21782 301-739-4200 x237
Park Ranger ☛ Fred Viers

Hancock Visitors Center
326 East Main Street
Hancock, Maryland 21750
301-678-5463
Park Ranger ☛ Sherilyn Seyler

Cumberland Visitors Center
Western Maryland Station
Cumberland, Maryland 21502

Park Ranger

Rita Knox

The Western Maryland District begins at Milepost 42.19 (Monocacy River) and ends at the Canal Terminus, Cumberland, Milepost 184.5.

Georgetown Barge Operation

202-472-4376

Abner Cloud House

202-472-2679

Fletcher's Boat House (Concessionaire)

202-244-0461

Canal Clipper, Great Falls Tavern

301-299-2026

Swains Lock (Concessionaire)

301-299-9006

Western Maryland Station Center

301-722-8226

.....

INFORMATION PLEASE ...

ROBERT A. FLOCKE
8662 Pohick Forest Court
Springfield, Virginia 22153

February 12, 1993

Mr. Robert C. Perry
Editor, "Along the Towpath"
12713 Knightsbridge Drive
Woodbridge, Virginia 22192

Dear Mr. Perry:

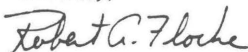
My family and I recently returned to Northern Virginia after four years in Europe with the Army. It is great to receive "Along the Towpath" in a timely manner rather than several months late after it has wound its way through the military postal system. You have done a good job with the newsletter, and it is very enjoyable.

I need some help on a genealogical issue, and maybe some of your readers can help.

My wife's great (x6) grandfather, John Shellhorn, owned land and ran an "ordinary house" near the Potomac River in Allegheny County, Maryland, during the last years of the 18th century. When John died in 1800, his widow kept the ordinary and surrounding lands with the remaining land divided among their adult children. His widow, Ann, remarried, and in 1828 deeded land to the C&O Canal Company for right of way. We have seen references on old maps to a Shellhorn Tavern, and in Towpath Guide to the C&O Canal, Thomas F. Mahn lists mile marker 170 as the "approximate location for Shellhorn Tavern operating in 1795." There are ruins between the towpath and the river at mile marker 170. We would appreciate any information your readers may be able to provide about the family, the tavern, and its operation.

Thank you for your assistance, and keep up the good work with your quality publication.

Sincerely,



Robert A. Flocke

CALL FOR PAPERS



CALL FOR PAPERS

1993 INTERNATIONAL CONFERENCE ON HISTORIC CANALS

12 -15 OCTOBER 1993
DARTMOUTH AND HALIFAX, NOVA SCOTIA

The organizers of the 1993 International Conference on Historic Canals invite all those interested in making a presentation to the Conference to send a brief abstract of their papers before 31 March 1993.

The organizers would like especially to invite those persons with an interest in the following to give consideration to presenting their research and experiences during the conference:

Engineering History	Water Conservation
Canal and Freshwater Vessels	Canalside Industries
19th Century Surveying	Historic Canal Preservation
Tourism and the Environment	Navvies and Boatmen
River Navigation	Steamboats and Barges

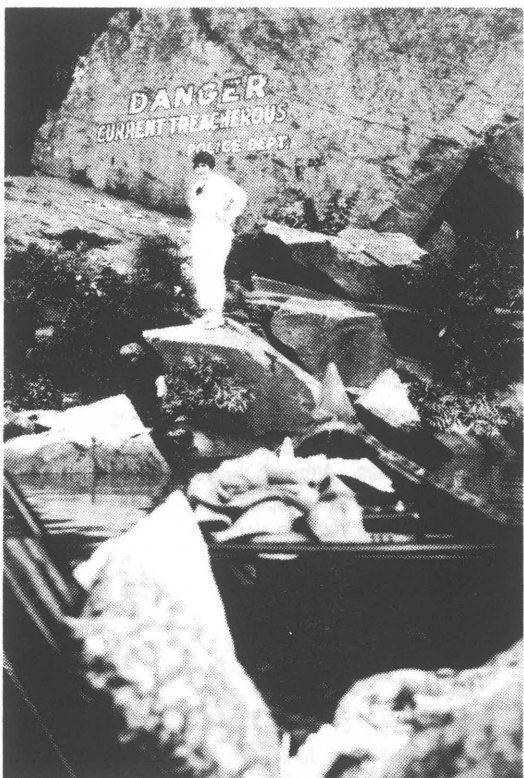
Other Topics Welcome

Please send a brief abstract of your paper to:

1993 Conference
Shubenacadie Canal Commission
54 Locks Road
Dartmouth, Nova Scotia
B2X 2W7

TO THE EDITOR.....

ABNER J. KAPLAN
2402 East Strathmore Avenue
Baltimore, Maryland 21214



Great Falls

Photographs courtesy Abner J. Kaplan.

January 8, 1993

Mr. Robert C. Perry
12713 Knightsbridge Drive
Woodbridge, VA. 22192

Dear Mr Perry:

The December issue of "Along the Towpath" was especially interesting, both from the standpoint of improved format and the accompanying beautiful print of the canal at Georgetown. The latter was especially intriguing since it cleared up for me the identification of a photo print that I've had in my possession for a number of years.

Quite some time ago my son and wife moved into an older home in Hyattsville. In the attic he found a large number of negatives left there by a previous owner. It turned out that the latter was a professional photographer who years ago was employed by a Washington newspaper or other publications to photo events of interest. In the process he apparently took pictures for his own pleasure. From all indications this was around 1917 to about 1920 or so. For instance several of the photos showed troops at the end of World War I marching down Pennsylvania Avenue.

I am enclosing two prints, one undoubtedly at Great Falls. The other certainly had to be along the canal at Georgetown, although I was unaware of this until I saw the print that accompanied your last publication. I am sure my old friends in Williamsport could have identified this for me, but I never had the presence of mind to take it with me when I visited my home town.

I was born in Williamsport and from early boyhood until 1948, when we moved to Baltimore, spent many happy days there and on the Potomac. In that connection I have noted that in recent articles and accounts, canal boats are referred to as barges. In all my years along the canal I never heard boatsmen or townspeople identify these boats as barges. To us the word barge called to mind a cold, impersonal vessel - strictly utilitarian, while our canal boats were homes, with all that this connotes in the way of family living as it was known then.

The enclosed are for your information and any use you may want to make of them. Will you please return them at your convenience. The negatives are not at hand.

Sincerely,

Abner J. Kaplan



Canal Boat in Georgetown



SHUBENACADIE CANAL COMMISSION

Fairbanks Centre Tel: (902) 462-1826
54 Locks Road Fax: (902) 434-6787
Dartmouth NS
B2X 2W7

3 February 1993

Dear Colleague:

The 1993 International Conference on Historic Canals is scheduled for October 12th to 15th, at Dartmouth and Halifax, Nova Scotia. The hosts for this year will be the Shubenacadie Canal Commission. Conference sessions will be divided between the Holiday Inn in Dartmouth, overlooking Halifax Harbour and the Fairbanks Centre, headquarters of the Canal Commission.

Conference planning is underway and we look forward to receiving your proposals for workshop sessions. A highlight of your stay will be a bus trip along our 115 km waterway comprised of seven lakes and a tidal river - all made navigable by a number of canal cuts, nine locks and two inclined planes. Although the waterway has not been used for transport since 1870, the Commission has recently completed a development plan which we hope will result in much of the system being made navigable again. During your trip along the system you will have an opportunity to see the recently restored Lock #5. Our waterway tour will end at the historic village of Maitland on the shores of the Minas Basin near the location of the highest tides in the world. Prior to the trip there will be an opportunity to meet several of the historians and archaeologists who were involved in research on our canal. A second excursion will be a tour of the world famous Halifax harbour, the starting point of the historic Shubenacadie Canal.

Because the cost of conference facilities at the Holiday Inn will be determined by the number of hotel rooms which are booked, it is very important to have as many participants as possible pre-register by June 30th. For further information please write Bernard Hart, Chair, Planning Committee, 1993 International Conference on Historic Canals, or phone Peter Latta, General Manager, Shubenacadie Canal Commission (902-462-1826). We will be doing a second mailing in early April which will include details concerning costs and an update on the conference agenda.

Typically October in Nova Scotia is known for reasonably warm days and cool evenings - a pleasant time to tour. If you would like us to assist you in planning your time in the province either before or after the conference, please let us know.

Yours sincerely,

Bernard Hart
Chair, Conference Planning

DINNER RESERVATION

1993 DOUGLAS HIKE

24 APRIL 1993

Please reserve _____ dinners for the Douglas Reunion Hike @ \$14.50 per person.

Names: _____

Total enclosed - \$ _____

Make check payable to : "C & O Canal Association."

Mail this form with payment to C&O Canal Association, P.O. Box 366, Glen Echo, MD 20812-0366.

ALONG THE TOWPATH