



C & O Canal Association

ALONG THE TOWPATH

concerned with the conservation of the natural and historical environment of the C&O Canal and the Potomac River Basin

VOLUME XXVII

MARCH 1995

NUMBER 1

TOUR OF HARPERS FERRY AND DEDICATION OF LIL HIGHLIGHT THE ANNUAL MEETING

At about 10:00 a.m. Saturday, March 4, 1995, two NPS busses carried approximately 60 people to the town of Harpers Ferry. Led by John Frye, we started the tour beside the Shenandoah River near the remains of the skirting canal (around the rapids). The group learned about the Shenandoah Navigation which began about 125 miles south, about boats that were manufactured in Port Republic, Virginia, below Harrisonburg, and how the boats were used for one way trips down (really up) the Shenandoah, at which time the boats would be sold. The boats were 70 to 75 feet long and 30 to 35 feet wide. A tour of the masonic temple revealed that the overhead trusses were in part constructed from the timbers of a boat from the Shenandoah Navigation, the stringers and transverse portions simply being in an inverted position.

John pointed to the river flood gauge and told of the great flood of 1936. Both the Potomac and the Shenandoah River bridges were swept away. John gave us a thumb-nail sketch of the history of Harpers Ferry. Over the past 250 years the town has been devastated by floods, torn by the American Civil War, and impacted by the railroad. Did you know that the Fire Engine House (the John Brown Building) has been moved five times? Yet, through thick and thin, the town has persevered on its panoramic

promontory where the two majestic rivers meet. John led us across the Potomac on the railroad bridge pedestrian walkway to lock 33. Walking the footbridge is an experience in itself, providing grand vantage points for viewing the magnificent riverscape. John noted that visitors to Harpers Ferry who cross the bridge are often unaware of the presence of the C&O Canal. Pointing to the ruins of the white stone building across from the Lock, John stated it is often dubbed the *Salty Dog Tavern*, though its less colorful but correct name is the *Elgin House*, after its original owner. The *Salty Dog*, in fact,

belongs to the post-canal era. A wooden building just to the east of the *Elgin House*, the *Salty Dog* was reportedly given its name because the juke box inside played only one tune and that tune happened to be....."Let Me Be Your Salty Dog."



The Dedication of Lil: (L to R) Sarah Morgan, Walter Wilt, Carl Linden, Tom Perry, Lil, Frank Galvin, and Lillian Langdon.

John also pointed to the prominent but now faded sign painted on the face of the cliff on Maryland Heights. (PATC climbers once rappelled from the cliff's edge and painted over the sign at which they took

offense. But, to no avail. Mother Nature rules in favor of the original enterprising risk-taker. For time and the elements are conspiring to restore the sign, an advertisement for Mennen's Borated Toilet Powder, no less... Curiously, the original paint, because of its goat's milk content, is chewing its way through the paintover. (gadzooks, foiled again!)

The tour ended in good time for all to have lunch and prepare for the Annual Meeting. Thanks to historian John Frye for another one of his enlightening tours.

ANNUAL MEETING AT HARPERS FERRY

The 41st Annual Meeting of the C&O Canal Association took place March 4 at the Cliffside Inn at Harpers Ferry. It opened with a presentation by the president, Carl Linden, who drew attention to 1994's highlight event, the 40th anniversary Justice Douglas through hike. Other important developments of the year were the establishment of a C&O Canal Fund, which includes an account for restoration of the Monocacy Aqueduct, and an increase in contributions to the Davies Legal Defense Fund.

This was the "Year of the Mule," as Carl noted, a year-long celebration of this noble animal, that began with a contribution from the canal fund to help NPS purchase a new mule. It was named Lil in honor of Lillian Langdon, who was born on a canal boat and was named after her father's mule, Lil. After much publicity to introduce Lil to the Association membership, an appropriate dedication event, with blessing of the beast, was held.

Other points Carl mentioned included several publishing activities.

Reports were given by the treasurer, the level-walker chair and the chairs of the following committees: membership, programs, volunteer programs, and environmental, as well as a report by the membership coordinator.

In the voting for officers and board members, the following were elected to office: Carl Linden, president; Tom Perry, first vice president; Keith Kridenoff, second vice president and level-walker chair; Rachel Stewart, secretary; Dave Johnson, treasurer; and Helen Shaw, information officer. New Board members are Bill Evans, Karen Gray, Fred Mopsik, Gary Petrichick and Peggy Weber.

The dedication ceremony for Lil, the mule, followed the meeting, with Mrs. Langdon and Frank Galvin, the NPS mule trainer, as special guests. The Rev. Tom Perry read a blessing of the beast, which was followed by appropriate cantorial singing by Dr. Jeffrey Simon. After happy hour and a banquet at which the new park superintendent, Douglas Faris, was principal speaker, the day's events came to a close.

- - Jane Larsen, Secretary

The Association wishes to acknowledge the hard work and enthusiasm of our outgoing Secretary, Jane Larsen.

Congratulataions are in order to newly elected Board members Bill Evans, Karen Gray, Fred Mopsik, Gary Petrichick, and Peggy Weber.

To outgoing Board members John Fondersmith, Sharon Freedman, James Millar, and Douglas Mussen, thank you for your dedication and spirit.

THE DEDICATION OF LIL

The dedication of NPS 10, Lil, was a highlight of the day for the nearly 100 people who attended the *Blessing of the Beast*. NPS Trainer Frank Galvin held the reins throughout the ceremony. Beside Frank and Lil-the-mule stood Lil Langdon, dressed in canaler clothing of the day, blue denim shirt with a red kerchief, as Carl Linden called the dedication to order. Mrs. Langdon was escorted by her two sons.

Also attending was Superintendent Faris. After being introduced by President Carl Linden, the Superintendent spoke of Frank Galvin and his ability to take care of mules, describing him as a thoughtful and dedicated worker--a key part of the program in our park.

Carl read from Mrs. Langdon's writing, *I was born on Boat 79 during a blizzard on January 16, 1912. My dad named me Lil after his favorite mule who he described as a hard worker, but couldn't be pushed too far.....*

Sarah Morgan presented flowers to Mrs. Langdon, who expressed her pleasure at being at the ceremony. Next, Mrs. Langdon presented a carrot to her namesake.

Then, Carl introduced Vice President (Reverend) Tom Perry. Making it clear this event was **not** a christening, Tom proceeded to share some information from the encyclopedia about mules. *Like those of us who volunteer in the park, the mules work best when they are treated with kindness.* Tom noted it is hard to find material about mules in the Bible or prayer books. Nonetheless, he led a most appropriate blessing of Lil.

Following, Cantor Jeffrey Simon sang a rendition of *All Things Bright and Beautiful*:

*All things bright and beautiful,
All creatures great and small.
All things wide and wonderful,
The Lord God made them all.*

*The tall trees in the greenwood,
The park lands where we play.
This fine new mule for the NPS,
That hasn't learned to bray.*

Trainer Frank Galvin shared a few words of appreciation and informed us that Lil will be five years old on July 4, 1995. She was born at Lake Anna in Virginia.

Carl presented engraved brass mule pins, cut by Earl McFarland, to Mrs. Langdon and to Frank Galvin. Tom Perry presented Amish- crafted wooden mules to Superintendent Faris and President Linden.

The ceremony concluded and all prepared for the evening meal. Our hearts were touched as Lil became dedicated and blessed with dignity, style, and grace.

Along the Towpath

PRESIDENT'S COLUMN - Annual Report

"Brevity is the soul of wit!" In annual reports there is neither soul nor wit. I will attempt to do what remains: be brief.

Without a doubt the past year's high point was the 40th Anniversary Justice William O. Douglas Hike from Cumberland to Washington. The April weather was halcyon (only one big shower), the camaraderie contagious, and the fortnight of celebration, a joy. Cathy Douglas Stone sent the hikers on their way with these words:

The idea that one citizen could say, 'I don't want a road, I want the canal,' is a wonderful statement of democracy. This is a celebration of people taking care of the Earth.

From that one citizen and the circle gathered around him our Association was born. It was then dedicated to the creation of the canal park as it is now committed to caring for that park and its river basin. Citizen care has saved the canal from burial under pavement and other forms of destruction. As a result the canal still lives for all of us in its reincarnation as a C & O Canal National Historical Park!

Let me mention a few of the new things that we have been doing this past year in our care for the canal:

- We set up an Association-sponsored **C&O Canal Fund** in the National Park Foundation. The fund enables our members and others to make tax-deductible contributions to park purposes and projects. A specific **Monocacy Aqueduct Fund** has also been established to aid the effort to save the crown jewel of the aqueducts. Both new funds are off to a good start with generous contributions sent in with annual membership renewals (\$1,061 and \$446 to date respectively) and \$529 to the **Davies Fund**. This contingency fund for legal action in defense of the canal is now within \$300.00 of its \$10,000 goal.

- We gave the Canal Park a hand with a matching fund in acquiring 'Lil,' our new four-year old Bay Mare mule, now in OJT for pulling the canal boat in Georgetown.

- We are defraying the cost of printing 20,000 copies of the canal park's new edition of the **C&O Canal NHP Facilities Guide**. This is an indispensable and handy guide for the canal hiker, biker, or visitor put together by the park staff. We published our new **C&O Canal Food & Lodging Guide** which sold like hotcakes (2,000 distributed). A new printing is in the works. These two handy guidebooks make good partners.

- We are at work preparing a new and updated edition of William Clague's handbook of canal maps, including points of access, and adjacent areas. In consultation with the author an Association team will be doing a mapping study of the canal in the field beginning in March. The Level Walkers already are busy checking the Clague maps for changes on their levels. The mapping team looks to coordinating its work with the canal park's project to develop a computer data base on canal features, both natural and man-made.

In all of these initiatives during the past year the Association, enjoyed the friendly cooperation of the canal park's fine professional corps. The National Park Service, in turn, generously recognized our work in the canal's interest with a "Partnership-Leadership" award to the Association at ceremonies held last June at the Potowmack Restaurant.

Though the Douglas thru-hike consumed the time and energy of a number of our members, we did not skimp on our other activities on canal and river including our three scheduled canoe trips (Paw Paw to Stickpile to Little Orleans, Violette's Lock to Great Falls, and Brunswick to the Monocacy Aqueduct), a re-union of the Douglas thru-hikers, past and present, in October at the Kanawha Club, and the annual Heritage Hike in November. Our Level Walkers made their regular rounds observing and submitting reports on all the canal's levels. The reporting provides both the Park Service and the Association with a current picture of the condition of the canal from one end to the other.

Some of our willing-to-work members also took part in the NPS VIP (Volunteers in the Park) Program (more of us should lend a hand in this worthy enterprise), others manned Association information booths at fairs held in various towns up and down the canal. Also a contingent of our members and park staffers took part in the 1994 International Historic Canals Conference hosted by the Trent-Severn Waterway in Canada.

Based on a projection of the rising cost of running the Association in the next decade, we raised dues for the first time in eight years to maintain our solvency. Much of the credit for keeping us afloat goes to the able treasurers we have had in recent years. The raise also covers mailing the newsletter first, instead of third class, to insure prompt receipt by members. At this date membership renewals are running strong.

The strength of our Association of volunteers over the past four decades lies in its ready reserve of members willing to devote their time and energy to the canal and river. They are not elitist but welcome any who wish to lend their hand to the common task. None need be shy in stepping forward. We also highly appreciate those members who are less

PRESIDENT'S COLUMN - continued

active, for whatever reason, but who regularly send in their dues and contributions for no other reason than love of the canal and devotion to its cause.

In looking ahead we will need to take care that we continue to do well what we have been doing but also to be alert to new possibilities for increasing the reach and effect of the help we extend to the canal park.

The Association worked for seventeen years to bring the park into being, but the park, we well know, is never home free. The public and its representatives need to be kept aware that the wonders of the canal park cannot be taken for granted. Its guardians, the professional corps of the Park Service, the members of the canal's citizens' advisory commission, and its organized citizen constituency, are in a common and constant battle to preserve and enhance the park and its river environs not only against degradation by blind forces of nature but depredation by thoughtless human agency as well. Our main resource is our resourcefulness and as long as we wield it well victory will be with us!

- - Carl Linden

.....

VOLUNTEERS IN THE PARK

The VIP (Volunteers in Parks) work group has been well-attended of late and has accomplished several important repairs and improvements along the towpath. Repairs were made to the canal/towpath retaining walls at Mary's Wall (Milepost 13.86) and rocks were added to ease passage over the Widewater washout (Milepost 13), long a trouble spot for bikers who have been asked to detour via the Brema Road. Nature groups (Sights and Sounds of the Season) and hikers found scrambling over the Widewater washout a hazard. Many turned about rather than risk wet feet or a turned ankle. Hopefully the National Park Service will undertake a proper restoration of this section of the Towpath.

Among those who have been most regular in their participation in VIP Workdays have been: Anne and Mario Abbate, Ruth Eckel, Thad Hecht, Dave Johnson, John Lindt, Susan Marsh, Joan Paull, Betty Portola, Jim Sanders, Bill Speck, and Pat and Jim White. These volunteers have earned yellow VIP hats.

VIP Workdays are the first Saturday of most months from 9 A.M. to noon at the location indicated on the calendar in *Along the Towpath*. You need not sign-up in advance; just arrive and sign-in ready to work. For more information, call John Lindt at 301-469-6381 or Ranger Terry Barbot at 301-299-3613.

- - John Lindt

.....

PUBLICATIONS COMMITTEE ANNUAL REPORT

This has been a productive year for the Publications Committee. We are now in our second printing of the Guide to Food and Lodging Along the C & O Canal. Of the original two thousand copies printed, 700 were given to members and the remainder sold. We continually received changes and updates and plan to have a second edition of the guide sometime in late fall of this year.

With the active assistance of numerous members (including the Level Walkers) and in close consultation with William Clague, the author, we are presently preparing a revision of his C&O Canal Towpath Maps book. This will update the access points of the towpath and will include hiker biker locations, locks, aqueducts and other points of interest.

A new membership application brochure is also being prepared and will be available sometime this summer.

There seems to be great interest in having a new membership directory. The last time one was prepared was in 1989. A few members have expressed a desire not to be included in such a directory, and if one is prepared, we would be careful not to list these individuals. There is no firm commitment at this point about publishing a membership directory. Your input is solicited. Please let us know.

As the above shows, we are an active committee and would very much like to add new members. If you are interested, give Helen Shaw a call.

- - Helen Shaw

.....



CHESAPEAKE & OHIO CANAL ASSOCIATION, INC.
FINANCIAL STATEMENTS FOR 1994

BALANCE SHEET	1994	1993
ASSETS		
Current Assets:		
Cash - Checking Account	\$ 8,450	\$ 16,068
Temporary Investments	8,699	0
Interest Receivable	0	22
Prepaid Expenses	2,086	2,705
Other Current Assets	<u>50</u>	<u>50</u>
	\$19,285	\$18,845
Inventories:		
Shirts & Patches	\$ 755	\$ 832
Books	963	1,601
Miscellaneous	<u>69</u>	<u>0</u>
	1,787	2,433
Fixed Assets:		
Property & Equipment	\$ 9,051	\$ 5,579
Less: Depreciation	<u>2,743</u>	<u>1,046</u>
Total Assets	<u>\$27,380</u>	<u>\$25,811</u>
LIABILITIES & EQUITY		
Current Liabilities		
Revenue in Advance	\$ 465	\$ 4,822
Sales & Use Tax Payable	93	38
C & O Canal Fund Payable	<u>\$ 70</u>	<u>0</u>
	\$ 628	\$ 4,860
Equity:		
Unappropriated Surplus	\$18,053	\$14,428
Reserve, Davies Legal Fund	<u>8,699</u>	<u>6,523</u>
Totals	<u>\$ 27,380</u>	<u>\$ 25,811</u>

STATEMENT OF INCOME AND EXPENSE

Administrative Functions:	1994	%	1993
INCOME:	1994	Budget	Realized
Dues	\$ 11,155	\$ 10,000	112
Interest	280	400	70
Miscellaneous	<u>439</u>	<u>0</u>	<u>112</u>
	\$ 11,874	\$ 10,400	114%
EXPENSES:			
Newsletter	\$ 4,047	\$ 5,410	75%
Bulletin	195	1,575	12
President	167	400	42
Secretary	407	555	73
Treasurer	384	400	96
Information Officer	5	25	20
Level Walkers	60	100	60
Environmental Committee	0	25	0
Membership Coordinator	858	845	102
Membership Committee	704	815	86
Archives Committee	471	750	63
Program Committee	0	50	40
Volunteers Committee	0	25	0
Nominating Committee	16	25	64
Publications Committee	87	125	69
Stationery	0	400	70
Dues and Contributions	50	250	20
Grant to National Park Service	1,000	1,000	100
C & O Canal Fund	1,000	1,000	100
Davies Defense Fund	500	500	100
Depreciation	1,698	1,680	101
Maintenance	<u>11</u>	<u>375</u>	<u>3</u>
	\$ 11,660	\$ 16,330	71%
Nets	<u>\$ 214</u>	<u>(\$ 5,930)</u>	<u>(\$ 2,743)</u>
Unbudgeted Functions:			
Receipts:			
Sales	\$ 4,152		\$ 4,039
Annual Meeting	1,196		1,350
Douglas Through Hike	19,251		1,211
Heritage Hike	<u>922</u>		<u>1,062</u>
Costs & Expenses:			
Costs of Goods Sold	\$ 2,778		\$ 2,063
Annual Meeting	1,196		1,478
Douglas Through Hike	17,050		1,211
Heritage Hike	<u>1,105</u>		<u>939</u>
	\$ 22,109		\$ 5,691
Nets	<u>\$ 3,412</u>		<u>\$ 1,970</u>
Excess of Expenses and Costs			<u>\$ 773</u>
Excess of Income	<u>\$ 3,625</u>		

- - Bill Evans

ANNUAL REPORT OF MEMBERSHIP COORDINATOR

First, a word about our mailing labels. At the top of your mailing label is a notation "M/94", "C/95", "P/94", etc. We separate the membership list into six (6) types: M = individual Member; F = Family membership; P = Patron membership; L = Life membership; C = Complimentary and Y = Commissioner. The first three types are dues paying. Life membership is conferred only by the Board of Directors, to the *original* hikers with Justice Douglas, or their widows. Complimentary copies of *ALONG THE TOWPATH* are mailed to other canal organizations, congressmen (or their staff members), libraries, etc. C & O Canal Commission members who are not members of the Association are also mailed free copies of *ALONG THE TOWPATH*. The year, then, indicates the year through which your dues are paid or you will continue to receive a complimentary copy of our newsletter. This information is of particular interest to new members and in December when you receive your renewal notice. After the March edition of *ALONG THE TOWPATH*, the membership list is purged of non-renewals and those former members no longer receive Association material.

The following table reflects Association membership sorted by Membership Type:

Type	3/6/93	3/2/94	3/4/95
Individual	364	466	451
Family	200	293	301
Patron	379	169	142
Life	4	4	4
Complimentary	51	42	47
Commission	5	5	4
Totals	1003	979	949

We show a gradual decline in total membership, dramatically in Patron membership. However, Individual and Family memberships have shown a general increase. Some of the shift in membership type could be attributed to the recent dues increase.

Since 1/1/95 we have received 454 renewals for '95. In the renewal application we included a question regarding the prospective Membership Directory; do you agree to have your name, address and telephone number included? YES or NO. That same question is now included in the new member questionnaire. Of the 454 renewals, 339 (75%) responded to the question. Of the 339 responses, 311 (92%) responded YES while 28 (8%) responded NO. Of the YES votes, 5 members indicated that they did not want their telephone number included; that can be accommodated. Now the Board of Directors is deliberating if a Membership Directory will be published, the cutoff date for entries, and who will receive a copy. You are encouraged to talk to the Board of Directors and let your views be known.

As new members join and return their questionnaires, the demographics of the Association change. We have returned questionnaires from approximately 60% of the membership. Our membership is getting younger:

	<21	21-35	36-45	46-55	56-65	66-75	>75
'93	0	23	68	96	109	103	31
'94	1	39	100	126	136	125	35

We are hiking on the C & O Canal more often:

	Weekly	Monthly	Quarterly	Yearly	Assn. Functions
'93	87	123	138	32	29
'94	114	159	181	50	31

And our interests in non-consumptive use of the Park remain strong as ever:

	Canal Preservation	Day Hikes	History	Bicycling	Birdwatching	Wildflowers
'93	282	236	282	145	120	127
'94	370	331	375	210	145	155

We also have members with interests in canoeing, camping, photography, railroading and geology, for example. The Programs Committee is looking for activity leaders; for daytime, overnight and even week-long events. Come join in as your schedule and interests permit.

- - William D. Bauman



The Association has embroidered patches for sale. These 3 1/4 by 2 inch patches have green lettering and design on a gold background. The cost is \$1.85 including postage and handling for each patch. Maryland residents add 8% sales tax. To order, please send the following information:

- Number of patches
- Total amount enclosed
- Name
- Address

to: C&O Canal Association
P. O. Box 366
Glen Echo, MD, 20812-0366.

SECOND ANNUAL EARTH DAY CLEAN UP

Last year the C&O Canal NHP sponsored an Earth Day clean up in the Hancock area, which was a resounding success. Because of the outstanding participation, the event is rescheduled this year for April 1, 1995. Several school groups as well as local civic groups and volunteers attended and filled two trucks with recyclables and debris. This year it would be great for more people to work together on this worthwhile project. Further details will be forthcoming. Those interested in participating should call Ken Kridenoff at (410) 661-8285.



- - Keith D. Kridenoff

On The Level

By Keith D. Kridenoff
1994 Level Walker Chairman

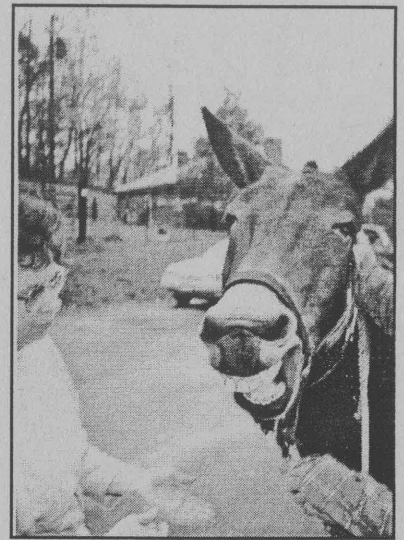
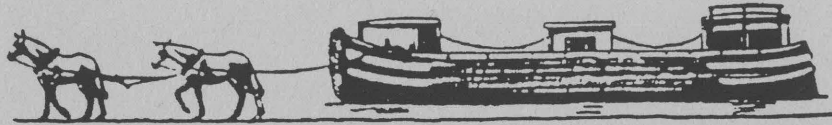
Thanks again go out to all the Level Walkers who participated in the program in 1994. With your help, we will make 1995 another successful year. Enclosed at the end of this report is a list of active Level Walkers from last year. This does not include members who have turned in their first reports during 95. You are invited to become a Level Walker, and we would like to accommodate your preference anywhere along the canal. It would be helpful if you would consider one of the unreported or under-reported levels.

1725 Red Oak Road
Baltimore MD 21234
(410) 661-8285

Following are reports received by the February 5th deadline. The next deadline is May 5th.

2 - 2.3 to 5 Old Boat Incline to Lock 5 Larry & Sue Anderson (11/5) Trash heavy under chain bridge with rusted drum off to side at mile 5. Towpath in good shape with few pockets of erosion.	8 - 16.6 to 19.6 Swains Lock to Pennyfield Lock Paul & Maggie Davis (11/10 & 12/23) A large number of water-filled holes along level which need small amount of fill. Tree still in canal prism near mile 18. (11/10) Parking area at Pennyfield resurfaced. Much effort by NPS has resulted in removal of many tree trunks and limbs from level. (12/23)	14 - 33 to 35.5 Edwards Ferry to Whites Ferry Herb Madison (1/8) Picnic table missing from Turtle Run HBO. NPS boundary sign nailed to log on ground near culvert at 33.3.
3 - 5 to 7.5 Lock 5 to Cabin John James & Joan Wilson (11/7,8,9 & 12/18,19,20) Towpath clear with fall leaves possibly covering a lot of trash. (11/7-) Trash cans need to be replaced at top of Sycamore access path. Spotted 3 pairs of mallards and fresh beaver activity at Sycamore Island.	9 - 19.63 to 22.82 Lock 22 to Lock 24 Seneca John Fragale (12/28) Towpath remarkably free of trash. Sign of recent beaver activity noted with fresh cuttings.	15 - 35.5 to 39.4 Whites Ferry to Lock 26 Herbert C. Madison (1/22) Much trash accumulated at both ends of level. Milepost 38 has been damaged and needs replacement.
4 - 7.5 to 9.4 Cabin John to Lock 14 Carolyn Reeder (10/10) Cabin John culvert clear and free running. Erosion of bank opposite cabin on island is getting worse and presents a hazard to bikers. Water level lower than usual.	11 - 25 to 27.2 Tenfoot Island to Sycamore Landing Sharon Freedman (10/1) Canal prism was dry and trash free. Picnic tables at HBO are in need of repair.	19 - 48.2 to 51.5 Point of Rocks to Catoctin Creek Jack & Pat Cook (11/3) Back door of lockhouse 29 broken in middle. Someone planted a row of tulips in front of back porch.
6 - 12.3 to 14.3 Cropley to Great Falls Harry T. Bridges (11/3,1/2) Ernest Green (1/12) Gap in the towpath at Widewater continues to worsen. Towpath busy on this warm November day (11/3). Some repair work has been made at Widewater but major reconstruction still needed. Light usage of towpath today (1/2). Dead raccoon above Cropley and two trees felled by beavers near Lock 15 now gone. Rooted timbers at bypass flume of Lock 16 temporarily repaired.	12 - 27.2 to 30.8 Sycamore Landing to Edwards Ferry Stephen Pollock (11/6) Large tree across towpath downstream of mile 28.	20 - 51.5 to 55 Lock 30 to Catoctin Creek Aqueduct Thad Hecht (12/4) Joe Robbins/Joy Bloom (1/12) Variety of garbage from tires to a lawn mower collected along level. (12/4) Also picked up an unusual variety of trash on this rainy January day (1/12).
7 - 14.3 to 16.6 Great Falls Tavern to Swains Lock 21 Mark Page (1/8) Six feet of towpath badly eroded above Tavern. Much fisherman debris discarded near Swains.	13 - 30.8 to 33 Edwards Ferry to Harrison Island Don Groelsema (12/28) Bert Grose (1/13) First mile of towpath above Edwards Ferry in need of fill --- many puddles. New beaver activity noted at mile 32.4 with former dam at 32.8 abandoned (12/28). Collected one bag of trash and spotted several species of birds. (1/13)	21 - 55 to 58 Brunswick to Weverton Lock 31 Emmalyn Holdridge (1/14) Trash mostly collected in drainage areas. Barbed wire separated towpath from river for a long stretch.
	13 & 14 - 30.84 to 35.5 Edwards Ferry to Whites Ferry Betty Henson, Betty Bushell, Pat Schindler & Herb Madison (11/9) Towpath in good condition. Found a leg of a deer along level and dead deer with its throat cut near Whites Ferry. New beaver cuttings throughout.	23 - 60.7 to 62.3 Lock 33 to Dam 3 Mike Reges & Kathy Wotring (12/24) Towpath in good condition. Very quiet and serene on this Christmas Eve.
		26 - 67 to 69.4 Lock 37 to Antietam Aqueduct Richard Metcalfe & Brenneke Families (10/30) More mattresses dumped from road north of mile 68. Entire level and parking lot had

Lil says, "LET'S PULL TOGETHER. RENEW NOW!"



MEMBERSHIP RENEWAL FOR 1995

I enclose my dues to renew membership with the C&O Canal Association for 1995 as indicated:

Name: _____	Individual: \$15 \$ _____
Address: _____	Family: \$20 \$ _____
_____	Patron: \$25 \$ _____
Phone: _____	C&O Canal Fund (NPF) \$ _____
	Monocacy Fund \$ _____
	Total \$ _____

Make your check payable to the *C&O Canal Association* and mail to: P.O. Box 366, Glen Echo, MD 20812-0366.

The Association is considering publication of a membership directory. If it does, do you agree to have your name, address, and telephone number included in the directory? ☐ Yes ☐ No.

Douglas Hike Directions:

From Winchester, Virginia, take Route 522 to Route 127. Turn left on to Route 127 and follow to Route 29. Route 29 intersects with and then becomes Route 9. Follow Route 9 to the Paw Paw Tunnel parking area (NPS) on the right.

From Cumberland, Maryland, follow Route 51 to the Paw Paw Tunnel Parking area (NPS) on the left.

From the D.C. and Metropolitan area, one may travel to Hancock, Maryland, and take Route 522 to Berkeley Springs, West Virginia, and turn right on Route 9 (a scenic, but slow road) to the Paw Paw Tunnel parking area (NPS) on the right, or travel to Winchester and follow the above instructions.

**C & O CANAL ASSOCIATION
1995 DOUGLAS HIKE**

**DINNER RESERVATION
American Legion Hall**

**APRIL 29, 1995
Paw Paw, WVA**

Please reserve _____ dinners for the Heritage Hike at \$10.00 per person.

Names: _____

**Reservations must received by April 22, 1995.
Make checks payable to the *C&O Canal Association* and mail to:
P.O. Box 366, Glen Echo, MD 20812-0366**

been recently cleaned.

27 - 69.4 to 72.8

Antietam Creek to Lock 38 Ken Rollins
(10/26)

Much vegetation in aqueduct walls which
needs removal. Very little trash noted.

28 - 72.8 to 74

Lock 38 to Lock 39

John Frye (11/6) Sonny DeForge (1/24)

Both lock areas clean and mowed with Lock
39 sign still in need of repair (11/6).

Collected one bag of trash (1/24).

32 - 81.6 to 84.4

Marsh Run Culvert to Dam 4

Bejay Myers & Edith Wilkerson (11/22)

Towpath in good condition with few downed
trees. Winter birds in abundance.

33 - 84.4 to 88.1

Dam 4 to Charles Mill

Paul & Rita Marth (12/11)

Spotted several osprey and one large
kingfisher on duck nesting box.

44 - 112.4 to 114.5

Fort Frederick to Ernstville

Jane & Hal Larsen (11/27) Marlin

Heintzelman (1/19)

Mostly drink containers in way of trash.

Intense and recent beaver activity from mile
112.7 to 112.9 (11/27). Towpath in good
condition with water level in Big Pool low
(1/19).

45 - 114.5 to 116

Ernstville to Licking Creek Ron Wilson

(11/26)

Many poison ivy vines near towpath had
been cut away. Culvert 153 needs cleaning
on river side. Towpath in relatively good
shape.

50 - 130 to 134

Lock 53 to Dam 6

Gren Whitman & Janice Plotczyk (11/5)

Vandals removed 2 stones from retaining
wall and threw them in intake lock. First
time level has ever been clean throughout.

55 & 56 - 149.7 to 153.1

Lock 60 to Lock 61

Herb Gunther (11/12)

Level in excellent condition. Beaver dams
located at MP 151. Also spotted opossum
near WM RR bridge.

66 - 175.5 to 177.7

Lock 74 to Mexico Farms

Tom Conlon (12/26)

Odor from old PPG settling basin at Lock 75
finally eliminated. Four or five trees recently
felled by beavers near prison site.

Active Level Walkers during 1994

Level I - Mile 0 to 2.3

Tidal Lock to Old Boat Incline

Carl Linden

Level 2 - Mile 2.3 to 5

Old Boat Incline to Lock 5

Jim & Gera Millar

Larry & Sue Anderson

Level 3 - Mile 5 to 7.5

Lock 5 to Cabin John Culvert

James & Joan Wilson

Dot Johnson

Level 4 - Mile 7.5 to 9.4

Cabin John Culvert to Lock 14

Carolyn Reeder

Charles Bookman

Level 5 - Mile 9.4 to 12.3

Lock 14 to Cropley

Jim & Gera Millar

Olivia Casasnovas

Level 6 - Mile 12.3 to 14.3

Cropley to Great Falls Lock 20

Helen Johnston

Ernest Green

Harry Bridges

Level 7 - Mile 14.3 to 16.6

Great Falls to Swains Lock 21

Jack Francis

George & Alice Kinter

Mark Page

Level 8 - Mile 16.6 to 19.6

Swains Lock 21 to Pennyfield Lock 22

Paul Davis

Edwin Martin

Wayne & Chris Cerniglia

Level 9 - Mile 19.6 to 22.8

Pennyfield Lock 22 to Seneca Aqueduct

John Fragale

Barbara Newland

Level 10 - Mile 22.8 to 25

Seneca Aqueduct to Tenfoot Island

Michael Werth

Les Meil

Harry Bridges

Level 11 - Mile 25 to 27.2

Tenfoot Island to Sycamore Landing

Sharon Freedman

Level 12 - Mile 27.2 to 30.8

Sycamore Landing to Edwards Ferry

Stephen Pollock

Charles Otstot

Teresa Cummings & David Hoerauf

Level 13 - Mile 30.8 to 33

Edwards Ferry to Milepost 33

Bert Grose

Don Groelsema

Davidson Gwatkin, Betty Bushell,

Betty Henson

Pat Schindler

Level 14 - Mile 33 to 35.5

Milepost 33 to Whites Ferry

Herbert Madison

Patricia Schindler

Betty Bushell

Betty Henson

Level 15 - Mile 35.5 to 39.4

Whites Ferry to Woods Lock 26

Lydia Crooks

Herbert Madison

Level 16 - Mile 39.4 to 42.2

Woods Lock 26 to Monocacy Aqueduct

Steve Dean

C.H. & Chris Breedlove

Level 17 - Mile 42.2 to 44.6

Monocacy Aqueduct to Noland's Ferry

Robert Adler

Terry & Bob Ledley

Alan & Win Fox

Level 18 - Mile 44.6 to 48.2

Noland's Ferry to Point of Rocks

Paul Redmer

Mary Olczak & G.S. Troop 2461 Norma

Hendrickson

Kristen & Sean McCabe

Level 19 - Mile 48.2 to 51.5

Point of Rocks to Catoctin Aqueduct

Lyman Stucker

John & Sue Anderson

Jack Cook

Level 20 - 51.5 to 55

Catoctin Aqueduct to Brunswick

Mario & Anne Abbate

Sylvia & Charles Diss

Thad Hecht

Level 21 - Mile 55 to 58

Brunswick to Weverton Lock 31

David M. Johnson
Emmalyn Holdridge

Level 22 - Mile 58 to 60.7
Weverton Lock 31 to Harpers Ferry

Bob Schoen

Level 23 - Mile 60.7 to 62.3
Harpers Ferry Lock 33 to Dam 3

Mike Reges & Kathy Wotring
Larry & Sue Anderson

Level 24 - Mile 62.3 to 65.1
Dam 3 to Dargan Quarry

Level 25 - Mile 65.1 to 67
Dargan Quarry to Lock 37

Don & Carol Juran

Level 26 - Mile 67 to 69.4
Lock 37 to Antietam Aqueduct

Rick Clement
Richard Metcalf & Brenneke Families

Level 27 - Mile 69.4 to 72.8
Antietam Aqueduct to Shepherdstown

Harry Robinson
Ken Rollins

Level 28 - Mile 72.8 to 74
Shepherdstown Lock 38 to Lock 39

John C. Frye

Level 29 - Mile 74 to 76.7
Lock 39 to Snyders Landing

Marshall Grotenhuis

Level 30 - Mile 76.7 to 79.4
Snyders Landing to Lock 40

Harry Cramer & Family

Level 31 - Mile 79.4 to 81.6
Lock 40 to Marsh Run Culvert

Deborah & Barry Kistler
Harry Cramer & Family

Level 32 - Mile 81.6 to 84.4
Marsh Run Culvert to Dam 4

Bejay Myers
Edith Wilkerson

Level 33 - Mile 84.4 to 88.1

Dam 4 to McMahons Mill

Nick & Peggy Weber
Paul & Rita Marth

Level 34 - Mile 88.1 to 91
McMahons Mill to Opequon Jot

Tom & Linda Perry

Level 35 - Mile 91 to 93
Opequon Jot to Lock 43

Ruth & Tack Swan

Level 36 - Mile 93 to 94.4
Lock 43 to Falling Waters

Level 37 - Mile 94.4 to 99.3
Falling Waters to Williamsport Lock 44

Ellen Holway

Level 38 - Mile 99.3 to 102.3
Lock 44 to High Rock Quarry

Level 39 - Mile 102.3 to 105
High Rock Quarry to Old Bridge Piers

Rita Bauman

Level 40 - Mile 105 to 106.8
Old Bridge Piers to Dam 5

Sheri Burdick

Level 41 - Mile 106.8 to 108.6
Dam 5 to Lock 47

Level 42 - Mile 108.6 to 110.4
Lock 47 to McCoys Ferry

John Ziegler

Level 43 - Mile 110.4 to 112.4
McCoys Ferry to Fort Frederick

Karen M. Gray

Level 44 - Mile 112.4 to 114.5
Fort Frederick to Ernstville

Jane & Hal Larsen

Level 45 - Mile 114.5 to 116
Ernstville to Licking Creek Aqueduct

Ron Wilson

Level 46 - Mile 116 to 120
Licking Creek to MP 120

John Popenoe

Level 47 - Mile 120 to 124.1
MP 120 to Hancock

Jim & Sally Bryant

Level 48 - Mile 124.1 to 127.4
Hancock to Round Top Cement Mill

Fred Seitz

Level 49 - Mile 127.4 to 130
Round Top Cement Mill to Lock 53

Norman McBurney

Level 50 - Mile 130 to 134.1
Lock 53 to Dam 6

Gren Whitman & Janice Plotczyk

Level 51 - Mile 134.1 to 136.6
Dam 6 to Sideling Hill Aqueduct

John Popenoe

Level 52 - Mile 136.6 to 140.9
Sideling Hill to Fifteen Mile Creek

Kent & Marcia Minichiello

Level 53 - Mile 140.9 to 146.6
Fifteen Mile Creek to Lock 59

John & Valerie Wheeler
Gary Petrichick

Level 54 - Mile 146.6 to 149.7
Lock 59 to Lock 60

John & Valerie Wheeler

Level 55 - Mile 149.7 to 151.2
Lock 60 to Culvert 208

Herb Gunther
William Price

Level 56 - Mile 151.2 to 153.1
Culvert 208 to Lock 61

Herb Gunther

Level 57 - Mile 153.1 to 154.5
Lock 61 to Lock 63 1/3

Ken & Marcie Campbell

Level 58 - Mile 154.5 to 156.2
Lock 63 1/3 to Paw Paw

Level 59 - Mile 156.2 to 159.7
Paw Paw to Culvert/ Little Cacapon

John Chandler

Level 60 - Mile 159.7 to 162.3
Culvert/ Little Cacapon to Town
Creek

Keith D. Kridenoff

Level 61 - Mile 182.3 to 164.8
Town Creek to Lock 68

Charles & Mary Ayres

Level 62 - Mile 164.8 to 167
Lock 68 to Lock 71

Level 63 - Mile 167 to 170.8
Lock 71 to Culvert 223

Level 64 - Mile 170.8 to 173.4
Culvert 223 to Spring Gap

Level 65 - Mile 173.4 to 175.5
Spring Gap to Lock 74

Mary Twigg

Level 66 - Mile 175.5 to 177.7
Lock 74 to Mexico Farms

Tom Conlon
Jim Sartwell
Mary Twigg

Level 67 - Mile 177.7 to 180.7
Mexico Farms to Evitts Creek

Mary Twigg

Level 68 - Mile 180.7 to 182.6
Evitts Creek to Wiley Ford

Wayne Hargy

Level 69 - Mile 182.8 to 184.5
Wiley Ford to Cumberland

.....

SUMMARY OF THE FEBRUARY 12, 1995 MEETING OF THE BOARD OF DIRECTORS

SUPERINTENDENT FARIS SPEAKS AT BOARD MEETING

At its February 12 meeting (postponed by weather from February 5), the Board of Directors heard remarks by Douglas Faris, the C&O Canal Park's new Superintendent. Newly arrived from an assignment at the National Park Service Southwest Region headquarters in Santa Fe, Faris moved quickly to acquaint himself with his territory and reported initiatives now under way.

Those projects include plans to list the 750 man-made structures in the park in a new inventory; continued work on rewatering projects; repair of the canal boats at Georgetown and Great Falls; and a study funded by a \$225,000 grant by the Maryland legislature relative to restoration of the Conococheague aqueduct. In addition, the Williamsport training center will move to the Gambrill mansion near Monacacy; a uniformed officer will be stationed at the Cushwa warehouse in Williamsport during the summer; funds will be sought to enhance the facility in Georgetown; and the Pennyfield house will probably be torn down.

Faris pointed to a need for more interpretation. He also mentioned several exciting prospects, e.g. the Rails-to-Trails project westward from Big Pool; the engineering study to be undertaken by Maryland for the Cumberland parkway; towpath

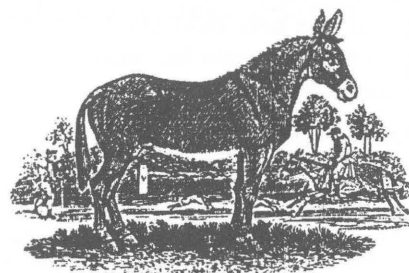
restoration at Slackwater; improvements in the Tidelock area; and efforts to strengthen the support system of the Monocacy aqueduct. Faris thinks the Congress is unlikely to award sufficient funding for full restoration.

Actions the Board took at this meeting include: (1) a resolution of appreciation for Bill Evans's four years' service as treasurer; (2) a \$990 appropriation to enable the NPS to update the C&O Canal Park's facilities guide; (3) a decision to establish the Monocacy Aqueduct account within the C&O Canal Fund; and (4) authorization for the newsletter editor to buy 10,000 envelopes.

The next Board meeting will be at the Glen Echo Town Hall on Sunday, April 2, at 1:00 p.m.

- - Jane Larsen, Secretary

.....



The Mule

In August of last year, I communicated with *The Washington Post* asking permission to publish two articles which Ken Rollins had provided in reference to Justice Douglas. Permission was received and I am pleased to include the articles below:

Plaque for Justice Douglas Unveiled on C&O Canal Bank

It is a refuge . . . a long stretch of quiet and peace at the Capital's back door . . . come with me . . . walk the 185 miles.

—Justice William O. Douglas on the C&O Canal, Jan. 19, 1954.

By Kirk Scharfenberg
Washington Post Staff Writer

A bronze plaque extending to future generations the invitation by Supreme Court Justice William O. Douglas to hike the length of the C&O Canal was unveiled yesterday in a brief and informal ceremony on a dusty bank of the canal in Georgetown.

"There are few people on the face of the earth that don't associate the name of Justice Douglas with the canal," said Kenneth S. Rollins, of the C&O Canal Association.

"And rather than present you with a memento of the canal," Rollins told the Supreme Court justice, "we decided to give the canal something of you."

Justice Douglas' invitation to walk the canal was origi-

nally extended to the editors of *The Washington Post* after the paper supported in an editorial a plan to run a highway along the canal's banks.

The invitation was accepted and the hike, led by Douglas, became an annual affair, focusing attention on efforts by conservationists to have the waterway proclaimed a national historic park. In January, after years of debate and delay, Congress enacted the necessary legislation.

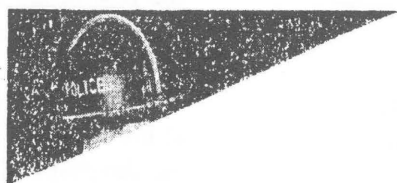
"It certainly was not a one-man venture," Douglas said yesterday after the plaque was unveiled. "Thousands of people could sign affidavits about aching feet and blisters, the hot days

and the wet days we tramped together."

Russell Dickinson, head of the National-Capital Parks, was present at the ceremony, and Douglas suggested to him that the next project along the canal should be the construction of camp grounds for inner-city children.

A representative of the Interior Department presented the 72-year-old Douglas with a bronzed hiking boot to commemorate his work for the canal. It was accepted by his young wife, Cathy.

The plaque, inscribed with portions of Douglas' 1954 letter to the *Post*, is hung on the rear wall of the new Canal Square commercial complex beside the towpath at 31st Street NW.



POST 6-14-71

Copyright 1971, *The Washington Post*

'Level Walkers' Trod Again

By Grant Conway
Past President, C & O Canal Association

THE TOWPATH of the C & O Canal is again crawling with "Level Walkers."

On one level walk last week, I joined 96 enthusiastic upstate Marylanders (members of the C & O Canal Club of Williamsport).

So intense is interest in the new project, the Rev. Ronald Albough of St. Thomas Church, Hancock, apologized to his parishioners last Sunday for not having taken part in the level walk on his section of the towpath the day before.

In an earlier century, when the Canal Company was responsible for an active water transportation route, level walkers patrolled sections of the towpath, looking for trouble in the form of muskrat leaks, and making repairs.

Orville Crowder (Box 7149, Baltimore 18, Md.) organized the 1960 counterpart of that ancient organization,

summed responsibility for a level.

CROWDER saw a need to join the various canal clubs and individual users of the towpath from Washington to Cumberland who are boosters for the establishment of the C & O National Historical Park.

"I thought that it would be difficult to find 30 participants," commented Crowder, who has walked the complete 184.5 miles of towpath several times.

"So many volunteers have offered to cover portions that the towpath is now divided into 70 sections, each about 2.5 miles long. In addition we have 19 experts in their field serving on advisory committees on botany, geology, birds, animal life and history."

The list of level walkers starts with Adm. Neill Phillips in Georgetown and ends with Maryland Tom Contain Jr. in Cumberland.

The walkers list 17 Maryland towns as home addresses mostly upstate. Ten live in Virginia. The Canal Club of Williamsport and Hancock are well represented. And, of course, that intrepid walker, Justice William O. Douglas, has as

LEVEL WALKERS are volunteers who are fond of the Potomac Valley and who are willing to walk their designated sections twice a year and report to Crowder on its condition and attractions.

The condition reports will be of value in this pre-park period when close surveillance by the National Park Service is obviously difficult.

As the NPS staff increases, attention will be turned more to observing and reporting on the history, ferns, flowers and other plant life of each level. The advisory committees will provide technical guidance to users of the Canal park.

Out of this collaboration in time should come what Crowder describes as "a nature reporting chain of considerable value, and a unique public participation in national park activity."

The enthusiastic response to "The Level Walkers" is a sign that the people of the Potomac Basin are recognizing the vast recreational potential of the old canal lands and the need to preserve their attractions in a national park.



Conway

Copyright 1960, *The Washington Post*

The following letter was received in regard to our publication:

WASHINGTON DC

February 1, 1995

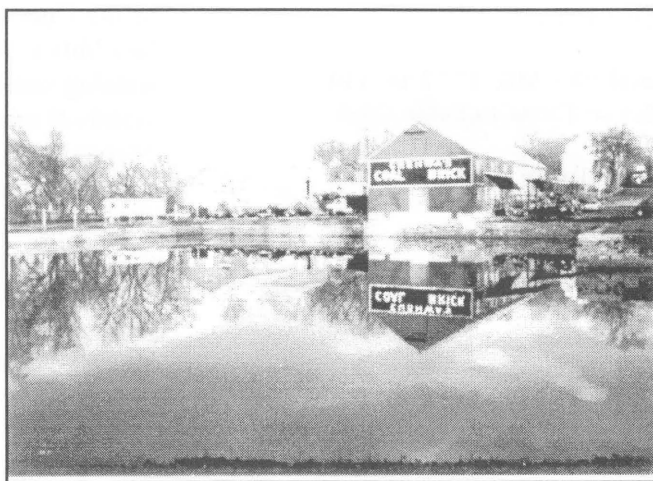
Board of Directors:

I believe it may be about time to take a look at what we supposed to be doing—helping to conserve the natural and historical environment etc.

Do we really need to have a 20 page Newsletter?

Do we really want to publish a Membership Directory? Within hours of publication, I would believe it would be in the hands of the junk mailers. This I do not need.

William A. Schmidt
William A. Schmidt



Photograph of the Cushwa Basin, taken in December, 1994. Shared by Mr. Harold Hankins.

Mrs. Lillian Langdon sent the following letter and photograph to Carl Linden which we thought you'd enjoy seeing.

Sun Nov. 13/94

Dear Mr Linden

Walter Wilt suggested a picture which I am enclosing - I hope it is suitable.

A good mule has fine qualities persevering, steadfast and a hard worker. I am very glad to see the canal is being appreciated.

Glad to help in any way I can.

Best wishes

Lillian C. Langdon



Mrs. Lillian Langdon

We received the following letter (below left) from Mr. James Doherty. Sorry we missed your name, Jim, on the list of Day-hikers for on the through hike.

James Doherty
1710 E. Thornton Drive
Bloomington, IN 47401-6685

January 27, 1995

Mr. Robert C. Perry
Editor, *Along the Towpath*
12713 Knightsbridge Drive
Woodbridge, Virginia 22192

Dear Mr. Perry:

This note is being sent very late because of a move from Chevy Chase to Indiana and the hubbub of renovating a new home. But in case it's not too late: I'm an unlisted day hiker on the 1994 Douglas Hike who now misses the canal very much. I had to forego greater participation in the hike because I was still recovering from a bypass, but I joined the band on the morning of Day Two, marched along with Pat White all day (a very enjoyable way to hike) and obtained a shoulder patch to go with my '89 patch.

After spending the night in Paw Paw, I hiked the Day One portion to Cumberland by myself on Tuesday, completing my second bit-by-bit walking of the entire towpath. I'm just beginning to hike the hills and woods of southern Indiana, but they can't compare with the old ditch.

Anyway, if there's any reason to print a short "List of Participants - Updated" keep me in mind.

Sincerely,
James Doherty

You may be aware that Lil donated a butterfly quilt to the Association in commemoration of the 1994 Douglas Through Hike. Indeed, she also has written about life on the canal and is presently writing a book for children that deals with the subject.

We are fortunate to have a number of volunteers who help to publish and distribute *Along the Towpath* and other Association bulletins. To Carl and Ken, Donald and Helen and their friend Barbara, Hal and Jane, Fred Mopsik, Nancy, Dave, and always, Jane, Thanks.

Please take note that the lead article in the December 1994 issue of ATP was authored by Hal Larsen. Thanks, Hal, for this as well as your many contributions.

There are many activities ahead this year in which we hope you are able to take part.

See you *Along the Towpath*.

We apologize for any errors and welcome the opportunity to correct them.

- - RCP

Those of you who participated in the 1979 Justice Douglas Through Hike may remember retired tugboat captain, Walt Meseck. Carl Linden received a letter from Mr. Meseck which we have included, in part, below. Walt participated in many Association activities and extends his greetings.

.....I well remember the two Douglas Hikes I took, one from Cumberland to Washington and the other from Williamsport to Washington. (Was getting new teeth which accounted for the short hike.) Both of these hikes were to me the most enjoyable, (if that is the word) ones I have ever taken. To me everything was perfect. I really enjoyed them.

The article on Page 16 of the current "ALONG THE TOWPATH" was of particular interest to me since I have made at least 9 trips with ONTARIO-WATERWAYS over the years having covered every route they do. Just last year I did two, one from Montebello (down river from Ottawa) to Kingston on the Rideau Canal and the other from Peterborough to Kingston, I am signed up for another this year from Big Chute to Peterborough. I have done this section several times but this year they have lengthened the "KIWARTHA VOYAGER", added more rooms and rubber mounted the engines. In addition to these trips, this year I am also signed up with MID-LAKES NAVIGATION to make three trips with them. One, a two stage, end to end trip on the Erie Canal and a shortie on the "EMITA II" from Syracuse to Seneca Falls and back.

The ALONG THE TOWPATH article seemed to go hand in hand with an article in AMERICAN CANALS (I belong to the American Canal Society) that also ran an article on the Trent Canal.

Most Sincerely,
Signed *Walter*

REPORT ON ARCHIVES

Work continues at a slow pace at the Association's archives facility at Ferry Hill. Owing to low membership interest in the project and the long travel distance to the site, there has been little volunteer response to appeals for help in collating and preserving the collections. Five Association members have to varying degrees contributed time during the past year. By far the greatest contribution has been made by Mario and Anne Abbate, who have spent one day a week in copying and filing the large Durham collection.

At the present time, the following collections have been deposited at the archives: Durham, Rottier, Blackburn, Meseck, Donnelly, Stevenson and Hahn. They comprise documents, photographs, color slides, maps, engineering drawings and newspaper clippings. In addition, we have many small contributions from individual donors. Some collections are larger than others. The major ones are those contributed by Tom Hahn and the late Jack Durham. All the collections together provide valuable documentary historical information on the Association and to a substantial degree on the canal. The Durham papers include letters and studies, mostly original copies, by Benton MacKaye, the eminent conservationist and forester who founded the Appalachian Trail.

Owing to the the substantial archival contributions, much more than I expected, the space at Ferry Hill is filling up, and we will soon have a serious problem. Although many documents and photographs already have been delivered to the archives by Tom Hahn, we still have in our possession but not yet deposited at the site his major photographic collection. In addition, he expects to deliver additional holdings to Ferry Hill. We will also soon be moving the Association's files to the site, so we must make room for yet another cabinet. Furthermore, we already need additional filing space for the archival holdings, including a large flat-file container to hold maps, engineering drawings and whole newspapers. We will soon reach the point where we will have no more room for cabinets.

Maintaining an archive is an expensive operation. Aside from the capital investments--computer, printing and copying equipment--the supplies used in archival work are unusually costly. Acid-free file folders and mylar containers for photographs cost far more than ordinary standard products. Substantial financial outlays are sure to continue as long as we have collections to collate and preserve.

At the moment we are engaged in making preliminary inventories, copying, numbering and filing the individual items, and preparing for a computerized inventory with a keyword search capability. With a little help from Karen Gray, who knows I'm not a computer nerd, I expect soon to place the Durham collection in this file.

Owing to the many archival materials, the few volunteers, and the inconvenient site, it will take years before a usable archive can be established.

- - Hal Larsen

Editor's Note: Hal prepared the lead article for the December 1994 issue of the newsletter. Thanks Hal. We all missed your presence at the annual meeting and trust you are feeling better.

Along the Towpath is published in March, June, September, and December by the C & O Canal Association. A newsletter subscription is included with membership.

Articles for publication should be received by the 15th of the month prior to publication.

Please mail articles to:

Robert C. Perry
Editor, *Along the Towpath*
12713 Knightsbridge Drive
Woodbridge, Virginia 22192

Annual membership dues are \$15 individual, \$20 family, and \$25 patron, assessed on a calendar-year basis. Dues should be mailed to the C & O Canal Association, P.O. Box 366, Glen Echo, MD 20812-0366.

C & O CANAL ASSOCIATION

1995-1996 Association Officers

President:

Carl A. Linden 6404 Ridge Drive
Bethesda, MD 20816 301-229-2398

First Vice President:

Thomas L. Perry 116 S. Conococheague Street
Williamsport, MD 21795 301-223-7010

Second VP & Level Walker Chairperson:

Keith Kridenoff 1725 Red Oak Road
Baltimore, MD 21234 410-661-8285

Secretary

Rachael L. Stewart 5914 N. Washington Boulevard
Arlington, VA 22205 703-237-4727

Treasurer

David M. Johnson 9211 Wadsworth Dr.
Bethesda, MD 20817 301-530-7473

Information Officer

Helen Shaw 8721 Burning Tree Rd.
Bethesda, MD 20817 301-365-1933

Board of Directors: (Terms expire in 1998) William J. Evans, Karen M. Gray, Fred I. Mopsik, Gary M. Petrichick, Peggy Weber. (Terms expire in 1997) William D. Bauman, John Frye, Norma Hendrickson, Ellen Holway, Lyman Stucker. (Terms expire in 1996) Charles Ayres, Tom Conlon, Nancy Long, Ken Rollins, Elizabeth Scott.

Editorial Staff

Editor:

Robert C. Perry 703-590-5568

DIRECTORY C & O CANAL NHP TELEPHONE NUMBERS AND PERSONNEL

C & O CANAL NHP HEADQUARTERS

Box 4, Sharpsburg, MD 21782 301-739-4200

Superintendent
Assistant Superintendent
Chief Ranger
Admin Officer
Asst. Ch. Ranger & Chief, Visitor Protection Branch
Chief, Natural Resource Mgmt Branch
Chief, Cultural Resource Mgmt Branch

Douglas Faris
Terrie Savering
Keith Whisenant
Christine Streng
Kevin Fitzgerald
Patrick Toops
Susan Trail

Chief, Interpretation Branch
Chief of Maintenance

Gordon Gay
Bob Hartman

PALISADES DISTRICT

11710 MacArthur Blvd, Potomac, MD 20854
301-413-0024

District Ranger
Supv Ranger - Fee Collection
Supv Ranger - District Interpretation

Tom Nash
Terry Barbot
Clyde Bell

GEORGETOWN VISITORS CENTER

1055 Thomas Jefferson St, Washington, D.C. 202-653-5844

Park Ranger - Subdistrict Interpretation Kathy Kupper

Great Falls Tavern Information 301-299-3613
Park Ranger - Subdistrict Interpretation Nancy Brown

The Palisades District begins at Milepost 0 (Tidelock) and continues to Milepost 42.19 (Monocacy River).

WESTERN MARYLAND DISTRICT

District Ranger Vacant 301-739-4200 x237

Monocacy Subdistrict
Conococheague Subdistrict
Four Locks
Paw Paw
Bill Orlando
John Bailey
Bob Gray
Rick Erisman

Supv Ranger - District Interpretation Martin Gallery 301-678-5463

Williamsport Subdistrict Interpretation Fred Viers

HANCOCK VISITORS CENTER

326 East Main Street
Hancock, Maryland 21750
301-678-5463

Park Ranger - Subdistrict Interpretation Sherilyn Seyler

CUMBERLAND VISITORS CENTER

Western Maryland Station
Cumberland, Maryland 21502
301-722-8226

Park Ranger - Subdistrict Interpretation Rita Knox

The Western Maryland District begins at Milepost 42.19 (Monocacy River) and ends at the Canal Terminus, Cumberland, Milepost 184.5.

OTHER USEFUL TELEPHONE NUMBERS:

Georgetown Boat Operation
202-653-5844
Abner Cloud House
202-472-2679
Fletcher's Boat House (Concessionaire)
202-244-0461
Canal Clipper, Great Falls Tavern
301-299-2026
Swains Lock (Concessionaire)
301-299-9006

CALENDAR OF UPCOMING EVENTS

<u>Date</u>	<u>Day</u>	<u>Event</u>
Monthly	Wed, Sat	<i>Sights and Sounds of the Seasons</i> nature walks are scheduled four times monthly on the first and last Wednesday and Saturday. Meet in Great Falls Tavern at 10 a.m.
Apr 1	Sat	VIP Day. Meet at Riley's Lock (Seneca) 9:00 a.m. Repair landscape repair and vegetation control in lock. Call Joan Paull (301-384-8584) or Terry Barbot (301-299-3613) for details.
Apr 1	Sat	Earth Day. Clean up in Hancock area. Contact Keith Kridenoff (410-661-8285).
Apr 2	Sun	Board Meeting, Glen Echo Town Hall, 1:00 p.m.
Apr 29	Sat	41st Anniversary Justice William O. Douglas Hike , Oldtown to Paw Paw Tunnel. See details and registration form in this issue.
May 6	Sat	VIP Workday - 9 a.m. to noon. Meet at Great Falls Tavern to work with towpath or canal structures. For details call John Lindt (301-469-6381) or Ranger Terry Barbot (301-299-3613).
May 13	Sat	C&O bike ride. Meet at Riley's Lock at 9:00 a.m. Ride along the towpath to Monocacy. Return via country roads (moderate hills) thru Dickerson, Poolesville to Rileys Lock. Bring your own lunch. Contact Mario Abbate (301) 540-6974.
Jun 3	Sat	VIP Workday - 9 a.m. to noon. Meet at Great Falls Tavern for towpath work. For details call John Lindt (301-469-6381) or Ranger Terry Barbot (301-299-3613).
Jun 10	Sat	Canal Commission meeting.
Jun 17	Sat	Canoe from Violettes Lock to Great Falls. Ideal introduction to canoeing - great for old-timers, too. Contact Carl Linden (301) 229-2398 or Ken Rollins (804) 448-2934.
Jun 25	Sat	Board Meeting, Williamsport Library, 1:00 p.m.
Jul 1-4	Sat-Tue	VA'95 - Appalachian Trail Conference biennial meeting in Harrisonburg, VA. The Association will have a table in the exhibit hall. Contact Jane Larsen (703-356-1809).
Jul 8	Sat	Canoe the River from Brunswick to Monocacy landing. Contact Carl Linden (301) 229-2398 or Ken Rollins (804) 448-2934.
Jul 15-16	Sat-Sun	Cumberland Canal Boat Festival. Contact John Millar (301-729-3136)
Aug 6	Sun	Board Meeting, Glen Echo Town Hall, 1:00 p.m.
Aug 26-27	Sat-Sun	Williamsport C&O Canal Days. Contact Tom Perry (301) 223-7010.
Sep 2	Sat	VIP Workday. Details later.
Sep 9	Sat	Canal Commission meeting.
Sep 12	Sat	BIRD HIKE: Contact Pat Schindler (703-281-3399).

<u>Date</u>	<u>Day</u>	<u>Event</u>
Sep 16-17	Sat-Sun	Annual overnight Paw Paw bends canoe trip. Contact Carl Linden (301) 229-2398 or Ken Rollins (804) 448-2934.
Sep 16-17	Sat-Sun	Hancock Apple Festival. Contact John Popenoe (301-678-6379).
Sep 24	Sun	Board Meeting, Tom and Linda Perry's, 116 Conococheague St., Williamsport, 1:00 p.m.
Oct 2-6	Mon-Fri	1995 International Historic Canals Conference & First Annual Southern Canals Conference. Augusta, Georgia.
Oct 7	Sat	VIP Day. Details later.
Oct 7-8	Sat-Sun	Brunswick Railroad Days
Oct 21	Sat	Annual Heritage Hike - Nolands Ferry to Brunswick. Details later.
Dec 2	Sat	Annual "FROSTBITE" HIKE. Contact Ken Rollins (804-448-2934).
Dec 3	Sun	Board Meeting, Glen Echo Town Hall, 1:00 p.m.
Dec 9	Sat	Canal Commission meeting.

1996

Feb 4	Sun	Board Meeting, Williamsport Library, 1:00 p.m.
Mar 2	Sat	C & O Canal Association Annual Meeting, Williamsport
Mar 9	Sat	Canal Commission meeting
Apr 7	Sun	Board Meeting, Glen Echo Town Hall, 1:00 p.m.
Jun 27-30	Thur-Sat	World Conference. Birminham, UK. Dates provisional.

.....

CALLING ALL 1994 WILLIAM O. DOUGLAS HIKERS

At the annual meeting on Military Day (March "Forth"), some of us that were on the 1994 Douglas hike reminisced about the two weeks we had spent together last April. It would be wonderful if we had a collection of the favorite memories of each person.

Well, we can. I accepted a challenge from our Poet Laureate to collect and organize for publication any and all writings that hikers would send to me or to Carl Linden. Actually, it's not that open-ended. Writings should be at least a paragraph long but not more than one page. I will accept diskettes with Word-Perfect, I will accept typed material, I will accept handwritten material, I will accept FAXed material. But I will not accept after May 15. Target date for publishing is the last half of June.

"What to write about!" That's always the big question. Some possibilities are whether the hike was exactly as you expected or

were there were some surprises? Or you could write about a single incident on the hike or an overall feeling about the hike. Poetry or prose, humor or straight.

I would like to have material from everyone who was on the hike. That includes through-hikers and day-hikers. That includes non-hikers (such as drivers and organizers) as well as hikers. If both husband and wife were there, let's hear from both. Simply, if you were there, let's hear from you.

You can send the material to me or to Carl Linden. My address, phone number, and FAX number are as follows:

Richard D Stoll
9616 Hillridge Drive
Kensington, MD 20895-3158

Phone: Day: 301-986-4870 ext 227
Evening: 301-946-8435
FAX: 301-652-1749

MINNIE'S ISLAND

On December 3, 1994, title to Minnie's Island was conveyed to the Potomac Conservancy. There is a long story behind both the conveyance and the Conservancy.

Minnie's Island is one of the (then) privately owned Potomac Islands inside the Beltway. It has a history of private ownership at least to the turn of the century when one of its owners evidently gave it her name.

The Island comprises approximately 8 acres parallel to the Canal just below Lock 8. Although it is close to the towpath, it is accessible only by boat. It has a number of trails and hosts an astonishing variety of plant and animal life and probably has archeological artifacts as old as any in the East. The island will be used as a living laboratory by various interested groups. It will eventually be conveyed to the National Park Service.

At the North end of Minnie's Island, facing the towpath, the Conservancy has placed a bronze plaque dedicating the island to the memory of Christopher Reuss, son of one of the three owners who donated the island. Christopher Reuss was an avid kayaker and nature lover who actually lived on the island for about two years. He lost his life to a boating accident in 1986.

The Potomac Conservancy came into being as a result of Senator Robb's desire to "clear his view" of the River. The Robb estate in Virginia is roughly across from the Maryland - D.C. line. What the Senator did was so notable to the members of the Canoe Cruisers Association that they got the Press involved to show the fallen trees on the slope (somewhat resembling the Mount Saint Helens destruction or the *clear cutting* operations in the Cascades of Washington State). There were reports that some of the felled trees actually ended up in the River. Canoe Cruisers are regularly in the Gorge (Great Falls to Chain Bridge) and were quick to notice.

Those who view the Virginia shore from the Gorge - canoeists, kayakers, and hikers - or who live across in Maryland are quite aware of the impact of use by Virginians across the River. (Have people on the Virginia side ever considered what comparable conduct on the Maryland and District side would have on *their view*? Do they appreciate their good fortune that their view is largely protected by the C & O Canal National Historic Park?)

Because of the cutting, the Canoe Cruisers recognized the urgency for serious efforts to protect the entire South shore of the Potomac through some system of easements. A committee surveyed the various environmental organizations, but found none in a position for such an undertaking. The Nature Conservancy would have been ideal, but it is limiting its efforts along these lines, particularly where multi-state and agency jurisdictions are involved. Other organizations had rather limited areas of interest or were not qualified to hold easements; hence, the formation of the Potomac Conservancy.

The conveyance of Minnie's Island started with one of its first official acts after the incorporation of the Conservancy (latter part of 1993) with the appearance of the *Sky Crane* to remove the remains of steel girders in the River just below the American Legion Bridge (perhaps discarded by some of the Beltway contractors?).

The *Sky Crane* had just replaced the statue on top of the Capitol Building and its operators were approached as a public relations *top off* by taking the *junk* out of the River. They were receptive, but pointed out that ground-crew help would be needed. Since the *Sky Crane* was involved, the George Hyman Construction Company agreed to furnish ground-crew and the flat-bed truck. In all, about 50 people were involved in removing 13 tons of *junk*.

Something like the *Sky Crane* attracts attention. Margaret Reuss (Mrs. Henry, and mother of Christopher) happened to be on Minnie's Island that day, in sight of the bridge. Her reaction was "Hey, somebody is actually doing something about the River!" She inquired around and was finally directed to Paul Rosa, Executive Director of the Potomac Conservancy. When she called and identified herself as owner of Minnie's Island and said she had seen the operation, the reaction was *maybe she'll grant a scenic easement*. Little did anyone suspect she would be offering the Island as a gift from herself, Johanna Reuss Barkerville (granddaughter), and Barbara Miller (associate of Christopher Reuss in law practice).

Representing the National Park Service, John Parsons praised the Conservancy's accomplishment as an outstanding example of what citizens can do instead of looking to Government. He emphasized the need for more citizen participation in supporting our Park heritage, pointing out that increasing restrictions on public funding will make such public-spirited acts more critical.

Well over 200 people attended the dedication. Canoe and raft shuttles were operated by the Canoe Cruisers Association. Refreshments and food were provided by Coca-Cola, Grevey's Restaurant, Utz Foods, Old Heurich Brewery, and the *Kayakers and Canoeists Auxillary of Brookmont*.

Sidelight: When Mrs. Reuss boarded a raft for her passage, she ordered her dog Jenny (who considers herself one of the owners) to swim, as she usually does. Jenny took one look at the cold water and stepped back. A few minutes later, she passed me on the Island trail - bone dry. When I commented on it, someone explained that after her boss left, Jenny simply took the next boat.

The following day, Sunday, December 4, the island was opened to the public. The Potomac Conservancy provided hosts and guides. The Canoe Cruisers again provided raft shuttles. About 1,000 people came to visit.

- - Ken Rollins

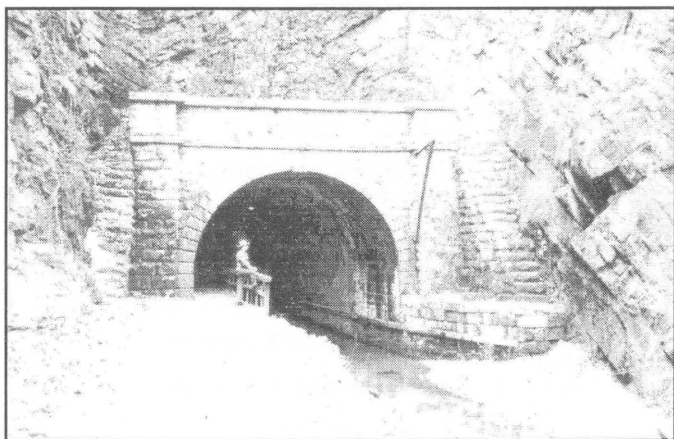
1995 DOUGLAS REUNION HIKE

The Annual Douglas Reunion Hike is scheduled for Saturday, April 29, 1995, and will take place from Oldtown to Paw Paw Tunnel. Busses will depart the Paw Paw Tunnel parking lot at 10:00 a.m. and make one stop enroute at the Town Creek Aqueduct for those hikers wanting to hike a shorter distance.



Looking east from Lock 69 at Oldtown

The towpath distance for the hike is 10 miles, starting at Lock 70 (mile 166.7) and proceeding to the Paw Paw Tunnel parking lot (mile 156.2). The hike commencing at Town Creek Aqueduct (mile 162.34) is six miles ending at the parking lot. You can make this a longer hike by walking through the tunnel and back over the top of Tunnel Hill to the parking lot. For those walking through the tunnel to the marvelous view of the cut on the down-stream side, a flashlight is recommended since the tunnel is not illuminated except for natural light entering from the ends.



(1961) C&O Canal Association Photo from the Tom Hahn Collection. Eastern Portal of Paw Paw Tunnel.

Bus fare will be approximately \$2.00. Lunch on your own, whenever you are ready and wherever you want. A banquet will follow in the American Legion Hall in Paw Paw, West Virginia. Reservations are not required for the hike, but must be made for the dinner. A registration form is included as a flyer in this issue. Happy hour will commence at 4:30.

Please refer any questions to hike coordinator Sonny De Forge, 301-530-8830.

- - Fred Mopsik

.....

ASSOCIATION MAPPING PROJECT

Newer Association members are likely unaware of an excellent set of C&O Canal maps that have been out of print for some time. The atlas, based on surveys done by the late Orville Crowder and published by William Clague, included thirty-nine pages of text and tables, and twenty-three maps covering the entire canal. There is no comparable available publication with the clarity or wealth of information on access and facilities.

Our Association, through the efforts of Ellen Holway, has reached agreement with Mr. Clague and is about to embark on a project to update and publish the maps using his originals. We have contacted park staff and will work closely with them to ensure continuity with their documents.

The first step is to define the scope of the project. Initial review has revealed a number of changes since the last edition and a field survey is scheduled for early summer to identify these along the Canal itself. Access points and local road network data will require a more extensive effort, so as work progresses and needs are defined, more members will be called upon for assistance. While a tentative timetable of three years has been established, a product could be possible much sooner.

Members fortunate enough to possess an original copy and having suggestions or changes can call me at (716) 268 5187, or drop a line to 36 Willets Avenue, Belmont, NY 14813.

- - Gary M. Petrichick

.....



THE ASSOCIATION WELCOMES NEW
MEMBERS SINCE 12/4/94

JOHN F. BARR	CLEAR SPRING MD
NICK BARTALOMEIO	ARLINGTON VA
MARC BOCHY	CUMBERLAND MD
WILLIAM E. BOND	BELTSVILLE MD
DAVID BROWN	GAITHERSBURG MD
MICHAEL D. COREN	GAITHERSBURG MD
MRS ELWOOD DAVIS	WASHINGTON DC
CAROLYN DE LUCA	ARLINGTON VA
SUZANNE DE VORE	ARLINGTON VA
PENELOPE & RICHARD DOOLITTLE	BETHESDA MD
RICHARD J. DRAKE	CHEVY CHASE MD
JOHN E. DRURY	WASHINGTON DC
PAUL & JANE ENGELSTAD	BETHESDA MD
GEORGE ENGLISH	SILVER SPRING MD
ANNA ERDMAN	BETHESDA MD
CHERYL FINDLAY	ANNAPOLIS MD
ANNE L. GORMER	CUMBERLAND MD
ERNEST J. GREEN	POTOMAC MD
HAROLD HANKINS	CHAMBERSBURG PA
WAYNE HARGY	FROSTBURG MD
WILLIAM L. HEMPHILL	ARLINGTON VA
ROBERT G. HILTON	WOODBRIIDGE VA
NORMAN & DIANA HUDSON-TAYLOR	GLEN ECHO MD
KAY KAUTZ	ROCKVILLE MD
JOE KOCHENDERFER	
	HAVRE DE GRACE MD
R. THEODORE LEACH	LINTHICUM MD
J. MICHAEL LEWIS	RALEIGH NC
ERIC O. LINDEN	WINTER PARK FL
LORRAINE MINOR	CABIN JOHN MD
DONALD O. NEVINGER	ALEXANDRIA VA
JAMES A. NOONE	FAIRFAX VA
DENNIS M. & KIM A. O'CONNELL	COLLEGE PARK MD
COL. WILLIAM H. PARKHILL	SAN JOSE CA
BRUCE PERRIGO	LEONARDTOWN MD
HARRIET S. PERRINE	BURKE VA
HEIDI PERRY	TEMPLE TERRACE FL
LAURIE ANN PHILLIPS	ARLINGTON VA
RICHARD P. POREMSKI	BALTIMORE MD
WILLIAM & GERALDINE PRICE	BALTIMORE MD
MARY A. RILEY	MYERSVILLE MD
MICHAEL RINEHART	HAGERSTOWN MD
BARBARA ROBINSON	WASHINGTON DC
JOSEPH Y. RUTH	ARLINGTON VA
HAROLD & ANGELINA SILVER	BETHESDA MD
DR & MRS GEOFFREY SIMON	ROCKVILLE MD
LEO & MARY SUE SNARR	WOODSTOCK VA
JAMES B. SPARKS, JR.	BETHESDA MD
RONALD T. STEVENSON	BALTIMORE MD
MISS PAULA M. STRAIN	ROCKVILLE MD
ROBERT W. SWOPE	ROCKVILLE MD
KARL J. TAMMARO	BALTIMORE MD
WILLIAM TAMMARO	SPRINGFIELD VA
BARRY & SHEILA TAYLOR	POTOMAC MD
CHARLES TOWNSEND	WOODSTOCK NY
JAMES VAUGHN	MT. PLEASANT PA
DONALD C. VIOLETTE, JR.	WASHINGTON DC
DIANE & DAVID WEISZ	BETHESDA MD
JACQUELINE WILSON	MYERSVILLE MD

The Association wishes to acknowledge with
gratitude those folks who have contributed to its
various funds.

CONTRIBUTORS TO THE DAVIES FUND
THRU 3/3/95

TERRY R. BETZER	LAUREL MD
BOB & DONNA BOIES	WASHINGTON DC
MR & MRS LOUIS BOOCHEVER	BETHESDA MD
NANCY ANN & BLAIR T. BOWER	ARLINGTON VA
JIM & SALLY BRYANT	ANNANDALE VA
JOAN C. BURKE	BALTIMORE MD
GERALDINE H. DAVIES	FALLS CHURCH VA
JOHN & DIANA DEL VECCHIO	ITHACA NY
EMMA R. DIETER	WASHINGTON DC
RALPH DONNELLY	HANCOCK MD
RICHARD N. DUBIN	ROCKVILLE MD
MRS C J S "JACK" DURHAM	GREAT FALLS VA
JOHN FRAGALE	ARLINGTON VA
FRANCES A. GALLEGOS	WHEATON MD
KAREN M. GRAY	WASHINGTON DC
NORMA K. R. HENDRICKSON	SILVER SPRING MD
MRS JUNE L. HENSON	ROCKVILLE MD
JOHN F. HOSTIE	ARLINGTON VA
FRANCIS M. HUGO	ARLINGTON VA
JANE T. LARSEN	MCLEAN VA
CARROLL E. MORGAN	POTOMAC MD
DOUG MUSSEN	KEYSER WV
BEJAY MYERS	SILVER SPRING MD
ROBERT & JANE PERRY	WOODBRIIDGE VA
MRS. PATRICIA SCHINDLER	VIENNA VA
SIDNEY M. SKJEI	CHANTILLY VA
LEONARD & JOYCE SKOGLUND	FAIRFAX VA
JACK & MADELINE SMITH	FREDERICK MD
HOWARD W. SOLOMON	BETHESDA MD
JACK & FRANCES STICKLES	CHEVY CHASE MD
PAUL W. "BIGFOOT" TOURIGNY	LEWISTON ME

C&O CANAL (NPF) FUND CONTRIBUTORS
THRU 3/3/95

ANNE & MARIO ABBATE	GERMANTOWN MD
TERRY R. BETZER	LAUREL MD
GEORGE BISSET, JR.	BETHESDA MD
MR & MRS LOUIS C. BOOCHEVER	BETHESDA MD
JOAN C. BURKE	BALTIMORE MD
SHARON COCHRAN	WASHINGTON DC
MICHAEL D. COREN	GAITHERSBURG MD
DAVID W. DUNLOP	WASHINGTON DC
ROBERT L. EBERT	CUMBERLAND MD
ROCKWOOD H. FOSTER	WASHINGTON DC
JOHN FRAGALE	ARLINGTON VA
FRANCES A. GALLEGOS	WHEATON MD
KAREN M. GRAY	WASHINGTON DC
GRAHAM & JOANNE HARRISON	POTOMAC MD
JUDITH A. HECHT	WASHINGTON DC
MRS JUNE L. HENSON	ROCKVILLE MD
FRANCIS M. HUGO	ARLINGTON VA
DOT JOHNSON	WASHINGTON DC
ABNER J. KAPLAN	BALTIMORE MD
GEORGE T. KELLER	FOREST HILL MD
JANE T. LARSEN	MCLEAN VA
JOHN & GLORIA LINDT	BETHESDA MD
ORRIN & VIRGINIA R. LONG	FALLS CHURCH VA

HERBERT C. MADISON	WASHINGTON DC
PAUL & RITA MARTH	TAKOMA PARK MD
JOHN C. MARZIANI	GAITHERSBURG MD
CARROLL E. MORGAN	POTOMAC MD
DOUG MUSSEN	KEYSER WV
BEJAY MYERS	SILVER SPRING MD
MARCUS & MARY PAGE	BETHESDA MD
ROBERT & JANE PERRY	WOODBRIIDGE VA
BETTY PETROLA	GAITHERSBURG MD
RICHARD P. POREMSKI	BALTIMORE MD
ROBERT J. REYNOLDS	POTOMAC MD
KEN ROLLINS	RUTHER GLEN VA
SIDNEY M. SKJEI	CHANTILLY VA
LEONARD & JOYCE SKOGLUND	FAIRFAX VA
JAMES B. SPARKS, JR.	BETHESDA MD
RICHARD & ANITA STOLL	KENSINGTON MD
JIM & WANDA TAYLOR	MARTINSBURG WV
PAUL W. "BIGFOOT" TOURIGNY	LEWISTON ME
MR & MRS SAMUEL A. TUCKER	ARLINGTON VA
JOHN ZIEGLER	HAGERSTOWN MD

MONOCACY AQUEDUCT FUND
CONTRIBUTORS
THRU 3/3/95

FRAN & KATHY ASBECK	BOYDS MD
RONALD & JOANNA BERG	WINCHESTER VA
TERRY R. BETZER	LAUREL MD
BOB & DONNA BOIES	WASHINGTON DC
MR & MRS LOUIS C. BOOCHEVER	BETHESDA MD
JOAN C. BURKE	BALTIMORE MD
GEORGE H. CAMPLAR	MC MINNVILLE OR
FRANKLIN J. COOK	BALTIMORE MD
MICHAEL D. COREN	GAITHERSBURG MD
WILLIAM DEVONMILLE	BLOOMFIELD NJ
RALPH DONNELLY	HANCOCK MD
JOHN FRAGALE	ARLINGTON VA
FRANCES A. GALLEGOS	WHEATON MD
KAREN M. GRAY	WASHINGTON DC
MARTIN L. HEAVNER	IJAMSVILLE MD
MARY L. HEIMER	ASHTON MD
MARLIN, MARTA & ROY HEINTZELMAN	KENSINGTON MD
FRANCIS M. HUGO	ARLINGTON VA
DOROTHY IPAVEC	CLEVELAND HEIGHTS OH
MIKE & LINDA MARMER	GERMANTOWN MD
PAUL & RITA MARTH	TAKOMA PARK MD
MR EARL MCFARLAND, JR.	BETHESDA MD
JIM MILLAR	WASHINGTON DC
WILLIAM J. MOSS	FANWOOD NJ
DOUG MUSSEN	KEYSER WV
ROBERT & JANE PERRY	WOODBRIIDGE VA
RICHARD P. POREMSKI	BALTIMORE MD
JAMES R. PRESTON	MT. LAKE PARK MD
KEN ROLLINS	RUTHER GLEN VA
SIDNEY M. SKJEI	CHANTILLY VA
LEONARD & JOYCE SKOGLUND	FAIRFAX VA
JACK & FRANCES STICKLES	CHEVY CHASE MD
PAUL W. "BIGFOOT" TOURIGNY	LEWISTON ME
MR & MRS SAMUEL A. TUCKER	ARLINGTON VA

- - submitted by William Bauman