

C & O Canal Association

ALONG THE TOWPATH

concerned with the conservation of the natural and historical environment of the C&O Canal and the Potomac River Basin

(Index to articles appears on page 4)

VOLUME XXVIII

MARCH 1996

NUMBER 1

THE FLOOD, FAREWELL, AND VOLUNTEER ISSUE

FLOOD UPDATE

Since the opening of the full 184.5-mile length of the canal, floods and droughts have plagued its operation. The latest Flood of '96 was no exception. As C&O Canal NHP Superintendent Doug Faris stated, "70-80% of the canal was affected" as warming temperatures and rain swiftly melted accumulations of snow measured in feet all along the Potomac and the rivers and streams from which it is fed. The result was a terrific force of rapidly rising water which wreaked havoc along most of the Great Ditch and its structures. In spite of the fact that the area below and including the Great Falls Tavern was most seriously impacted by the flood, as reported by Tom Conlon, the terminus in Cumberland was not. However, the lock house at the Narrows, Lock 72, was damaged, and as can be seen in the synopsis below, the canal sustained damage just a mile-and-a-half east of Cumberland. The destruction is significant from that point eastward to Georgetown.

The special Flood of '96 issue of *Along the Towpath* contained a report of flood damage which was the result of a comprehensive survey performed by the NPS. Superintendent Faris, addressing the annual meeting of the C&O Canal Association, provided slides and an updated report on the damage. Rangers Clyde Bell and Nancy Brown also attended and provided us with the following updated synopsis (dated February 27, 1996) of areas open at that time:

Georgetown, mile 0 to Fletchers Boat House, mile 3.1--OPEN TO BIKES
Lock 10, mile 8.7 to Widewater, mile 12.2--OPEN TO BIKES
Sycamore Landing, mile 27 to Monocacy River, mile 42
Monocacy river, mile 42 to Noland's Ferry, mile 44.5
Brunswick, mile 55 to Lock 31, mile 58
Lock 37, mile 66.9 to Snyder's Landing, mile 76.6
Potomac Fish and Game Club, mile 93.8 to Williamsport, mile 99.8--OPEN TO BIKES
Williamsport, mile 99.8 to mile 106
Four Locks, mile 108.6 to Hancock mile 125
Note: No access at McCoys Ferry or Little Pool. Access at Hancock at old Route 522 bridge.
Fifteen Mile Creek, mile 141 to Spring Gap, mile 173
Mile 174 to Offut Street, mile 181.7
Mile 183 to terminus, mile 184.5

The Park Service cautions that visitors to these areas should wear sturdy footgear. The towpath is rough and covered with silt or mud and some debris may be on the path. Bicycles are allowed only where indicated and all HBOs remain closed. The Park closes at dark.

The severity of damage caused by the Flood of '96 has stirred people into action with financial contributions, volunteer labor, and other resources to restore the canal. The Association is grateful for the overwhelming support of its members and notes with pleasure the coverage afforded by the *Washington Times*. We should also commend the work of the Potomac Conservancy. The C&O Canal Association is involved. Here are some examples of how the Association is directly involved in the restoration:

FLOOD UPDATE - continued

- The Board of Directors designated all 1996 C&O Canal Fund contributions for restoration of the canal;
- Carl Linden, Ken Rollins, and other members have attended numerous meetings in which our interest in the canal has been made known, our services have been offered, and the C&O Canal fund as a vehicle has been promoted;
- VIPs led by John Lindt have painted the interior of the Great Falls Tavern;
- Sonny DeForge, Carl Linden, John Lindt, Anne and Mario Abbate, Dave Johnson, and Hal Larsen volunteered on the Channel 4 Volunteer Telethon;
- Association members cleared debris at Lock 6.
- The Association will sponsor an auction of Jack Durham's paintings of canal and river scenes to benefit the restoration;
- The Association will provide supervision for restoration work beginning April 6;
- The Association will support the April 20 March for Parks with registrars and towpath guides; and
- The Monocacy Aqueduct Stabilization and Rehabilitation project continues.

FLOODS

Some of us might question the architects of the canal for having placed the prism and towpath in harms way of so many floods. However, research reveals that, in fact, the designers did take the history of past floods and water levels into consideration as the location of the canal was determined. The Canal was constructed at a level above any flood recorded prior to 1852. In fact, as reported by Elizabeth Kytle in her book *Home on the Canal*, had the flood waters resulting from the storm of 1852 been "2-3 feet lower," the impact on the canal would have been minimal. As it was, one hundred thousand dollars, that is, 1852 dollars, were required to effect repairs and place the canal back into operation.

We've all seen photographs of floods and the resulting damage. Two texts which help the reader to uncover more information about the consequences of floods on the canal are, *The Chesapeake & Ohio Canal: Pathway to the Nation's Capital*, by Tom Hahn and the aforementioned book by Elizabeth Kytle. The following table describes past floods:



Association members stand behind debris cleared from around Lock 6.
-- Photo courtesy Hal Larsen

FLOODS ALONG THE C&O CANAL	
YEAR	DESCRIPTION
1852	Spring. Worst recorded flood to date.
1857	Four floods in this year almost drove the C&O Canal Company to ruin.
1873	Summer drought was followed by 14 days of rain and heavy storms.
1874	Storm covered levels below Dams 4 and 5.
1877	Fall storm demolished the canal. It is said that even though the canal was restored, the C&O Canal Company never recovered.
1886	Three separate floods occurred in less than a month.
1889	The Johnstown Flood demolished the Canal. The Shenandoah River Lock was severely damaged in this year also.
1902	No information available.
1907	No information available.

FLOODS ALONG THE C&O CANAL	
1914	No information available.
1924	Two floods, one right after the other, the first in late March, left the canal in ruin. There was no boating season in this year, or ever again.
1936	Even though the railroad had restored and maintained the canal in good working order after the flood of 1924, a flood and vandalism left the canal in a poor state of repair.
1972	Flood resulted from Hurricane Agnes.
1985	Several areas along the canal were closed .
1996	January flood damages 70-80% of the canal. Damage repair estimate-\$20 million.

Note: If you can provide more details of floods along the canal, please forward information to the editor.

THROUGH THE STORM, A FLOWER

While we lament the works of Mother Nature, the effects of the storm on the canal, and perhaps our own carelessness as tenants of the earth, each of us should revel in the December 18, 1995 announcement by Senators Sarbanes and Mikulski of the approval of funds for the Ford Avenue bridge in Cumberland. This is especially fitting as December 1995 also marks twenty-five years of events leading to the approval of a new bridge into Wiley Ford, West Virginia. The structure will permit vehicular traffic to pass above the canal and towpath. Upon completion, we will rest assured that hikers and bikers can safely transit to and from the Cumberland terminus. Perhaps one day we may even witness a canal boat passing under the bridge.

According to a press release from Senator Sarbanes office dated December 18, 1995, "...the federal government has approved spending \$1.1 million to construct(sic) a new Ford Avenue bridge over the C&O Canal in Cumberland." According to Sen. Sarbanes, the total cost of construction is \$1.69 million. The state reportedly will provide the balance of required funding. In support of the project, Senator Mikulski said, "This project is about more than just building a bridge. It is about building stronger communities, creating more jobs, and connecting people to the unique history and scenic attractions of the C&O Canal." The *Cumberland Times-News* reported that "construction is expected to begin this fall."

While we concentrate our thoughts, resources, and efforts at restoring the canal and its structures to pre-flood conditions, should we not pause and reflect on this event and the good news it brings to Cumberland and to us the users of the canal?

- - R.C. Perry



The Western Terminus at Cumberland. Photo courtesy Patrick Stakem

In this Issue

<u>Article</u>	<u>page</u>	<u>Article</u>	<u>page</u>
Flood Summary	1	Towpaths to Trails	15
Nature Notes	4	Vail Agenda Update	16
President's Column	6	Volksmarchers	16
Minutes of the Board Meeting	6	Secretary Babbit to Hike Towpath	17
Minutes of the Annual Meeting	7	1996 Douglas Hike	17
Annual Meeting Walk	8	Learn about the Canal	17
Association Financial Statements	9	Corrections and Comments	18
Annual Report of Membership Coordinator	10	MEMBERSHIP RENEWAL	18
Annual Report of the Publications Comm.	10	Directory	19
On the Level	11	Calendar of Events	20
Auditor's Comments	13	Farewell from Carl Linden	21
Acknowledgement of Contributors	13	SOS	23
		C&O Store	24

NATURE NOTES

Some 1995 History--December 1995

As 1995 passed into history, the schedule of "Sights and Sounds of the Season" was broken for the first time in more than 20 years by problems other than weather. The extended Government furlough led to cancellation of the last two walks in December 1995 and the first Wednesday walk in January 1996. The road to Great Falls was reopened just in time for the first Saturday walk in January.

More than 500 visits were made to the Park during 1995 to take part in "Sights and Sounds" walks. Some "regulars" try not to miss any of the walks and thus are counted repeatedly. Others come occasionally and some visitors to the area come only once.

A Hungarian botanist and a USDA botanist from North Dakota were one-time participants in the late summer. They were looking specifically for sunflowers blooming locally. With the area's very dry weather last summer, we were unable to find a single sunflower at the time of their visit. In fact, dry weather had so inhibited late summer and early fall flowers that we found practically nothing in bloom.

Subsequently, after returning from a European foray, the North Dakota botanist sent a copy of "Sunflower Species of the United States" listing 10 species for the state of Maryland. Only three of these are listed in "Wildflowers of the C&O Towpath": the thin-leaved sunflower (*helianthus decapetalus*), woodland sunflower (*helianthus divaricatus*) and Jerusalem artichoke (*helianthus tuberosus*).

Special events during the year included a special walk for a Girl Scout Group in April. The girls came from the eastern shore and other parts of Maryland to spend the weekend at Rockwood.

The "regulars" joined in a July picnic at Great Falls. Such picnics have become annual affairs in recent years, bringing together family members as well as regular participants in "Sights and Sounds" walks.

The outstanding special event in which "Sights and Sounds" regulars participated was the canal-long breeding bird census in early June. Our assigned section of the towpath was from Great Falls Tavern to Swain's Lock produced 116 birds belonging to 31 species seen or heard between 6 and 8:30 a.m.

On several occasions, Frank Galvin, a park ranger, brought in his blind hawk to show "Sights and Sounds" participants. As a blind creature, this hawk would have perished without Frank's care. Frank is licensed by the Fish and Wildlife service to care for sick or injured birds. A young grandson is his able assistant.

During March 1995, water in the canal was lowered for repair work in the canal prism. Perhaps the beavers wondered what was happening. At any rate several lined the canal bank on the berm below the stoplock bridge. They seemed unconcerned about the attention they were attracting from towpath walkers.

NATURE NOTES - continued

Several showy orchis plants were found blooming along Gold Mine Tract trails in early spring. Near the junction of Berma Road with a Gold Mine trail near Angler's Inn a wildflower garden was a special delight with its abundant toothwort, bloodroot and rue anemone.

Turtle-head in bloom was a special find in the fall when it appeared on the berm not far below the Tavern. For several years we had mourned its complete disappearance from the location where we had found it previously near the Widewater bridge.

Small flocks of bluebirds, a lone robin, and a yellow-rumped warbler created an excitement among "Sights and Sounds" walkers on a walk in late winter. During a period of high water in the summer, a great blue and a black-crowned night heron displayed their fishing skills at the water's edge as "Sights and Sounds" walkers peered over the railing at the falls overlook.

Small flocks of bluebirds were again a highlight on the first Saturday walk in January walk in 1996. Only three "Sights and Sounds" walkers turned up for that walk...the first after the Government furlough. Nevertheless, the bluebirds and a small flock of cedar waxwings near the Tavern made an auspicious beginning for another year of "Sights and Sounds of the Seasons."

Note: "Sights and Sounds of the Seasons" walks are scheduled by the Park Service four times monthly on the first and last Wednesday and Saturday, starting at Great Falls Tavern at 10 a.m. They are introduced by a brief slide show. The volunteer leaders, all members of the C&O Canal Association are Betty Bushell, Betty Hensen, and Helen Johnston.

POSTSCRIPT--MARCH 1996

All of a sudden, the weather gods remembered it was supposed to be WINTER! Record-breaking snow came with a rush, closing the park that had just been reopened after the government shut-down. A record January snowfall through-out the Potomac valley was followed by a melt-down, hastened by rain. The Potomac rose...and rose, finally reaching many feet above flood stage.

Slowly the river receded, leaving a devastated landscape with much of the towpath and its artifacts in a shambles. In the Widewater area, the river had briefly reclaimed an old channel, breaking down the lower part of the stop-lock's timbers. Above the cross-over near Angler's Inn, the river broke through the towpath to seek its rightful channel again.

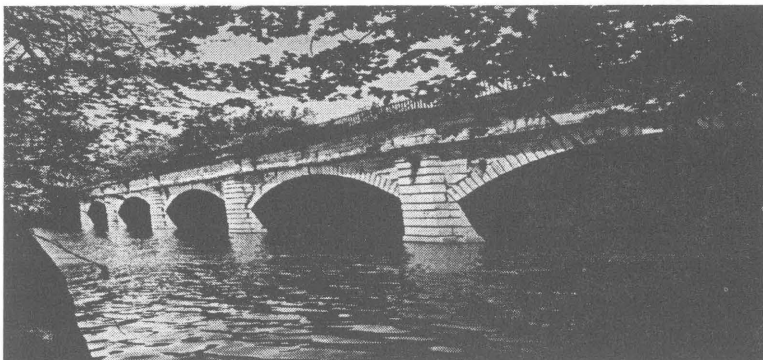
As the grim side of nature faded, many deer tracks appeared on the snow-covered path. Were the deer in human-like fashion coming to find out what happened-or were they there as a part of their regular routine, with their tracks simply more visible in the mud- and snow-covered towpath?

Near the towpath above Carderock, two barred owls looked down solemnly from a perch mid-way up a tall sycamore. Pileated woodpeckers pecked ferociously at slender tree trunks. Downy woodpeckers explored tree-top branches. Crows mobbed a hawk, sending him flying across the canal. The bald eagle's nest high in a tree at the edge of Conn Island apparently withstood the storm, but there was no sign of an eagle. A small flock of cedar waxwings busily searched for dark berries through a tangle of Japanese honeysuckle.

As February progresses, the white-throated sparrows will soon be singing their lonely farewell as they prepare to fly to their summer homes in the north. Skunk cabbage continues to bloom in the swamp, melting snow and ice around it as it creates its own mini-climate. Soon spring peepers will start to "sing," and we can start listening for the phoebe's return.

For the first time in more than 20 years, "Sights and Sounds of the Seasons" walks have had to be cancelled. A few "hard-core" members of the "Sights and Sounds" group are exploring ways to continue. Keep tuned!

- - Helen Johnston



Along the Towpath

THE PRESIDENT'S COLUMN

Expect the unexpected! Just when we think we're facing a normally challenging year, along comes the flood of 1996. We know it can happen at any time but somehow the time is never right. In the words of the late John Lennon, "Life is what happens while you're making other plans".

So now we regroup, pitch in and make the best of a bad situation. It has happened before, it will happen again, and the C & O Canal Association will always be there to assist. If nothing else, more people know of the "old ditch" than ever before. The outpouring of offers to help has been overwhelming. Let us make the most of that. To that end, the Board has directed that all new contributions to the C & O Canal Fund be dedicated to flood recovery efforts, even though another fund has been created by the NPS for that purpose.

At the time of this writing there is much confusion. Damage assessments are being made, and meetings are being held almost daily to map strategy for the recovery effort. As you would expect, the Association is there. Carl and others have done a marvelous and exhausting job, meeting frequently with the Park Staff, the National Park Service, Federal representatives, sister organizations and the media. How long this frenzied pace will continue is anybody's guess, but the bottom line is that we, the C & O Canal Association, will be heavily involved for a long time to come.

Yet we must not lose sight of our current commitments. The Monocacy must be preserved! Not at the expense of the Conococheague or any other park structure, but the continuity of the towpath is too important to ignore and that continuity must be our priority. Separation of the towpath is separation of the Park. We cannot let that occur. With our personal contributions and in talking with the concerned public, we have to remember that we have short and long term goals to address. Yes, the Park must be reopened in its entirety and we will give our all to that end as we have done before, but we will also persevere in our efforts to save that most magnificent of canal structures, the Monocacy River Aqueduct.

Simultaneously, considerable effort is needed to assist the Gelman Library staff at GWU in sorting out the archives. While sometimes tedious, look at this as an opportunity to learn more of the early days of the Association and the Canal while helping serious scholars for generations to come.

With all this, now that we are committed to well over one hundred percent of ourselves, we still have our hikes, canoe trips, bike rides, festivals, and publications! Life must go on.

So it appears that our legacy is man's arrogance in thinking

nature can be controlled. Yet it is also man's nobility for even attempting a project of the magnitude of the C & O Canal. Whichever, it is ours, and we will do what we must to pass it on to those who follow.

- - Gary M. Petrichick

C & O CANAL ASSOCIATION, INC.

Summary of February 4, 1996, Board of Directors Meeting
Williamsport, MD Memorial Library

The meeting opened with a report and slide show by Park Superintendent Doug Faris reporting on the effect of the January 20-21, 1995, flood on the Canal Park and the efforts undertaken for its repair and restoration. Ranger Nancy Brown is to coordinate volunteer efforts from the Park headquarters, assisted by Bonnie Williams and Gloria Keller; phone: 301-739-4200. There is a Web site for the restoration effort: <http://www.nps.gov/choh/chohphoto.htm>.

The Treasurer, Dave Johnson, distributed and explained his report as of 1/31/96.

The President, Carl Linden, reported on the television and newspaper publicity regarding flood damage and the restoration effort, as well as on meetings he has attended. There was discussion of further publicity and fundraising by (1) obtaining a "CFC" (Combined Federal Contributions) number and (2) a presentation at the World Canal Association meeting in Birmingham, UK in June.

Clyde Bell, Interpretive Supervisor in the Palisades District of the Canal Park, will be a regular attendee at Directors' meetings. He reported that Cumberland and Hancock areas would open around Feb. 10, Williamsport around March 1, Georgetown and its canal boat sometime in April. The Great Falls area and Tavern are closed indefinitely. The Olmstead Island cement bridges withstood the flood, but the boardwalks were damaged. He will develop a fact sheet on the flood and its consequences.

Committee Reports

A. Archives Committee. The Co-chair, Hal Larsen reported that the Deed of Gift to George Washington University's Gelman Library has been signed with the stipulations required by the Board. Committee members will box up the Archives and the University will send a truck to transport the boxes by March 1.

B. Monocacy Aqueduct Fund Committee. The Chair, Carl Linden, reported that he visited the Aqueduct a week after the flood with Bernie Dennis, local chair of the America Society of Civil Engineers and his historian. The Society has 120,000 members nationally; its headquarters are moving to Washington, D.C., and its annual meeting in late autumn will be there. The Board authorized up to \$2,000 for the purchase of specially designed t-shirts for the fund-raising campaign.

Summary, Board of Directors Meeting - continued

C. Program Committee: Sonny DeForge reported that the Douglas Hike is scheduled for April 27. The venue may change because of damage to the towpath.

D. Publications Committee: Re: the membership brochure, Fred Mopsik circulated the brochure mock-up and explained the color scheme and projected printing costs. The Board approved a motion to order 20,000 brochures. Re: mapping project, Gary Petrichick reported that William Clague will do final corrections based on the committee's mark-ups. He asked for authorization of \$12.00 from the Budget Committee for County highway maps. The request was approved. Re: Towpath Guides, Rita Bauman moved that the Board authorize up to \$250.00 for the purchase of Towpath Guides and NPS guides, in the discretion of Joy Bloom, Membership Chair. The motion was seconded, discussed, voted upon, and adopted unanimously. Re: Along the Towpath, Editor Robert Perry reported that a Note will be inserted to contact the Association by telephone regarding the Calendar of Events.

E. Level Walker Committee: No report

F. Membership Coordinator: William Bauman reported that memberships continue to decline.

G. Environmental Committee: Ralph Donnelly (from the Western Area) reported that the Woodmont Rod & Gun Club has been bought by the State, and that a bike path for the area is in the design stage. Fred Mopsik (from the Eastern Area) reported that nothing is new.

There being no additional business, the meeting adjourned shortly after 4:30 p.m.

C & O CANAL ASSOCIATION, INC. MINUTES OF ANNUAL MEETING March 2, 1996, at the Williamsport VFD Williamsport, MD

The President, Carl Linden, called the meeting to order at 2:00 p.m. and reported on significant events of his two-year tenure: the 1994 Douglas Through-Hike, establishment of the C&O Canal Fund and the Monocacy Aqueduct Fund, purchase of Lil the Mule for the Canal Park, production of the Food & Lodging Guide, underwriting the cost of the Park's Facilities Guide and of interpretive fliers for the Park, and establishment of an association telephone number.

The Treasurer, Dave Johnson, reported on the Association's fiscal affairs, notably that income exceeds expenses, and that contributions to both the C & O Canal Fund and the Monocacy Aqueduct Fund exceeded \$10,000 during January-February 1996.

Ken Rollins reported that the Audit Committee found no problems in its audit of the financial records.

Committee reports were made as follows:

1. Membership Coordinator: William Bauman reported membership statistics.

2. Archives Committee: The Co-Chairman, Hal Larsen, reported a brief history of the causes and impetus for the Association's donation of its Archives to George Washington University's Special Collection, housed within the Gelman Library.

3. Environmental Committee: Fred Mopsik, Co-Chair for the lower end of the Canal Park, reported briefly on the status of the Georgetown University-Canal Road access situation. Ralph Donnelly, Co-Chair for the upper end of the Canal Park, reported that the State of Maryland has acquired the Woodmont Rod & Gun Club and will designate part of the land as a Wilderness area.

4. Publications Committee: Helen Shaw reported that although few copies of the Food & Lodging Guide remain, it will not be revised and published until the Canal Park is restored. Likewise for the Clague Mapping Project. The new membership brochure is available now.

5. Monocacy Aqueduct Fund Committee: Carl Linden Chairman, reported that the Douglas Hike this year will also be the official kickoff date of the fund-raising drive, that Gilbert Gude has agreed to be the Honorary Chairman, that a videotape is being developed by Robert Cole, and that T-shirts are being developed by Rita Bauman and Hal Larsen.

6. John Frye reported on the ad-hoc committee organized to develop videotapes of interpretive walks, and detailed the Spring schedule of walks.

7. Program Committee: Sonny DeForge reported that the Douglas Hike dinner reservations cannot exceed 150.

Helen Shaw, for the Nominating Committee, presented the slate of officers nominated. A motion was made to close the nominations for officers and to elect the unopposed officer candidates by acclamation. The motion was seconded, voted upon and passed. By voice vote, the slate of officers was elected, as follows:

President: Gary M. Petrichick
First Vice President: Thomas L. Perry
Second Vice president: Keith Kridenoff
Treasurer: David M. Johnson
Secretary: Rachel L. Stewart
Information Officer: Kate Mulligan

MINUTES OF ANNUAL MEETING - continued

Following extensive discussion of how directors are nominated and elected, a motion to close the nominations was made, seconded, and passed by voice vote. The ballots were collected and tallied. New directors elected were: Charles Ayres, Harold Larsen, Nancy Long, Robert C. Perry, and Patricia White. Ralph Donnelly was elected to fill the unexpired term of Gary Petrichick.

Gary Petrichick, as President, established the "Canal Restoration Committee," to be comprised of Carl Linden and the Executive Committee of the Board, with Carl Linden as its Chair, to continue the Association's efforts in the flood recovery program.

The next annual meeting of the membership will be Saturday, March 1, 1997, at the Williamsport Fire Hall. The meeting was adjourned at 4:45 p.m.

Respectfully submitted,

Rachel L. Stewart, Secretary

ANNUAL MEETING HISTORY WALK

No annual gathering of our Association would be complete without visiting and exploring some of the sites that make the C & O so special. This year we were once again dazzled by one of our own historical experts. On Saturday morning at 10 O'clock, John Frye met a large and rather cold wind-blown crowd at Cushwa basin located at the foot of Potomac Street in Williamsport.

John informed us that about one month earlier we would have been standing in about four feet of water from the Potomac's most recent pilgrimage, though that water level, which compared with the '85 flood, paled in comparison to some of the other really big ones. John also provided maps of old Williamsport and briefed us on some of the development history of the town.

We then made our way, at some risk, through Williamsport traffic and up a small mountain (actually a small hill) to a corner of the town cemetery where John gave us a thoroughly researched "real story" of why the hill is called Doubleday's Hill. It seems that the battery garrison that manned Fort Sumter prior to the first shot of the Civil War relocated to Hagerstown after the Confederates occupied Fort Sumpter. Captain Abner Doubleday (Later General Doubleday-yes, of reputed baseball fame) was ordered to take three of the six battery guns and set up on the hill overlooking the Potomac in Williamsport to get ready for the Confederates. Reportedly, the guns were never fired, but John assures us that that's how the hill came to be named Doubleday's hill.

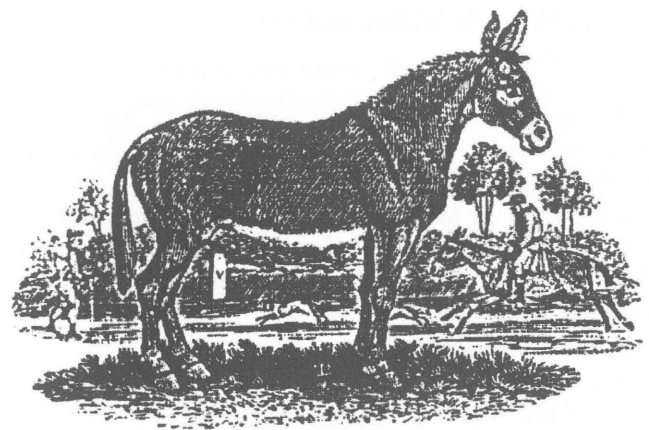
We then walked to the river with a brief information stop on the old Bollman iron bridge that crosses the canal. We viewed the railroad drawbridge built to service the power plant and learned that the old bridge has not been raised since 1923, because of the 1924 flood that sealed the fate of the Canal. One of these days the old drawbridge may be raised to allow canal boats passage, an event that all of us will not want to miss. We then proceeded to the river where John gave us a very thorough briefing about the Confederate retreat from Gettysburg over that very same ground and about how, if the Union generals had followed up the advantage gained at Gettysburg, they could have ended the war right there because the Confederates (50,000 men including many, many wounded) could not cross the river due to very high water. When the Union finally made up their minds to pursue, the river had subsided and the Confederates had made their getaway.

Our last stop, after a long walk across the previously flooded plain, was the Conococheague Aqueduct where John gave us the lowdown on the trials and tribulations of the old aqueduct, such as the time an empty towboat "went over the side".

We in the Association are most fortunate to have individuals such as John Frye who bring alive history and allow us to become better informed about what we as an association are all about.

Thank you John. We are looking forward to your next guided tour.

- - Ken Glace



The Mule

CHESAPEAKE & OHIO CANAL ASSOCIATION, INC.
BALANCE SHEET - December 31, 1994 and 1995

ASSETS	1995	1994
Current Assets:		
Checking Account	\$ 11,618	\$ 8,450
Prepaid Expenses	2,331	2,086
Other Current Assets	150	50
Money Market Fund (Davies Fund)	10,292	8,699
Inventories - Sales Items	1,009	1,787
Fixed Assets- Property & Equipment	<u>6,806</u>	<u>6,308</u>
TOTAL ASSETS	<u>\$ 32,206</u>	<u>\$ 27,380</u>
LIABILITIES & EQUITY		
Revenue for Subsequent Periods	\$85	\$465
Accounts Payable	<u>1,018</u>	<u>163</u>
Subtotal Current Liabilities	1,103	628
Reserve, Davies Fund	10,352	8,699
Accumulated Operating Results	<u>20,751</u>	<u>18,053</u>
TOTAL LIABILITIES & EQUITY	<u>\$ 32,206</u>	<u>\$ 27,380</u>

STATEMENT OF INCOME

	<u>Income</u>	<u>Expenses</u>	<u>Net</u>
Administrative Functions	\$ 15,571	\$ 13,907	\$ 1,664
Sales (Books, T-shirts, etc.)	1,844	993	851
Annual Meeting	2,167	2,348	(181)
Douglas Hike	1,044	722	322
Heritage Hike	<u>1,054</u>	<u>1,012</u>	<u>42</u>
TOTAL	<u>\$ 21,680</u>	<u>\$ 18,982</u>	<u>\$ 2,698</u>

SUMMARY OF ADMINISTRATIVE FUNCTIONS

	<u>1995</u>	<u>1994</u>
INCOME:		
Dues	\$ 15,160	\$ 11,155
Interest and Miscellaneous	<u>411</u>	<u>719</u>
TOTAL ADMINISTRATIVE INCOME	<u>15,571</u>	<u>11,874</u>
Expenses:		
Newsletter & Bulletin	\$ 6,898	\$ 4,242
President	367	167
Secretary	43	407
Treasurer	438	384
Information Officer	15	5
Level Walkers	61	60
Membership Coordinator	834	858
Membership Committee	531	704
Archives Committee	469	471
Nominating Committee	18	16
Publications Committee	0	87
Monocacy Fundraising Committee	122	0
Interpretive Program Committee	61	0
Association Telephone	230	0
Dues & Contributions	150	50
Depreciation & Maintenance	2,170	1,709
Transfer to Davies Defense Fund	500	500
Transfer to C&O Canal Fund N P S Grant	1,000	1,000
Grant to National Park Service	<u>0</u>	<u>1,000</u>
TOTAL ADMINISTRATIVE EXPENSE	<u>13,907</u>	<u>11,660</u>
NET ADMINISTRATIVE OPERATING RESULTS	<u>\$ 1,664</u>	<u>\$ 214</u>

C&O CANAL FUND - NATIONAL PARK FOUNDATION

	C&O CANAL FUND	MONOCACY FUND	TOTAL
Association Contributions, 1994-1995	\$ 2,000	\$ 0	\$ 2,000
Member's Contributions, 1994-1995	<u>1,596</u>	<u>2,897</u>	<u>4,493</u>
Total Contributions	3,596	2,897	6,493
Total Expended in 1995	<u>2,192</u>	<u>0</u>	<u>2,192</u>
BALANCE AVAILABLE - 31 DEC 1995	<u>\$ 1,404</u>	<u>\$ 2,897</u>	<u>\$ 4,301</u>

Submitted by David M. Johnson, Treasurer

ANNUAL REPORT OF MEMBERSHIP COORDINATOR

The following table reflects Association membership at this time for the last 4 years sorted by Membership Type:

Type	3/6/93	3/2/94	3/4/95	3/2/96
Member	364	466	451	411
Family	200	293	303	301
Patron	379	169	141	153
Life	4	4	4	3
Complimentary	51	42	47	36
Commission	5	5	4	4
Totals	1003	979	950	908

While individual Member and Family memberships have shown a gradual increase, we show a gradual decline in total membership, and a dramatic decline in Patron membership. After the March *ALONG THE TOWPATH*, the membership list is purged of nonrenewals and those former members no longer receive Association material.

All of our members received the *Special Edition* of *ALONG THE TOWPATH* in January 1996 titled "THE GREAT FLOOD OF '96". Our Association will be working with the C & O Canal NHP personnel in the restoration of the entire towpath. Specifically, 173 members have indicated a willingness to volunteer in the park. Mr. John Lindt (301/469-6381) coordinates our Volunteer In The Park effort and now has the list of 173 members. If you want to volunteer and are not sure that your name is on the list, or you want to now add your name to the list, call Mr. Lindt right away. We expect working parties to be organized all along the towpath; you should be able to pitch in with your labor or material minimizing the commute.

-- William D. Bauman

PUBLICATIONS COMMITTEE ANNUAL REPORT

We continually receive changes and updates for the Guide to Food and Lodging Along the C & O Canal. We had planned to have a second edition of the guide printed since we are down to our last three hundred copies (out of three thousand originally printed). However, with so much of the towpath not open because of the flood, it does not appear to be a good time to initiate a new guide. In addition, the organization that has the concession for the Park Service to sell publications is in financial difficulty because of the two government shutdowns and so we would not have a merchandising outlet until either a new concessionaire is found or the Parks and History Association gets on its feet again.

We reported last year on the effort to revise William Clague's Towpath Map Book. This revision would update the access points of the towpath and include hiker biker locations, locks, aqueducts and other points of interest. The level walkers were enlisted in the effort and as usual assisted us greatly. Again, however, because of the flood and the damage to the towpath, this effort will be on hold for awhile.

A new membership application brochure has been prepared and is now available. Fred Mopsick headed the effort to create this new brochure and we wish to commend him on the excellent job.

Certainly the most active publication, and one for which the publication committee can take no credit, it all belongs to Bob Perry, is the Newsletter. It gets better and better with each edition. A special thanks to him and, of course, to Jane Perry as well.

-- Helen Shaw



On The Level

By Keith D. Kridenoff
1995 Level Walker Chairman

Thanks to all the level walkers who helped make this another great year for the program. And special thanks go out to the members who walked their levels immediately after the flooding to assess the damage on their sections. Once again your dedication is greatly appreciated. To anyone interested in becoming a level walker, there are a number of openings all along the canal. Please contact me at:

1725 Red Oak Road
Baltimore Maryland 21234
(410) 661-8285

Reports received by the February 5th deadline. The next cutoff is May 5th.

2 - 2.3 to 5

Fletchers to Lock 5

Larry, Sue, Sara, and Kevin Anderson (12/3)

Only a few pockets of erosion. Canal in good shape.

4 - 7.5 to 9.4

Cabin John to Lock 14

Carolyn Reeder (11/18) Charles Bookman (1/28)

Increase of graffiti on overpasses. Cave in of Muddy Branch Culvert enlarged. Some repairs to towpath have been done. (11/18) Most flood damage was below Lock 10. Trail from MacArthur Blvd. to Cabin John was flooded and silted in.

6 - 12.3 to 14.3

Cropley to Great Falls

Ernest Green (11/28) Harry Bridges (11/2) Helen Johnston

Leaves and debris have dammed up ford at mile 13.7. Gap at Widewater has increased. More permanent repairs need to be made.

7 - 14.3 to 16.6

Great Falls to Swains Lock 21

Mark Page (11/21)

Towpath was clear but picked up much trash in recently cut woods.

8 - 16.6 to 19.6

Swains Lock to Pennyfield Lock 22

Paul & Maggie Davis (1/6)

Fresh beaver cuttings at mile 18. NPS has done great job of removing trees and other debris.

11 - 25 to 27.2

Tenfoot Island to Sycamore Landing

Sharon Freedman (10/14)

Recent signs of NPS filling potholes with gravel. Trash cans need to be returned to Sycamore Landing parking lot.

12 - 27.2 to 30.8

Sycamore Landing to Edwards Ferry

Stephen Pollock (1/23)

One hundred foot section of towpath washed out at mile 28.2

and 50 foot section at 29.3. About 15 piles of debris large enough to stop NPS trucks along level.

13 - 30.8 to 33

Edwards Ferry to Milepost 33

Bert Grose (1/3) Dave Gwatkin (12/25, 1/28) Don Groelsema (10/15)

West end of north wall of Lock 25 continues to collapse. Beaver dams at mouth of feeder at mile 32.4 still in place. Level has survived fairly well in light of extensive flooding. Beaver dam at mile 32.8 was destroyed.

14 - 33 to 35.5

Milepost 33 to Whites Ferry

Herbert Madison (11/14)

Turtle Run HBO in good shape. New and well needed sign at Whites Ferry concerning bicycle "etiquette".

15 - 35.5 to 39.3

Whites Ferry to Lock 26

Dick Tibbetts & Herbert Madison (12/15)

Foot deep depression at mile 38.5 could be hazardous to hikers. Recent beaver cuttings between miles 37 and 38.

19 - 48.2 to 51.5

Point of Rocks to Catoctin Creek

Jack, Pat, and Bob Cook (11/4) Lyman Stucker (12/29)

Route 15 bridge being painted with trucks filling parking lot. (11/4) Towpath well drained in this area. Very little birdlife noted. (12/29)

20 - 51.5 to 55

Catoctin Creek to Brunswick

Mario & Anne Abbate (11/17)

Roundhouse at mile 54.7 has been razed with only piles of brick left. Serious ruts in towpath caused by trucks working on bridge at Catoctin Creek.

23 - 60.7 to 62.3

Lock 33 to Dam 3

Howard Soloman (12/31)

Large amount of trash along level with recent beaver cuttings

LEVEL WALKER REPORTS - continued

near mile 61.5.

25 - 65.1 to 67

Dargan Quarry to Lock 37

Don & Carol Juran (11/26)

Extensive breakage and uprooting of trees all along level. NPS has done great job of cleaning up debris. Two large pieces of sheet metal leaning against bottom openings of quarry structure.

27 - 69.4 to 72.8

Antietam Creek to Lock 38

Harry Robinson (12/5)

Large tree across towpath near RR bridge was reported to ranger and removed.

LEVEL WALKER REPORTS - continued

31 - 79.4 to 81.6

Lock 40 to Marsh Run Culvert

Deborah Kistler (9/21)

Most trash collected was at Marsh Run Culvert. Wildlife and birdlife seem to have diminished along this section.

32 - 81.6 to 84.4

Marsh Run Culvert to Dam 4

Bejay Myers & Edith Wilkerson (11/21)

Several downed trees in area with signs of NPS beginning to clear them.

33 - 84.4 to 88.1

Dam 4 to McMahons Mill

William Rosencroft (12/31)

Window in foundation of mill open. Spotted dead deer carcass at mile 88.

38 - 99.3 to 102.3

Lock 44 to High Rock Quarry

Dave Brown (12/2)

Lock 44 under reconstruction. Visitor center at Cushwa basin finished but not yet open.

40 - 105 to 106.8

Nessle RR piers to Dam 5

Bill Hibbard (1/4)

About 1 pickup load of trash was dumped at mile 106.2.

44 - 112.4 to 114.5

Fort Frederick to Ernstville

Jane & Hal Larsen

Towpath dry and in good condition. No trash at all along level. Cleanest yet.

51 - 134.1 to 136.6

Dam 6 to Sideling Hill Creek

John Popenoe (12/2) Robert Swope & Judy McDuffie (12/2)

Lock 55 sign has been vandalized. Basement window board

missing from the house at Lock 56. Beaver activity near Poly Pond.

65 - 173.4 to 175.5

North Branch to Spring Gap

Mary Twigg (4/23, 5/6)

Towpath clear with little trash.

67 - 177.7 to 180.7

Mexico Farms to Evitts Creek

Mary Twigg (12/3)

Aqueduct and towpath in good shape. Spotted Great Blue Heron.

ANNUAL REPORT TO MEMBERSHIP

Level Walker Program

Nineteen ninety five was another productive year for the level walker program. Although the general consensus among the level walkers was that their sections were the cleanest in years, we still managed to pick up 231 bags of trash. Over time, all this hard work has helped to make the towpath a lot nicer place for everyone. There were still reports of the usual trouble spots such as Widewater and the outlet lock at mile 0. On a good note, there were sections up and down the canal that were resurfaced with new gravel. Also it was noted that the park service had been busy removing dead trees and clearing intrusive foliage. Over the course of 1995 we received 162 reports from 102 active level walkers. This constitutes about 486 volunteer hours during some of the worst heat and weather that Mother Nature had to offer. Everyone who participated during 1995 should be commended for their hard work and dedication. This dedication became most evident when one report remarked that because of the mess left by horses and fishermen, they should be banned from "his" level.

We really take our jobs seriously. Unfortunately, we had 8 level walkers resign last year due either to moving away or deciding to retire after years of service to the program. The upside is that we have signed on 11 new members, one of whom walked his level the day he received the packet I sent him. It is fortunate for the Park, that we have this program, because 1996 will be a difficult year. The flooding caused by the melting snow has caused extensive damage to the canal proper. All those levels that were pristine during 1995 are in great need of cleaning and repair this year. I hope all the level walkers will return again to help restore the canal to the beautiful park it once was. We need your help now more than ever. Anyone interested is more than welcome to contact me as there are several openings available.

Respectfully submitted,

Keith Kridenoff

AUDITOR'S COMMENTS

C&O Canal Association
Annual Meeting

This is the seventh consecutive year that John Chandler and I have been the auditors for the Association. It has always been an agreeable task because we have had three highly competent treasurers over these years, Dave Johnson, Bill Evans, and Bill Speck. Furthermore, we have a sound accounting system that was introduced in 1989 by Dave Johnson.

What we do first is scrutinize the bank records to be sure that money on deposit agrees with receipts and asset funds shown in the Treasurer's annual report. We also examine payment vouchers and other records to ascertain that all expenditures are described in suitable detail. Then we look at the financial and record-keeping system itself to assess the security of our funds and suitability to our needs for financial information.

In brief, we have made five findings;

- 1) The Treasurer's report for 1995 reflects accurately the Association's transactions during the year and the financial condition at year's end.
- 2) The records contain ample detail and documentation in support of each transaction.
- 3) All payments have been made according to Board policy or direct Board action.
- 4) The Association's operating funds are held in a federally insured bank account. Special funds, such as the Davies Fund, are held in conservative and sound savings institutions.
- 5) The record-keeping system continues to meet the needs of the Board and membership for up-to-date information that is keyed to the Association's budget.

Copies of the audit report are available for those who would like to examine it.

John and I want to commend Dave Johnson for setting up and maintaining a first-class set of records. Dave is carrying out an important and time-consuming task for the Association and he is doing it extremely well. We are most grateful.

John Chandler and Ken Rollins, CPA, Auditors

ACKNOWLEDGEMENT OF CONTRIBUTIONS

In order to maximize the impact of your contributions, the Association will no longer send individual acknowledgement. (For tax purposes, contributions in excess of \$250 will be acknowledged by the treasurer.)

With appreciation, the C&O Canal Association acknowledges the following persons who have contributed to the Davies Fund

(D), C&O Canal Fund (C), or the Monocacy Aqueduct Fund (M) since the last report in *ATP*:

Katrinka L. Westendorf	M
CANAL SOCIETY OF NEW JERSEY	M
Marguerite O. & Paul R. Davis Jr.	M
Walter G. Gilbert	M
John H., Jr. & Gloria B. Lindt	CM
Mrs. Win Proudman	D
Jack & Frances Stickles	M
Mario & Anne Abbate	CM
James R. Alden	M
John F. Barr	DCM
Terry R. Betzer	M
Robert Bradtke	M
Elizabeth L. Bushell	M
John & Renee Butler	M
Thomas John Crockett, 3rd	M
Stephen J. DeLanoy III	C
Emma R. Dieter	CM
Alverta R. Dillon	DCM
Edward J. & Jean E. Dwyer	CM
Robert L. Ebert	DCM
John Fragale	DCM
Mr. & Mrs. Ronald H. Fisher	M
Karen M. Gray	CM
William S. Hall	M
Thad Hecht	M
Alan & Becky Hedin	M
Glenn & Mildred Heimer	CM
June L. Henson	DCM
Francis M. Hugo	DCM
Ronald E. Howard	M
Dorothy J. Ipavec	M
David M. Johnson	C
Dorothy D. Johnson	M
Donald R. & Carol Juran	M
Joseph Kochenderfer	M
Harold A. & Jane T. Larsen	DCM
Nanci S. & Allan Link	C
Herbert J. Lewis	M
Herbert C. Madison	M
Judith & Marvin Mag	M
Michael & Linda Marmer	CM
Robert W. Martin	C
Paul H. Meijer	M
Jack P. Meiners	M
Walter L. Meseck	CM
Carrol E. Morgan	DCM
John P. Murray	DCM
Bejay Myers	DCM
Marcus W. Page	M
Mark D. Pankin	CM
Richard P. Poremski	M
Craig A. Reynolds	CM
Robert J. Reynolds	M
Barbara Robinson	C
Howard & Helen Rosen	D

Dennis E. & Debra G. Roumm
A. Dan Schnyer
Michael A. & Molly Schuchat
Edward B. Selby Jr.
Herbert E. & May Shepard
Sidney & Laurie Skjei
Robert & Marianne Smythe
Arthur B. Spitzer
Arthur W. Stier
Steven A. Teitelbaum
John & Elaine Viner
William Whalen
Edith C. Wilkerson
Anne P. Wright
Craig Zane & Ginette Garretson
John A. Ziegler
Robert G. & Elizabeth R. Alcorn
Eugene & June Bergman
Blair T. & Nancy Ann Bower
Sharon Cochran
Maurice & Gerry Compber
Franklin J. & Cathleen Cook
Eduardo M. Cunningham
Morris F. Damuth
Daniel H. Davis
Paul R. & Marguerite O. Davis Jr.
Frederick S. Demarr
Mark Docterman
James J. Doherty
Ruth Stone Eckel
Cornelia J. Ernst
William J. Evans
Patricia Ann Fankhouser
John C. Frye
Frances A. Gallegos
Justin R. Golden
John A. & Brita Harris
Judith A. Hecht
John S. & Shizue Howe Jr.
Robert K. & Doris Kahn
Abner Kaplan
Kenneth A. Lavish & Janice Devine
R. Theodore Leach
John J. & Judy Looney
John C. Marziani
Mary K. McEwan
Robert E. & Donna L. Mecklenburg
Forrest L. & Lorraine Minor
Frederick I. & Judith H. Mopsik
Diana M. Niskern
Roger J. & Patricia Plaskett
Judith A. Ratcliff
Albert E. Ridge
Kenneth S. Rollins
Lois Schiffer
Donald & Helen Shaw

M
CM
C
M
M
DCM
M
M
DM
CM
M
M
M
CM
M
D
M
DCM
D
M
DC
M
DCM
M
M
D
M
DCM
M
M
M
DCM
M
M
DCM
M
M
CM
M
M
CM
M
M
DM
DCM
M
M
M
CM
M
C
DCM
M
CM
C
M

Leonard E. Skogland & family	CM
Sherwood Smith	D
Howard W. Solomon	C
Mr. & Mrs. Russell Stearns	M
Philip J. Stone	M
Paula M. Strain	M
W. L. & B.M. Stubblefield	C
Paul W. Tourigny	DC
Samuel A. & Grace Tucker	DC
Robert & Dorothy Walter	M
Ralph Watkins	M
Joan C. Burke	DC
R. Justin & Lynne DeForge	DC
William Devonmille	M
William L. Tammaro	M
Eugene & Inga Weinbach	M
John & Jeannine Brewer	M
John Fondersmith	DM
William & Chris Holdsworth	M
Ellen N. Holway	M
Kenneth & Dee Lapeyre	M
Jane Mandelbaum	M
Sam & Judy Marsh	M
Peter A. Morris	M
James R. Preston	M
Milton J. & Frances Stickles	D
Richard D. & Anita Stoll	C
Janney & Jean Wilson	C
Walter L. Wilt	M
Richard & Dolores Bender	C
John & Marian Brier	CM
Mario L. & Jean B. Cioci	C
John R. & Diana M. DelVecchio	M
Edythe S. Perry	M
Thomas L. & Linda E. Perry	M
Robert C & Jane D. Perry	M
Gary M. Nancy H. Petrichick	M
Sally Bryant	C
Ralph & Adele Donnelly	DM
John F. Hostie	DC
Katherine Ollry	M
Hilda H. Carpenter	C
William Craig Howell	C
Harry M. Kemstedt	M
J. Michael Lewis	M
William S. & Geraldine L. Price III	C
Robert & Delores C. Schoen	M
Louise A. Taylor	M
Bettie W. Thompson	C
John H. & Valerie W. Wheeler	C
Richard M. Banister	M
Terry R. Betzer	C
Norman P. Brand	C
David I. Brown Jr.	C
Michael J. Bucci	C
Christopher Connell	CM
Ronald B. & Barbara Connelly	C
Robert L. Cupp	M

CONTRIBUTIONS - continued

Geraldine Davies	DCM
Murray & Natalie Felsher	C
Mr. & Mrs. Robert J. Fisher	CM
Mary Gravalos	M
Ernest J. Green	M
Dorothy P. Harden	C
Michael C. Hickey	C
Mr. & Mrs. Henry Kumm Jr.	C
Carl A. Linden	M
Mr. & Mrs. Chesley H. Looney Jr.	C
Ian MacGregor & Susan Garbini	C
Gertrude I. Mahn	C
Susan P. & James Marsh	CM
Paul & Rita Marth	C
John C. Marziani	C
Dennis R. McCann	M
Richard Metcalf	C
Edward K. Miller	DCM
Naomi Pekmezian	C
Donald H. Plumb	CM
Mark Podvia	M
Minny Pohlmann	DCM
Mr. & Mrs. Neal Potter	C
Mary E. & Frank Presta	C
Peter H. Reuter	C
Grant & Jo Reynolds	M
James C. Rimmel	M
Joseph G. Robbins	M
Ellen K. Sarin	C
James G. Sartwell	C
Mary E. Sears	C
Sim R. Shanks	C
Sherwood Smith	C
William A. Schmidt	M
James B. Sparks Jr.	CM
Elizabeth P. Stone	CM
John A. & Ann M. Wisniewski	CM
Alan J. & Jeanne Walls	C
Jean Webb	DCM
James M. & Joan Wilson Jr.	C
James R. Alden	C
Nicholas J. Barnard	C
William & Rita Bauman	M
Donna & Robert Boies	C
Mr. & Mrs. Louis C. Boocheever	C
Joan C. Burke	C
William T. Carrigan	C
Anna K. Erdman	C
Davidson R. Gwatkin	C
Graham O. Harrison	C
Ronald E. Howard	C
Charles K. Johnson	C
Helen L. Johnston	C
Richard Lampl	C
David K. & Jo Ann H. Lawrence	C

Laila W. Linden	C
John Rider Peaslee	C
Richard P. Poremski	C
Mrs. W. M. Proudman	C
Edward B. Selby Jr.	C
Mr. & Mrs. Milton J. Stickles Jr.	C
Thaxter & Ruth Swan	CM
John & Eliane Viner	C
Martha L. H. & Joel R. Wales	C
Edith Wilkerson	C
Maureen Williams	C
Sybilla Sharps	C
Joyce M. Bloom	C
Thomas Bruce Hall	C
Joan Paull	M
Janice A. Plotczyk & Grenville B. Whitman	C
Arthur W. & Larue E. Stier	C
Mrs. Lee C. Struble	C
William E. Wentzel	C
John C. & Mary Elizabeth Woodward	C

TOWPATHS-TO-TRAILS INITIATIVE

In 1995, the Rails-to-Trails Conservancy (RTC) and the NPS Rivers, Trails and Conservation Assistance Program entered into a cooperative venture aimed at examining the trail and greenway potential of historic transportation canal corridors. A summary of their initial survey has been published. The following excerpts are from that report:

"The Canal Days of America were an exciting time in the nation's history. Nearly 5,000 miles of navigation canals constructed from the late 1700s to the mid-1800s. These engineering marvels opened the wilderness, tamed impassable rivers, and boosted trade in our young nation.

"Today, the scene is much different. Many of America's canals are forgotten. Locks once used to raise and lower boats and towpaths where mules walked pulling heavy barges are overgrown. Some are threatened by sprawling development. These canals are hidden treasures awaiting rediscovery as transportation and recreation resources.

"The goal of the first phase of the Towpaths-to-Trails Initiative was to determine what remains of these historic corridors and assess their recreational potential. In April, a questionnaire was developed to gather information about the current conditions of historic canal corridors, their ownership, trail development efforts, and obstacles encountered as a result of those efforts.

"The information gathered through this initiative is both revealing and exciting! The amount of activity already underway to enhance the recreational potential of canal corridors was surprisingly high. The information on the current ownership and conditions of the canals in this study is also especially interesting.

"Current ownership of these historic canal corridors varies greatly from state to state. For example, the Illinois & Michigan and Hennepin Canals, in the state of Illinois, are entirely in public ownership as state parks. By contrast, most of the canal corridors in Indiana have been broken up into privately owned pieces. A majority of the canal corridors are publicly owned.

"The question regarding existing condition of canal towpaths generated mixed, and sometimes conflicting, responses. Of 1,416 miles of canal corridor reported on, 233 miles were categorized as in good condition, 409 in fair condition, and 125 in poor condition. The remaining miles were listed as unsuitable for trail use. These figures do not include those canals with existing trails which are discussed below.

"One of the most surprising and important results of this survey is that 35 of the 46 canals have adaptively restored portions for trail use. Five of these canals - the Chesapeake & Ohio, Hennepin, Delaware Division, Delaware & Raritan, and Nashua have completed trail development along their entire length. The existing canal trails total 1,017 miles. All of the canals with trails allow hiking, and 30 provide opportunities for bicycling. The total number of users of these trails was reported at 8.1 million per year, ranging from four million users annually along the Chesapeake & Ohio Canal to 100 users along the Cumberland & Oxford Canal in Maine.

" 'Towpaths-to-Trails' conversions are underway on portions of 31 historic canals, although they face diverse obstacles. A lack of funding and stiff competition for existing dollars are the biggest obstacles to trail development.

"Management and maintenance needs also were high on the list of reported obstacles. Defining an entity that is willing to assume management responsibility is difficult. Other obstacles defined include liability, safety and security, adjacent landowner concerns and conflicts between trail user groups.

"Many of these issues will be addressed as the next step of the Towpaths-to-Trails Initiative, along with canal-specific issues. RTC and NFS plan to gather more information on how others have overcome these obstacles and developed successful towpath trails. This will lead to the production of a series of 'Towpath Trail Fact Sheets'."

The report contains a state-by-state listing of the canals included in the survey, with a short description of each canal and its current and potential trail use. The survey and report is the effort of Kristine Olka, Rails-to-Trails Conservancy, 1400 16th Street NW, Washington, DC 20036, and Rory Robinson, NPS Rivers, Trails, and Conservation Assistance Program, Ohio Field Office, 4717 Riverview Road, Peninsula, OH 44262. Kristine and Rory gave a presentation on the study at the International Canals Conference in Georgia in October.

VAIL AGENDA UPDATE - NATIONAL PARK SERVICE GOALS

In 1991, the National Park Service published the Vail Agenda, which looked at the current condition of the national park system and set out strategic objectives for the future. (Portions of that report were included in *Along the Towpath* during 1992.) The Park Service has released a new set of goals reflecting the direction the agency would like to take into the 21st century. In a recent letter, NPS Director Roger G. Kennedy wrote:

"The National Park Service has periodically set goals to guide its activities in carrying out its mission. In 1991, to celebrate our 75th anniversary year, the National Park Service undertook a self-evaluation, culminating in a symposium that identified changes needed to improve our service to the American people. Those recommendations were published as *National Parks for the 21st Century: The Vail Agenda*.

"Over the last four years, the National Park Service has refined the Vail Agenda somewhat, producing, in 1994, the *National Park Service Strategic Plan: Vision*, whose summary is attached. That summary sets forth seven goals for the National Park Service. Each of the goals is stated along with brief descriptions of its intent and successful completion."

Note: The two preceeding and the following article are contributed by Dave Johnson.

VOLKSMARCHERS PLAN CANAL WALKS TO BENEFIT MONOCACY AQUEDUCT

The Maryland Volkspport Association has announced plans for a series of walks that will cover the entire towpath of the C&O Canal during 1996, 1997 and 1998. The Volkspport organization has pledged that any profits resulting from the walks will be donated to the Monocacy Aqueduct Fund.

Each event will include a one-way "distance walk" - ten to twelve - miles going from south to north, and a 10K circuit walk. Between 150-200 walkers are expected to do each of the 10K circuit walks. Shuttle transportation will be provided for up to about fifty distance walkers for each segment. To facilitate planning, distance walkers will be encouraged to pre-register to be assured of a shuttle seat. The events planned for 1996 are:

SEGMENT 1 - 20 April 1996 MP 0.0 - 12.0 - Georgetown to Cropley for distance walkers; Fletcher's Boathouse to Georgetown and return for 10K walkers. Parking at Fletcher's for all; shuttle to Georgetown and pickup at Cropley for distance walkers.

SEGMENT 2 - 18 May 1996. MP 12.0 - 22.8 Cropley to Seneca for distance walkers; Great Falls to Cropley and return for 10K walkers. This walk is in conjunction with one scheduled Walter Reed Wandervogel. Parking at Great Falls

VOLKSMARCHERS - continued

for 10K and at Seneca for distance walk, with shuttle to Cropley.

SEGMENT 3 - 15 June 1996 MP 22.8 - 35.5 Seneca to Whites Ferry for distance walkers; Seneca to Horsepen and return for 10K; at Whites Ferry for distance, with shuttle to Seneca to start.

SEGMENT 4 20 July 1996 MP 35.5 - 44.6 Whites Ferry to Nolands for distance walkers; Whites Ferry to Marble Quarry and return for 10K. All park at Whites Ferry; return shuttle from Nolands.

SEGMENT 5 - 17 August 1996 MP 44.6 - 55 Nolands Ferry to Brunswick for distance; Brunswick south to Milepost 52 and return for 10K. All park at Brunswick; distance walkers shuttle to start.

SEGMENT 6 - 21 September 1996 MP 55.0 - 64.9 Brunswick to Dargan Bend for distance walkers; Brunswick to Weverton (junction of towpath with Appalachian Trail) and return for 10K. All park at Brunswick; return shuttle from Dargan for distance walkers.

SEGMENT 7 - 19 October 1996 MP 64.9 - 72.8 Dargan to Shepherdstown for distance walkers; Shepherdstown to Antietam Creek and return for 12K circuit walk. All parking at Shepherdstown College; distance walkers Shuttle to start.

Walks covering the canal from Shepherdstown to Cumberland will be scheduled for 1997. For additional information on these events or on Volksmarches in general, please contact Diane Ference, (401) 992-9303, or Stan Forster, (301) 469-4962 (Stan is president of the Sugarloafers Volkmarch Club, one of about 15 clubs that make up the Maryland association, and is a member of the C & O Canal Association.)

SECRETARY BABBITT TO HIKE TOWPATH

Interior Secretary Bruce Babbitt plans to hike a 60-mile portion of the C&O Canal towpath in April and will arrive in Georgetown by noon, Saturday, April 20. Association members are encouraged to greet Secretary Babbitt upon his arrival at noon in Georgetown Park between K Street and the Potomac, where he will give his Earth Day address.

In addition, the National Parks and Conservation Association (NPCA) will have a **March for Parks** walking event to raise money for the Canal Restoration Fund. The April 20 march will begin in Georgetown. Marchers will hike to Fletcher's Landing via the Capital Crescent Trail and return to Georgetown via the towpath. Those wishing more information or who wish to register for the walk should call Carrie Ridder at NPCA at 202-223-6722, extension 225.

- - Roger Stephenson, DOI

Editor's note: Members wishing more information on Secretary Babbitt's hike should contact the Association at 301-983-0825.

42ND ANNUAL WILLIAM O. DOUGLAS HIKE SET FOR APRIL 27, 1996

The Annual Justice William O. Douglas Hike will begin at 10:00 a.m., April 27, 1996, at Whites Ferry. After such a brutally cold winter, the hike will be a great opportunity to come out of hibernation. A registration form is included in this issue of *Along the Towpath*. This year's hike is twelve miles round trip. However, for those preferring a shorter hike, a shuttle from the Monocacy Aqueduct (the end point west) back to White's Ferry will be available. Bring a bag lunch and plan to eat at the Monocacy.

Following the hike, dinner will be served at St. Francis Episcopal Church, 10033 River Road, Potomac, MD. Happy hour will begin at 4:30 p.m. Dinner will begin at 6:00 p.m.

From Whites Ferry, the church is located on the left side of River Road, just past the intersection with Falls Road, the main intersection in Potomac Village.

NOTE: Reservations are required for the evening meal at St. Francis. Seating is limited to the first 150 registrants. If you are hiking and desire shuttle service back to white's ferry from the monocacy aqueduct, please check the *shuttle required* block on the reservation form. Reservations are **not** required to hike.

- - Sonny DeForge

LEARN ABOUT THE CANAL FROM JOHN FRYE

The Association will sponsor 2 more educational walks during this year. The walks will be led by John Frye, a member of the Association's board of directors and well known as a leading authority on the history of the C&O Canal and the Civil War. He has built a wide reputation as a premiere interpretive ranger in the National Park Service during the last fifteen years, and his programs have always drawn appreciative audiences.

The next walk will be in southern Washington County, adjacent to the canal, to explore the remains of one of Western Maryland's early industries, the Antietam Iron Works:

Sunday, 21 April, 2:00 P.M. - Antietam Village and iron works. The walk will be at the site of the Iron works in Antietam Village near the mouth of Antietam Creek. This will be a one-mile circle tour, featuring the Antietam Aqueduct, the loading basin, the site of the furnace stacks, and the only visible remains of the industry that operated from 1763 through 1883, the dam, mill race, and wheel pits.

Meet at the east end of Antietam Creek Campground, along Canal Road off Harpers Ferry Road, three miles south of Sharpsburg.

Sunday, 19 May -2:00 p.m. - Paw Paw Tunnel (with Ralph Donnelly). Meet at the tunnel parking lot.

CORRECTIONS AND COMMENTS

The photograph of the Monocacy Aqueduct appearing on the front page of the December 1995 Monocacy Issue was contributed by the Audubon Naturalist Society.

Also in the December 1995 edition, page 17, Jeanie Allen is the Secretary/Treasurer of the Augusta Canal Authority.

The date of the Paw Paw Tunnel walk with Ralph Donnelly has been changed from May 12 (Mother's Day) to May 19.

The Editor regrets these and any other errors and welcomes the opportunity to make corrections.

The *Canal Characters* and *Rocks and Locks* series by Ken Rollins and Dave Gardner, respectively, will be featured in the June issue of Along the Towpath.

Space limitations pre-empt publishing the voluminous number of canal-related newspaper articles of the last three months in this issue.

- - RCP

1996 MEMBERSHIP RENEWALS ARE DUE--MEMBERS IN GOOD STANDING MAY DISREGARD THIS NOTICE

Annual memberships in the Association are concurrent with the calendar year and expire on December 31st. It is the Association's policy to enclose renewal forms with the winter and spring issues of the newsletter. This practice saves the expense of a separate mailing, plus many volunteer hours for filling and addressing envelopes.

The code in the upper right corner of your mailing label indicates your current membership status. The letter shows your membership class: "M" for individual member, "F" for family, and "P" for patron. The number indicates the year through which your membership is paid: "95" means your membership expired in 1995; "96" means that you are paid-up through 1996, etc.

→THEREFORE, IF THE NUMBER ON YOUR MAILING LABEL IS "96" OR HIGHER, YOU ARE A MEMBER IN GOOD STANDING AND MAY DISREGARD THE REMAINDER OF THIS NOTICE. WE ARE NOT ASKING YOU TO PAY YOUR DUES AGAIN.←

However, if the number on your label is "95", you are in arrears and will be dropped from the mailing list unless your 1996 dues are paid. Please use the attached renewal form to remit your dues today and remain a member of the C & O Canal Association.

(The labels for this newsletter were prepared on approximately March 7, 1996. If you mailed your dues at about that date or later, thank you and welcome back.)

You may also use the renewal form to make a contribution to one or more of the Association's special funds, and add your donation to your dues payment. The funds are as follows:

MONOCACY AQUEDUCT FUND. The Association has undertaken a major campaign to raise funds for the stabilization and preservation of the Monocacy Aqueduct, as described in the September and December issues of *ATP*.

C & O CANAL FUND. Donations to this fund are used to support projects in the park. All 1996 donations will be applied to restoration of flood damaged areas.

DAVIES FUND. This fund, named in honor of Bill Davies, was established to create a reserve to be available for legal actions that may be taken to protect the park from internal and external threats to its integrity and quality.

HAVE YOU RENEWED YOUR MEMBERSHIP FOR 1996?

The C & O Canal Association is a non-profit organization as defined by section 501 © (3) of the Internal Revenue Code and all contributions are tax deductible.

Along the Towpath is published in March, June, September, and December by the :

C & O Canal Association
P.O. Box 366
Glen Echo, MD 20812-0366

Articles for publication should be received by the 15th of the month prior to publication.

Please mail articles to:

Robert C. Perry
Editor, *Along the Towpath*
12713 Knightsbridge Drive
Woodbridge, Virginia 22192

Membership in the C & O Canal Association is open to all persons with an interest in the C & O Canal, the C & O Canal Historic Park, and the Potomac River Basin. Annual membership dues are \$15 individual, \$20 family, and \$25 patron, and are assessed on a calendar-year basis. Dues should be mailed to the C & O Canal Association at the above address. A newsletter subscription is included with membership. The Association is a non-profit organization as defined by section 501(c)(3) of the Internal Revenue Code and all contributions are tax deductible.

The C&O Canal Association maintains a telephone for information and inquiries. Please direct calls to (301) 983-0825.

C & O CANAL ASSOCIATION

1995-1996 Association Officers

President:

Gary M. Petrichick
716-268-5187

First Vice President:

Thomas L. Perry
301-223-7010

Second VP & Level Walker Chairperson:

Keith Kridenoff
410-661-8285

Secretary

Rachel L. Stewart
703-237-4727

Treasurer

David M. Johnson
301-530-7473

Information Officer

Kate Mulligan
202-484-3590

36 Willets Ave.
Belmont, NY 14813

116 S. Conococheague Street
Williamsport, MD 21795

1725 Red Oak Road
Baltimore, MD 21234

5914 Washington Street
Arlington, VA 22205

9211 Wadsworth Dr.
Bethesda, MD 20817

1301 Delaware Avenue, SW
Washington, D.C. 20024

Board of Directors: (Terms expire in 1999) Charles Ayers, Harold Larsen, Nancy Long, Robert C. Perry, Patricia White (Terms expire in 1998) William J. Evans, Karen M. Gray, Fred I. Mopsik, Ralph Donnelly, Peggy Weber. (Terms expire in 1997) William D. Bauman, John Frye, Norma Hendrickson, Ellen Holway, Lyman Stucker.

Editorial Staff

Editor: Robert C. Perry 703-590-5568

Associate Editors

Carl A. Linden
Ken Rollins
Jane D. Perry

DIRECTORY C & O CANAL NHP TELEPHONE NUMBERS AND PERSONNEL

C & O CANAL NHP HQTRS

Box 4, Sharpsburg, MD 21782
Superintendent

301-739-4200
Douglas Faris

Assistant Superintendent
Chief Ranger
Admin Officer
Asst Ch. Ranger & Chief, Visitor Protection Branch
Chief, Natural Resource Mgmt Branch
Chief, Cultural Resource Mgmt Branch
Chief, Interpretation Branch
Chief of Maintenance

Keith Whisenant
Ken Brodie
Kevin Fitzgerald
Patrick Toops
Susan Trail
Gordon Gay
Bob Hartman

PALISADES DISTRICT

11710 MacArthur Blvd, Potomac, MD 20854
301-413-0024

District Ranger
Supv Ranger - Fee Collection
Supv Ranger - District Interpretation

Tom Nash
Terry Barbot
Clyde Bell

GEORGETOWN VISITORS CENTER

1055 Thomas Jefferson Street, Washington, D.C.
Park Ranger - Subdistrict Interpretation

202-653-5844
Kathy Kupper

GREAT FALLS TAVERN VISITORS CENTER

Great Falls Tavern Information
Park Ranger - Subdistrict Interpretation

301-299-3613
Nancy Brown

The Palisades District begins at Milepost 0 (Tidelock) and continues to Milepost 42.19 (Monocacy River).

WESTERN MARYLAND DISTRICT

301-739-4200 x237

District Ranger

Mark Spier

Monocacy Subdistrict
Conococheague Subdistrict
Four Locks
Paw Paw

Bill Orlando
John Bailey
Bob Gray
Rick Erisman

Supv Ranger District Interpretation

Martin Gallery
301-678-5463

WILLIAMSPORT VISITORS CENTER

Williamsport Subdistrict Interpretation

Vacant

HANCOCK VISITORS CENTER

301-678-5463

326 East Main Street
Hancock, Maryland 21750

Park Ranger

Sherilyn Seyler

CUMBERLAND VISITORS CENTER

301-722-8226

Western Maryland Station
Cumberland, Maryland 21502

Park Ranger

Rita Knox

The Western Maryland District begins at Milepost 42.19 (Monocacy River) and ends at the Canal Terminus, Cumberland, Milepost 184.5.

OTHER USEFUL TELEPHONE NUMBERS:

Georgetown Boat Operation	202-653-5844
Abner Cloud House	202-472-2679
Fletcher's Boat House (Concessionaire)	202-244-0461
Canal Clipper, Great Falls Tavern	301-299-2026
Swains Lock (Concessionaire)	301-299-9006

CALENDAR OF UPCOMING EVENTS

<u>Date</u>	<u>Day</u>	<u>Event</u>
-------------	------------	--------------

Note: Readers are cautioned that some events may be cancelled or rescheduled as a result of the Flood of '96. It is recommended that you contact the point of contact(s) listed under the description of the event or the C&O Canal Association at 301-983-0825 for information/confirmation.

Monthly	Wed, Sat	<i>Sights and Sounds of the Seasons</i> nature walks are scheduled four times monthly on the first and last Wednesday and Saturday. Meet in Great Falls Tavern at 10 a.m. to begin with a brief slide show. Hikes are led by Park Service Volunteers Betty Bushell, Betty Henson, and Helen Johnston.
Apr 6	Sat	VIP WORKDAY, 9 a.m. to Noon. Meet at Great Falls Tavern (for transportation) or at Lock 8 parking lot for pruning on lock levels 8 to 11. Call John Lindt (301) 469-6381, or Ranger Nancy Brown (301) 299-3613.
Apr 14	Sun	Board Meeting, Glen Echo Town Hall, 1:00 p.m.
Apr 21	Sun	Antietam Village Tour led by John Frye, 2:00 p.m. See article in the December issue of <i>Along the Towpath</i> and page 17 of this issue.
Apr 27	Sat	42nd Anniversary Justice William O. Douglas Hike. Whites Ferry to Monocacy River Aqueduct and return. See page 17.
May 4	Sat	VIP WORKDAY, 9 a.m. to 4 p.m. Meet at Great Falls Tavern to paint fence and stain lock-gates. Bring picnic lunch and wear clothing suitable for painting. Call John Lindt (301) 469-6381 or Ranger Nancy Brown (301) 299-3613 for details.
May 11	Sat	C&O Canal Bike ride. Details in March issue of <i>Along the Towpath</i> . Contact Mario Abbate (301) 540-6974.
May 18	Sat	C&O Canal Association Restoration Project - Sycamore Landing to Seneca. Call the Association telephone number (301) 983-0825 to request details.
May 19	Sun	Paw Paw Tunnel walk with Ralph Donnelly. Meet in the tunnel parking lot at 2:00 p.m.
Jun 1	Sat	VIP WORKDAY, 9 a.m. to noon. Meet at Riley's Lock (Seneca) to clear vegetation from lock and nearby structures. Bring lunch if you wish. Call John Lindt (301) 469-6381, or Ranger Nancy Brown (301) 299-3613 for details.
Jun 8	Sat	Canal Commission Meeting.
Jun 15	Sat	Canoe from Violettes Lock to Great Falls. Ideal introduction to canoeing -great for old-timers, too. Contact Carl Linden (301) 229-2398 or Ken Rollins (804) 448-2934.
Jun 27-30	Th-Sat	World Conference. Birmingham, UK.
Jun 30	Sun	Board Meeting, Williamsport Library, 1:00 p.m.
Jul 6	Sat	Canoe the River from Brunswick to Monocacy landing. Contact Carl Linden (301) 229-2398 or Ken Rollins (804) 448-2934.
Jul 14	Sun	Potluck dinner with Friends of the Tavern and the C&O Canal Association. Details later.
Aug 4	Sun	Board Meeting, Glen Echo Town Hall, 1:00 p.m.

Aug 24-25	Sat-Sun	Williamsport C&O Canal Days. Contact Tom Perry (301) 223-7010.
Sep 7	Sat	VIP Workday. Details later.
Sep 7	Sat	Canal Commission Meeting.
Sep 14-15	Sat-Sun	Annual overnight Paw Paw bends canoe trip. Contact Carl Linden (301) 229-2398 or Ken Rollins (804) 448-2934.
Sep 14-15	Sat-Sun	Hancock Apple Days. Contact John Popenoe (301) 678-6379.
Sep 23	Sat	C&O Canal Bike ride. Details in March issue of <i>Along the Towpath</i> . Contact Mario Abbate (301) 540-6974.
Sep 28-29	Sat-Sun	Cumberland Canal Boat Festival. Contact John Millar (301) 729-3136.
Sep 29	Sun	Board Meeting, Tom and Linda Perry's, 116 Conococheague St., Williamsport, 1:00 p.m.
Oct 5	Sat	VIP Workday. Details later.
Oct 12-17	Sat-Thr	Through-bike trip -- Cumberland to Georgetown led by Tom Perry. Details later.
Oct 26	Sat	Annual Heritage Hike. Details later.
Dec 1	Sun	Board Meeting, Glen Echo Town Hall, 1:00 P.M.
Dec 7	Sat	Annual FROSTBITE HIKE . Contact Ken Rollins (804) 448-2934.
Dec 15	Sun	Holiday Sing-Along at the Great Falls Tavern, 3:00 p.m. Bring a snack to share.
Dec 14	Sat	Canal Commission Meeting.

1997

Mar 1	Sat	C&O Canal Association Annual Meeting. Williamsport, MD.
-------	-----	--------------------------------------------------------------------



FAREWELL, BUT NOT GOODBYE--REPORT OF PAST PRESIDENT CARL LINDEN ANNUAL MEETING, March 2, 1996

Not a Secret Society, but a Society with a Secret

In an appearance before our Board of Directors last summer, Mike Ditkoff, a fine humorist who had just joined our Association, recounted how he had the good luck of discovering the Canal. He recalled, however, that it took him no little while before he detected the presence in its precincts of the C & O Canal Association. He said that when he found us he could not help suspecting that we were some kind of secret society. The moral of his story is that the Association needs to make itself and its activities better known.

Though Mike's point was well made, his path to the Association is well travelled. Many, if not most of our members have followed the same order of discovery. First, we found the Canal upon a day, felt the joy of our find, and, then, sooner or later, learned that we were not alone. Others, like us, had formed an association devoted to the Canal. In any case, Mike's initial notion of us needs only to be turned around: we are not a secret society, but a society with a secret--namely, the shared discovery of the mystery and magic of the Canal and River. It is a "secret" open to all who come to know the Canal and River at first hand.

We, of course, have our Moses in Justice Douglas who took our congregation to the Promised Land. It was he who gave voice to our secret and our refrain: "It is a refuge, a place of retreat, a long stretch of quiet and peace at the Capitol's back door--a wilderness area where man can be alone with his thoughts. A sanctuary where he can commune with God and Nature, a place not yet marred by the roar

FAREWELL, BUT NOT GOODBYE - continued

of wheels and the sound of horns."

In the past two years as your President and prior to the Flood of '96, our Association went about its normal course of activity, serving the Canal's needs. Let me note some highlights:

- We staged the 40th Anniversary Douglas Memorial Through-Hike from Cumberland to Washington in April 1994--the latest in our round of quinquennial reenactments of the original through-hike. Cathy Douglas Stone saw the hikers off recalling Douglas' vow: "I don't want a road, I want the Canal!" (Let's aim at seeing the Canal fully restored when we hold the next through-hike in '99!)
- We helped the Canal Park get a new mule for the canal boat in Georgetown. She was dubbed 'Lil' after Lillian Langdon who was reared on a canal boat out of Georgetown. Lillian's father, Captain Bud Crampton, had a favorite mule and her name was 'Lil' (of course). Lillian dedicated 'Lil' at a stirring ceremony at Harper's Ferry-- this was a 'first'!
- Our work for the Canal was recognized by the National Park Foundation as an "outstanding partnership organization." Bob Stanton, NPS Director for the Capitol Region, presented the award to us.
- The Association established two new funds in addition to the Davies Legal Fund. The C & O Canal Fund and The Monocacy Aqueduct Fund were established in the National Park Foundation. The Association is devoting all donations to the Canal Fund this year to Canal restoration. The Davies Fund now exceeds its initial ten thousand dollar goal and the Canal & Monocacy Funds are nearing the twenty thousand mark.
- The Canal Fund has been used not only for acquiring 'Lil' but to cover costs of a run of 20,000 copies of the Canal Park's Facilities Guide as well as a number of NPS flyers on various Canal features.
- The Association published its Food & Lodging Guide and it has sold like hotcakes. A new edition will be forthcoming.
- John Lindt and his Volunteers-In-The-Park (VIP) have worked steadily on the Canal. For example, interior painting of the Great Falls Tavern Museum was just completed.
- The Association Archives have been transferred through a deed-of-gift to the Special Collections of The George Washington University. A Finder's Guide to the Archives will make them available on Internet to scholars and the public world-wide. Professional archivists will put the archives into state-of-the-art condition with the assistance of the Association's Archives Committee. By agreement the Association will have full access to the Archives for exhibits and other organizational uses.
- The Association now has a telephone (301 983 0825) located at the Great Falls Tavern (making us less of a "secret society"). The phone's mail boxes provide information on membership, volunteers, contributions and Association activities. Callers can leave requests for further information. An Association page on the Internet is planned.
- The Association has maintained a full schedule of activities on the Canal and River--canoe trips, cycling on the Canal, the regular Douglas and Heritage Hikes, and through-hiker re-unions. The Level Walkers made their regular rounds reporting on their assigned levels.
- An Association fund drive for the Monocacy Aqueduct is in the works and will be integrated into the overall campaign for Canal restoration in the wake of the Flood of '96. The Canal Park's Citizen Advisory Commission called upon us to undertake this effort and the Historic Preservation Commission of the Maryland National Capital Parks and Planning Commission awarded the Association a \$1,000 grant to prepare a brochure and video on the Monocacy Aqueduct. On April 27, the Douglas hikers will stop for lunch and a ceremony at the Aqueduct. The American Society of Civil Engineers is joining with us in the effort to preserve the Aqueduct. A video, a brochure, and Aqueduct T-Shirts are being prepared for the drive.
- In sum, not to be overlooked are our annual summer picnics with The Friends of the Tavern at the Tavern which are a high point of festivity on the Canal.

The Flood and the Association

Now the Flood of '96, the near-equal of Agnes in '72 in the damage it produced, has put the Canal Park and ourselves as among its

FAREWELL, BUT NOT GOODBYE - continued

guardians and protectors under a sudden and sharp challenge. No monument wrought in stone, the Canal is more like a living thing which prospers or perishes, depending on whether it is nurtured or neglected. The flood presents us with both danger and opportunity. Let us look to our forebears who were not deterred or defeated by floods.

The **danger** is that despite the best efforts of a budget-strapped Park Service the Canal and many of its structures, aqueducts especially, are in dire need of attention and repair. The Monocacy is a prime example of a structure the Canal cannot lose. It is literally a master link which, once broken, cuts the Canal into two. This was the situation even before the flood came and the current restoration drive was begun.

The **opportunity** lies in the outpouring of popular support of the Canal Park in the wake of the flood. In great numbers, our citizens have discovered the Canal Park. This was not the case twenty-five years ago when the Park was established. Donations now pour in and a volunteer army, 10,000 strong and still growing, is ready for action. It is clear that our citizens love the Canal and mean to keep it!

We, indeed, have an important role to play in helping with the volunteer effort and in seeking support for key Canal projects. We need to cooperate wholeheartedly with the Park Service and all organizations, governmental and private, working to restore the Canal. At the same time, we have a special task: **We are the sole private and volunteer civic association devoted to the Canal as a whole.** We have to resist the almost natural tendency of those who live along the Canal to view it in sections--their section. Each community from Georgetown to Cumberland wants its section fixed--now! This is all to the good and would be fine if each of the sections of the Canal had a community to speak for it. However, this is not the case. Many sections are orphans and remote. The Canal Park staff and the Park's Citizens Advisory Commission, do their best to look at the whole Canal, but, more often than not, the squeaky wheel gets the grease. Thus, the Association must always remind the public that united the Canal stands, divided it falls. Our theme must ever be the **continuity** of the Canal as a single and indivisible **national historical park**.

- - Carl Linden

HELP NEEDED...SOS

There has been an overwhelming response from people who want to help restore the Canal as a result of the damage caused by the Flood of '96.

C&O Canal Association members are needed to assist the National Park Service in phoning volunteers to schedule work projects.

We will be setting up in the Great Falls Tavern on March 25, 1996, to make calls on a continuing basis every Monday through Thursday from 5 p.m. until 8 p.m. There may be an opportunity to extend our days and times for calling later on.

If you can help make return calls to the volunteers who have offered their help, please call:

Sonny DeForge
(301) 530-8830

to schedule times that are convenient for you.

THE C&O CANAL ASSOCIATION STORE

BOOKS

Towpath Guide to the C&O Canal (1994): Natural, historical, industrial, archaeological, and engineering features as seen (or heard) from the towpath of the 184.5-mile canal. Thomas F. Hahn. Soft cover, 228 pages, 123 illustrations, 27 maps, 12th edition. \$14.00

The Alexandria Canal: Its History & Preservation (1992): The Alexandria Canal helped to create and to shape regional growth patterns in and around Alexandria. Its contribution to the region's economic growth went beyond its immediate physical impact, not only economically but culturally. Thomas F. Hahn & Emory L. Kemp. Soft cover, 76 pages, 92 illustrations. \$15.00

Cement Mills Along the Potomac River (1994): Relates the history of the natural cement industry in the Potomac Valley. Thomas F. Hahn & Emory L. Kemp. Soft cover, 90 pages, 86 illustrations. \$12.00

A Guide to Food & Lodging Along the C&O Canal (1994): C&O Canal Association, 1st edition. \$1.50-members; \$2.85-nonmembers

Chesapeake and Ohio Canal National Historical Park, NP Handbook 142 (1989): This picture book with descriptive text is divided into three parts: Part 1 is the historical setting, Part 2 describes the construction and operation of the canal; Part 3 is travel-guide information. Illustrations, maps, diagrams. \$5.00

OTHER ITEMS

Patch: C&O Canal Association. \$1.50

T-Shirts:

C&O Canal Association: Although the supply is diminishing, there are blue or green Association shirts in sizes medium and large. \$8.00

***The Monocacy Aqueduct: A new addition.** This shirt is a beefy-t, 100% cotton. Sizes: Small: 34-36; Medium: 38-40; Large: 42-44; Extra Large: 46-48. \$20.00. **All profits on this shirt will be donated to the Monocacy Aqueduct Fund.**

An order form is enclosed in this issue of *Along the Towpath*.

NEW T-SHIRTS ARE ON SALE.

The design on the back of the shirt, will show the outline of the C & O Canal towpath with various landmarks, i.e. canal towns, a canal lock house, the canal boat with mules, etc. As this is a fundraiser for the Monocacy Aqueduct, this lovely 7-arch aqueduct will be highlighted on the map. On the upper-left corner of the front of the shirt will be the logo of the Monocacy Aqueduct Committee—a drawing of the aqueduct—with the wording:

"C & O Canal Association" underneath. (This will be a quality t-shirt created by the designers of items for the Chesapeake Bay Foundation.)

As these t-shirts are still in the design stage, we do not know if the shirt itself will be heather gray or tan, it depends on colors in the design, but they will be ready for sale (\$20.00 each) at the Justice Douglas Hike on April 27, 1996.

Please note that all profits on this 100% cotton shirt will be donated to the Monocacy Aqueduct Fund.

If you wish to purchase a shirt by mail, please use the enclosed coupon. Otherwise, stop by the Association's table at the Monocacy Aqueduct on April 27th to purchase one. Shop early, as only a limited number of shirts will be available.