

THE D&H CANAL: AN UNDERAPPRECIATED AMERICAN TREASURE

CLIFF ROBINSON JR.



D&H CORRIDOR

Gravity Railroad in Waymart PA

1870s



Today



Roebling's Delaware Aqueduct

1870s



Today



DHTHC MEMBERS

Basha Kill Area Association
Carbondale Historical Society and Museum
Century House Historical Society
Town of Deerpark
D&H Canal Historical Society
The Delaware Company
Lackawaxen River Conservancy
Mamakating Historical Society
Mamakating Library
Mamakating Local Development Corporation LLC
Matamoras-Westfall Historical Society

National Park Service
Neversink Feeder & Canal Conservancy
Outdoor Club of Port Jervis
Shohola Railroad & Historical Society
Sullivan County Division of Public Works
Town of Mamakating
Upper Delaware Council
Wayne County Historical Society
Waymart Area Historical Society
Donald A. Drewett, Legislative Liaison





**CANAL IN CUDDEBACKVILLE NEAR
FEEDER SYSTEM**

A photograph of a forest stream. The stream flows through a dense forest with lush green foliage. A large, fallen log lies across the middle of the stream. The water is clear, and the surrounding trees are tall and green. The scene is captured from a slightly elevated position, looking down the stream.

CURRENT CONDITION



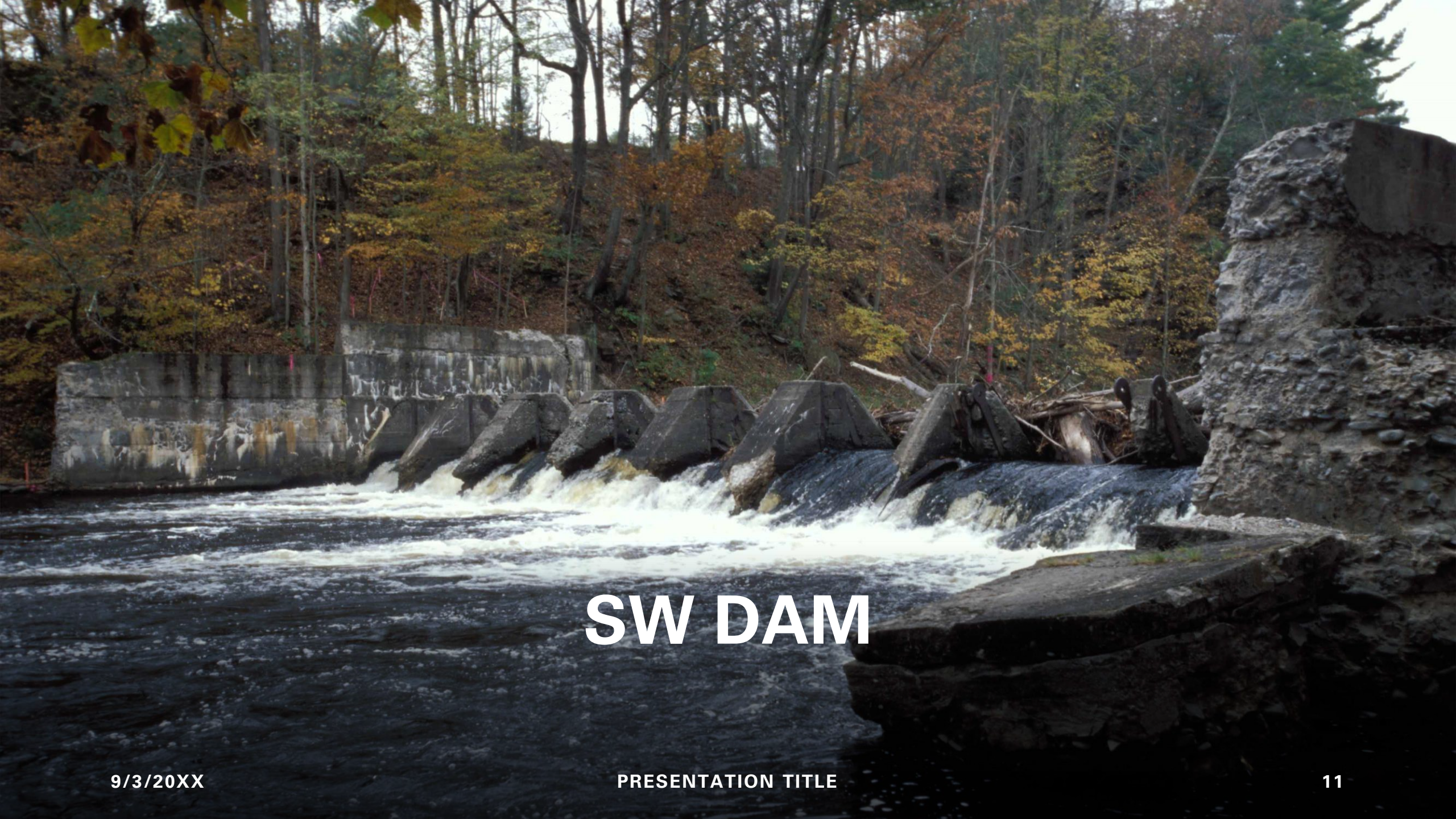
9/3/20XX

FEEDER CANAL



DWARF WEDGE MUSSEL

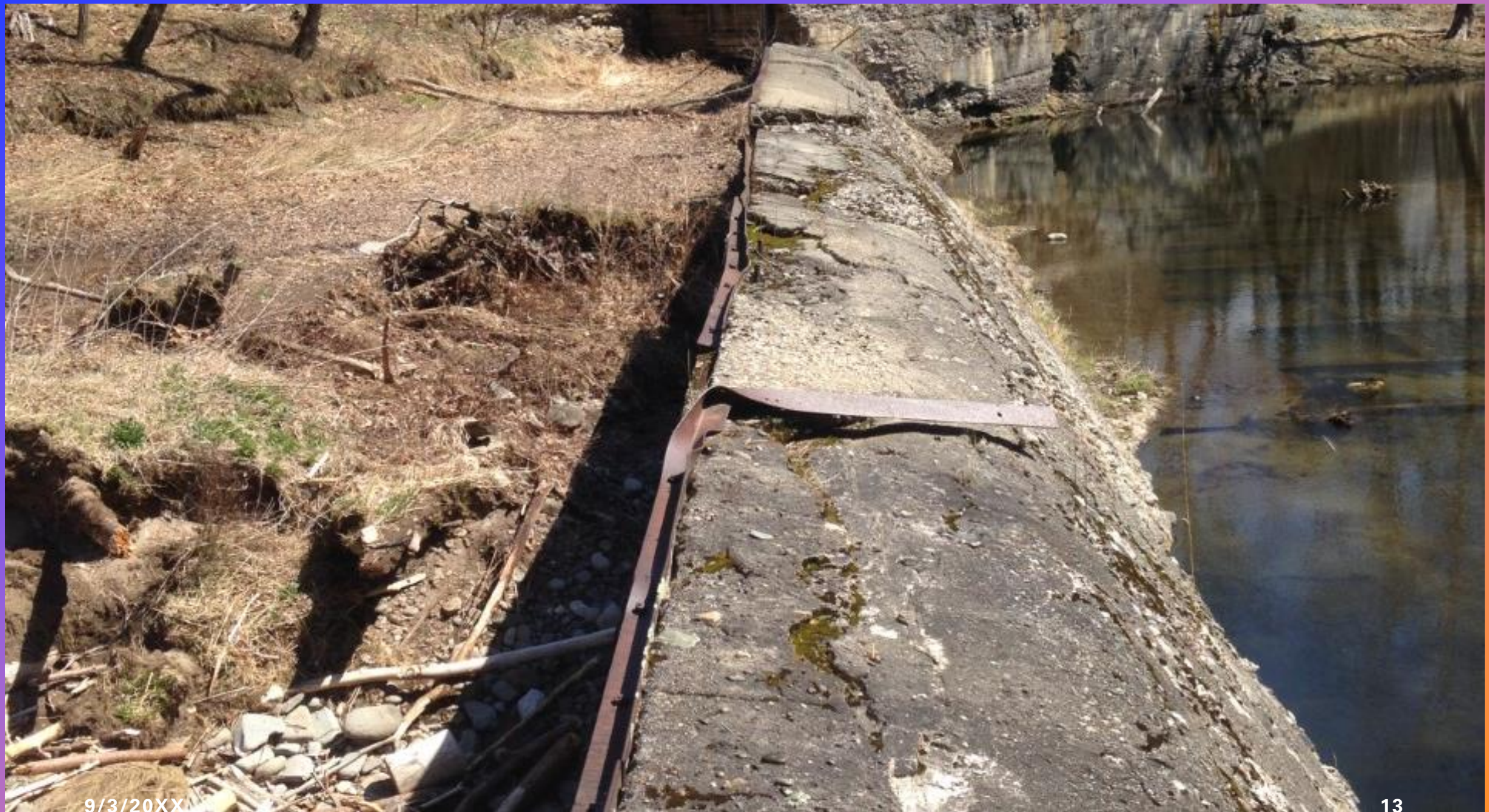
9/3/20XX



SW DAM



NE DAM



9/3/20XX



FEEDER GATE



INLET FROM NEVERSINK

9/3/20XX

\$20,000 REPORT

\$250,000

- Create three new trails
- Interpretive signage, benches
- No effort to repair any part of feeder system

\$2,300,000

- Some repairs to feeder system
- Some repairs to waste weir
- No repair to NE dam
- Water from diesel pumps

\$5,700,000

- Build new SW dam
- Repair NE dam
- Rebuild feeder gate
- Rebuild waste weir
- Repair feeder canal

NE DAM W/ GRAVITY WATER FLOW



HOLE UNDERMINING DAM



FUTURE OF THE D&H CANAL

1. Each group has at least one item on their agenda to improve communication and education about the canal.
2. Some groups are actively trying to acquire ownership of canal properties.
3. Some groups are actively seeking licenses to work with municipalities to improve the canal.
4. The DHTHC is in the process of getting the 5 NHL listings increased. We currently have over 150 nominations.
5. We recently added a government liaison to attempt to establish the corridor as a national trail.

D&H CANAL ALONG THE DELAWARE RIVER

