

**ERIE CANAL**

**HERITAGE PARK**

**AT PORT BYRON**



We're not out of  
the woods yet.

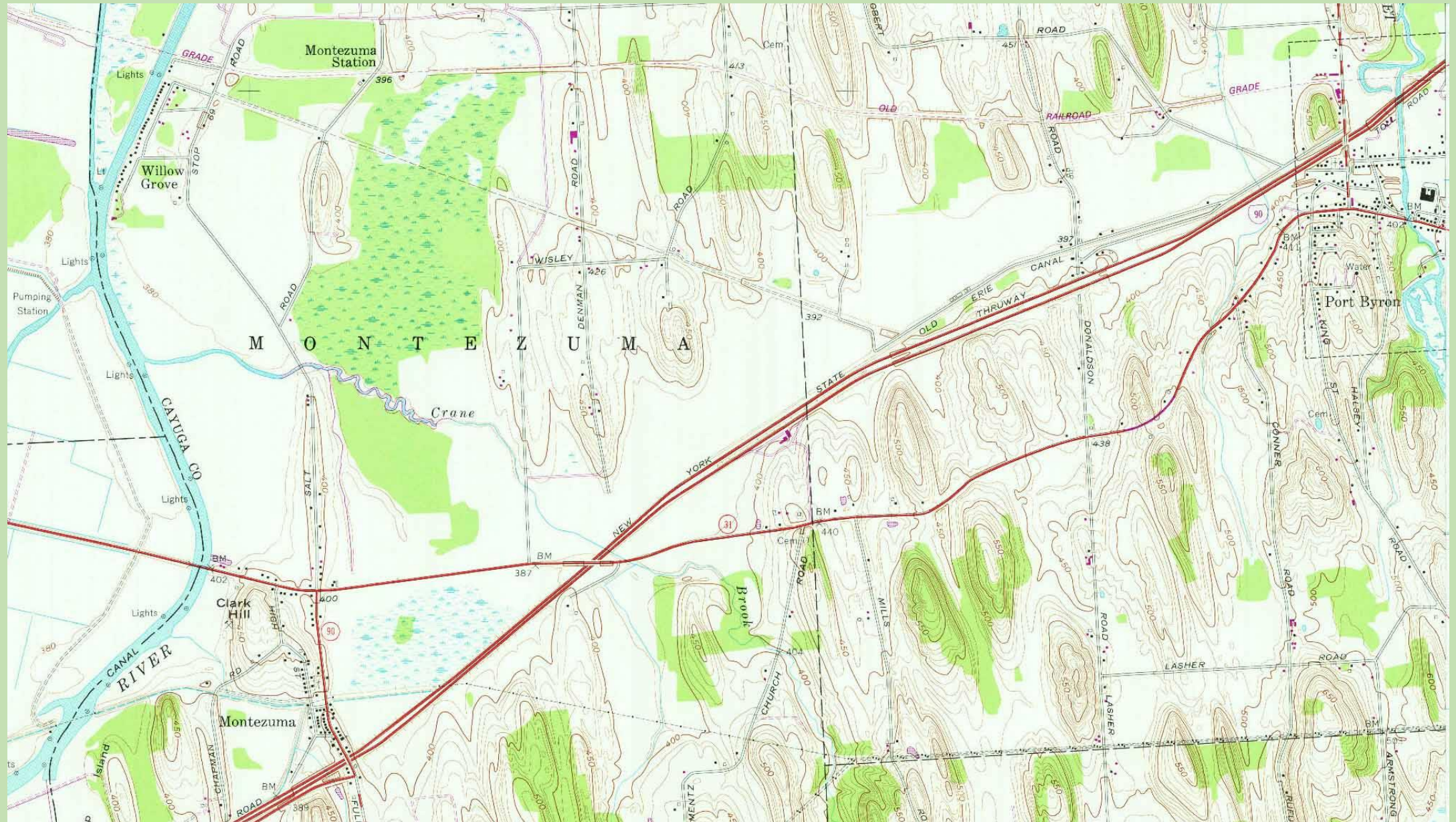


Enlarged Erie Canal Lock 52 at Port  
Byron, NY (c1905)





The story actually  
begins 13,287 years  
ago when the  
glaciers receded.







Park opens in  
October 2016.

Five-year contract  
with NYSTA (2017-  
2022)





















Operating Season  
May 1 to October 31  
(By contract)



# “Pin Map” of Visitation in 2019







Erie Canal Heritage Park at Port Byron

2020 Erie Canalway  
Heritage Award of Excellence

Erie Canalway  
National Heritage Corridor





The Society does much more!

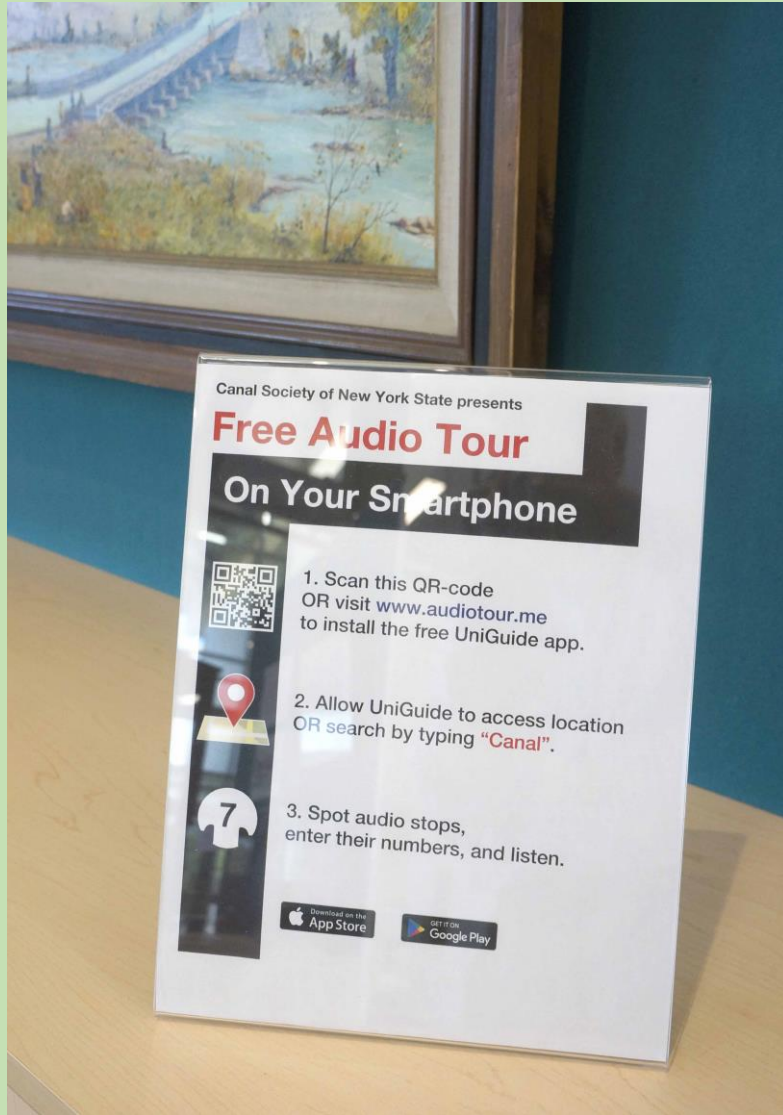






Just before the pandemic closure, long-planned new exhibits were installed.





Existing tools proved especially useful during the pandemic.



March 17, 2020

CSNYS to Thruway – “... inquiring whether the Thruway might allow a postponement in light of the obvious circumstances”

March 19, 2020

Thruway to CSNYS – “Is there a specific concern meeting May 1 opening if the climate we are in becomes “normal” let’s say mid-April?”





**Thruway  
Authority**

In accordance with Executive Order No. 202.17, all individuals **must wear a mask** in public where social distancing is not possible.



For more information, go to:  
**[coronavirus.health.ny.gov](https://coronavirus.health.ny.gov)**





## NY FORWARD SAFETY PLAN TEMPLATE

Each business or entity, including those that have been designated as essential under Empire State Development's Essential Business Guidance, must develop a written Safety Plan outlining how its workplace will prevent the spread of COVID-19. A business may fill out this template to fulfill the requirement, or may develop its own Safety Plan. **This plan does not need to be submitted to a state agency for approval** but must be retained on the premises of the business and must be made available to the New York State Department of Health (DOH) or local health or safety authorities in the event of an inspection.

Business owners should refer to the State's industry-specific guidance for more information on how to safely operate. For a list of regions and sectors that are authorized to re-open, as well as detailed guidance for each sector, please visit: [forward.ny.gov](https://forward.ny.gov). If your industry is not included in the posted guidance but your business has been operating as essential, please refer to ESD's [Essential Business Guidance](#) and adhere to the guidelines within this Safety Plan. Please continue to regularly check the New York Forward site for guidance that is applicable to your business or certain parts of your business functions, and consult the state and federal resources listed below.

### COVID-19 Reopening Safety Plan

**Name of Business:**

Old Erie Canal Heritage Park at Port Byron

**Industry:**

Historic Site & Museum

**Address:**



\*Park opens on August 1 on reduced hours (11 AM to 3 PM)

\*Thruway demands emergency reduction of contract subsidy due to toll revenue losses

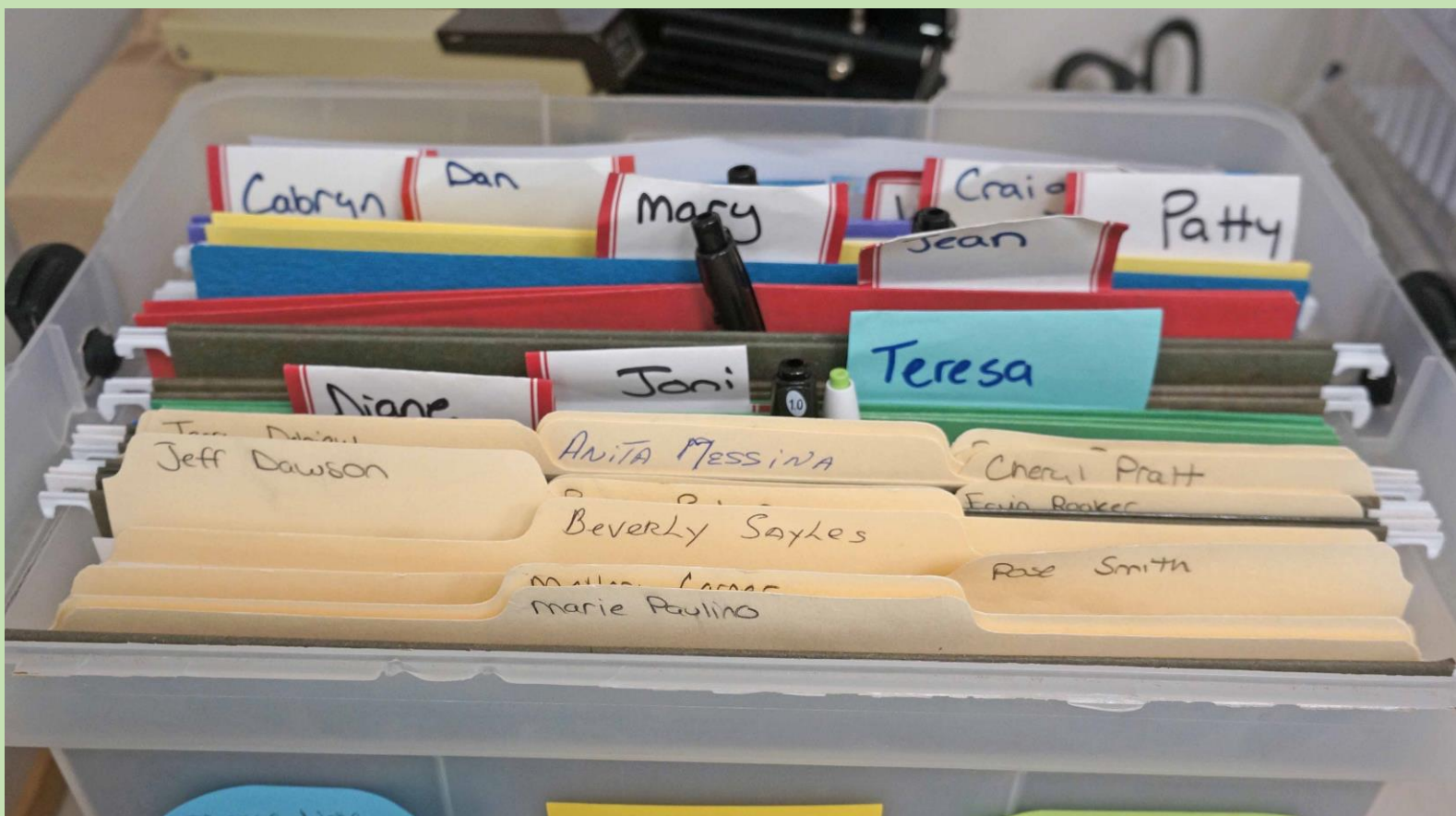
\*Staff reduced to minimize contact





- \*Erie House complex is closed.
- \*Plexi barriers installed
- \*All travel brochures and sales items put behind counters to minimize touchable surfaces
- \*Directional signage installed





\*Daily  
health  
checks



Sanitizing procedures for all touchable surface every two hours.























## #TravelConfidently when visiting Cayuga County

New health and safety practices have been added  
to every step of your travel journey.

#TravelConfidently









Financial  
Impact (Yes, the  
till looks empty  
for good  
reason!)





Canal Society  
Board of  
Directors at  
the Erie  
House,  
September  
19, 2020





September 2020 Fundraiser



# Pomeroy Fund for NYS History



MUSEUM ASSOCIATION  
OF NEW YORK

*Support for NYS history-related organizations*



	<b>Days Open</b>	<b>Visitors</b>	<b>Sales</b>
<b>2019</b>	185 (9 AM – 6 PM)	14,282	\$12,151
<b>2020</b>	92 (11 AM- 3 PM)	2,278	\$ 1,632



# 2021

- \*Resume normal season and hours
- \*Return of regular staff
- \*Partial reopening of the Erie House











August 22, 2021



# 2021

- \*Attendance at ~ 80% 2019 levels
- \*Sales at ~ 70% 2019 levels
- \*Mask wearing for staff resumes with Delta variant



