

Civilian Conservation Corps (CCC) and the C&O Canal

By: Joshua Trott

Chesapeake and Ohio Canal National Historical Park



Who am I?

- Intern through the American Conservation Experience Emerging Professionals in Conservation program (ACE EPIC)
- Second term, previously worked on a historic culvert survey
- Background in hydrology, geology, environmental science, and GIS



Purpose?

- To map and create a geodatabase of historic African American sites and the two CCC Camps along the C&O Canal
- Allow all data and information to be in a single place, geospatially referenced, and easily accessible
- Supports the State of Maryland's initiative to map historic African American sites

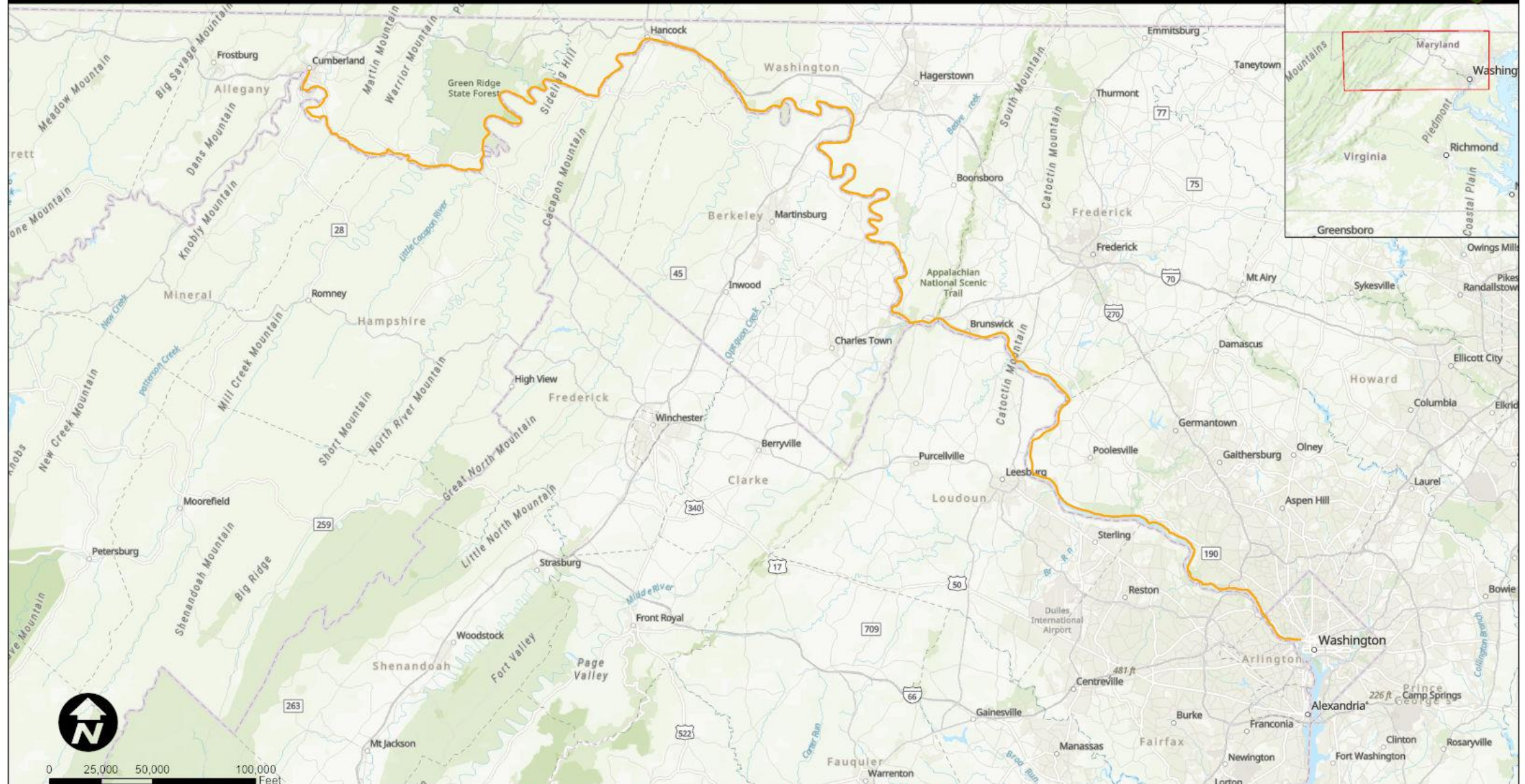
The Chesapeake and Ohio Canal

- Constructed from 1828-1850
- Commercial navigation ended in 1924
- Goes from Georgetown, Washington D.C. to Cumberland MD
- Follows the Potomac River
- 184.5 miles long, 74 locks, 7 dams to divert water
- U.S. government acquired the canal in 1938 and it was established as a National Historical Park in 1971

Chesapeake and Ohio Canal National Historical Park

Overview of Canal Location

National Park Service
U.S. Department of the Interior

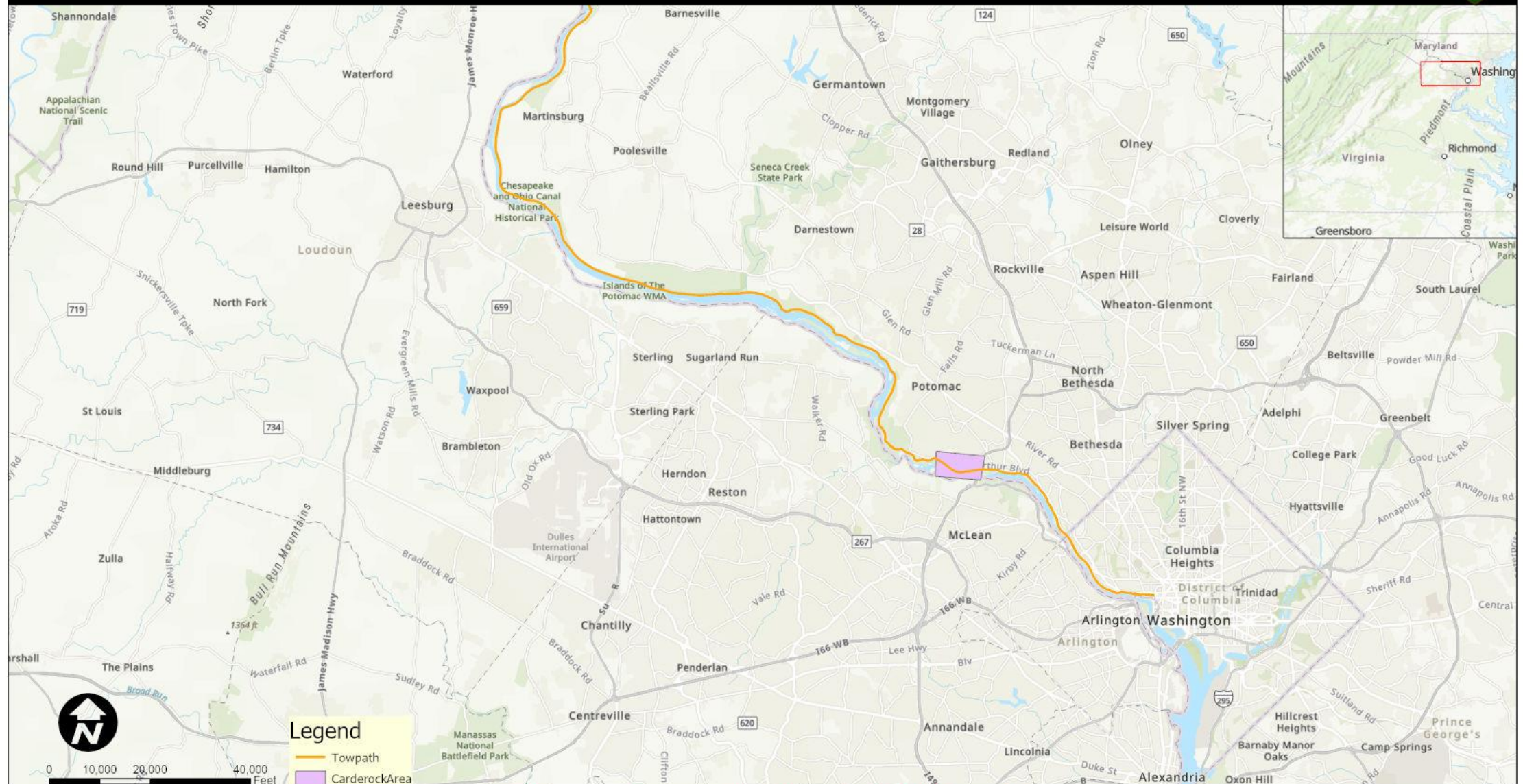


This map contains sensitive information, for NPS use only.

Chesapeake and Ohio Canal National Historical Park

Overview of Study Area

National Park Service
U.S. Department of the Interior



This map contains sensitive information, for NPS use only.

What was the CCC?

- Established under President Franklin D. Roosevelt
- Provide work for unemployed young men during the Great Depression
- Pay was \$30/month with the condition \$22-\$25 was sent to the enrollee's family
- Provided educational and recreational opportunities
- Focus on improving America's public lands for recreation

CCC Along the C&O Canal

- Two camps, NP-1-MD and NP-2-MD
- The camps were African American, segregated from other CCC camps in the region
- Restored section of canal from Georgetown to Seneca
- Camps were designed to minimally impact the environment
- The two camps were within a mile of each other in what is now the Carderock Recreation Area

"Our Only Alma Mater": The Civilian Conservation Corps and the C&O Canal

Special History Study

Josh Howard



CCC

Established by
FDR April 5,
1933

Camp NP-2
established
October 5, 1938



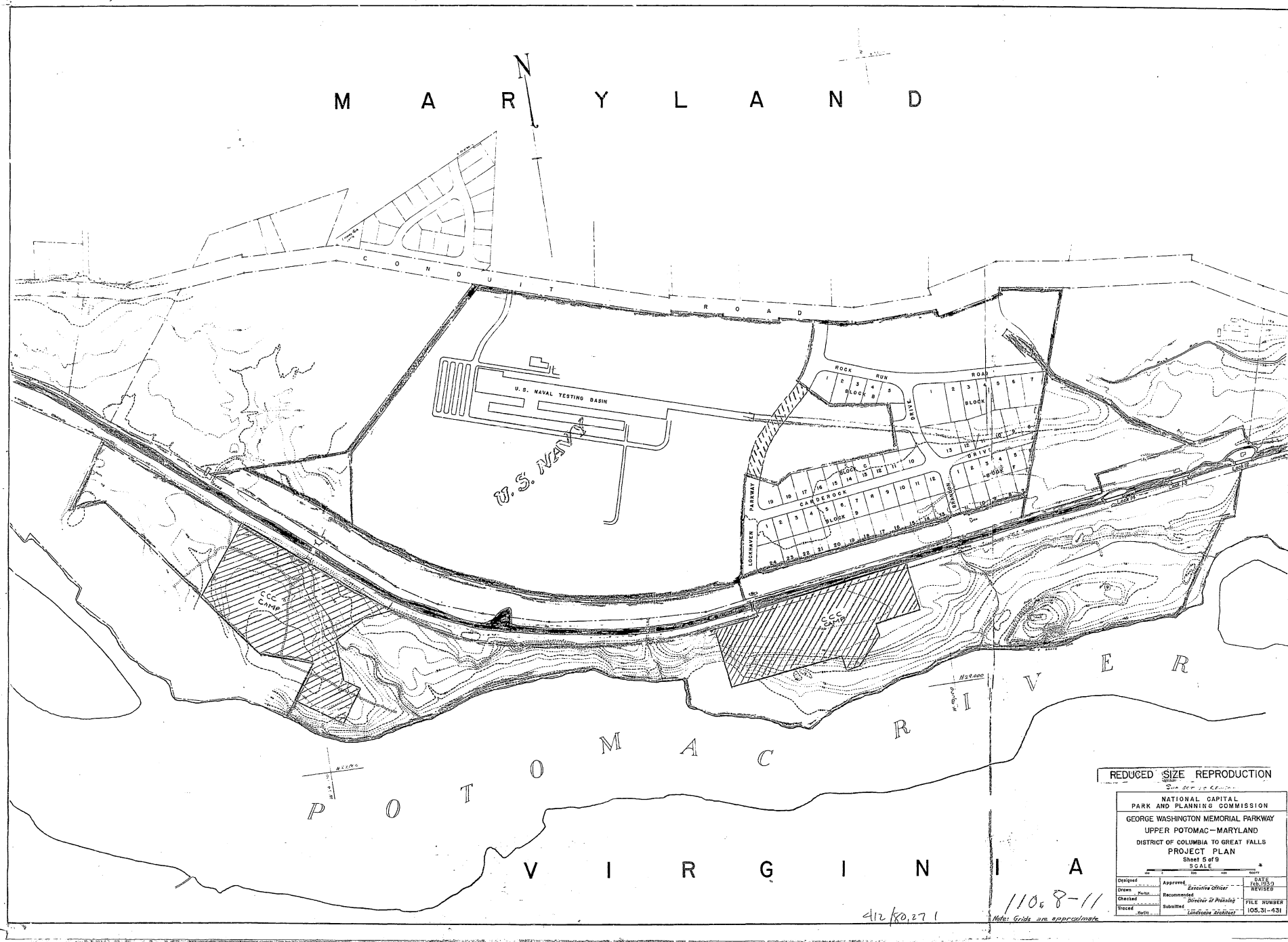
NP-2 closes October 15,
1941

Camp NP-1
established
September
18, 1938



April 1, 1941, government
mandated CCC reduction due to
WWII

April 1942, Camp NP-1 re-
designated as a full military
support camp.



REDUCED SIZE REPRODUCTION

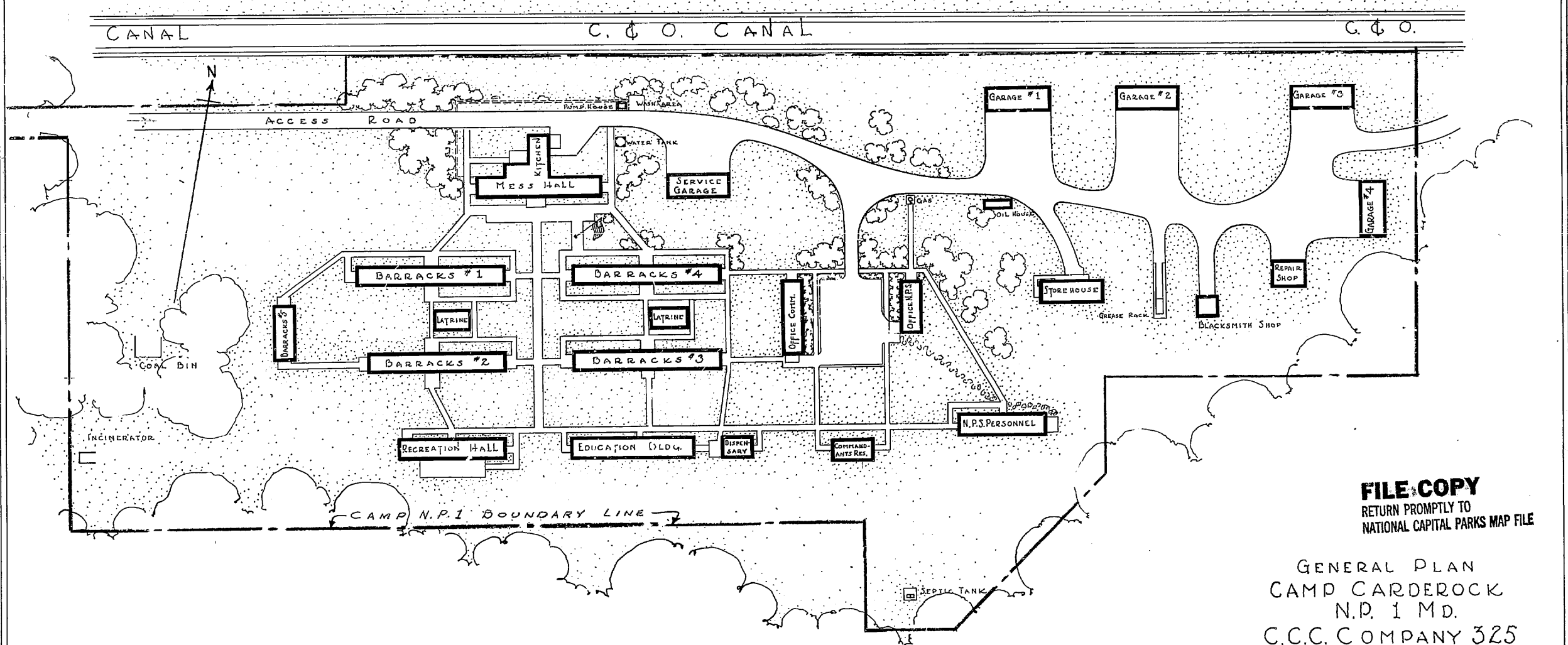
NATIONAL CAPITAL
PARK AND PLANNING COMMISSION
GEORGE WASHINGTON MEMORIAL PARKWAY
UPPER POTOMAC-MARYLAND
DISTRICT OF COLUMBIA TO GREAT FALLS
PROJECT PLAN
Sheet 5 of 9

SCALE		DATE
DESIGNED	APPROVED	FEB. 1950
DRAWN	EXECUTIVE OFFICER	REVISED
CHECKED	RECOMMENDED	
TRACED	SUBMITTED	FILE NUMBER
	LANDSCAPE ARCHITECT	105.31-431

412/80.271

110.8-11

Notes: Grids are approximate.

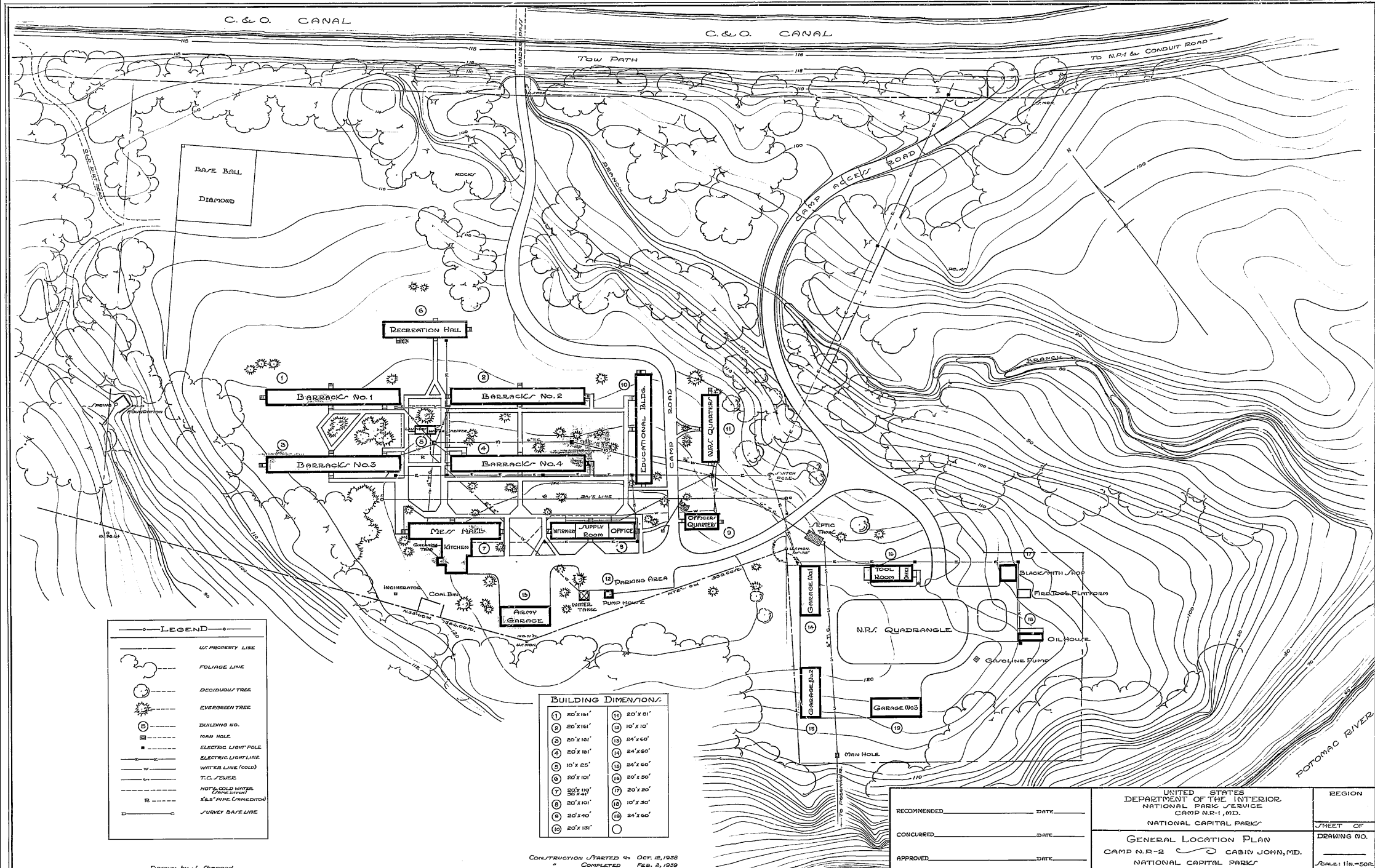


FILE COPY
RETURN PROMPTLY TO
NATIONAL CAPITAL PARKS MAP FILE

GENERAL PLAN
CAMP CARDEROCK
N.P. 1 MD.
C.C.C. COMPANY 325
CABIN JOHN MD.

NATIONAL CAPITAL PARKS
SCALE 1"=50' JANUARY 5, 1940
LCL

REDUCED SIZE REPRODUCTION



LEGEND	
	U.S. PROPERTY LINE
	FOLIAGE LINE
	DECIDUOUS TREE
	EVERGREEN TREE
	BUILDING NO.
	MAN HOLE
	ELECTRIC LIGHT POLE
	ELECTRIC LIGHT LINE
	WATER LINE (COLD)
	T.C./SEWER
	HOT/COLD WATER (UNHEATED)
	E&S PIPE (UNHEATED)
	JURVEY B&E LINE

BUILDING DIMENSIONS	
1	80' x 161'
2	20' x 161'
3	20' x 161'
4	20' x 161'
5	10' x 25'
6	20' x 101'
7	20' x 101'
8	20' x 101'
9	20' x 140'
10	20' x 131'
11	20' x 81'
12	10' x 10'
13	24' x 60'
14	24' x 60'
15	24' x 60'
16	20' x 20'
17	20' x 20'
18	10' x 30'
19	24' x 60'
20	0

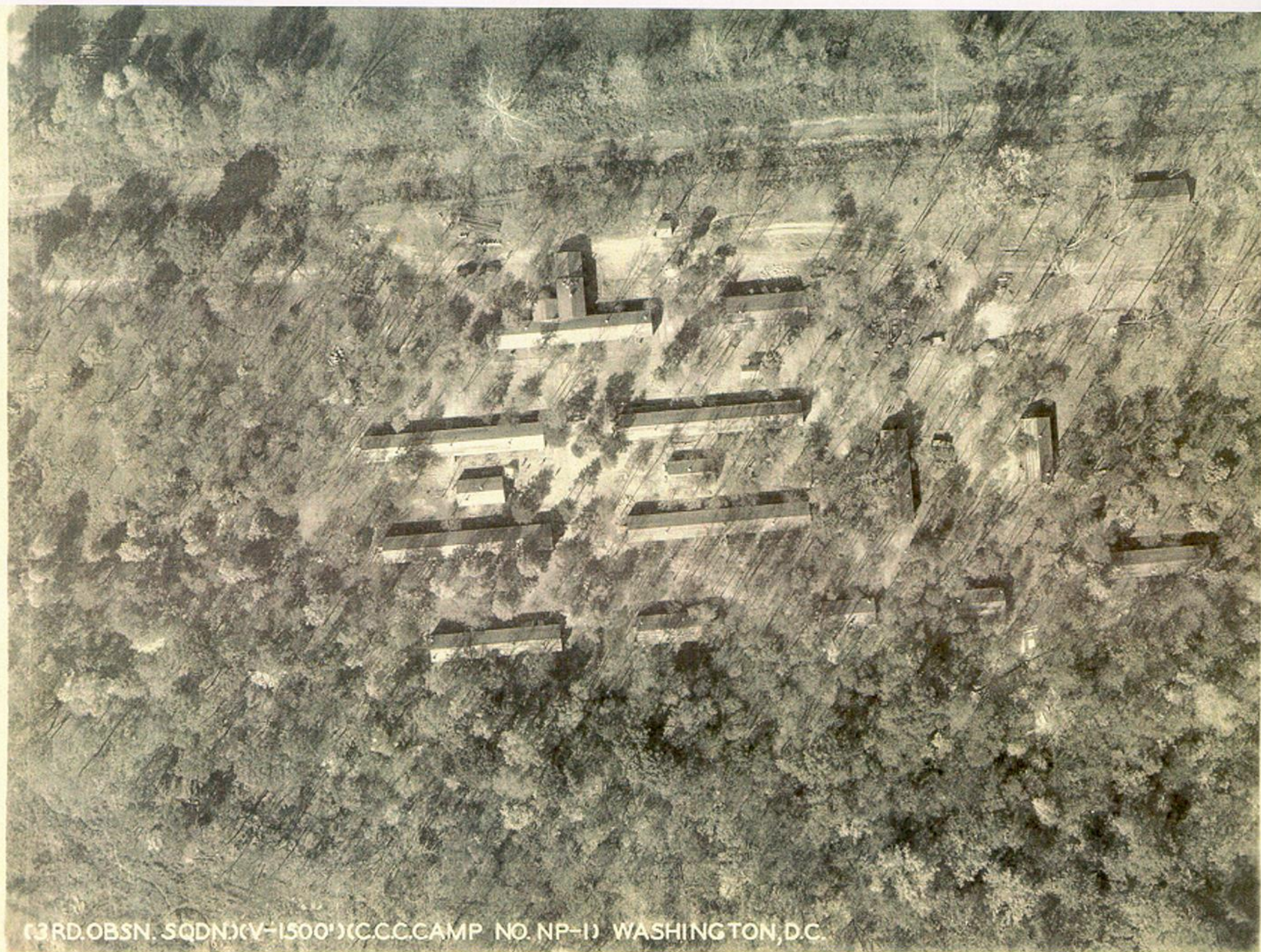
RECOMMENDED	DATE
CONCURRED	DATE
APPROVED	DATE

UNITED STATES
DEPARTMENT OF THE INTERIOR
NATIONAL PARK SERVICE
CAMP N.R.-1, MD.
NATIONAL CAPITAL PARKS
GENERAL LOCATION PLAN
CAMP N.R.-2 CABIN JOHN, MD.
NATIONAL CAPITAL PARKS

REGION	SHEET OF
	DRAWING NO.
	SCALE: 1 in. = 50 ft.

Drawn by J. Shepard

CONSTRUCTION STARTED ON OCT. 12, 1958
COMPLETED FEB. 2, 1959



(3RD.OBSN. SQDN)(V-1500')(C.C.C.CAMP NO. NP-1) WASHINGTON,D.C.

Geographic Information System (GIS)

- Computer mapping software
- Creates, manages, and analyzes spatial data
- Variety of applications
- Easily present spatial information
- Map a wide variety of data including topographic, demographic, geographic, and cultural data

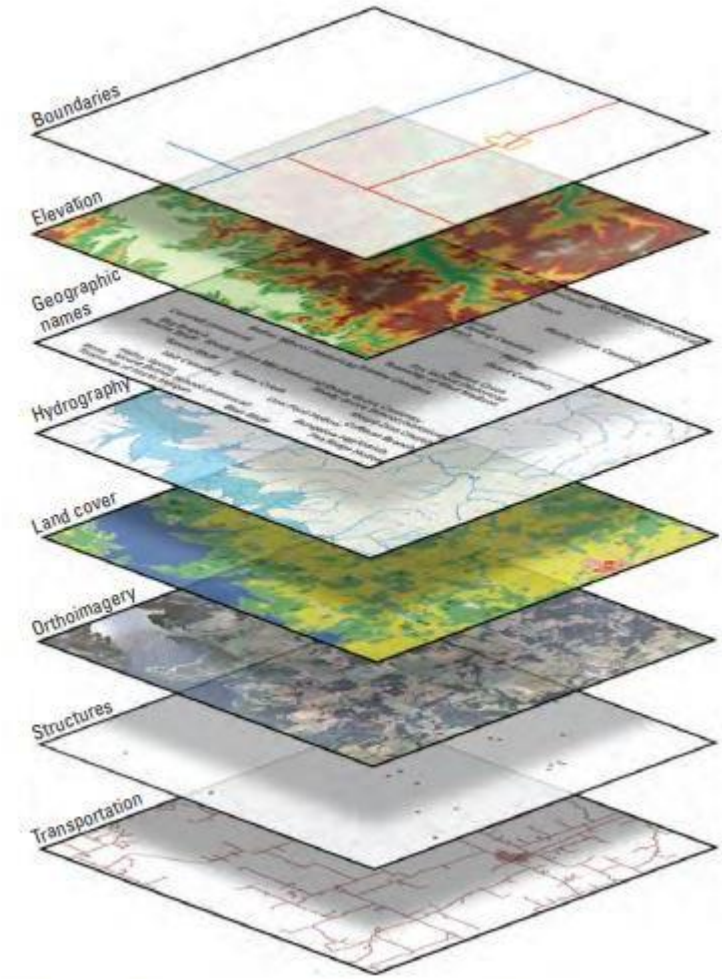


Figure courtesy USGS

Arc GIS Pro

- Upload general plan maps into GIS
- Georeference general plan for Carderock
- Georeference each camp using the general plan specific for each camp and using the canal as a guide
- Georeference aerials of NP-1-MD, none available for NP-2-MD from directly above

Arc GIS Pro (cont.)

- Create polygons of approximate locations of camp buildings
- Fill in attribute tables according to NPS Cultural Resources Standards for each building polygon
- Polygons also constructed along sections of the canal that the CCC maintained
- Upload project reports to section polygons
- Historic photos uploaded to points at approximate locations





REDUCED SIZE REPRODUCTION

NATIONAL CAPITAL
PARK AND PLAYING COMMISSION
GEORGE WASHINGTON MEMORIAL PARKWAY
UPPER POTOMAC - MARYLAND
DISTRICT OF COLUMBIA TO GREAT FALLS
PROJECT PLAN
FEB 50

NP-2-MD

NP-1-MD

REDUCED SIZE REPRODUCTION

NATIONAL CAPITAL
PARK AND PLANNING COMMISSION
GEORGE WASHINGTON MEMORIAL PARKWAY
JUNIOR, POTOMAC - MARYLAND
DISTRICT OF COLUMBIA



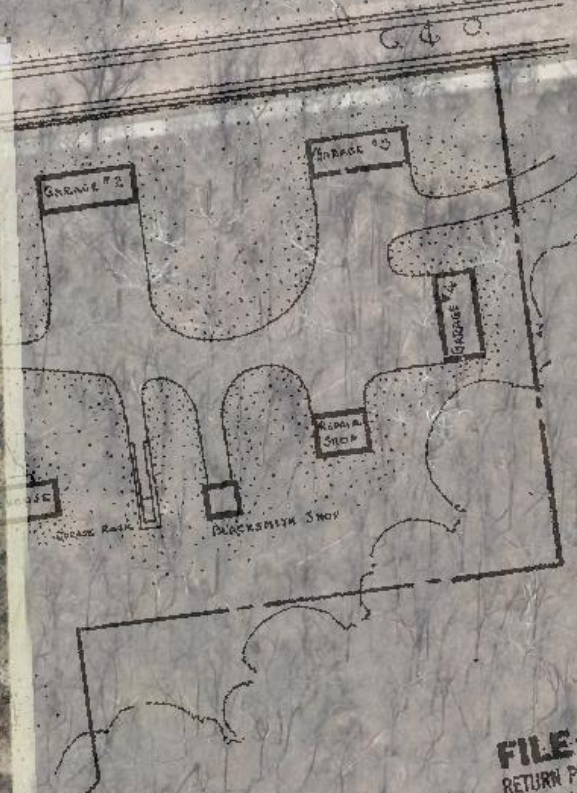
FILE COPY
RETURN PROMPTLY TO
NATIONAL CAPITAL PARKS MAP FILE

GENERAL PLAN
CAMP CARDEROCK
N.D. 1 MD.
C.C.C. COMPANY 325
CABIN JOHN MD.
NATIONAL CAPITAL PARKS
SCALE 1"=50'
JANUARY 5, 194

REDUCED SIZE REPRODUCTION



3RD.OBSN. SQDN(XV-1500)(CCCCAMP NO NP-1) WASHINGTON,D.C



FILE COPY
RETURN PROMPTLY TO
NATIONAL CAPITAL PARKS MAP FILE

GENERAL PLAN
CAMP CARDEROCK
N.D. 1 MD.
C.C.C. COMPANY 325
CABIN JOHN MD.
NATIONAL CAPITAL PARKS

SCALE 1"=50'
JANUARY 5, 194

PRODUCTION



FILE COPY
RETURN PROMPTLY TO
NATIONAL CAPITAL PARKS MAP FILE

GENERAL PLAN
CAMP CARDEROCK
N.D. 1 MD.
C.C.C. COMPANY 325
CABIN JOHN MD.
NATIONAL CAPITAL PARKS
SCALE 1"=50'
JANUARY 5, 194

3RD OBSN. SQDN (CV-1500) (C.C.C. CAMP NO. NP-1) WASHINGTON, D.C.



Garage #3

Garage #2

Garage #1

Garage #4

Oil House

Repair Shop

Blacksmith
shop

Store House

Service
Garage

Mess
Hall/Kitchen

Barracks #4

Barracks #1

Latrine

Office Comm.

Office
N.P.S.

Barracks #3

Latrine

Barracks #2

Barracks #5

N.P.S.
Personnel

Commandants
Res.

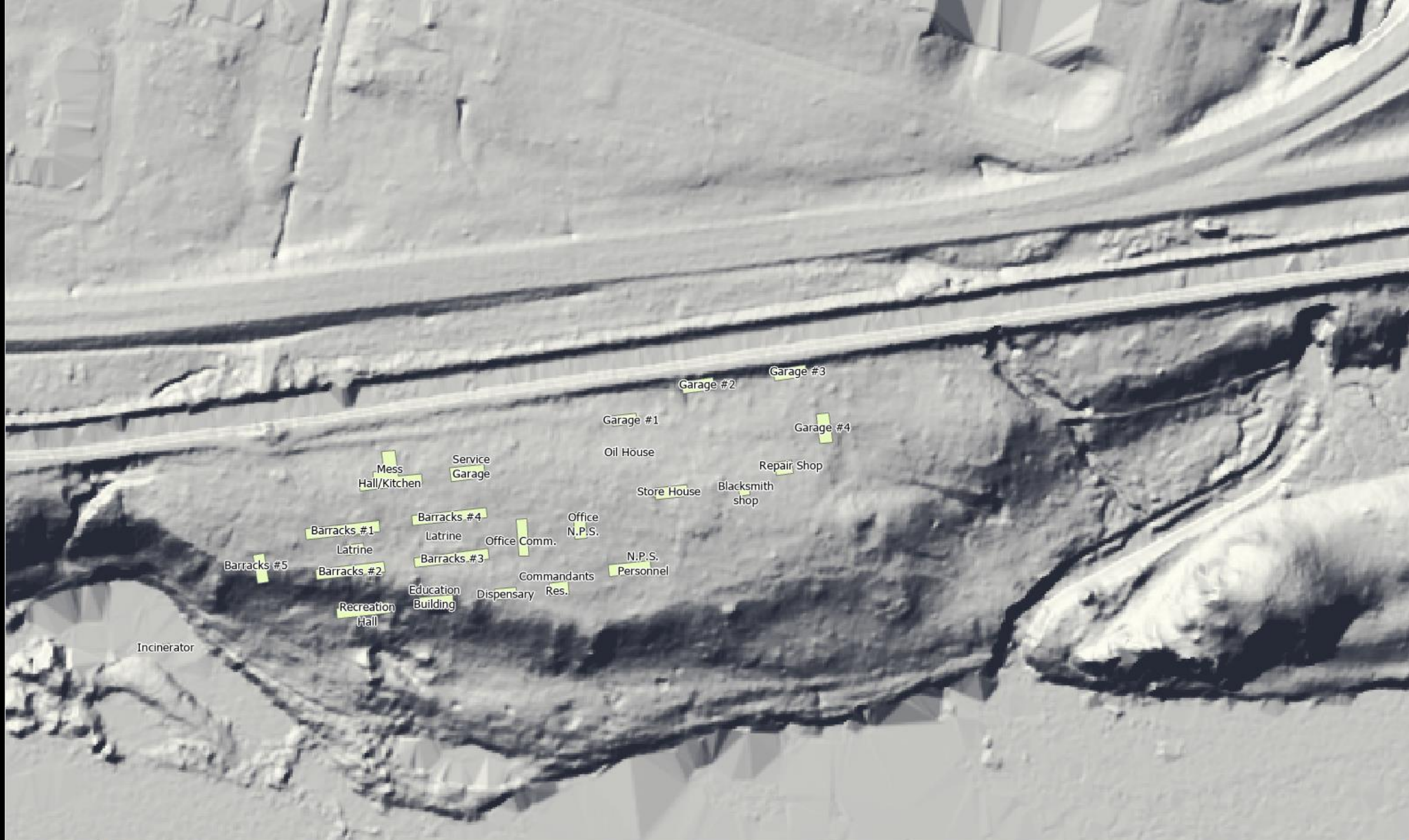
Dispensary

Education
Building

Recreation
Hall

Incinerator

Billy Goat
Section C
(1.6 mi)







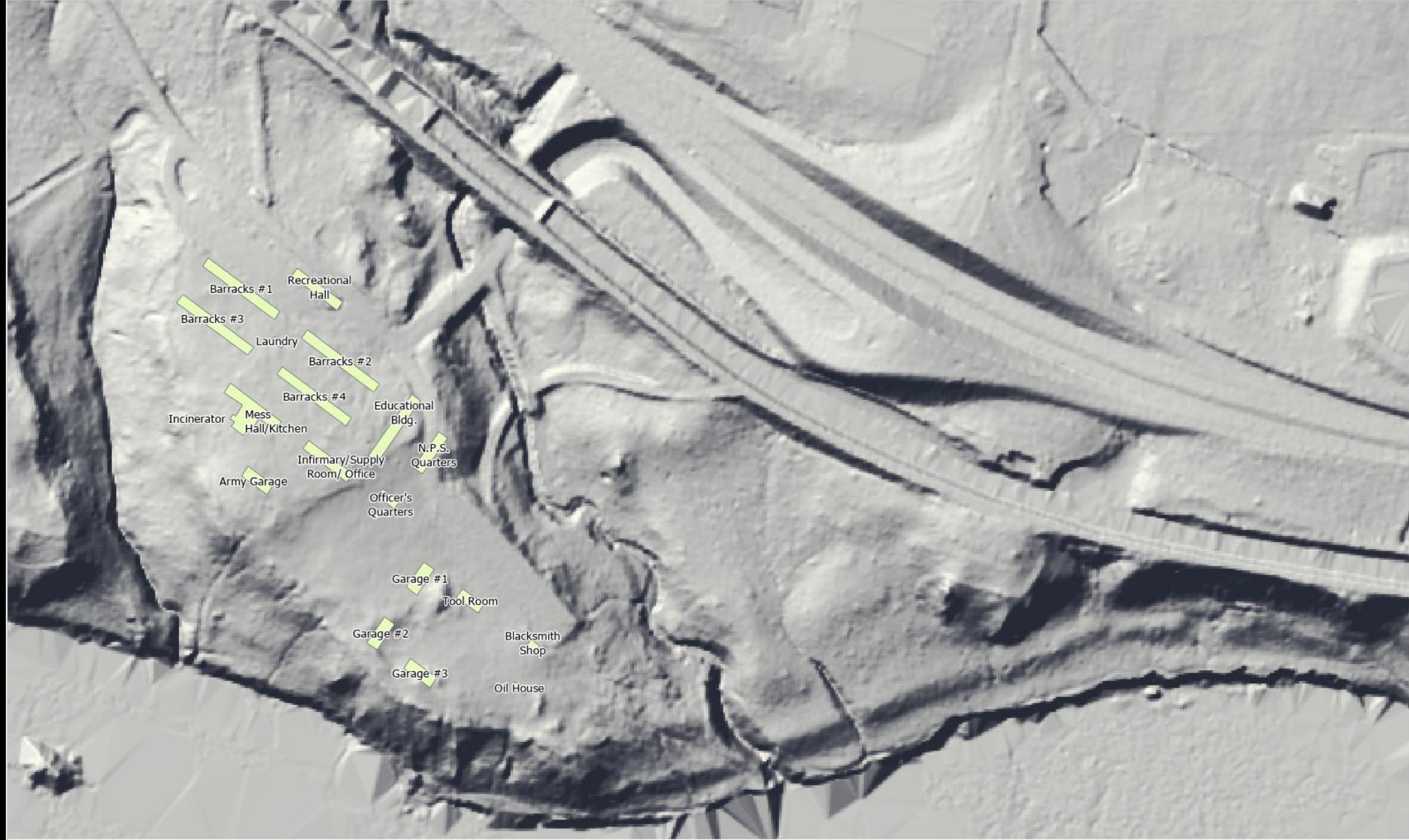
Barracks #1
Recreational Hall
Barracks #3
Laundry
Barracks #2
Mess Hall/Kitchen
Barracks #4
Incinerator
Infirmary/Supply Room/Office
Educational Bldg.
N.P.S. Quarters
Army Garage
Officer's Quarters
Garage #1
Tool Room
Garage #2
Blacksmith Shop
Garage #3
Oil House

Symbol	Description
[Symbol]	Building
[Symbol]	Well
[Symbol]	Water
[Symbol]	Drainage
[Symbol]	Path
[Symbol]	Boundary
[Symbol]	...

Symbol	Description
[Symbol]	Building
[Symbol]	Well
[Symbol]	Water
[Symbol]	Drainage
[Symbol]	Path
[Symbol]	Boundary
[Symbol]	...

THESE BUILDINGS WERE DESIGNED BY THE U.S. ARMY ARCHITECTURAL SERVICE, WASHINGTON, D.C. IN 1918. THE BUILDINGS WERE CONSTRUCTED BY THE U.S. ARMY CONSTRUCTION BUREAU, WASHINGTON, D.C. IN 1919. THE BUILDINGS WERE DESTROYED BY JAPANESE AIR FORCE IN 1945. THE BUILDINGS WERE RECONSTRUCTED BY THE U.S. ARMY ARCHITECTURAL SERVICE, WASHINGTON, D.C. IN 1946. THE BUILDINGS WERE DESTROYED BY JAPANESE AIR FORCE IN 1945. THE BUILDINGS WERE RECONSTRUCTED BY THE U.S. ARMY ARCHITECTURAL SERVICE, WASHINGTON, D.C. IN 1946.





Barracks #1

Recreational
Hall

Barracks #3

Laundry

Barracks #2

Barracks #4

Incinerator

Mess
Hall/Kitchen

Educational
Bldg.

Infirmary/Supply
Room/ Office

N.P.S.
Quarters

Army Garage

Officer's
Quarters

Garage #1

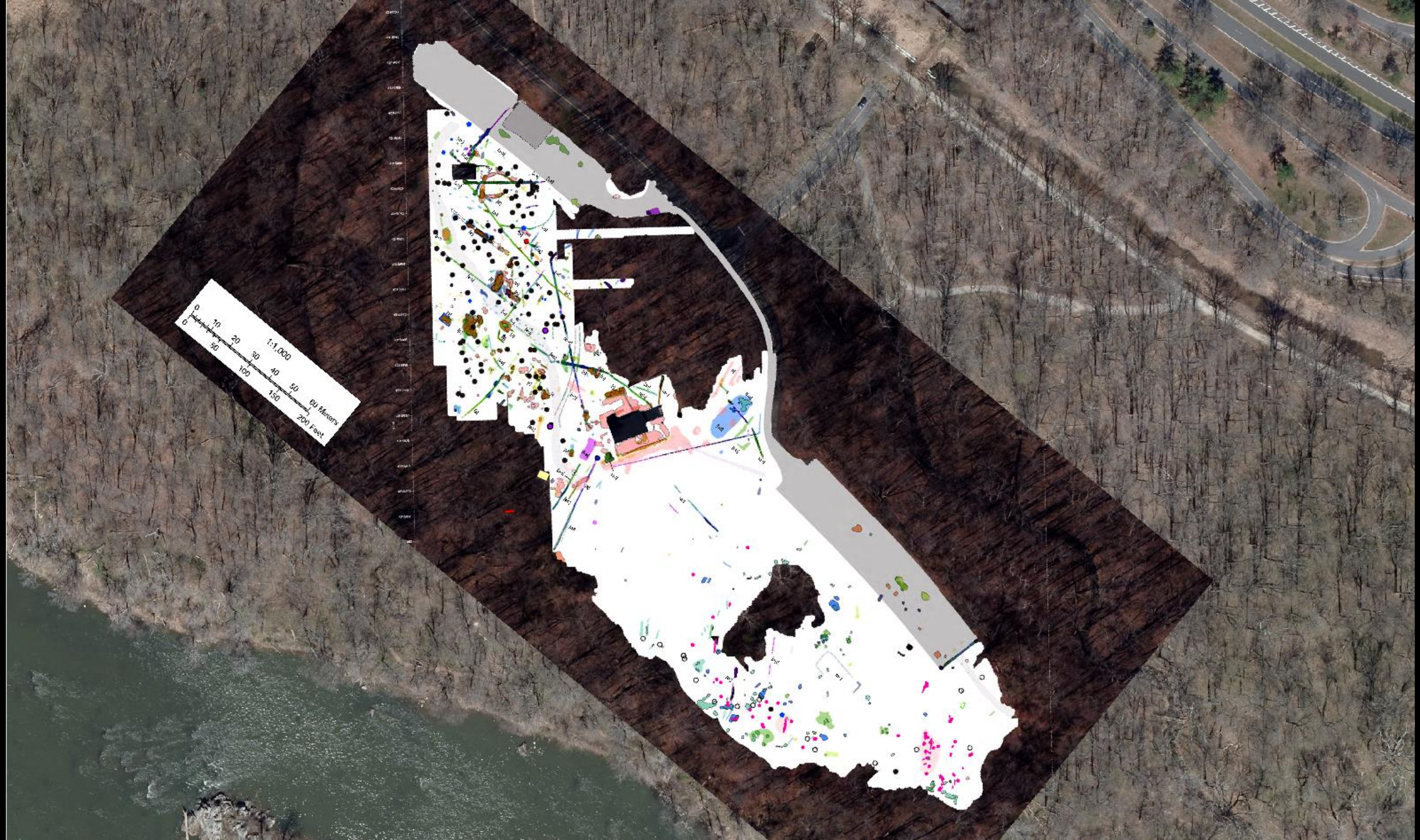
Tool Room

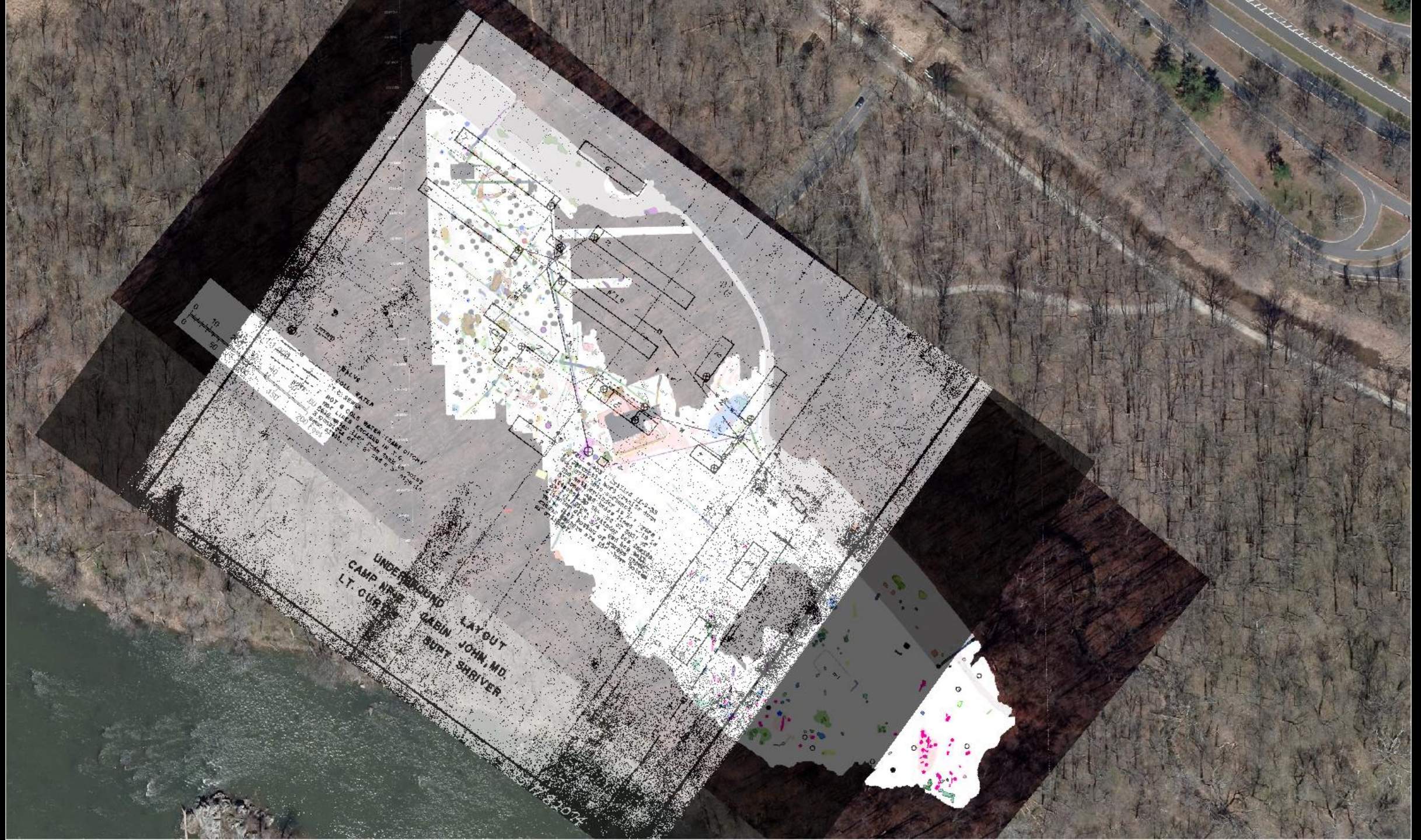
Garage #2

Blacksmith
Shop

Garage #3

Oil House







(3RD. OBSN. SQDN) (O-500) (C.C.C. CAMP NO. NP-2) WASHINGTON, D.C.



This map contains sensitive information, for NPS use only.

42745.093226

OBJECTID	15
Shape_Length	42745.093226
Shape_Area	3550237.163745
Section	14
Lock 14 May 15-31 1939.PNG	

10. Count of 14 on the north side

111 Stone wall 100m x 100m
112 Stone wall 100m x 100m of 100m
113 Rebuilt wall 100m x 100m of 100m
114 Rebuilt wall 100m x 100m of 100m
115 Rebuilt wall 100m x 100m of 100m
116 Rebuilt wall 100m x 100m of 100m
117 Rebuilt wall 100m x 100m of 100m
118 Rebuilt wall 100m x 100m of 100m
119 Rebuilt wall 100m x 100m of 100m
120 Rebuilt wall 100m x 100m of 100m

10

[Lock 14 November 15-30 1938.PNG](#)
[Lock 14 December 1-15 1938.PNG](#)
[Lock 14 December 16-31 1938.PNG](#)
[Lock 14 January 1-15 1939.PNG](#)
[Lock 14 January 16-31 1939.PNG](#)
[Lock 14 February 16-28 1939.PNG](#)
[Lock 14 April 1-15 1939.PNG](#)
[Lock 14 April 16-30 1939.PNG](#)
[Lock 14 May 1-15 1939.PNG](#)
[Lock 14 May 15-31 1939.PNG](#)

	LABOR	TRUCKS	MAT.	FP-712
15. Lock 12 and up to next lock				
(A) Pump and drain water				
(B) Clean lock and canal of debris				
(C) Rebuild retaining wall between locks				
(D) Rebuild and grade tow path				
(E) Repair lock walls				
(F) Remove-build-install lock gates				
(G) Repairs to stop sills and floor of locks				
(H) Repairs to lock house				
16. Lock 13 up to next lock				
(A) Pump and drain water				
(B) Clean lock and canal of debris				
(C) Rebuild retaining wall between locks				
(D) Rebuild and grade tow path				
(E) Repair lock walls				
(F) Remove-build- install lock gates				
(G) Repairs to stop sills and floor of locks				
(H) Repairs to lock house				
17. Lock # 14 up to next lock				
(A) Pump and drain water				
(B) Clean lock and canal of debris				
(C) Rebuild retaining wall between locks				
(D) Rebuild and grade tow path				
(E) Repair lock walls				
(F) Remove-build- install lock gates	4.00			
(G) Repairs to stop sills and floor of locks				
(H) Repairs to lock house				
18. Lock # 15 up to next lock				
(A) Pump and drain water				
(B) Clean lock and canal of debris				
(C) Rebuild retaining wall between locks				
(D) Rebuild and grade tow path				
(E) Repair lock walls				
(F) Remove-build-install lock gates				
(G) Repairs to stop wills and floor of locks				
(H) Repairs to lock house				
19. Lock # 16 up to next lock				
(A) Pump and drain water			1.35	26.40
(B) Clean lock and canal of debris				
(C) Rebuild retaining wall between locks				
(D) Rebuild and grade tow path				
(E) Repair lock walls	6.30	10.40	184.24	1,630.01
(F) Remove-build-install lock gates			19.07	
(G) Repairs to stop sills and floor of locks				
(H) Repairs to lock house				

- CCC workers performed more manual labor
- Mainly cleaned canal of debris and completed more simple repairs
- Restored canal to be watered
- Gathered supplies together for stone masons

28.	Repairs to Seneca Dam				
29.	Preparatory Work		.45		
30.	Tool sheds and boxes	124.05	4.10		10.40
32.	Haul gate material from G.F. to 15 & C.	15.44	1.60		
35.	Repairs to dredge	57.32			133.80
36.	Repair read Chain Bridge to Brookmont	348.73	22.70		13.00
37.	Repair old steam equipment				
38.	Repair old gas equipment	8.35	.75		77.30
39.	Check assort and store material Chain Bridge	70.00			
40.	Repairs to tools	163.27		9.60	
42.	Repair old road under Canal at Fletchers				
43.	Get out stone for stonemasons	71.83	4.60		5.20
44.	Haul lock house fixturs from G.F. to Eng. Wharf				
46.	Necessary work for dedication	364.66	12.40	32.74	79.40

Pop-up

▲ CCC_Photos (1)

2

CCC_Photos - 2

OBJECTID 2

1940 04-26 below Lk15.tif



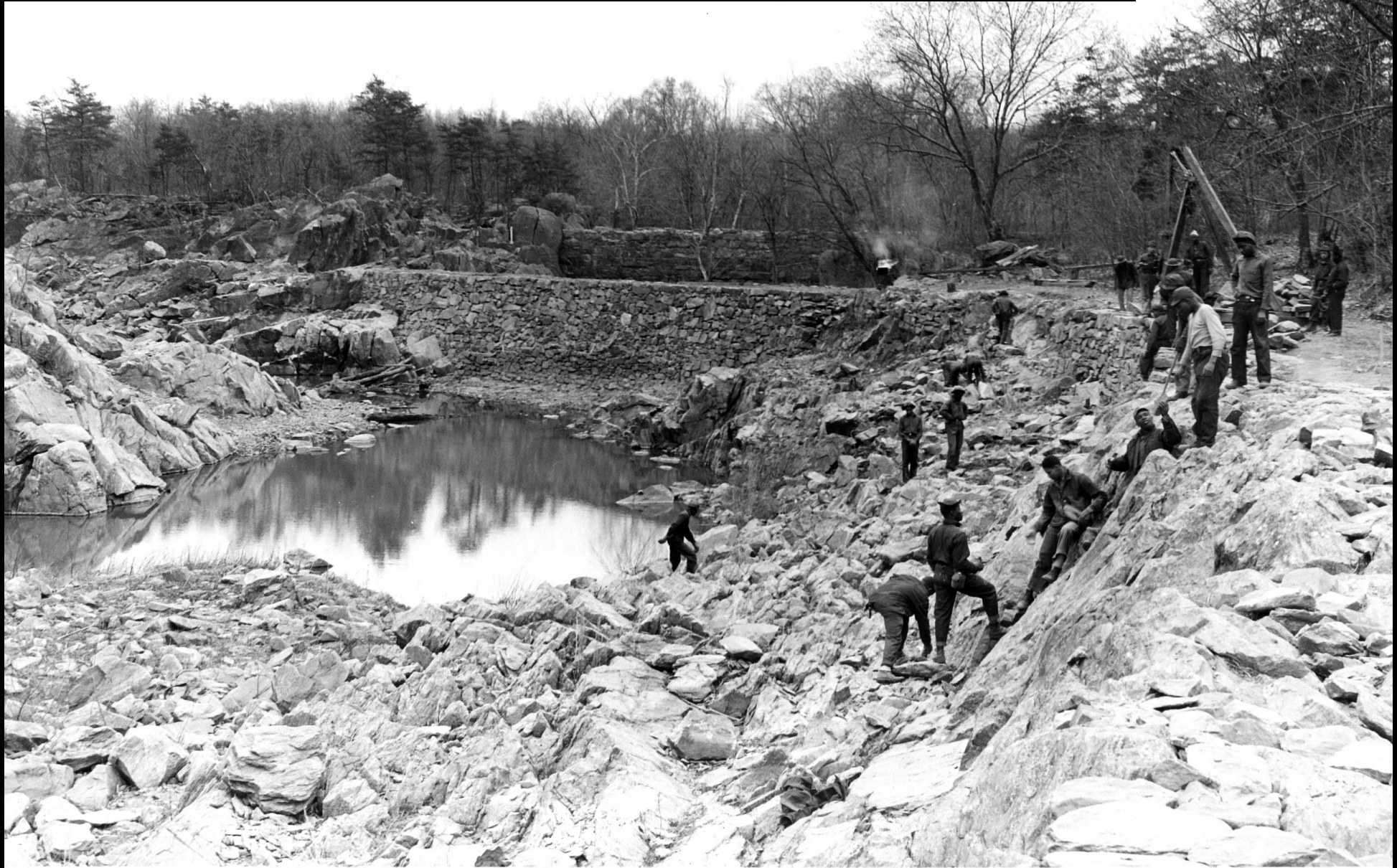
2

Attachments:

[1940 04-26 below Lk15.tif](#)

[From Lock 15 looking toward widewater-1.JPG](#)

Working on towpath below Lock 15



Looking below Lock 15 towards Widewater





Woodworking Class at NP-1-
MD (National Archives)

6:00 AM: First Bugle, get out of bed
6:30 AM: Reville, Flag Ceremony
7:00 AM: Breakfast
7:30 AM: General clean-up of camp buildings and grounds
7:50 AM: Work Call
12:00 Noon: Dinner
4:00 PM: Return from work project
5:00 PM: Retreat, Flag Ceremony
5:10 PM: Supper
6:00-9:00 PM: Classes
9:00 PM: Lights extinguished in barracks
10:00 PM: General lights extinguished

From Howard, example of schedule
at CCC Camp





Work being performed at Widewater

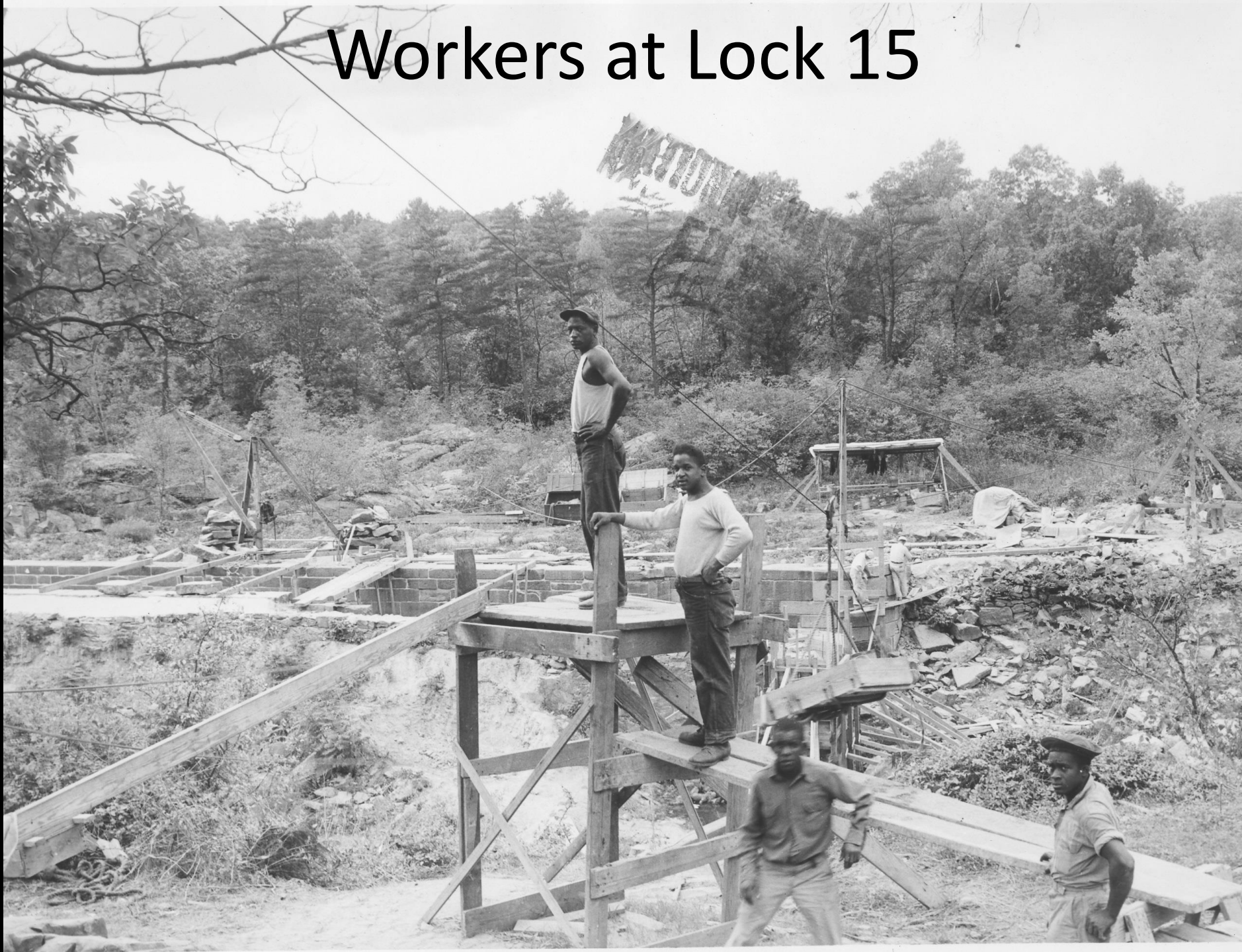




Lock 15 from downstream



Workers at Lock 15





From Stop Gate looking
downstream towards
Lock 16





Lock 16 from downstream



Challenges

- Georeferencing is not 100 percent accurate, especially with older maps
- Very limited records on what work was performed – access to NARA
- Records that we have access to are not very detailed
- Few CCC-era records on file at C&O Canal Headquarters

Opportunities for Continued Research:

- National Archives contains 725 cubic feet of CCC records from 1933-1953
- Records include over 10,000 photographs, 590 linear feet of general records, 457 linear feet of blueprints, and 2 reels of motion pictures
- Possibilities that photographs and diaries exist with descendant family members
- Possible some long lost pictures and other information about the CCC camps along the C&O Canal
- Genealogical studies
- Connecting with descendants

References

- *Civilian Conservation Corps Activities in the National Capital Region of the National Park Service.*
- Historical photos courtesy of the National Archives.
- Howard, Josh. *“Our Only Alma Mater”: The Civilian Conservation Corps and the C&O Canal.* 2017.
- [National Archives |](#)
- [What is a geographic information system \(GIS\)? \(usgs.gov\)](#)



Questions?

