



City of Leipzig
Host of the WCC 2022

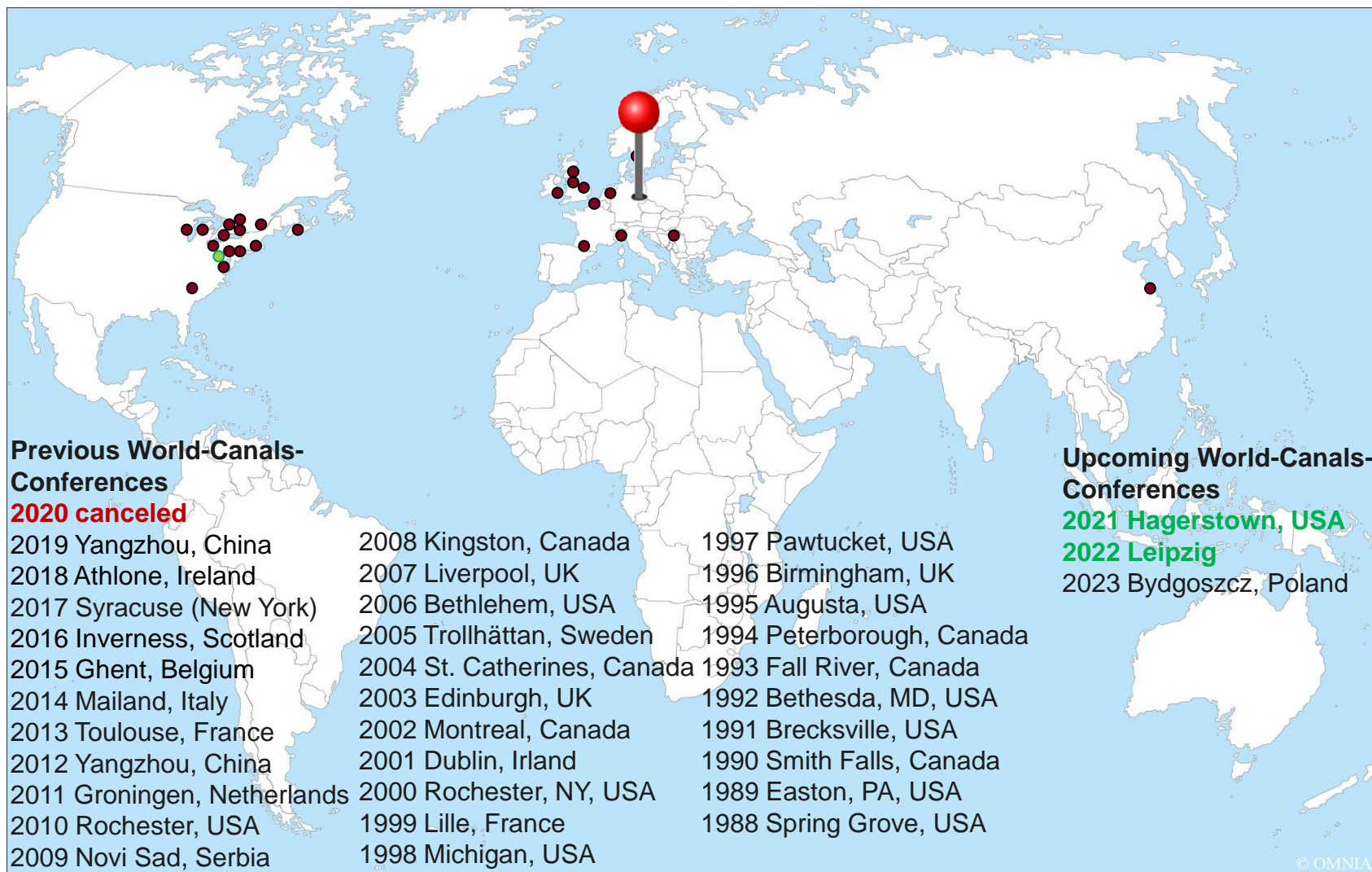
The World Canals Conference 2022

Date: September 2, 2021

Presenter: Ulrich Hörning
City of Leipzig, Deputy Mayor of General Services



Hosts of the Word Canals Conference



Germany has never hosted the WCC before

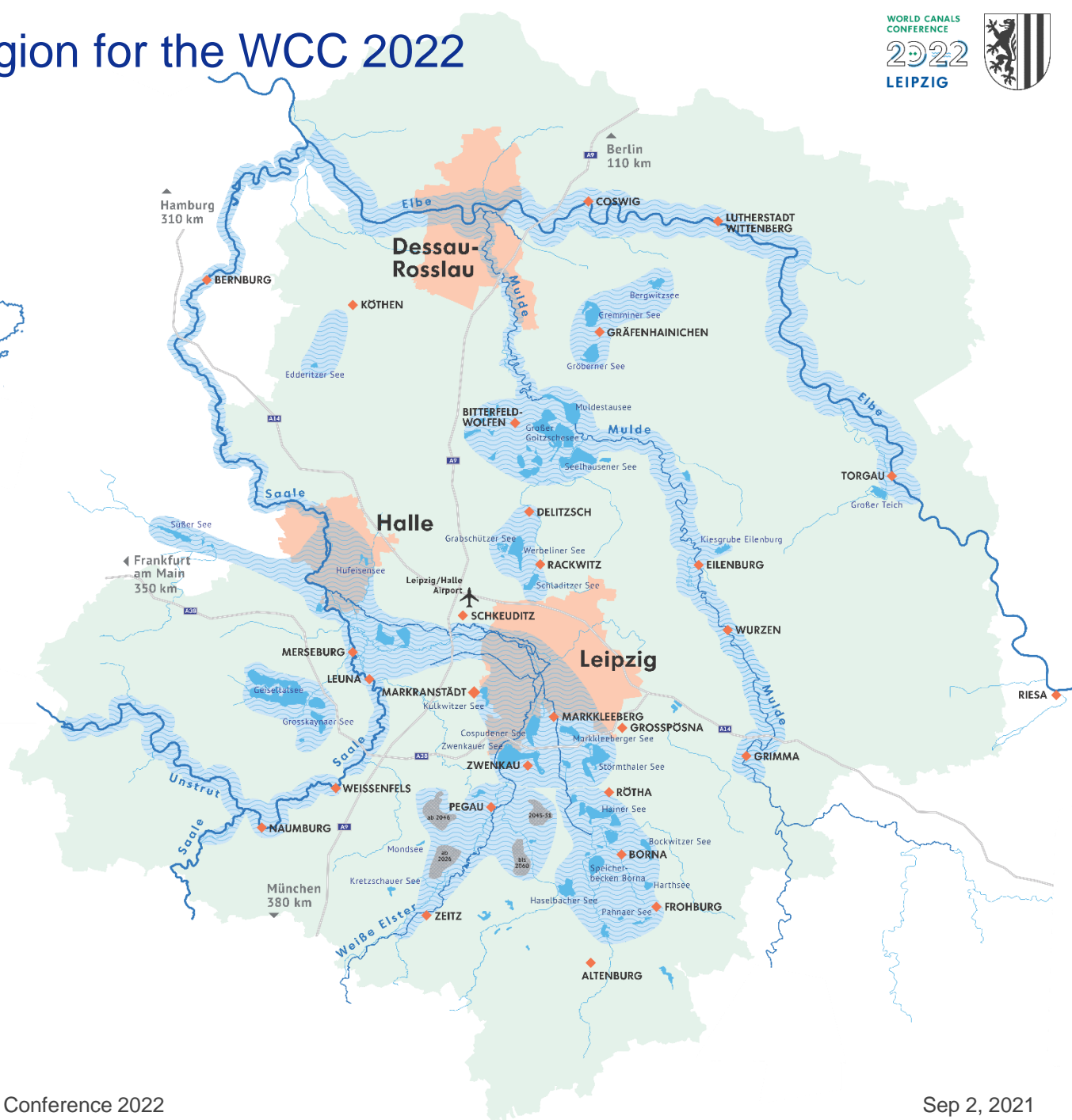
THE PLACE
TO BE IN 2022:
LEIPZIG
AND ITS
WATERSCAPE



Welcome to Leipzig!

The applying region for the WCC 2022

WORLD CANALS
CONFERENCE
2022
LEIPZIG



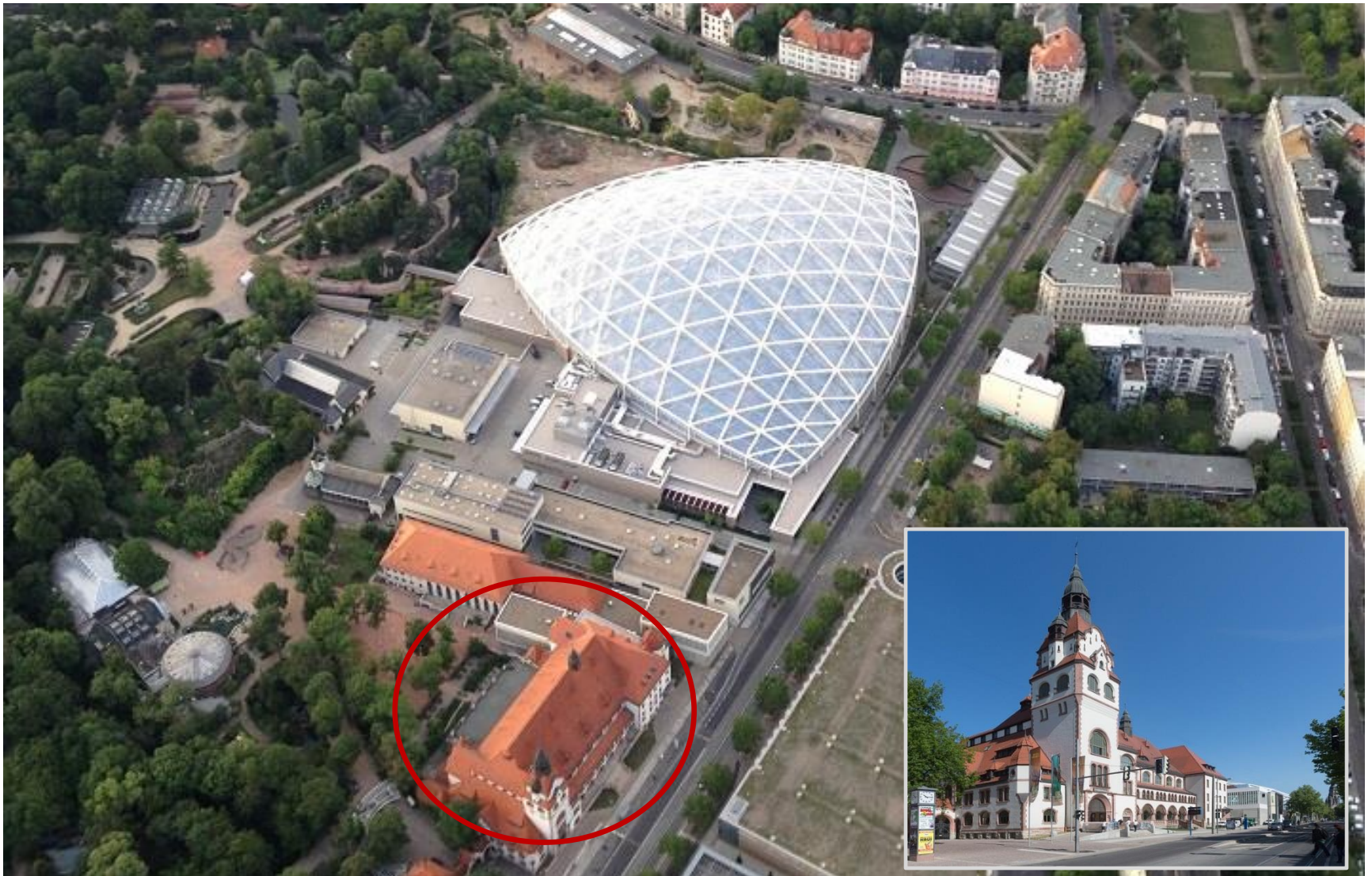
Heritage and vision – the transformation process of a lignite mining region to a diverse and valuable water landscape in Central Germany

- History and heritage
- Transformation and regeneration
- Urban and regional development
- Tourism, economy, ecology and sociology
- Culture and landscape
- Electric mobility on the water (model region)
- Climate change
- Sustainability and urban health
- Urban water bodies and their importance for recreation during the pandemic



Venue of the WCC 2022 – KONGRESSHALLE am Zoo

WORLD CANALS
CONFERENCE
2022
LEIPZIG



When and where will the WCC 2022 take place in Leipzig?

- From May 30 - Jun 3, 2022 in the KONGRESSHALLE am Zoo Leipzig with the headline

„Reshaping landscapes – Waterways in transition“

- From May 28 - 29, 2022 pre-conference excursions
- From Jun 4 - 5, 2022 post-conference excursions
- Cooperation project of the City of Leipzig with Grüner Ring Leipzig, the Leipziger Messe GmbH and the Metropolregion Mitteldeutschland



Logo of the WCC 2022



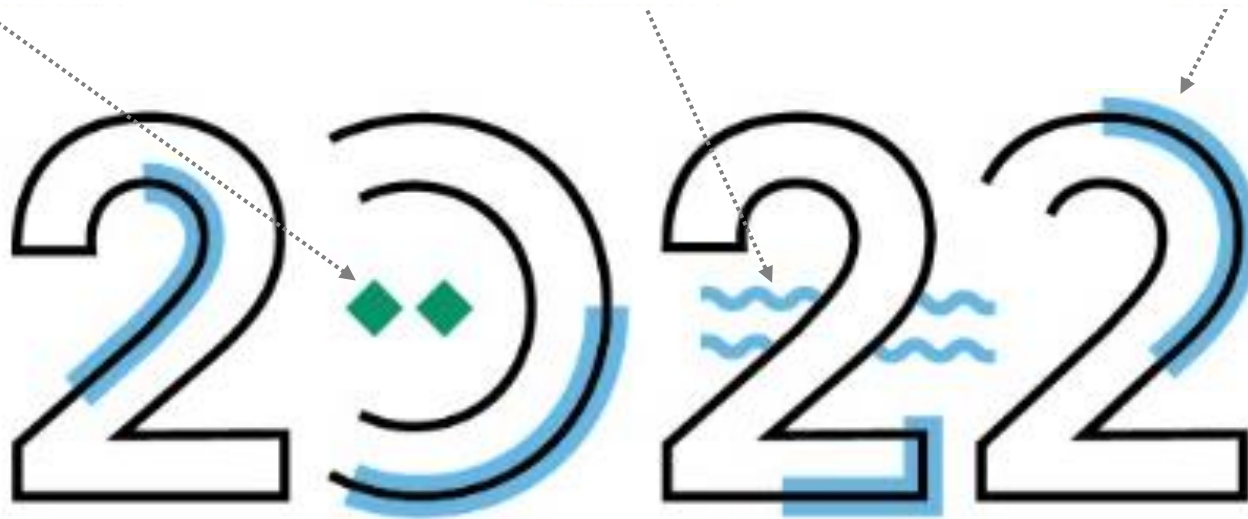
city



river



lake



**WORLD CANALS
CONFERENCE**



LEIPZIG

Landschaften neu gestalten – WasserWege im Wandel

Reshaping landscapes – Waterways in transition

www.wccleipzig2022.com

Geographical location of Leipzig and facts about Leipzig

WORLD CANALS
CONFERENCE
2022
LEIPZIG



- Inhabitants: 605.400 (2020)
- Surface: 297,8 km²
- More than 20 million inhabitants within a radius of 200 km from Leipzig

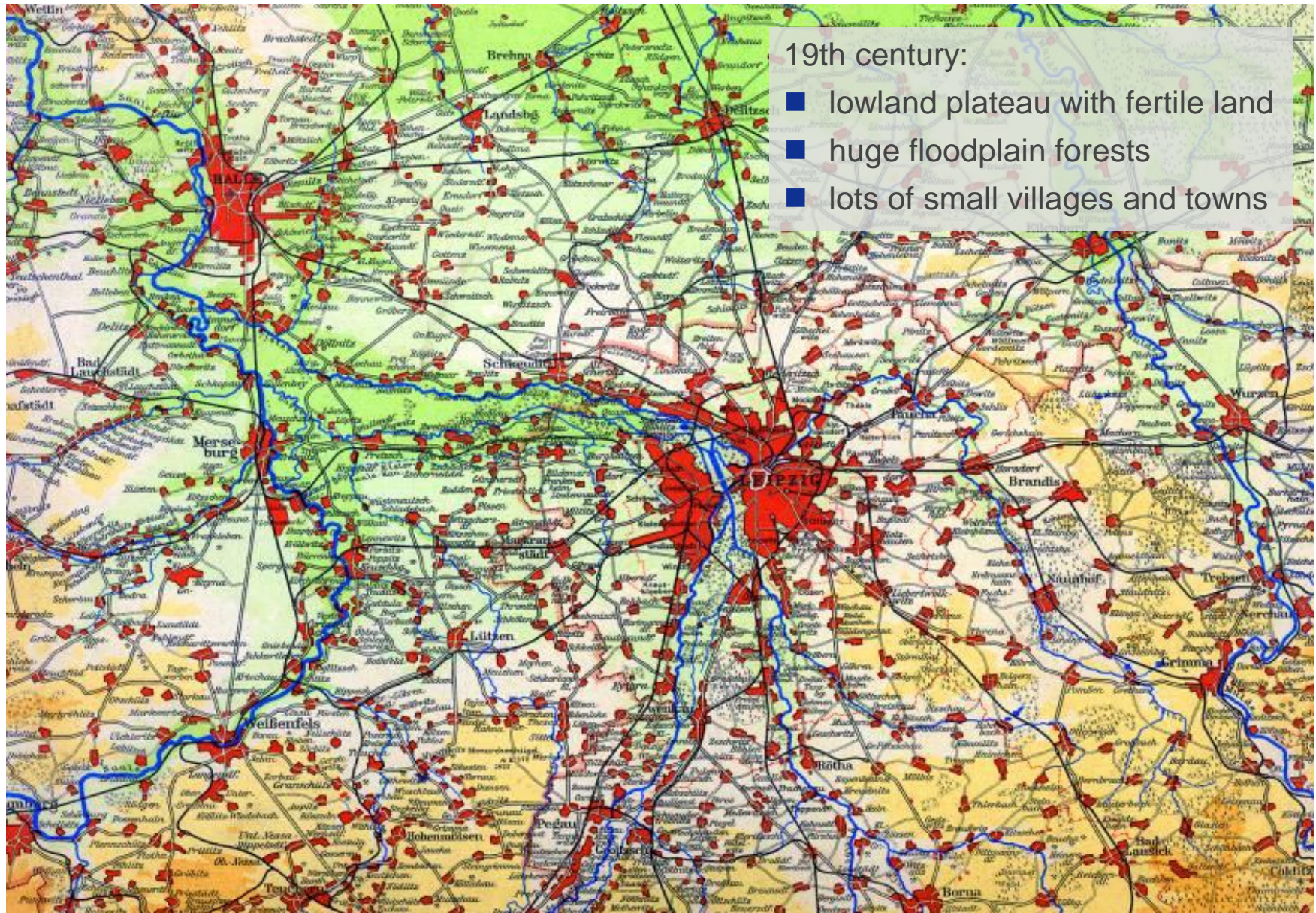


- Excellent connections by train, car and airplane
- Important companies: BMW, Porsche, DHL, Amazon, Leipziger Messe
- Cultural, creative and scientific centre of Central Germany

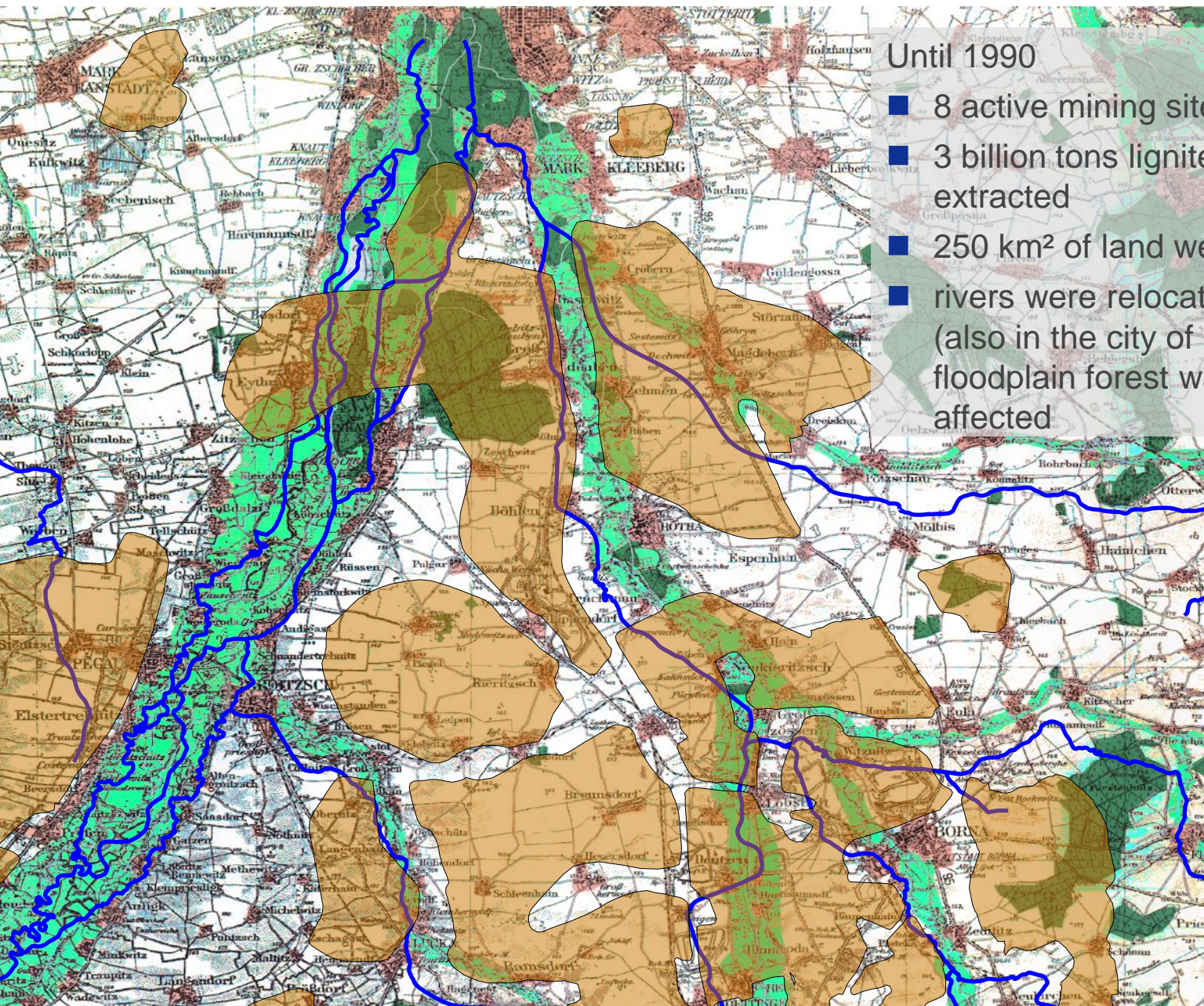


© Grüner Ring Leipzig / Zábojník

History – Landscape before lignite/ brown coal



Lignite mining landscape – Facts about the south of Leipzig



Until 1990

- 8 active mining sites
- 3 billion tons lignite were extracted
- 250 km² of land were dug off
- rivers were relocated and tubed (also in the city of Leipzig), floodplain forest was negatively affected



- Lignite mining:
1989 106 Mio. t – 2015 19 Mio.
- Employees:
1989 60.000 – 2015 2.800



Regionaler Planungsverband
West Sachsen

1951

Lignite mining landscape – Lost places and sites



Until 1990, 70 villages and towns in the south of Leipzig were devastated and 24.000 people resettled



Political Change in the GDR – 1988 and following years

Cospuden 1985

Source: LMBV



1990 – citizens' initiative stops the exploitation of the opencast mining Cospuden due to the very bad environmental conditions and saves a substantial area of floodplain forest



Source: Bundesarchiv

Political Change in the GDR – Peaceful Revolution 1989



Landscape transformation

- Discover the Central Germany region in transition – from a open-cast mining area to a diverse and valuable water landscape.



Connection: historical and new

- Experience the attractive connection between natural and newly created artificial water bodies.



Collective approach

- Get to know us: the actors of a successful interregional cooperation.



Quality and diversity

- Immerse into the cultural wealth and unique scenic richness of the region.



Topics for the WCC 2022 in Leipzig

Structural change and transformation	Challenges and potentials of development	Infrastructure and water-based tourism	Global sustainability and health	Cooperation and structures
<ul style="list-style-type: none"> – Coal mining regions and landscapes – Landscape transformation – Management of cultural heritage – Remediation as a result from transformation processes – Industrial culture – ... 	<ul style="list-style-type: none"> – Climate resilience – Flood protection, drought – Biodiversity – Alternative drive systems on water – Water in the city – ... 	<ul style="list-style-type: none"> – New uses and structures for inland waterways – Special technical facilities and bridges – Economic effects – Architecture and inland waterways – ... 	<ul style="list-style-type: none"> – Sustainability and riverside landscapes/ alluvial forest – Ecology and water-based tourism – Accessibility – Water bodies and their influence on health – Water sport – Urban water bodies and their importance for recreation during the pandemic 	<ul style="list-style-type: none"> – Public participation and NGO's involvement – Networks to develop inland waterways in Germany, Europe and worldwide – Student competition

Structural change and transformation

- Coal mining regions and landscapes
- Landscape transformation
- Management of cultural heritage
- Remediation as a result from transformation processes
- Industrial culture

– ...

■ Landscape transformation

- Water quality of the lakes and rivers as a result of brown coal mining
- Management of relocation of rivers required/ caused by mining activity
- How do other regions manage these issues?



Structural change and transformation

- Coal mining regions and landscapes
- Landscape transformation
- Management of cultural heritage
- Remediation as a result from transformation processes
- Industrial culture

– ...

- structural break (after 1990)/ **structural change** 2018 and the following years – phase-out of fossil fuel
 - Transformation from lignite mining landscape to water landscape
 - What significance do the emerging lake districts play in structural change (e.g. financing of water tourism and the related infrastructure)?
 - What significance do the emerging lake districts play in the extension of inland waterways (e.g. for users and water tourism related companies)?



Challenges and potentials of development

- Climate resilience
- Flood protection, drought
- Biodiversity
- Alternative drive systems on water
- Water in the city

– ...

■ Multifunctionality of waterways

- Climate change management: climate resilience, flooding, drought, use of open-cast mining lakes for flood protection
- Conflicts of uses: high-performance and mass sports, leisure, passenger shipping, freight transport, fishing
- Sites for German engineering skills and historical hydraulic engineering



Challenges and development potential

- Climate resilience
- Flooding protection, drought
- Biodiversity
- Alternative drive systems on water
- Water in the city

■ Water in the city:

- Which importance do inner city waterways have for the city development and for the life quality?
- For example St. Petersburg: built in the 18th century by Tsar Peter the Great in an area previously covered by water. Currently the city struggles with climate change and its effects



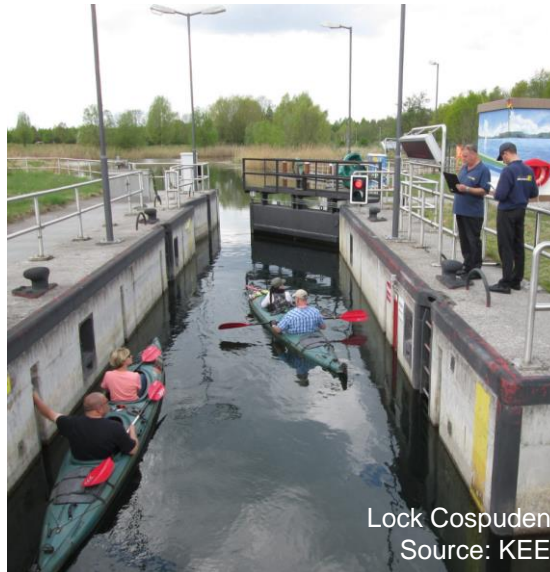
Source: Russian Nautical Agent LLC, 2018

Cooperations and structures

- Public participation and NGO's involvement
- Networks to develop inland waterways in Germany, Europe and worldwide
- Student competition
- Engagement of volunteers during the conference

– ...

- Cooperation with NGOs, employment sector, universities, research institutions amongst others
 - E.g. collaboration with job creation programmes for the maintenance of the locks in Connewitz and Cospuden in Leipziger Neuseenland



Cooperations and structures

- Public participation and NGO's involvement
- Networks to develop inland waterways in Germany, Europe and worldwide
- Student competition

– ...

■ Cooperation with universities

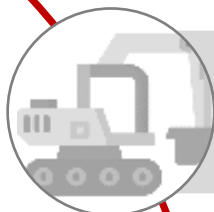
- Involvement of next generations in the development of water bodies through student competitions



WCC Leipzig 2022: The Programme (1)

	Pre-Conference		WCC Expert Conference					Post-Conference		
	Saturday May 28, 2022	Sunday May 29, 2022	Monday May 30, 2022	Tuesday May 31, 2022	Wednesday Jun 1, 2022	Thursday Jun 2, 2022	Friday Jun 3, 2022	Saturday Jun 4, 2022	Sunday Jun 5, 2022	
08:30	1 - 2 days tours (incl. accommodation, transfer service, professional accompaniment etc.) 1. Niederfinow ship lift, Finow Canal 2. Spree Forest and Lusatian lake district 3. Lake Geiseltalsee and Halle (Saale)		Lake Zwenkau and lake Cospuden	Official opening Keynotes	Keynotes			1 - 2 days tours (incl. accommodation, transfer service, professional accompaniment etc.) 1. Dresden 2. Magdeburg 3. Lutherstadt Wittenberg		
tour in/around Leipzig			3 parallel sessions: discussion sessions, presentations			Keynotes				
			12:15 - 13:15 Uhr Lunch break							
11:00			Arrival, registration etc.			3 parallel sessions: discussion sessions, presentations				
14:00						5 parallel tours (incl. dinner and cultural frame programme) Tour to Ferropolis (incl. dinner and cultural frame programme)				tour in/around Leipzig
	Conference dinner									
15:00			Welcome reception with mayor of Leipzig							
19:00										

WCC Leipzig 2022: The Programme (2)



TUESDAY, MAY 31, 2022

TRANSFORMATION: CHANGE OF INDUSTRY & LANDSCAPE



WEDNESDAY, JUN 1, 2022

TRANSFORMATION: TRANSITION OF EVERYDAY LIFE



THURSDAY, JUN 2, 2022

TRANSFORMATION: CHALLENGES AND POTENTIALS OF WATERWAYS



FRIDAY, JUN 3, 2022

TRANSFORMATION: LIVELY AND LIVEABLE WATER LANDSCAPE

Top-class speakers:

- **Virginijus Sinkevičius:** EU Commissioner for the Environment, Oceans and Fisheries
- **Guido Puhmann:** Head of the Middle Elbe Biosphere Reserve
- **Robert Marx:** President of the German federal association of the water sports economy (BVWW)
- **Dr. Norbert Salomon:** Head of Department Waterways and Shipping at the German Federal Ministry of Transportation and Digital Infrastructure (BMVI)
- **Prof. Dr. Dr. h.c. Dietrich Borchardt:** Head of the Department of Aquatic Ecosystem Analysis at Helmholtz Centre for Environmental Research (UFZ)
- **Dr. Johannes Franke:** Scientific instructor for agriculture and geology at the Saxon State Office for Environment, Agriculture and Geology (LfULG)
- **Heide Jekel:** President of the International Commission for the Protection of the Elbe River (ICPER)
- ...and many more

WCC 2022: The Excursions (1)

... during the conference:

May 30, 2022

Water City
Leipzig

Active pitch
United
Schleenhain
+ lake
Hainer See

Saale-
Elster-Canal

May 31, 2022

Lakes:
Markkleeberg
+ Störmthal

Lakes:
Schladitz +
Werbeliner

Lake:
Grosse
Goitzsche

Naumburg/
Saale river +
Unstrut river

Jun 2, 2022

Water City
Leipzig

Active pitch
United
Schleenhain
+ lake
Hainer See

Saale-
Elster-Canal

...for accompanying persons:

May 31, 2022

Dessau-
Wörlitz
Garden
Realm

Jun 1, 2022

Sparkling
wine cellar
Freyburg

Jun 2, 2022

Sightseeing
tour Leipzig

Jun 3, 2022

Town
Weissenfels



Peter Hirth



Daniela Kuhnert



Stadt Leipzig



Dessau Tourismus



Gutsausschank Boy



WCC 2022: The Excursions (2)

... the pre-conference:

May 28, 2022 / May 29, 2022

Niederfinow ship
lift, Finow Canal



Lusatian lake
district



Lake Geiseltal +
City Halle
(Saale)



... the post-conference:

Jun 4, 2022 / Jun 5, 2022

City Dresden,
old town and
boat tour on Elbe
river



City Magdeburg,
waterway-bridge



World Heritage
Wörlitz



WCC Leipzig 2022: The Excursions – During the main conference I

City of Leipzig



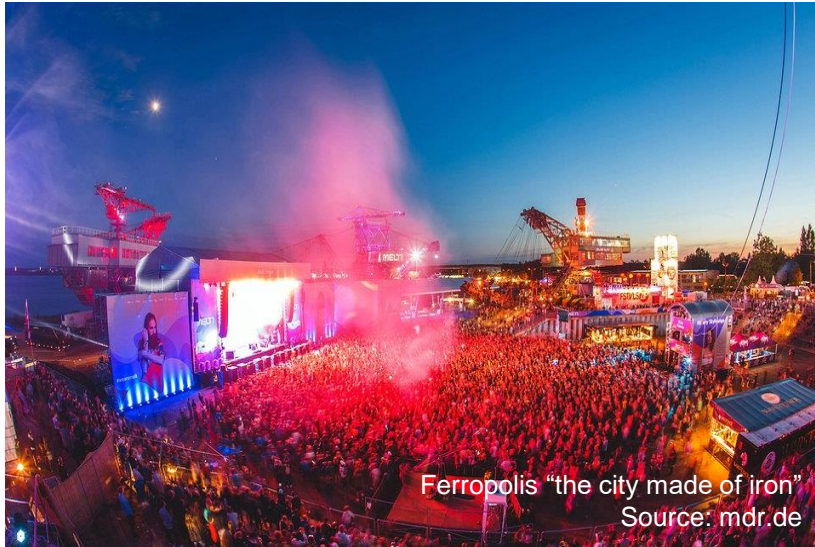
News lakes in the region



Designation of nature conservation area at the lake Werbelin



WCC Leipzig 2022: The Excursions – During the Main Conference II



Ferropolis “the city made of iron”
Source: mdr.de



Dessau-Wörlitz Garden Realm
Source: Dessau Tourismus



Town Halle (Saale)
Source: Halle Stadtmarketing



Town Freyburg
Source: Gutsausschank Boy

WCC Leipzig 2022: The Excursions – Pre- and Post-Conference



Lusatian Lake District



Dresden (© Allschutz)



Waterway crossroads Magdeburg



Boat lift, Finow Canal

Student Competition – Boat Lift Wüsteneutzsch

■ Ruin of the lock near the village Wüsteneutzsch



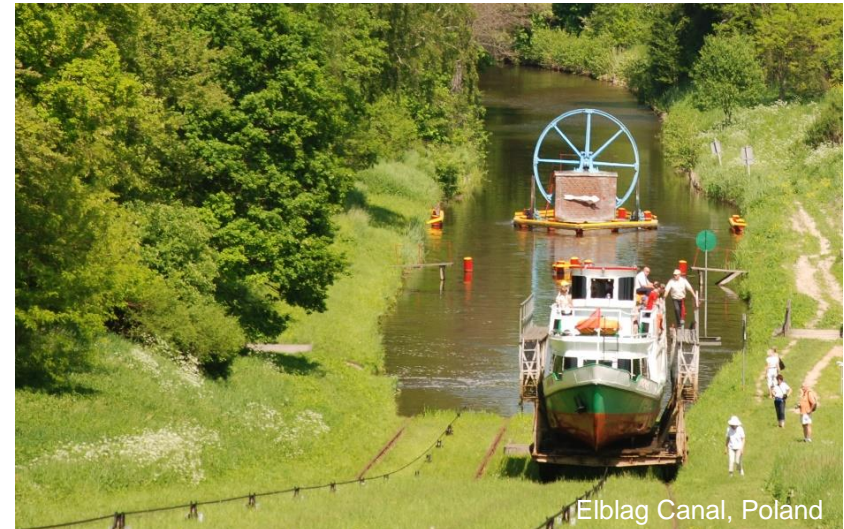
Source: Travepixels

Student Competition – Boat Lift Wüsteneutzsch

- Cooperation with German universities of excellence: RWTH Aachen University, TU Dresden, Karlsruhe Institute of Technology & TU of Munich
- Interdisciplinary collaboration: Architecture, civil engineering, landscape architecture, environmental sciences, urban planning, tourism industry and others
- Winning team: present their design during the WCC + prize money



Boat lift Strepý-Thiery, France



Elbląg Canal, Poland

Your benefits visiting the WCC 2022

- Share your knowledge about waterways and transformation worldwide
- Expand your nationwide and international network
- Share your expertise regarding current global and local challenges related to climate change, climate resilience, water quality, technical structures for waterways, tourism etc.
- Learn from each other, exchange good-practice-examples and latest technical developments
- Get to know us! Have a lot of fun in our vibrant city!



See you in the vibrant city of Leipzig!

- Registration and abstract submission are open at www.wccleipzig2022.com
- Please submit your abstract till Oct 31, 2021





Stadt Leipzig

Division for Waters and River
Development

04092 Leipzig

Tel.: +49 341 123 1611

Fax.: +49 341 123 1615

www.leipzig.de

www.wccleipzig2020.com

